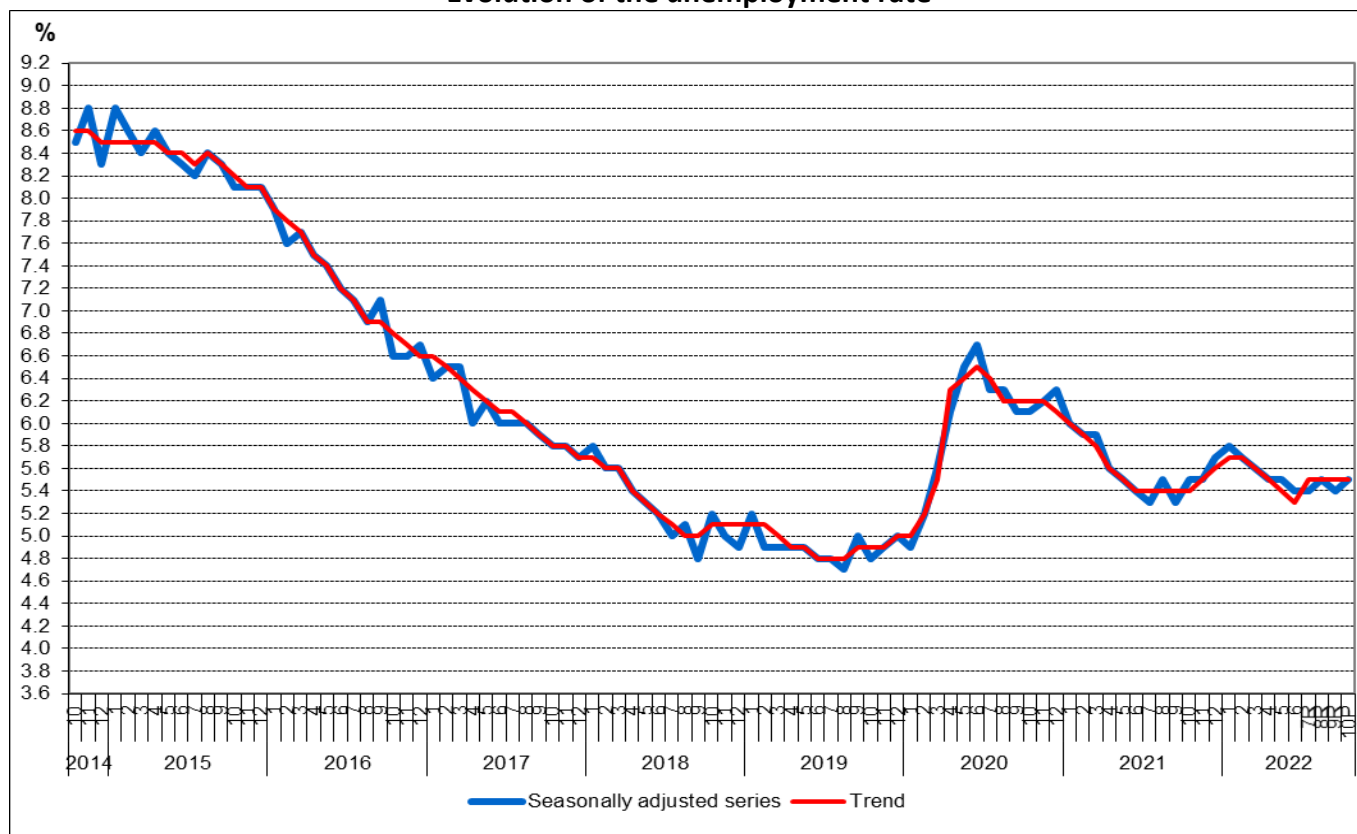


Area: ILO* unemployment

In October 2022, the seasonally adjusted unemployment rate was estimated at 5.5%

- Unemployment rate** in October 2022 increased with 0.1 percentage points as compared to September 2022 (5.4%).
- Men's unemployment rate was higher than that of women with 1.4 percentage points.

Evolution of the unemployment rate



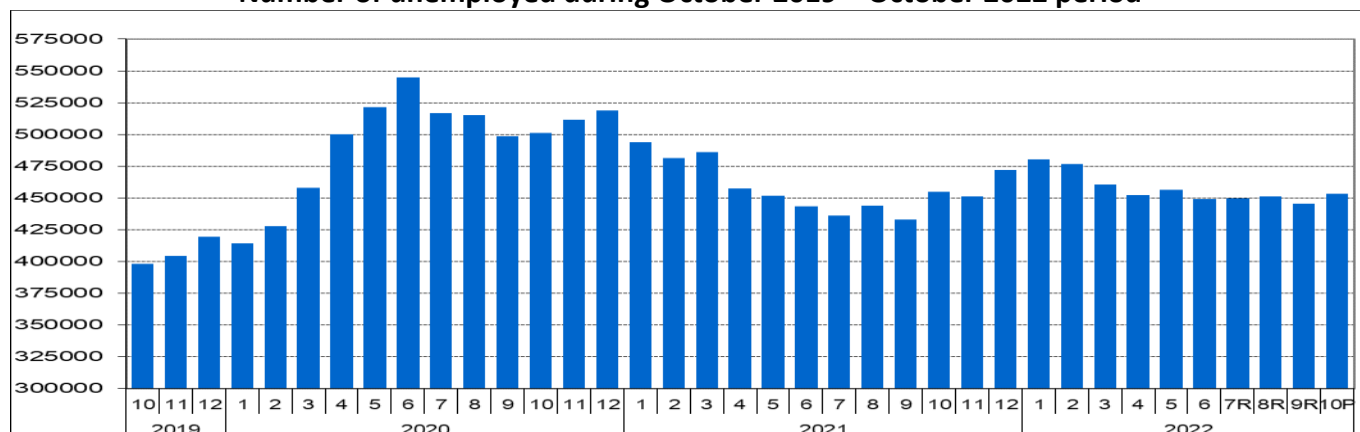
^R Revised data, ^P Provisional data - according to data revising policy (see point 6 in [Methodological explanations](#)).

[Chart data \(xls\)](#)

The number of unemployed (aged 15-74 years) estimated for October 2022 was of 453.2 thousand persons, increasing as compared to the previous month (445.6 thousand persons), but slightly decreasing as compared to October 2021 (454.9 thousand persons).

* according to the standards of International Labour Office, the data being obtained by the Household Labour Force Survey - (see points 1 and 3 in Methodological explanations).

Number of unemployed during October 2019 – October 2022 period



^R Revised data, ^P Provisional data - according to data revising policy (see point 6 in [Methodological explanations](#)).

[Chart data \(xls\)](#)

According to the breakdown by gender, men's unemployment rate was with 1.4 percentage points higher than that of women (the values concerned are 6.1% for men and 4.7% for women).

The high level of the unemployment rate among young people (15-24 years old) of 22.9% still holds attention.

Unemployment rate by gender (%)

	2021			2022									
	Oct.	Nov.	Dec.	Jan.	Feb.	Mar.	Apr.	May	Jun.	Jul.	Aug.	Sept.	Oct. ^P
Total													
15-74 years	5.5	5.5	5.7	5.8	5.7	5.6	5.5	5.5	5.4	5.4 ^R	5.5 ^R	5.4 ^R	5.5
15-24 years	22.0	22.0	22.0	22.7	22.7	22.7	22.8	22.8	22.8	22.9	22.9	22.9	..
25-74 years	4.3	4.3	4.6	4.7	4.6	4.4	4.3	4.4	4.3	4.3 ^R	4.3 ^R	4.3 ^R	4.3
Masculin													
15-74 years	5.9	5.9	6.1	5.9	6.0	5.8	5.9	6.0	6.0	6.0 ^R	6.0 ^R	6.0 ^R	6.1
15-24 years	21.5	21.5	21.5	22.3	22.3	22.3	21.3	21.3	21.3	20.8	20.8	20.8	..
25-74 years	4.6	4.7	5.1	4.7	4.9	4.6	4.7	4.9	4.9	4.9 ^R	4.9 ^R	4.8 ^R	4.9
Feminin													
15-74 years	5.0	4.8	5.1	5.6	5.3	5.3	4.9	4.8	4.7	4.7 ^R	4.8 ^R	4.7 ^R	4.7
15-24 years	22.8	22.8	22.8	23.4	23.4	23.4	25.5	25.5	25.5	26.5	26.5	26.5	..
25-74 years	3.9	3.7	4.0	4.6	4.3	4.2	3.8	3.8	3.5	3.4 ^R	3.6 ^R	3.4 ^R	3.4

^R Revised data, ^P Provisional data - according to data revising policy (see point 6 in [Methodological explanations](#)).

.. - Unavailable data.

[Table data \(xls\)](#)

The unemployment rate of adult persons (aged 25-74 years) was estimated at 4.3% for October 2022 (3.4% in the case of women and 4.9% in that of men's).

The number of unemployed aged 25-74 years accounted for 72.8% of the total number of unemployed estimated for October 2022.

Additional information:

**** The unemployment rate** is the weight of the unemployed in the active population.

For an accurate interpretation of the indicators, please see the [Methodological explanations](#).

Monthly data on the number of unemployed and the unemployment rate compiled according to international definition (ILO - International Labour Office) can also be obtained from the publication "Monthly Statistical Bulletin No. 10/2022". Data in the TEMPO database will be available starting with the 5th of December 2022.

The next press release which will include the estimates for November 2022 will be issued on the 9th of January 2023.

Press release archive: <https://insse.ro/cms/en/comunicate-de-presa-view>.

Communication Department

e-mail: birou presa@insse.ro

Tel: +4021 3181869