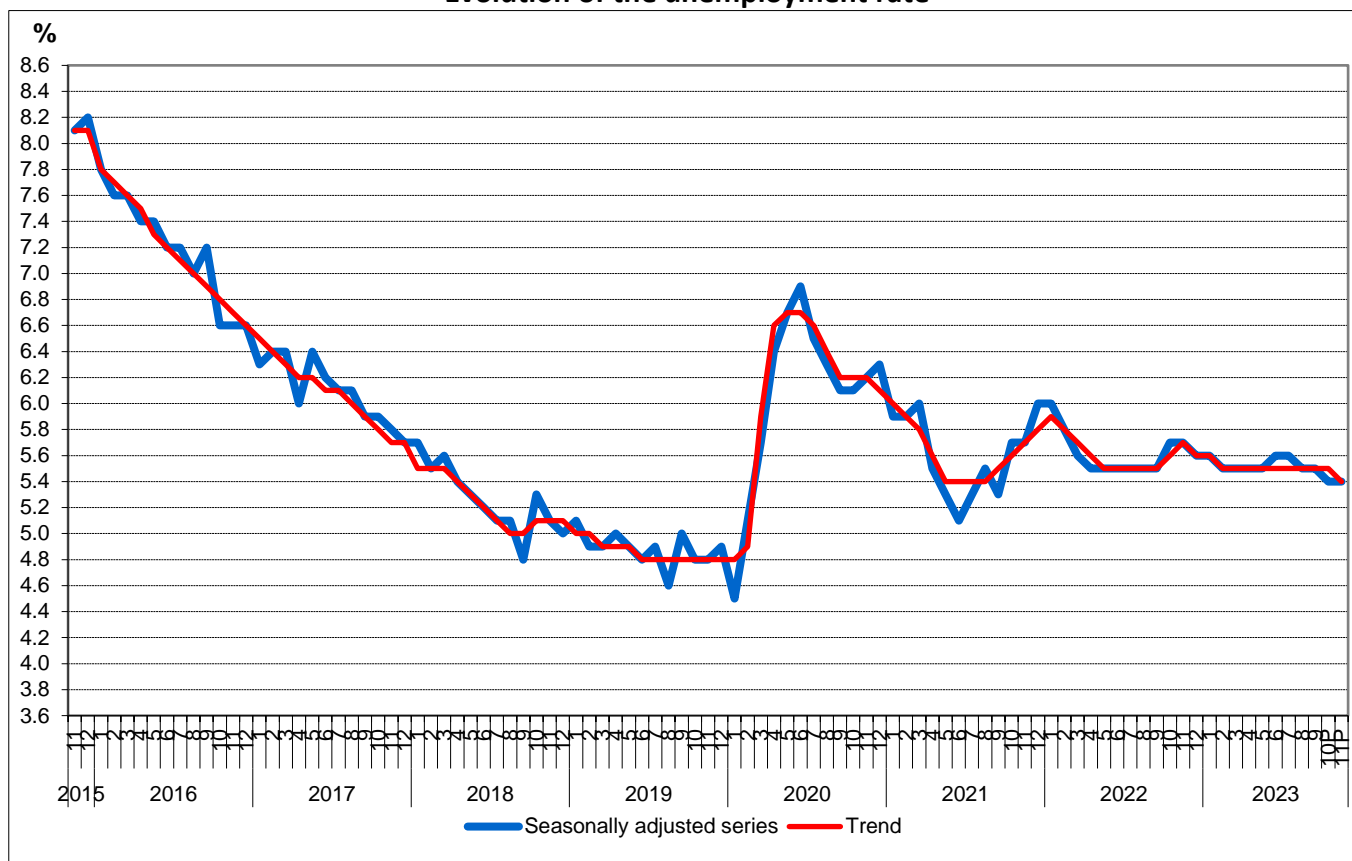


Area: ILO\* unemployment

## In November 2023, the seasonally adjusted unemployment rate was estimated at 5.4%

- In November 2023, the seasonally adjusted unemployment rate\*\* was estimated at 5.4%, the same value as in October 2023.
- Men's unemployment rate was higher than that of women with 0.9 percentage points.

Evolution of the unemployment rate



<sup>p</sup> Provisional data - according to data revising policy (see point 6 in [Methodological explanations](#)).

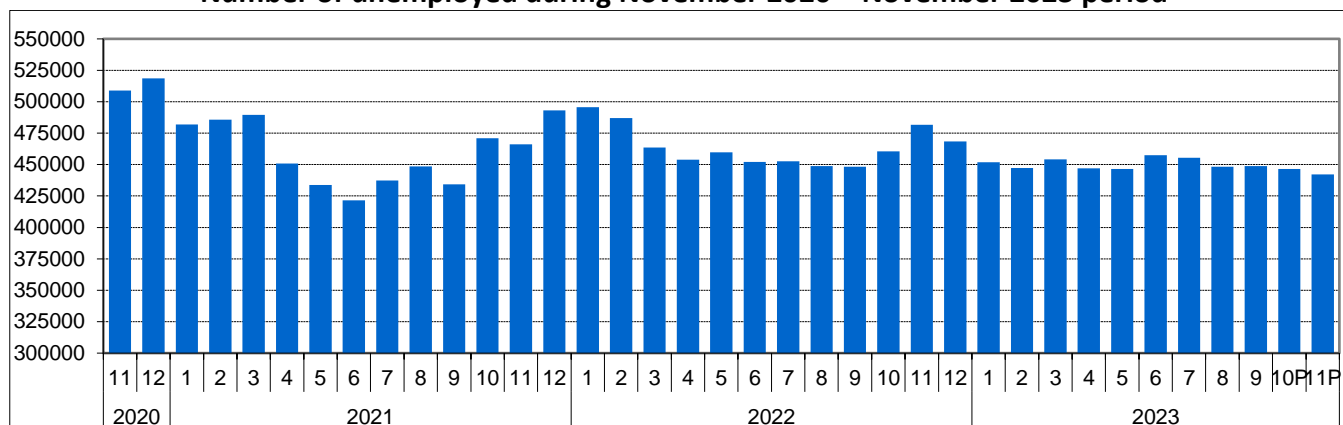
[Chart data \(xls\)](#)

The number of unemployed (aged 15-74 years) estimated for November 2023 was of 442.1 thousand persons:

- decreasing as compared to the previous month (446.5 thousand persons);
- decreasing as compared to the same period of the previous year (481.7 thousand persons).

\* according to the standards of International Labour Office, the data being obtained by the Household Labour Force Survey - (see points 1 and 3 in Methodological explanations).

## Number of unemployed during November 2020 – November 2023 period



<sup>P</sup> Provisional data - according to data revising policy (see point 6 in [Methodological explanations](#)).

[Chart data \(xls\)](#)

According to the breakdown by gender, men's unemployment rate was with 0.9 percentage points higher than that of women (the values concerned are 5.8% for men and 4.9% for women).

The high level of the unemployment rate among young people (15-24 years old) of 21.1% still holds attention.

### Unemployment rate by gender (%)

	2022		2023										
	Nov.	Dec.	Jan.	Feb.	Mar.	Apr.	May	Jun.	Jul.	Aug.	Sept.	Oct. <sup>P</sup>	Nov. <sup>P</sup>
<b>Total</b>													
15-74 years	5.7	5.6	5.6	5.5	5.5	5.5	5.5	5.6	5.6	5.5	5.5	5.4	5.4
15-24 years	22.2	22.2	21.7	21.7	21.7	22.3	22.3	22.3	21.1	21.1	21.1	..	..
25-74 years	4.7	4.5	4.5	4.5	4.5	4.5	4.5	4.5	4.6	4.5	4.5	4.5	4.4
<b>Male</b>													
15-74 years	6.1	5.9	5.9	5.7	5.9	5.8	5.9	5.9	5.8	5.8	5.8	5.7	5.8
15-24 years	21.6	21.6	20.4	20.4	20.4	21.2	21.2	21.2	22.5	22.5	22.5	..	..
25-74 years	4.9	4.7	4.8	4.7	4.9	4.9	4.9	4.8	4.7	4.5	4.6	4.6	4.7
<b>Female</b>													
15-74 years	5.3	5.3	5.2	5.2	5.0	5.1	5.0	5.2	5.4	5.1	5.1	5.1	4.9
15-24 years	23.1	23.1	24.2	24.2	24.2	24.1	24.1	24.1	18.5	18.5	18.5	..	..
25-74 years	4.3	4.2	4.2	4.2	4.0	4.0	4.1	4.1	4.5	4.5	4.5	4.4	4.1

<sup>P</sup> Provisional data - according to data revising policy (see point 6 in [Methodological explanations](#)).

.. - Unavailable data.

[Table data \(xls\)](#)

The unemployment rate of adult persons (aged 25-74 years) was estimated at 4.4% for November 2023 (4.1% in the case of women and 4.7% in that of men's).

The number of unemployed aged 25-74 years accounted for 77.2% of the total number of unemployed estimated for November 2023.

### Additional information:

\*\* The **unemployment rate** is the weight of the unemployed in the active population.

For an accurate interpretation of the indicators, please see the [Methodological explanations](#).

Monthly data on the number of unemployed and the unemployment rate compiled according to international definition (ILO - International Labour Office) can also be obtained from the publication "Monthly Statistical Bulletin No. 11/2023". Data in the TEMPO database will be available starting with the 9<sup>th</sup> of January 2023.

The next press release which will include the estimates for December 2023 will be issued on the 1<sup>st</sup> of February 2024.

Press release archive: <http://www.insse.ro/cms/en/comunicate-de-pres-a-view>.

**Communication Department**

e-mail: [birou presa@insse.ro](mailto:birou presa@insse.ro)

Tel: +4021 3181869