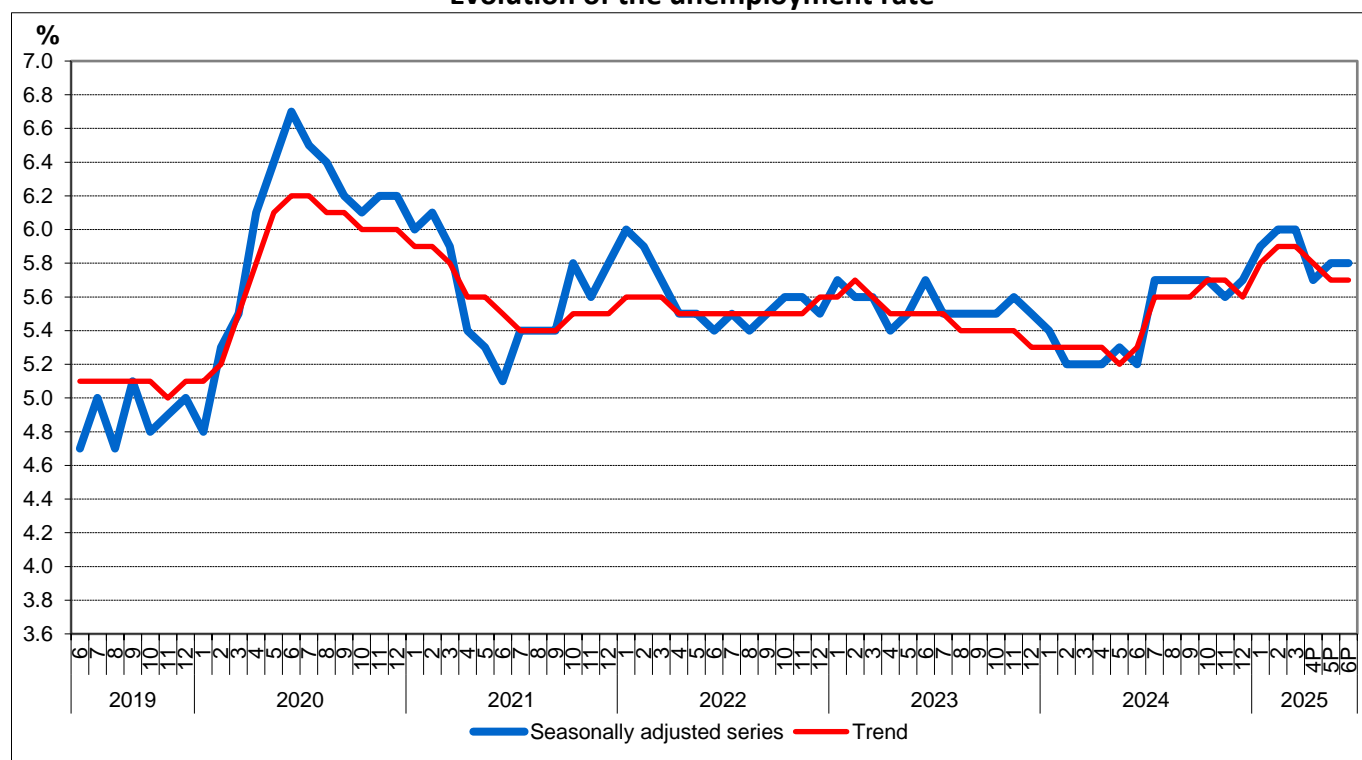


Area: ILO* unemployment

In June 2025, the seasonally adjusted unemployment rate was estimated at 5.8%

- In June 2025, the seasonally adjusted unemployment rate** was estimated at 5.8%, the same value as in May 2025.
- Men's unemployment rate was higher than that of women with 0.3 percentage points.

Evolution of the unemployment rate



^P Provisional data - according to data revising policy (see point 6 in [Methodological explanations](#)).

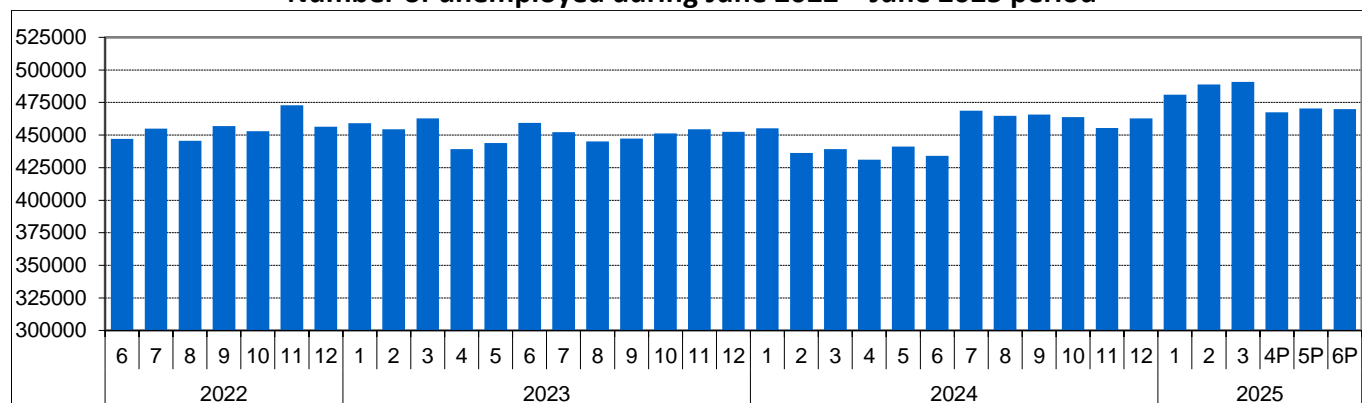
[Chart data \(xls\)](#)

The number of unemployed (aged 15-74 years) estimated for June 2025 was of 469.8 thousand persons:

- decreasing as compared to the previous month (470.5 thousand persons);
- increasing as compared to the same period of the previous year (434.1 thousand persons).

* according to the standards of International Labour Office, the data being obtained by the Household Labour Force Survey - (see points 1 and 3 in [Methodological explanations](#)).

Number of unemployed during June 2022 – June 2025 period



^P Provisional data - according to data revising policy (see point 6 in [Methodological explanations](#)).

[Chart data \(xls\)](#)

According to the breakdown by sex, men's unemployment rate was with 0.3 percentage points higher than that of women (the values concerned are 5.9% for men and 5.6% for women).

The high level of the unemployment rate among young people (15-24 years old) of 24.8%, registered between January and March 2025 still holds attention.

Unemployment rate by sex (%)

	2024							2025					
	Jun.	Jul.	Aug.	Sept.	Oct.	Nov.	Dec.	Jan.	Feb.	Mar.	Apr. ^P	May ^P	Jun. ^P
Total													
15-74 years	5.2	5.7	5.7	5.7	5.7	5.6	5.7	5.9	6.0	6.0	5.7	5.8	5.8
15-24 years	22.9	26.7	26.7	26.7	26.3	26.3	26.3	24.8	24.8	24.8
25-74 years	4.1	4.3	4.2	4.2	4.3	4.2	4.3	4.7	4.8	4.9	4.5	4.6	4.6
Male													
15-74 years	5.5	6.2	6.2	6.2	5.9	5.7	5.9	5.9	5.9	5.9	6.0	5.9	5.9
15-24 years	21.7	27.1	27.1	27.1	26.3	26.3	26.3	22.2	22.2	22.2
25-74 years	4.5	4.6	4.6	4.6	4.4	4.2	4.4	4.8	4.8	4.8	4.7	4.7	4.8
Female													
15-74 years	4.7	5.1	5.0	5.1	5.4	5.4	5.3	5.9	6.1	6.2	5.5	5.6	5.6
15-24 years	24.9	26.0	26.0	26.0	26.3	26.3	26.3	28.7	28.7	28.7
25-74 years	3.6	3.8	3.7	3.6	4.1	4.0	4.1	4.6	4.7	4.9	4.2	4.3	4.3

^P Provisional data - according to data revising policy (see point 6 in [Methodological explanations](#)).

.. - Unavailable data.

[Table data \(xls\)](#)

The unemployment rate of adult persons (aged 25-74 years) was estimated at 4.6% for June 2025 (4.8% in that of men's and 4.3% in the case of women).

The number of unemployed aged 25-74 years accounted for 74.1% of the total number of unemployed estimated for June 2025.

Additional information:

**** The unemployment rate** is the share of the unemployed in the active population.

For an accurate interpretation of the indicators, please see the [Methodological explanations](#).

Monthly data on the number of unemployed and the unemployment rate compiled according to international definition (ILO - International Labour Office) can also be obtained from the publication "Monthly Statistical Bulletin No. 6/2025". Data will be available in the TEMPO database starting with the 31st of July 2025.

The next press release which will include the estimates for July 2025 will be issued on the 1st of September 2025.

Press release archive: <https://insse.ro/cms/en/comunicate-de-pres-a-view>.

Directorate of European Affairs, International Cooperation and Communication

e-mail: biroupresa@insse.ro

Tel: +4021 3181869