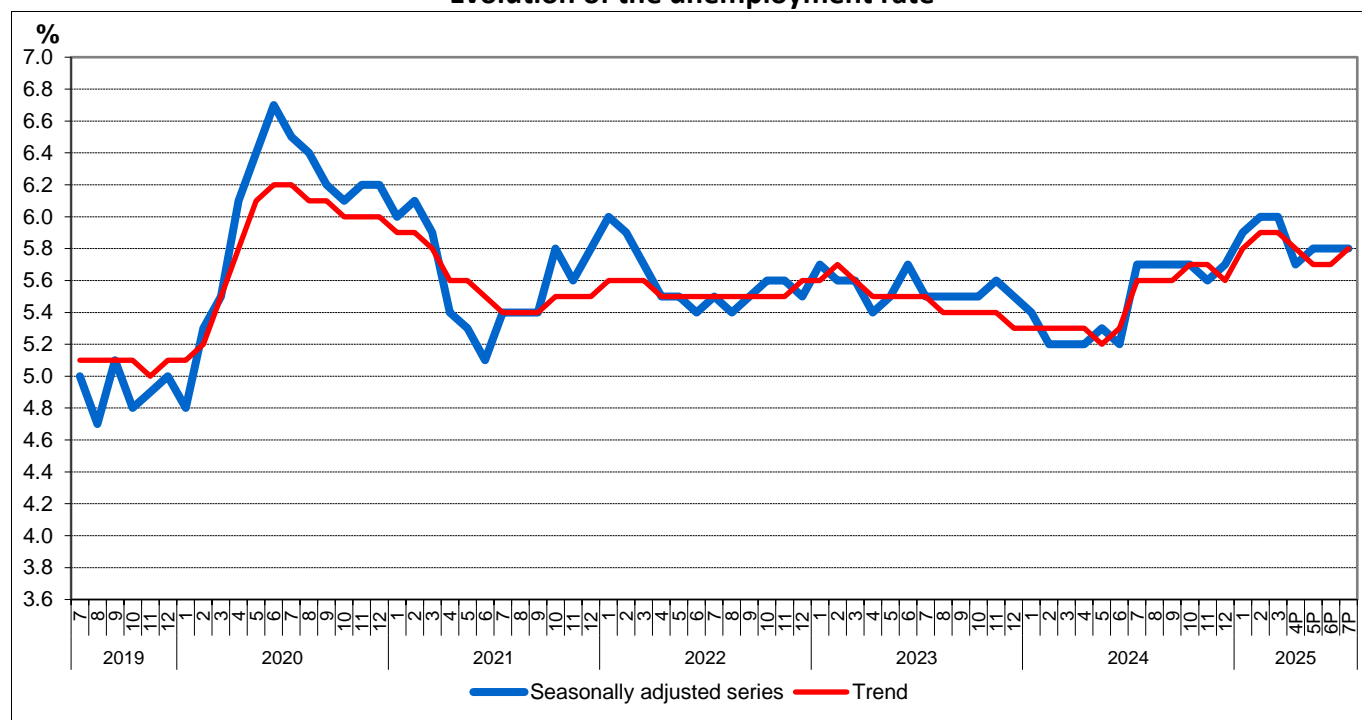


Area: ILO* unemployment

In July 2025, the seasonally adjusted unemployment rate was estimated at 5.8%

- In July 2025, the seasonally adjusted unemployment rate** was estimated at 5.8%, decreasing by 0.2 percentage points as compared to June 2025.
- Men's unemployment rate was higher than that of women with 0.5 percentage points.

Evolution of the unemployment rate



^R Revised data, ^P Provisional data - according to data revising policy (see point 6 in [Methodological explanations](#)).

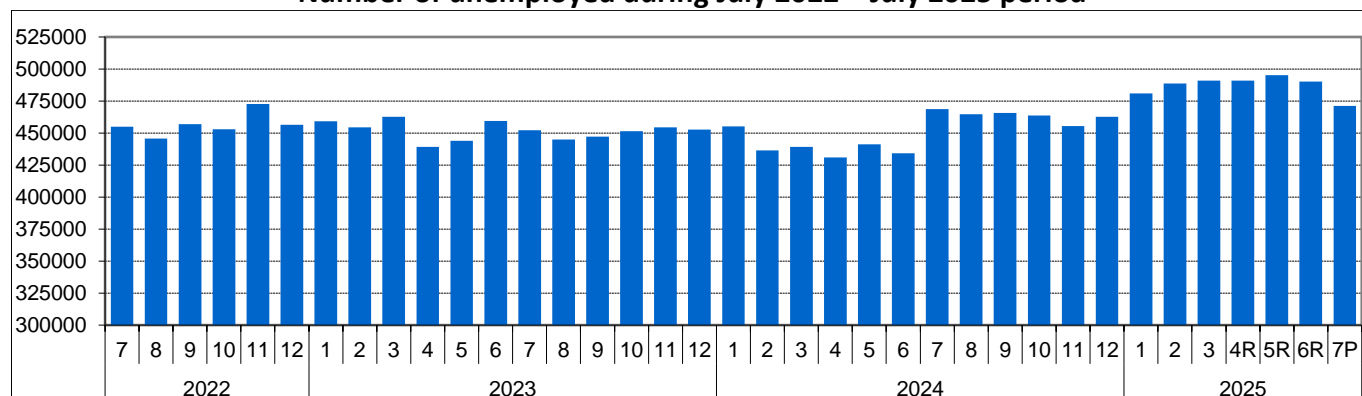
[Chart data \(xls\)](#)

The number of unemployed (aged 15-74 years) estimated for July 2025 was of 471.2 thousand persons:

- decreasing as compared to the previous month (490.1 thousand unemployed persons in June);
- increasing as compared to the same period of the previous year (468.8 thousand unemployed persons in July 2024).

* according to the standards of International Labour Office, the data being obtained by the Household Labour Force Survey - (see points 1 and 3 in Methodological explanations).

Number of unemployed during July 2022 – July 2025 period



^R Revised data, ^P Provisional data - according to data revising policy (see point 6 in [Methodological explanations](#)).

[Chart data \(xls\)](#)

According to the breakdown by sex, men's unemployment rate was with 0.5 percentage points higher than that of women (the values concerned are 6.0% for men and 5.5% for women).

The high level of the unemployment rate among young people (15-24 years old) of 23.5%, registered between April and June 2025 still holds attention.

Unemployment rate by sex (%)

	2024						2025						
	Jul.	Aug.	Sept.	Oct.	Nov.	Dec.	Jan.	Feb.	Mar.	Apr.	May	Jun.	Jul. ^P
Total													
15-74 years	5.7	5.7	5.7	5.7	5.6	5.7	5.9	6.0	6.0	6.0 ^R	6.1 ^R	6.0 ^R	5.8
15-24 years	26.7	26.7	26.7	26.3	26.3	26.3	24.8	24.8	24.8	23.5	23.5	23.5	..
25-74 years	4.3	4.2	4.2	4.3	4.2	4.3	4.7	4.8	4.9	4.8 ^R	4.9 ^R	4.9 ^R	4.7
Male													
15-74 years	6.2	6.2	6.2	5.9	5.7	5.9	5.9	5.9	5.9	6.0 ^R	6.0 ^R	6.0 ^R	6.0
15-24 years	27.1	27.1	27.1	26.3	26.3	26.3	22.2	22.2	22.2	22.4	22.4	22.4	..
25-74 years	4.6	4.6	4.6	4.4	4.2	4.4	4.8	4.8	4.8	4.8 ^R	4.9 ^R	4.9 ^R	4.7
Female													
15-74 years	5.1	5.0	5.1	5.4	5.4	5.3	5.9	6.1	6.2	6.0 ^R	6.2 ^R	6.0 ^R	5.5
15-24 years	26.0	26.0	26.0	26.3	26.3	26.3	28.7	28.7	28.7	25.0	25.0	25.0	..
25-74 years	3.8	3.7	3.6	4.1	4.0	4.1	4.6	4.7	4.9	4.8 ^R	4.9 ^R	4.9 ^R	4.5

^R Revised data, ^P Provisional data - according to data revising policy (see point 6 in [Methodological explanations](#)).

.. - Unavailable data.

[Table data \(xls\)](#)

The unemployment rate of adult persons (aged 25-74 years) was estimated at 4.7% for July 2025 (4.7% in that of men's and 4.5% in the case of women).

The number of unemployed aged 25-74 years accounted for 76.1% of the total number of unemployed estimated for July 2025.

Additional information:

** The **unemployment rate** is the share of the unemployed in the active population.

For an accurate interpretation of the indicators, please see the [Methodological explanations](#).

Monthly data on the number of unemployed and the unemployment rate compiled according to international definition (ILO - International Labour Office) can also be obtained from the publication "Monthly Statistical Bulletin No. 7/2025". Data will be available in the TEMPO database starting with the 1st of September 2025.

The next press release which will include the estimates for August 2025 will be issued on the 2nd of October 2025.

Press release archive: <http://www.insse.ro/cms/en/comunicate-de-pres-a-view>.

Directorate of European Affairs, International Cooperation and Communication

e-mail: biroupresa@insse.ro

Tel: +4021 3181869