

Domain: Education

THE ENROLLED POPULATION WAS 3,485.6 THOUSAND PEOPLE IN THE 2024-2025 SCHOOL/ACADEMIC YEAR

- **Enrolled population** within the national education system was 3,485.6 thou pupils and students¹ in the school/academic year 2024-2025, showing a 19.1 thou increase as against the previous school/academic year.
- The enrolment has registered the most significant increases in **upper secondary education - vocational** (+3.9%) and **tertiary education** (+4.4%) compared to the previous year.
- The **graduates** of the 2023-2024 school/academic year numbered 502.4 thousand pupils and students, a decrease of 0.5% in comparison with the previous school/academic year.

Individuals enrolled in the 2024-2025 school year/academic year

Almost half of the enrolled population was enrolled in primary and lower secondary education (45.6%) in the 2024-2025 school/academic year, and about a third was enrolled in upper secondary - high school education (17.3%) and early childhood education (15.8%).

Post-secondary non-tertiary education was the least representative level of education in the total enrolled population (2.3%).

Of the total population enrolled in the national education system, about half (50.1%) were female students, and almost three-quarters (73.3%) studied in urban areas.

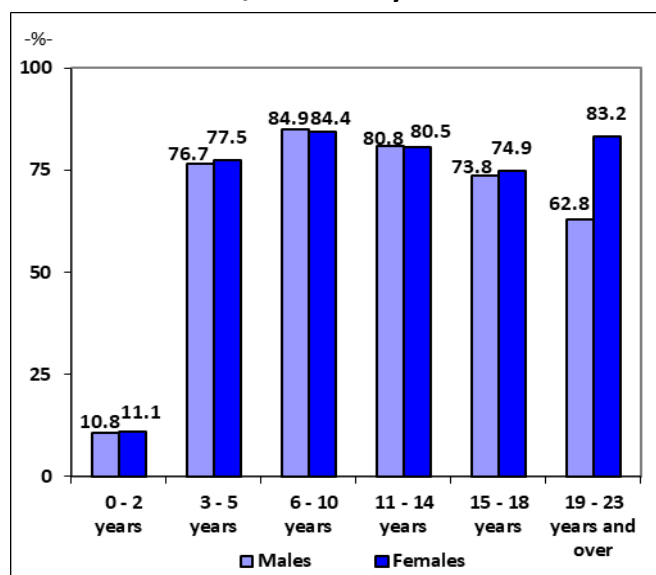
Upper secondary - vocational education and tertiary education registered the most important increases in enrollment (+3.6 thousand pupils and +24.0 thousand students, respectively), compared to the previous school year.

Primary and lower secondary education (-8.2 thou pupils), as well as post-secondary non-tertiary education (-1.1 thou pupils) showed the most significant decline in the number of school population in the 2024-2025 school year, as compared to the previous one.

Public school units/institutions accounted for most of the enrolled population (94.3%).

By level of education, the largest share of pupils and students enrolled in private educational institutions was recorded in post-secondary non-tertiary education (41.3%).

School-aged population enrolment rate in the 2024-2025 school/academic year^{*)}



^{*)} Resident population as of January 1st, 2024 (provisional data) was used.

[Graph data \(.xls\)](#)

The enrollment rate of students in the 6-10 age group was the highest (84.7%) compared to the other age groups.

In the 2024-2025 academic year, 568.6 thousand students were enrolled in tertiary education, of which 55.4% were female.

¹ Pupils and students – participants in all education levels are included.

The most attractive fields of tertiary education (according to the ISCED-F classification) were **business, administration and law** (23.9% of the total) and **engineering, manufacturing and construction** (19.9% of the total).

The **network of educational establishments/institutions** operating in the school/academic year 2024-2025 mainly concerned the primary and lower secondary level (55.5%), upper secondary - high school level (20.5%), and early childhood education levels (19.3%).

At the **territorial level**, the enrolled population in the 2024-2025 school/academic year registered the highest values in the Northeast region (585.5

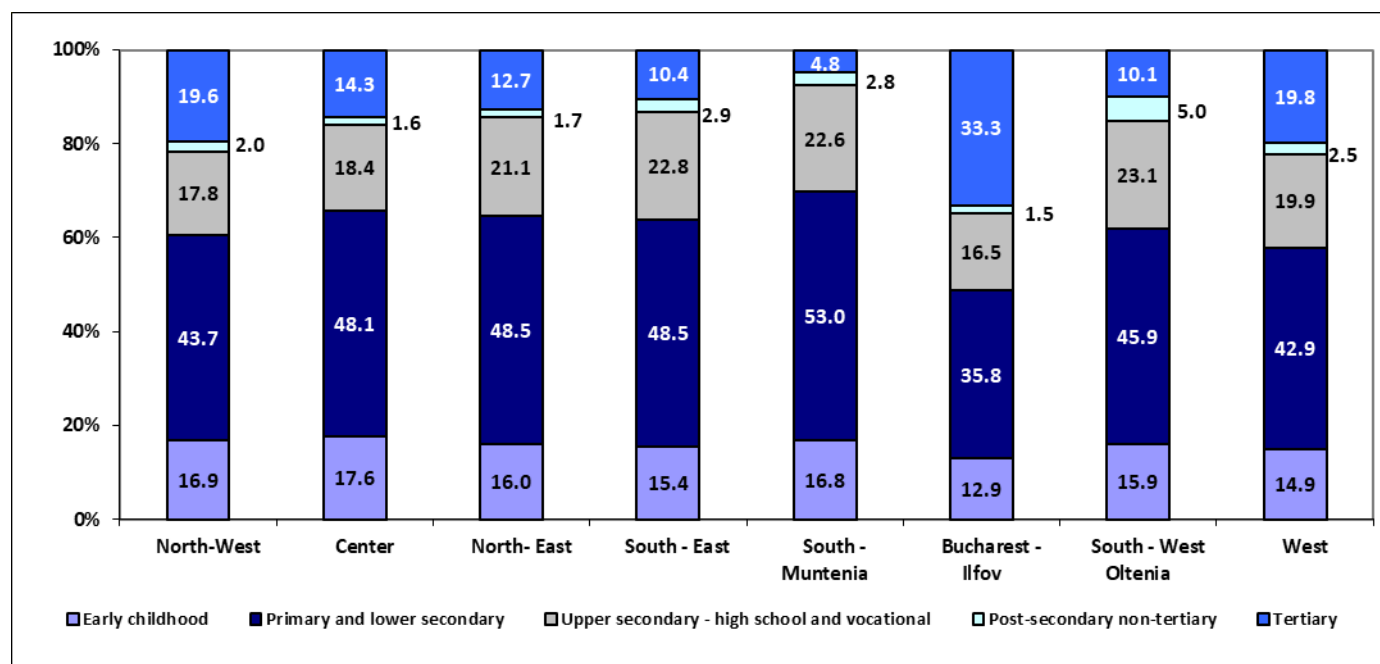
thousand persons) and in the Bucharest-Ilfov region (543.5 thousand persons).

The distribution of the enrolled population by development regions and education level in each region's total shows that primary and lower secondary education in South-Muntenia recorded the highest share (53.0%).

By contrast, post-secondary non-tertiary education held the lowest shares in the Center and Bucharest-Ilfov regions (accounting for 1.6% and 1.5 respectively).

The share of tertiary education students in the total of each region registered the highest values in Bucharest-Ilfov (33.3%).

The distribution of the enrolled population by development regions and educational level in the 2024-2025 school/academic year



[Graph data \(.xls\)](#)

Teaching staff in the 2024-2025 school/academic year

The **teaching staff** of the national education system in the 2024-2025 school/academic year numbered 251.9 thousand people. Thus, **the average ratio of enrolled population to the number of teachers** was 14 children/pupils/students per teacher.

Female teachers were the majority in pre-university education (83.0%) and in each of the following education levels: early childhood education (99.7%), primary and lower secondary (82.2%), post-secondary non-tertiary (74.6%),

upper secondary – high school (72.7%), vocational (67.1%).

Graduates of the 2023-2024 school/academic year

The 2023-2024 school/academic year's graduates of lower secondary, upper secondary – high school and vocational, post-secondary non-tertiary education, and tertiary education levels (BA, MA, PhD, and advanced research postdoctoral studies) counted for 502.4 thousand persons.

The majority of graduates were female (265.5 thousand), standing for 52.9% of the total graduates. Of the total graduates, 83.8% completed an

educational level in urban² areas, while the rest were registered in rural areas.

At the end of the 2023-2024 school year, 174.9 thousand students graduated from **lower secondary education**, most of them from school establishments in the Northeast region (18.6%). The proportion of boys (51.3%) exceeded that of girls by 2.6 percentage points. In urban areas, graduates represented 60.4% of all lower secondary graduates. At the territorial level, higher proportions of graduates in rural education establishments were recorded in the Northeast and South-Muntenia regions (each accounting for 52.6%).

At the end of the 2023-2024 school year, 149.9 thousand students graduated from **upper secondary education – high school**, 4.5% more than in the previous school year. Most of the upper secondary-high school graduates (87.3%) attended full-time education – daytime classes.

The data on **upper secondary education - high school graduates** show that about half of the students attended the theoretical pathway (52.2% of all graduates), 38.2% attended technological pathway classes, and 9.6% studied in vocational pathway high schools.

The graduates who took the Baccalaureate exams amounted to 136.6 thou, of which 123.3 thousand were graduates of the class of 2024 (90.3%). A total of 108.5 thousand people (79.4%) passed the national baccalaureate exams, of which 103.6 thousand (84.1%) were graduates of the class of 2024.

Upper secondary education - vocational was completed by 20.3 thousand pupils, 97.3% of whom were enrolled in public educational establishments.

Post-secondary non-tertiary education was completed by 30.2 thou pupils, of which 58.6% were enrolled in public education establishments.

Tertiary education degree graduates numbered 127.1 thousand, of which 59.0% were female.

Most **tertiary degree graduates** studied business, administration, and law (25.6%),

engineering, manufacturing, and construction (17.1%), and health and social services (12.3%).

The dropout rate in the 2023/2024 school year was 0.9% in upper secondary education – high school and vocational, 1.0% in primary education, and 1.0% in lower education.

In 2022³, the **financial resources** necessary for carrying out the educational process and allocated for the functioning of the national educational system units were provided mostly (94.2%) from public funds (from the state budget and the local budgets); the rest came from other educational institutions sources, and also from household incomes.

In terms of type of expenditure by public and private institutions, the largest share of total education-related expenditure was accounted for by current expenditure (93.2%), and the remainder was accounted for by capital expenditure (6.8%).

Additional Information:

For proper interpretation of the indicators, please refer to the [Methodological Notes](#) attached to this Press Release, on the home page.

The enrolled population, the number of graduates, the teaching personnel, and the material resources are shown in the [Annex](#).

Further information can be found

- by accessing TEMPO, the on-line database, at: <http://statistici.insse.ro:8077/tempo-online/#/pages/tables/insse-table>, available for users' access as of September 8th 2025;
- in the "The Educational System in Romania – summary data, for the 2023-2024 school/ academic year" statistical publication available in Romanian as of June 30th, 2025.

The next press release on education statistics is to be published in June 2026.

Press release archives:

<https://insse.ro/cms/en/comunicate-de-presa-view>

Directorate of Dissemination of statistical data and communication

e-mail: biroupresa@insse.ro; Tel: +4021 3181869

² The residence area is determined by the geographic location of the schools and faculties, not by the residence or domicile of the pupils/students.

³ Provisional data