

Domain: Population

## Legally resident population\* of Romania on 1<sup>st</sup> of January, 2021 was 22089 thousands persons.

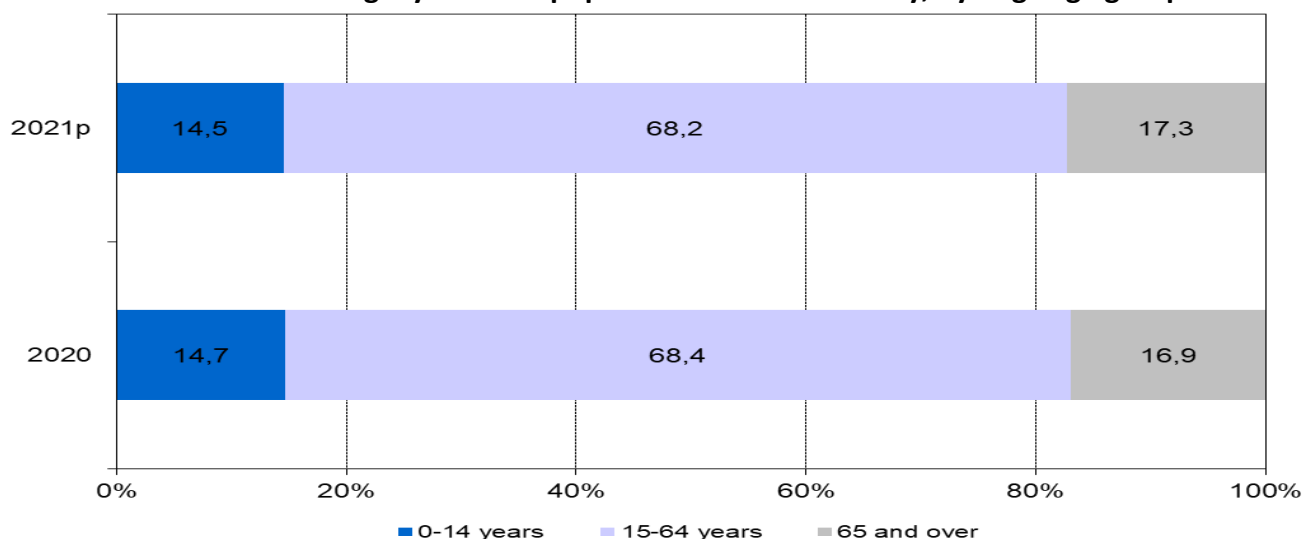
- On 1<sup>st</sup> of January, 2021<sup>1</sup>, the legally resident population was 22089 thousands persons, decreasing with 0.5% as against 1<sup>st</sup> of January, 2020.
- Urban and female population are in majority (56.3%, respectively 51.2%).
- The phenomenon of demographic ageing has increased, the elderly population of 65 years old and over exceeding the young population of 0-14 years with over 602 thousands persons (3815 thousands besides 3213 thousands persons).

On 1<sup>st</sup> of January, 2021 the legally resident urban population was 12442 thousands persons in slight decrease as against 1<sup>st</sup> of January, 2020 (with 0.6%).

The female population as of 1<sup>st</sup> of January, 2021 was 11305,5 thousands persons, decreasing with 0.4% compared with the same date last year.

The process of demographic aging has aggravated compared with 1<sup>st</sup> of January, 2020, with a slight decrease in the share of young people (0-14 years) and in the same time an increase (of 0.4 percentage points) in the share of the elderly (65 years and over).

**The structure of legally resident population on 1<sup>st</sup> of January, by large age groups**



[The data of the graph \(xls\)](#)

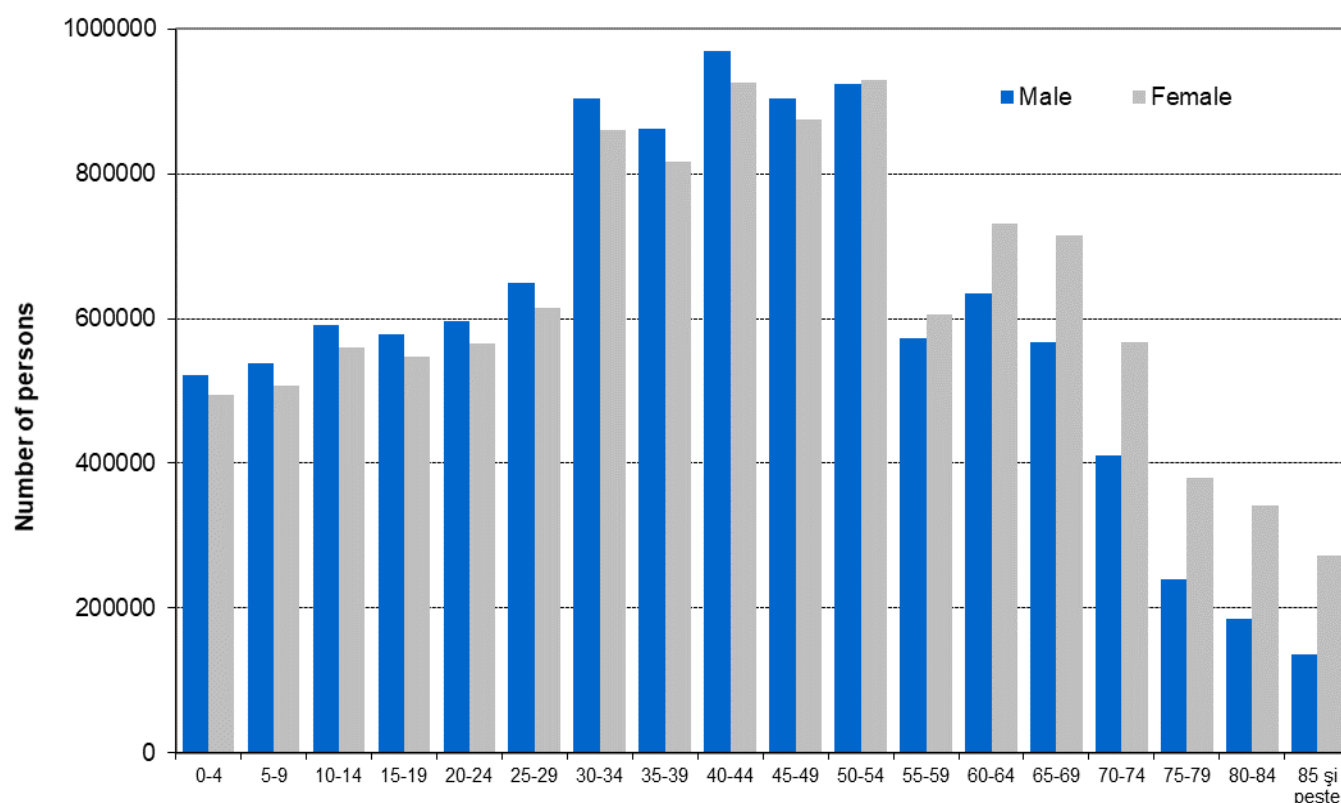
\* Legally resident population represents the number of persons with Romanian citizenship and domicile on the territory of Romania, determined according to administrative-territorial criteria. In other words, legally resident population represent de jure population and can include emigrants as well, regardless of the period of their emigration; legally resident population not to be confused with resident population! (see section 1.2 page 3 from [Methodological notes](#) attached to the press release on the homepage).

<sup>1</sup> Provisional data; will be revised in February 2022 (see section 4 from [Methodological notes](#) attached to the press release on the homepage).

The demographic ageing index has increased from 115.0 (on 1<sup>st</sup> of January, 2020) to 118.7 elderly persons per 100 young persons (on 1<sup>st</sup> of January, 2021).

The average age of the population was 41.9 years, with 0.2 years greater than the one as of 1<sup>st</sup> of January, 2020. The median age was 42.2 years, rising with 0.4 years as against 1<sup>st</sup> of January, 2020.

### Legally resident population by age groups and sex on 1<sup>st</sup> of January, 2021



[The data of the graph \(xls\)](#)

On 1<sup>st</sup> of January, 2021 the largest share of the total population belongs to the 40-44 age group (8.6%). With regard to the male population, the share of the age group was 9.0% and on female population was 8.2%.

The share of the 0-4 age group was 4.6%, smaller than the 5-9 age group (4.7%), 10-14 age group (5.2%) and 15-19 age group (5.1%).

Data on legally resident population on January 1<sup>st</sup>, 2021 will be available up to locality level (municipality, town and village), in TEMPO online database starting with 13, May 2021.

#### Additional information:

For an accurate interpretation of the indicators, please see [Methodological notes](#) attached to the press release on the homepage.

The next press release regarding legally resident population on July 1, 2021 will appear on October 2021, according to the calendar of press releases from 2021.

Archive of press releases: <http://www.insse.ro/cms/en/comunicate-de-presa-view>.

#### Communication Department

e-mail: [birou presa@insse.ro](mailto:birou presa@insse.ro)

Tel: +4021 3181869