

Domain: Vital statistics

## Vital statistics in February 2022, in the framework of the health crisis

- In February 2022, the number of recorded births remained at the same level as in February 2021 but decreased compared to January 2022.
- The number of deaths recorded in February 2022 rose compared to both February 2021 and the previous month (January 2022).
- In February 2022, the number of marriages increased compared to both February 2021 and January 2022, and the number of recorded divorces dropped compared to February 2021 but was up from January 2022.

### February 2022 compared to January 2022

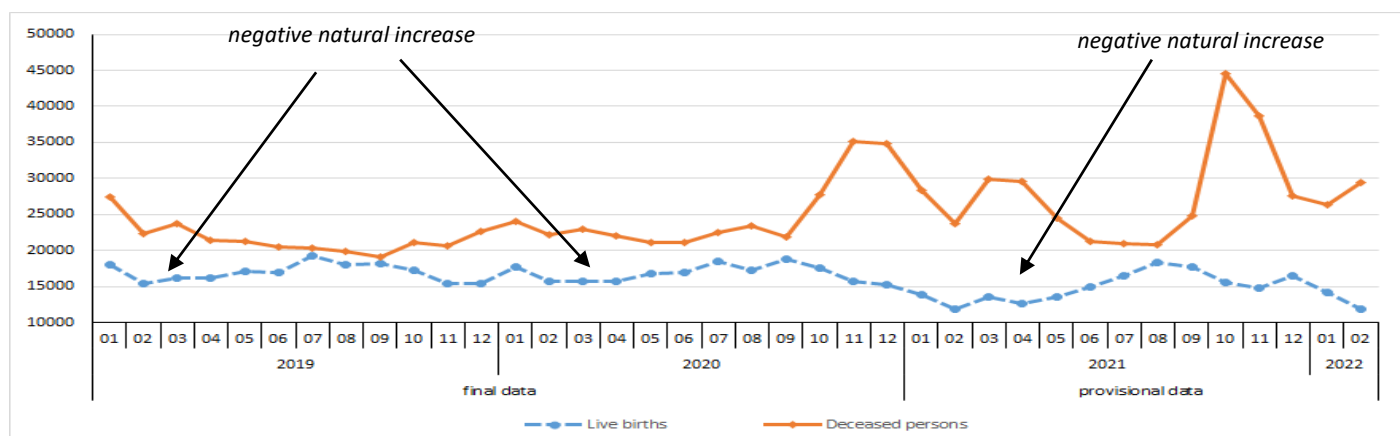
#### Birth rate, death rate and natural increase<sup>1</sup>

The **births** of 11817 children were recorded in February 2022, 2352 less than in January 2022.

The number of **deaths** recorded in February 2022 was 29505 (15603 men and 13902 women), 3190 deaths (1909 men and 1281 women) more than in January 2022. The number of **deaths of children under 1 year** recorded in February 2022 was 78, 25 deaths less than in January 2022.

As shown by the graph below, the number of deaths in 2020 increased significantly in October, November and December compared to the same months of 2019, and in January and February 2021 there was a downward trend in the number of deaths compared to the last months of 2020, with their number still being greater than the one recorded in the same months of the previous year. In the context of the COVID-19 pandemic, in October 2021, the highest increase in the number of deaths since the beginning of the pandemic was reported, after a 5-month period of decreases in the total number of deaths (April-August). In the last two months of 2021 and in the first month of 2022 a downward trend in the number of deaths (from one month to another) was recorded, and in February 2022 an increase in the number of deaths was reported.

**Fig. 1 Evolution of the number of live births and deceased persons from January 2019 to February 2022**

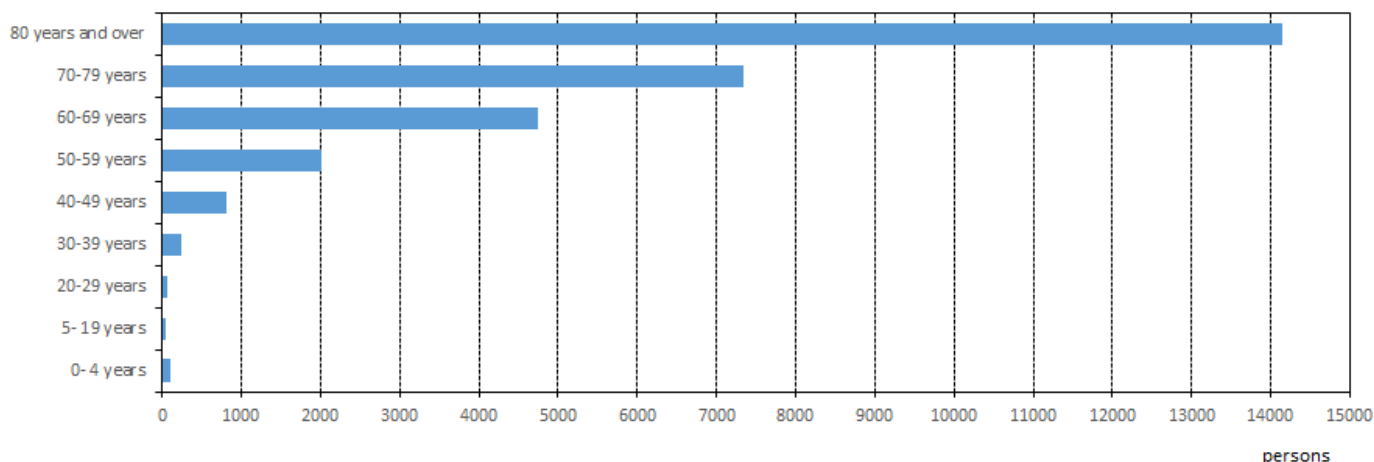


[The graph data in .xls format](#)

<sup>1</sup> The data for the months of 2021 and the months of 2022 are provisional.

In February 2022, more than 70% of the total number of deaths were recorded for the persons aged at least 70 (14142 deaths, accounting for 47.9% of the total, were recorded for the age group of 80 years and over; 7332 deaths, accounting for 24.9% of the total, were for persons aged 70-79) and 4755 deaths (16.1%) were for persons aged 60-69. Naturally, by contrast, the fewest deaths were recorded for the age groups of 5-19 years (49 deaths), 20-29 years (74 deaths) and 0-4 years (96 deaths).

**Fig. 2 Deaths recorded in February 2022, by age group**



[The graph data in .xls format](#)

If we consider the main causes of death, in February 2022 the greatest number of persons died of diseases of the circulatory system (16583 persons, accounting for 56.2% of the deaths recorded in February 2022), diseases of the respiratory system (5771 persons, accounting for 19.6%) and neoplasms (3393 persons, accounting for 11.5%).

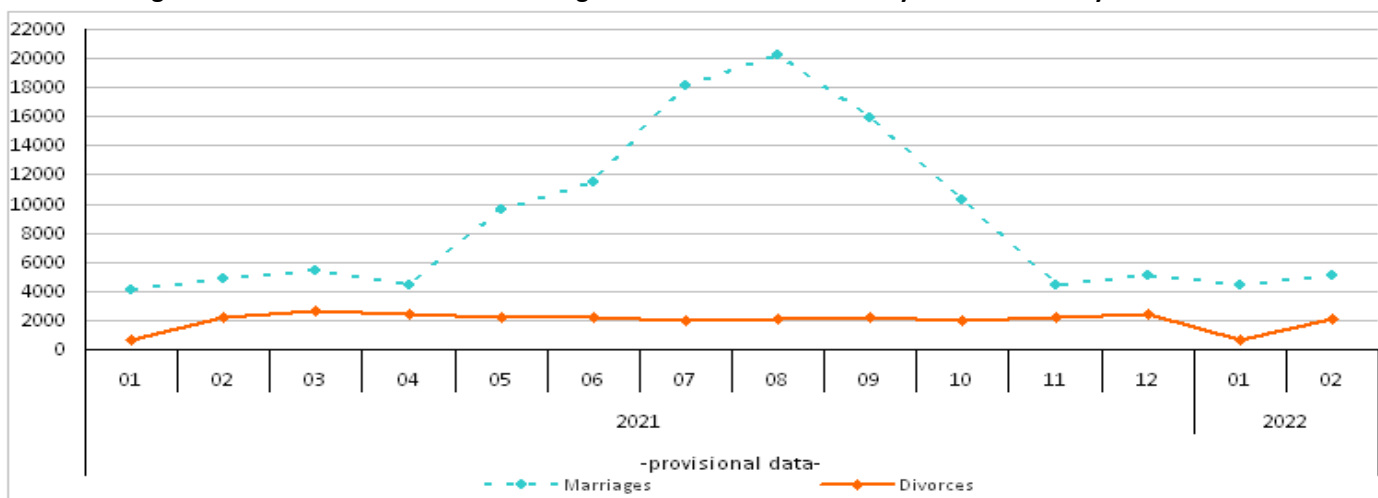
The **natural increase** remained negative in February 2022 (-17688); the number of deaths was 2.5 times higher than that of live births.

### Marriage rate and divorce rate<sup>1</sup>

5071 **marriages** were recorded at Register Offices in February 2022, 644 more than in January 2022.

2137 **divorces** were formally pronounced by final court decree and in accordance with Law No 202/2010 in February 2022, 1527 more than in January 2022.

**Fig. 3 Evolution of the number of marriages and divorces from January 2021 to February 2022**



[The graph data in .xls format](#)

## February 2022 compared to February 2021

### Birth rate, death rate and natural increase<sup>1</sup>

The number of **live births** recorded in February 2022 was greater by 1 compared to the same month of 2021.

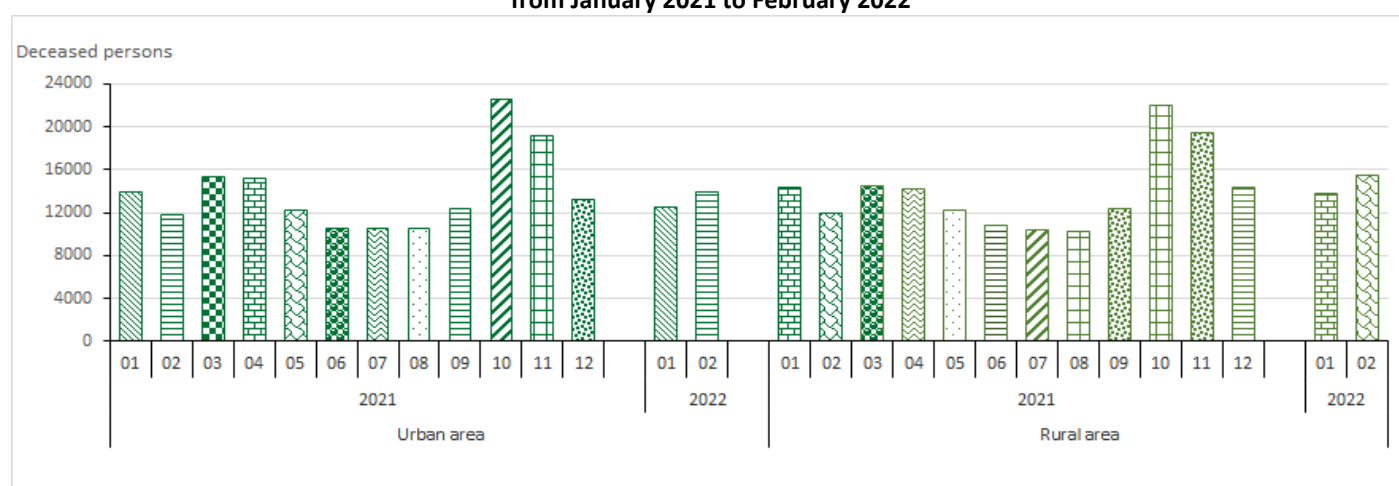
The **natural increase** was negative both in February 2022 (-17688 persons) and in February 2021 (-11904 persons).

The number of persons who **died** in February 2022 was greater by 5785 than in February 2021. Based on the three main causes of death, 3584 more deaths due to diseases of the circulatory system were recorded in February 2022 than in February 2021, the number of deaths due to diseases of the respiratory system was higher by 1919, and 1 more death due to neoplasm was reported.

The number of **children under 1 year who died** was smaller by 5 in February 2022 than the one recorded in February 2021.

In February 2022, the deaths of 14003 persons (7376 men and 6627 women) were recorded in the urban area and 15502 deaths (8227 men and 7275 women) were recorded in the rural area. Compared to the same month of 2021, the number of persons who died increased by 2198 persons (1185 men and 1013 women) in the urban area and by 3587 persons (1920 men and 1667 women) in the rural area.

**Fig. 4 Evolution of the number of deceased persons by area of residence from January 2021 to February 2022**



[The graph data in .xls format](#)

### Marriage rate and divorce rate<sup>2</sup>

The number of **marriages** increased by 212 in February 2022 compared to the number recorded in the same month of the previous year.

77 less **divorces** than in February 2021 were formally pronounced by final court decree and in accordance with Law No 202/2010 in February 2022.

The effects of the health crisis on the vital events are visible, particularly in the case of deaths, which since June 2020 have experienced an upward trend compared to the same months of the previous year, with July and August 2021 being the first months when the number of deaths decreased compared to the same months of the previous year, but in September-November 2021 there were significant increases compared to the same months of the previous year, with the highest rise in the number of deaths being reported in October 2021. There was a drop in the number of deaths in December 2021 compared to December 2020.

In January 2022, the number of deaths fell compared to both the same month of the previous year and December 2021. In February 2022, an increase in the number of deaths compared to both the same month of the previous year and January 2022 was reported.

<sup>2</sup> The data for the months of 2021 and the months of 2022 are provisional.

In 2020, only in the months of February, June, September, October and November there were rises in the number of live births compared to the same months of the previous year. In 2021, each month, the number of live births was lower than that of the same month of the year before, with the exception of August and December. In January-February 2022, the number of live births increased compared to the same months of 2021.

In the case of marriages, since March 2020 there have been drops in the number of these events compared to the same months of the previous year, for 12 months in a row, with March 2021 being the first month when the number of marriages increased compared to the same month of 2020, a situation that was maintained during the March-December 2021 period, with the exception of November 2021 compared to the same month of the previous year. In January-February 2022, the number of marriages rose compared to the same months of 2021.

*For a complete characterisation of the vital events recorded in March 2020-February 2022, in the framework of the COVID-19 pandemic, one needs to take into account that the provisions of the military ordinances introduced certain limitations as far as the organisation of events with more than 3 persons attending was concerned, limited the travels outside the dwelling and outside the locality, suspended the activities in closed spaces, made the Union of Notaries Public extend the deadlines for the pending divorce files until after the state of emergency ended. The provisions of the Government Decisions for the period covered by the state of alert imposed certain limitations with regard to the number of people than can get together in public places, as well as measures stating that only the organisation of events with a very small number of participants is allowed, a lockdown of certain localities was imposed and, once again, some activities that are carried out in closed spaces were suspended. The data need to be interpreted in correlation with the information from administrative sources, especially the information published by the Ministry of Health, through the National Institute of Public Health.*

#### Additional information:

**Natural increase** represents the difference between the number of live births and the number of deceased persons during the reference period.

The data for the months of 2021 and 2022 are provisional, with the events being presented according to the date when they were recorded and not according to the date when the vital events occurred; due to this reason, the data related to the two years will experience changes by including the belatedly recorded events (after the month of reference), by excluding the events recorded during the reference month but which occurred the previous month or before the previous month and by redistributing the events by month according to the date of occurrence.

For an accurate interpretation of the indicators, please see the [Methodological explanations attached to the press release on the homepage](#). The next press release on vital statistics will be issued on 10 May 2022.

Press release archive: <http://www.insse.ro/cms/en/comunicate-de-presa-view>

#### Communication Directorate

E-mail: [birouipresa@insse.ro](mailto:birouipresa@insse.ro); telephone: +4021 3181869