



Domain: Quarterly Gross domestic product – provisional (1) estimates

## GROSS DOMESTIC PRODUCTS IN Q2 2020 WAS, IN REAL TERMS, BY 12.3%<sup>1</sup> LOWER, AS COMPARED TO Q1 2020

- As against the same quarter of 2019, the Gross Domestic Product recorded a decrease by 10.5% for both unadjusted series and the seasonally adjusted series in Q2 2020;
- In the first semester of 2020, as against the same period of the previous year, the Gross Domestic product decreased by 4.6% for the unadjusted series and by 3.9% for the seasonally adjusted series;
- The seasonally adjusted series of quarterly Gross Domestic Product did not changed as a result of the revision of the estimates for Q2 2020, as compared to the version published in the Press release no. 214 of August 14, 2020.
- The Gross domestic product flash estimates, as well as the provisional ones, are affected by the difficulties posed by the pandemic crisis and by the establishment of the State of emergency and alert. These difficulties are connected to the collection of basic data representing entries for national accounts and have materialized by an increase of the non-response rate. To complete the information alternative data sources had been used in order to diminish, as much as possible, the impact of these effects on the quality of the produced indicators. According to current practice, the data published today will be revised, according to the Press Release Calendar and the national accounts revision policy published on NIS web-site, when new data sources become available.

The evolution of the quarterly Gross Domestic Product for the period 2018 – 2020, unadjusted and seasonally adjusted series, is presented in the table bellow.

---

<sup>1</sup> Working days and seasonally adjusted series

Table 1: Quarterly Gross Domestic Product

		Q1	Q2	Q3	Q4	Year
- in % as against the corresponding period of the previous year -						
Unadjusted series	2018	104.4	104.5	104.5	104.4	104.4
	2019	105.0	104.4	103.0	104.3	104.1
	2020	102.4	89.5	-	-	-
Seasonally adjusted series	2018	105.0	104.7	104.3	104.2	-
	2019	105.1	104.3	103.3	103.9	-
	2020	102.7	89.5	-	-	-
- in % as against the previous quarter -						
Seasonally adjusted series	2018	100.6	101.3	101.5	100.6	-
	2019	101.5	100.6	100.5	101.2	-
	2020	100.3	87.7	-	-	-

[The data of the table in Excel format](#)

## Seasonally adjusted series

**The Gross Domestic Product – seasonally adjusted data** - estimated for Q2 2020 amounted to 238502.7 million lei current prices, decreasing – in real terms – by 12.3% against Q1 2020 and by 10.5% as against Q2 2019.

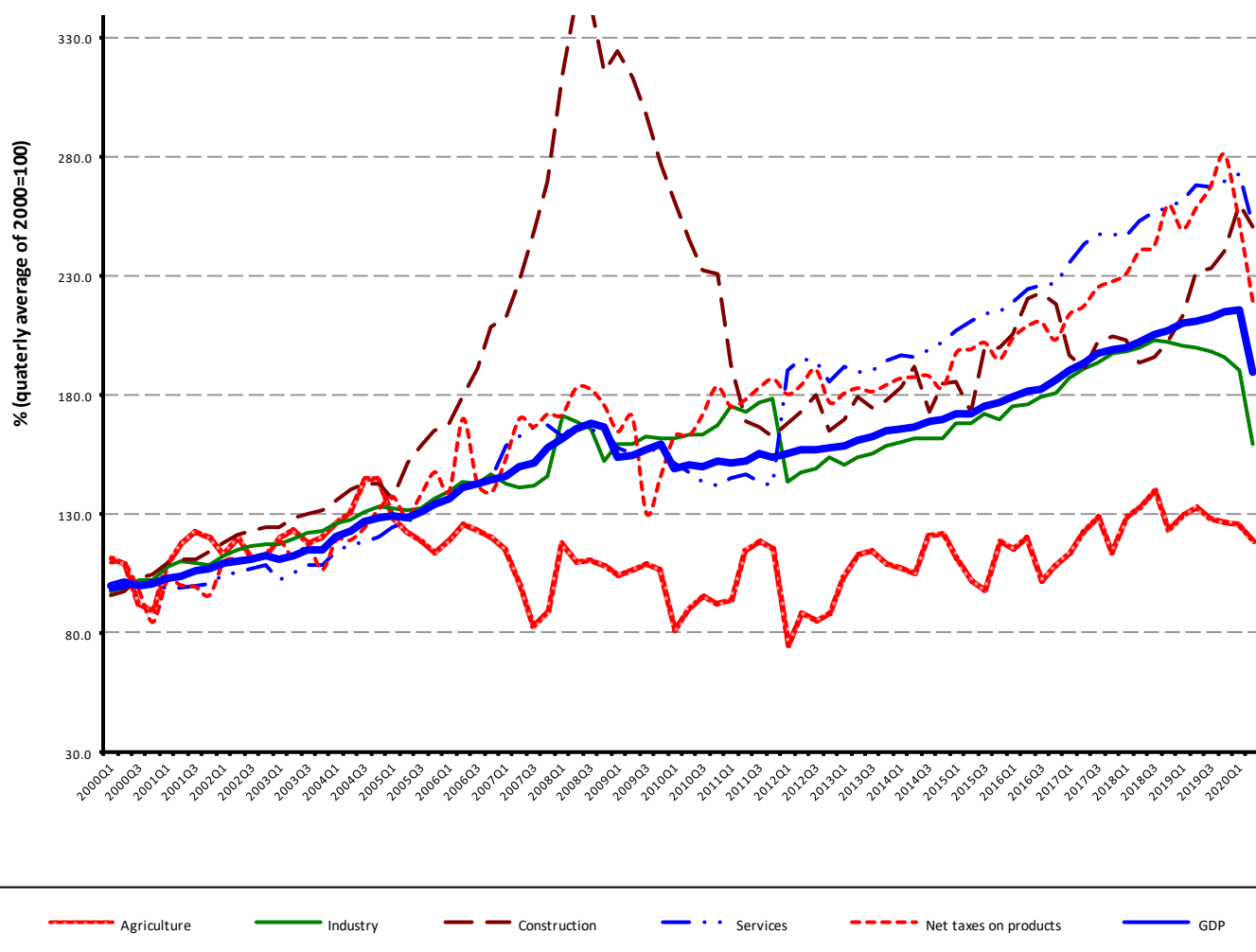
Table 2: GDP, in the first half of year 2020 - seasonally adjusted series

	Q1	Q2	First half of year
Millions RON, current prices	271993.6	238502.7	510496.3
In % as against the previous quarter	100.3	87.7	-
In % as against the corresponding period of the previous year	102.7	89.5	96.1

[The data of the table in Excel format](#)

**The Gross Domestic Product** estimated for the first half of 2020 amounted to 510496.3 million lei current prices, decreasing – in real terms – by 3.9% against the first half of 2019.

Grafic1: GDP - Seasonally adjusted series



[The data of the graph in Excel format](#)

## Unadjusted series

The **Gross Domestic Product estimated for Q2 2020** amounted to 224253.9 million lei current prices decreasing – in real terms – by 10.5% as against Q2 2019.

Table 3:GDP, in the first half of year 2020 - unadjusted series

	Q1	Q2	First half of year
Millions RON, current prices	215965.2	224253.9	440219.1
In % as against the corresponding period of the previous year	102.4	89.5	95.4

[The data of the table in Excel format](#)

**The Gross Domestic Product estimated for the first half of 2020** amounted to 440219.1 million lei current prices, decreasing – in real terms – by 4.6% as against the first half of 2019.

In tables 6, 7 and 8 the information on nominal GDP, volume indices and deflators – unadjusted and seasonally adjusted series – for Q2 and the first half of 2020 is presented.

## **The contribution of resources and uses to the growth rate of GDP**

### **Resources**

Almost all industries contributed to the GDP decrease in the first semester of 2020 as against the same period of 2019. Significant negative contributions had the following industries:

- Industry (-3.0%), with a share of 19.3% in GDP, whose activity volume decreased by 14.1%;
- Shows, culture and recreation activities; repair of households goods and other services (-1.1%), with a share of 2.8% in GDP, whose activity volume decreased by 29.1%;
- Wholesale and retail; motor-vehicles and motorcycles repair; transport and storage; hotels and restaurants (-0.9%), with a share of 20.1% in GDP, whose activity volume decreased by 4.8%.

Positive contribution were recorded by the following industries:

- Construction (+0.5%), with a share of 3.7% in GDP, whose activity volume increased by 15.5%;
- Information and communication (+0.7%), with a share of 7.2% in GDP, whose activity volume increased by 12.1%;
- Public administration and defence; social insurance of public sector; education; health and social assistance (+0.2%), with a share of 16.6% in GDP, whose activity volume increased by 1.5%.

Net taxes on products, with a share of 8.6% in GDP, contributed with -0.9% to the GDP growth rate, their volume decreasing by 9.0 %.

**Tabel 4: The contribution of GDP resources to the nominal value and growth rate of GDP, in Q2 and in the first half of 2020**

	Contribution to the nominal value of GDP - %		Contribution to the growth rate of GDP - %	
	Q2	First half of the year	Q2	First half of the year
Agriculture, forestry and fishing	2.4	2.2	-0.3	-0.1
Mining and quarrying; manufacturing; electricity, gas, steam and air conditioning production and supply; water supply; sewerage, waste management and decontamination activities	19.1	19.3	-4.6	-3.0
Construction	3.4	3.7	0.3	0.5
Wholesale and retail; repair of motor vehicles and motorcycles; transport and storage; hotels and restaurants	19.5	20.1	-2.6	-0.9
Information and communication	7.4	7.2	0.6	0.7
Financial intermediation and insurance	2.6	2.7	0.0	0.0
Real estate activities	9.6	8.7	-0.2	0.0
Professional, scientific and technical activities; activities of administrative services and support services	8.6	8.1	-0.5	0.0
Public administration and defence; social insurance of public sector; education; health and social assistance	16.1	16.6	0.3	0.2
Shows, culture and recreation activities; repair of households goods and other	2.0	2.8	-1.9	-1.1
<b>Gross value added</b>	<b>90.7</b>	<b>91.4</b>	<b>-8.9</b>	<b>-3.7</b>
<b>Net taxes on products</b>	<b>9.3</b>	<b>8.6</b>	<b>-1.6</b>	<b>-0.9</b>
<b>Gross domestic product</b>	<b>100.0</b>	<b>100.0</b>	<b>-10.5</b>	<b>-4.6</b>

[The data of the table in Excel format](#)

## Uses

From GDP uses standpoint, the decrease was mainly due to final consumption expenditure of households whose volume decreased by 5.3% contributing by -3.5% to the GDP growth rate.

Positive contribution were recorded for the following components:

- Gross fixed capital formation which contributed by +1.2% to the GDP growth rate as a result of it's volume increase by 5.8%;
- Collective final consumption expenditure of General government which contributed by +0.9% to the GDP growth rate as a result of it's volume increase by 8.7%.

The net export recorded a negative contribution to the GDP growth rate (-2.3%) being influenced by the volume decrease of exports of goods and services, by 15.1%, in correlation with a lower decrease of the volume of imports of goods and service, by 9.4%.

**Tabel 5: The contribution of GDP expenditure to the nominal value and growth rate of GDP, in Q2 and in the first half of 2020**

	Contribution to the nominal value of GDP - %		Contribution to the growth rate of GDP - %	
	Q2	First half of the year	Q2	First half of the year
<b>Total final consumption</b>	<b>83.2</b>	<b>85.1</b>	<b>-7.6</b>	<b>-2.6</b>
Actual individual consumption of households	71.9	73.4	-8.1	-3.5
Final consumption expenditure of households	61.8	64.1	-8.5	-3.5
Final consumption expenditure of Non-profit institutions serving households	0.5	0.4	0.0	0.0
Individual final consumption expenditure of General government	9.6	8.9	0.4	0.0
Collective final consumption expenditure of General government	11.3	11.7	0.5	0.9
<b>Gross fixed capital formation</b>	<b>26.5</b>	<b>21.9</b>	<b>0.4</b>	<b>1.2</b>
<b>Change in inventories</b>	<b>-4.8</b>	<b>-2.3</b>	<b>-0.9</b>	<b>-0.9</b>
<b>Net export</b>	<b>-4.9</b>	<b>-4.7</b>	<b>-2.4</b>	<b>-2.3</b>
Export of goods and services	34.2	41.4	-12.5	-7.1
Import of goods and services	39.1	46.1	-10.1	-4.8
<b>Gross domestic product</b>	<b>100.0</b>	<b>100.0</b>	<b>-10.5</b>	<b>-4.6</b>

[The data of the table in Excel format](#)

## Revisions

The seasonally adjusted series of quarterly Gross Domestic Product did not changed, the revision of the estimates for Q2 2020 as compared to the “flash” estimates published by Press release no. 214 of August 14, 2020 being insignificant.

The seasonally adjusted series are quarterly re-estimated due to the change in adopted models, in the number of regression factors used, in the unadjusted series and in the number of available observations.

**Tabel 6: GROSS DOMESTIC PRODUCT BY RESOURCES AND USES, IN Q2 2020**

- unadjusted series -

	Milions RON current prices	Volume indices – în % as against Q2 2019	Price indices – în % as against Q2 2019
Agriculture, forestry and fishing	5479.7	88.6	106.4
Minning and quarrying; manufacturing; electricity, gas, steam and air conditioning production and supply; water supply; sewerage, waste management and decontamination activities	42813.4	79.6	98.0
Construction	7645.1	109.0	84.2
Wholesale and retail; repair of motor vehicles and motorcycles; transport and storage; hotels and restaurants	43769.9	87.1	103.7
Information and communication	16584.2	110.4	104.2
Financial intermediation and insurance	5875.5	97.8	100.7
Real estate activities	21502.5	97.3	118.1
Professional, scientific and technical activities; activities of administrative services and support services	19354.6	93.2	104.9
Public administration and defence; social insurance of public sector; education; health and social assistance	36046.3	101.9	100.4
Shows, culture and recreation activities; repair of households goods and other services	4373.8	48.3	101.2
Gross value added	203445.0	90.1	102.3
Net taxes on products <sup>1)</sup>	20808.9	84.4	100.8
<b>Gross domestic product</b>	<b>224253.9</b>	<b>89.5</b>	<b>102.2</b>
Final consumption	186583.2	90.7	102.3
Actual individual consumption of households <sup>2)</sup>	161286.6	88.8	102.6
Final consumption expenditure of households	138612.4	86.7	103.0
Final consumption expenditure of Non-profit institutions serving households	1139.5	95.0	103.6
Individual final consumption expenditure of General government	21534.7	104.5	100.3
Collective final consumption expenditure of General government <sup>3)</sup>	25296.6	104.9	99.9
Gross capital formation	48621.3	97.6	95.9
of which:			
Gross fixed capital formation	59469.4	101.8	101.3
Net export	-10950.6	-	-
Export of goods and services	76708.9	71.5	100.4
Import of goods and services	87659.5	78.4	97.3

1) Represents the difference between taxes on product due to the State Budget (VAT, excise duties, other taxes) and product subsidies paid from the State Budget.

2) Comprises: expenditure of population households for purchasing goods and services in view to meet their members needs, the expenditure for individual consumption of public administration (education, health, social security and social activities, culture, sport, leisure activities, collection of household waste) and the expenditure for individual consumption of non-profit institutions serving households (religious organisations, trade unions, political parties, unions, foundations, cultural and sport associations).

3) Comprises the expenditure for collective consumption of public administration (general public services, national defence and territory security, public order and security, legislative and regulatory activities, research & development, etc.).

[The data of the table in Excel format](#)

**Tabel 7: GROSS DOMESTIC PRODUCT BY RESOURCES AND USES, IN Q2 2020**

- seasonally adjusted series -

	Millions RON current prices	Volume indices – în % as against Q1 2020	Price indices – în % as against Q1 2020
Agriculture, forestry and fishing	10857.5	94.4	102.7
Minning and quarrying; manufacturing; electricity, gas, steam and air conditioning production and supply; water supply; sewerage, waste management and decontamination activities	44941.3	83.5	93.4
Construction	15468.5	96.5	92.9
Wholesale and retail; repair of motor vehicles and motorcycles; transport and storage; hotels and restaurants	42809.6	88.4	95.3
Information and communication	16544.0	98.7	101.2
Financial intermediation and insurance	6237.6	100.1	94.5
Real estate activities	21253.6	98.2	110.8
Professional, scientific and technical activities; activities of administrative services and support services	20594.7	91.7	100.9
Public administration and defence; social insurance of public sector; education; health and social assistance	36681.5	100.6	98.0
Shows, culture and recreation activities; repair of households goods and other services	4611.8	47.2	117.5
Gross value added	220000.1	90.6	98.1
Net taxes on products <sup>1)</sup>	21796.2	86.4	110.9
Statistical discrepancy	-3293.6	-	-
<b>Gross domestic product</b>	<b>238502.7</b>	<b>87.7</b>	<b>99.9</b>
Final consumption	194718.8	85.4	103.5
Actual individual consumption of households <sup>2)</sup>	167878.6	84.6	102.9
Final consumption expenditure of households	144020.6	83.8	100.6
Final consumption expenditure of Non-profit institutions serving households	2147.0	95.9	104.0
Individual final consumption expenditure of General government	21711.0	103.3	104.8
Collective final consumption expenditure of General government <sup>3)</sup>	26840.2	100.9	97.4
Gross capital formation	58922.9	-184.1	-51.4
of which:			
Gross fixed capital formation	64665.9	99.9	100.9
Net export	-12458.5	-	-
Export of goods and services	75532.6	71.2	100.2
Import of goods and services	87991.1	75.3	99.0
Statistical discrepancy	-2680.5	-	-

1) Represents the difference between taxes on product due to the State Budget (VAT, excise duties, other taxes) and product subsidies paid from the State Budget.

2) Comprises: expenditure of population households for purchasing goods and services in view to meet their members needs, the expenditure for individual consumption of public administration (education, health, social security and social activities, culture, sport, leisure activities, collection of household waste) and the expenditure for individual consumption of non-profit institutions serving households (religious organisations, trade unions, political parties, unions, foundations, cultural and sport associations).

3) Comprises the expenditure for collective consumption of public administration (general public services, national defence and territory security, public order and security, legislative and regulatory activities, research & development, etc.).

[The data of the table in Excel format](#)



**Tabel 8: GROSS DOMESTIC PRODUCT BY RESOURCES AND USES, IN THE FIRST HALF OF 2020**

- unadjusted series -

	Millions RON current prices	Volume indices – în % as against the first half of 2019	Price indices – în % as against the first half of 2019
Agriculture, forestry and fishing	9568.2	93.3	106.5
Minning and quarrying; manufacturing; electricity, gas, steam and air conditioning production and supply; water supply; sewerage, waste management and decontamination activities	84922.1	85.9	102.4
Construction	16194.4	115.5	92.0
Wholesale and retail; repair of motor vehicles and motorcycles; transport and storage; hotels and restaurants	88681.0	95.2	104.4
Information and communication	31664.8	112.1	104.9
Financial intermediation and insurance	11776.4	98.2	104.5
Real estate activities	38257.2	99.8	110.5
Professional, scientific and technical activities; activities of administrative services and support services	35636.6	100.3	105.5
Public administration and defence; social insurance of public sector; education; health and social assistance	73328.4	101.5	103.1
Shows, culture and recreation activities; repair of households goods and other services	12213.8	70.9	103.7
Gross value added	402242.9	95.8	103.9
Net taxes on products <sup>1)</sup>	37976.2	91.0	95.1
<b>Gross domestic product</b>	<b>440219.1</b>	<b>95.4</b>	<b>103.1</b>
Final consumption	374870.6	97.0	102.5
Actual individual consumption of households <sup>2)</sup>	323464.9	95.3	102.5
Final consumption expenditure of households	282280.9	94.7	102.5
Final consumption expenditure of Non-profit institutions serving households	2035.5	98.3	103.7
Individual final consumption expenditure of General government	39148.5	100.1	102.6
Collective final consumption expenditure of General government <sup>3)</sup>	51405.7	108.7	102.8
Gross capital formation	86218.9	101.1	97.0
of which:			
Gross fixed capital formation	96245.2	105.8	102.1
Net export	-20870.4	-	-
Export of goods and services	182390.7	84.9	101.7
Import of goods and services	203261.1	90.6	98.3

1) Represents the difference between taxes on product due to the State Budget (VAT, excise duties, other taxes) and product subsidies paid from the State Budget.

2) Comprises: expenditure of population households for purchasing goods and services in view to meet their members needs, the expenditure for individual consumption of public administration (education, health, social security and social activities, culture, sport, leisure activities, collection of household waste) and the expenditure for individual consumption of non-profit institutions serving households (religious organisations, trade unions, political parties, unions, foundations, cultural and sport associations).

3) Comprises the expenditure for collective consumption of public administration (general public services, national defence and territory security, public order and security, legislative and regulatory activities, research & development, etc.).

[The data of the table in Excel format](#)

## Supplementary information:

For an accurate interpretation of the indicators, please see the [Methodological notes](#).

The data on quarterly GDP – unadjusted and seasonally adjusted series – for the period Q1 1995 – Q2 2020 is published on the INS website:

<https://insse.ro/cms/ro/content/produsul-intern-brut>

The Gross Domestic Product for Q2 2020, in provisional form (2), will be published in a press release, according to the schedule found on the INS website, on October 9, 2020.

Comparative data with the other European Union Member States are to be found in the Eurostat News Release to be published on September 8, 2020 which could be found following the link:

<https://ec.europa.eu/eurostat/news/news-releases>

### Communication Department

e-mail: [biroupresa@insse.ro](mailto:biroupresa@insse.ro)

Tel: + 4021 3181869