

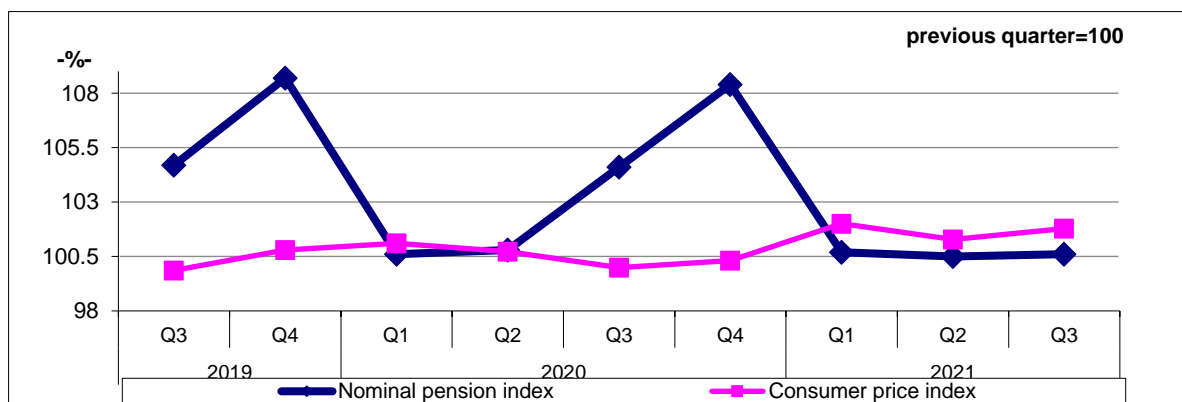
Domain: Social Protection

## THE AVERAGE MONTHLY PENSION INCREASED (+0.7%) IN THIRD QUARTER 2021 AS AGAINST OF THE PREVIOUS QUARTER

In the third quarter of 2021:

- **the average number of pensioners** was 5073 thousands persons, decreasing with 12 thousands persons as against of the previous quarter; average number of state social insurance pensioners was 4652 thousands persons, decreasing with 5 thousands persons as against of the previous quarter;
- **the average monthly pension** (is determined based on all amounts of pensions for all categories of pensioners –social insurance, invalidity, survivors etc.- paid by Pensions Houses<sup>1</sup>) was 1673 lei, increasing with 0.7% as against the previous quarter;
- **the average state monthly social insurance pension** was 1604 lei, and the ratio between the average nominal net pension of state social insurance for old age with full contribution stage (without tax and without health insurance contribution) and the average net earnings was 53.4% (as compared to 53.2% in the previous quarter);
- **the real pension index** as against of the previous quarter, calculated as the ratio between the nominal pension index (for calculation of real pension)\* and the consumer prices index, was 98.8%.

Evolution of nominal pension index and consumer price index during 2019-2021



[Data of the graph \(xls\).](#)

### Third quarter of 2021 compared with third quarter of 2020 (table pag.2)

- As compared with the third quarter of the previous year average number of pensioners decrease with 52 thousands persons, and the average number state social insurance pensioners decrease with 23 thousands persons;
- Monthly average pension and average state monthly social insurance pension increased as compared with the third quarter of the previous year, with 11.2% respectively 10.3%.

### Third quarter of 2021 compared with the second quarter of 2021 (table pag.2)

- The average number of pensioners decreased with 12 thousands persons as against of the previous quarter, while the average number of state social insurance pensioners decreased with 5 thousands persons;
- The average monthly pension and the average state monthly social insurance pension increased as against of the previous quarter, with 0.7% respectively 0.2%.

<sup>1</sup> Average monthly pension is determined based on the amounts paid pensioners by National House of Public Pensions, Ministry of Defense, Ministry of Internal Affairs, Romanian Intelligence Service, Ministry of Culture, Insurance House of Lawyers.

### The average number of pensioners and average monthly pension\*\*

	Average number - thousands persons -			Average monthly pension - lei/month -		
	Q.III 2020	Q.II 2021	Q.III 2021	Q.III 2020	Q.II 2021	Q.III 2021
<b>TOTAL</b>	<b>5125</b>	<b>5085</b>	<b>5073</b>	<b>1505</b>	<b>1661</b>	<b>1673</b>
<i>Of which, by pension system:</i>						
<b>Social insurance</b>	<b>5124</b>	<b>5084</b>	<b>5072</b>	<b>1505</b>	<b>1661</b>	<b>1674</b>
Of which, state social insurance	4675	4657	4652	1454	1601	1604
<i>Of which, social insurance by categories of pension :</i>						
A) Old age	4028	4023	4020	1685	1852	1865
B) Anticipated	15	14	13	1836	2171	2189
C) Partial anticipated	90	98	99	1455	1751	1800
D) Disability	468	435	427	728	768	761
E) Survivor	523	514	513	819	893	897

[Data of the table \(xls\).](#)

#### Third quarter 2021

The social insurance pensioners represent the majority ( 99.98%) of the total number of pensioners.

The state social insurance pensioners represent 91.7% out of the total insurance pensioners.

By categories of pensions, the number of social insurance pensioners was represented mainly (79.3%) by the number of old age pensioners. The anticipated and partial anticipated old age categories of pensioners represented 2.2%.

The total ratio between the average number of state social insurance pensioners and the one of employees was of 9 to 10; this ratio varies widely at territorial level, from only 4 pensioners to 10 employees in Ilfov, to 16 pensioners to 10 employees in Teleorman county, 15 to 10 in Vaslui county and 14 to 10 in Giurgiu county.

The average state monthly social insurance pension shows significant territorial disparities, the gap between the minimum and maximum value being 851 lei (1274 lei in Botoșani county, 1282 lei in Giurgiu county, 1297 lei in Vrancea county as compared to 2125 lei Hunedoara county, 2029 lei in Bucharest, and 1890 lei in Brașov county).

In the third quarter of 2021, the total number of beneficiaries of *EGO<sup>2</sup> no 6/2009 regarding the minimum guaranteed social pension* (social indemnity) was 927.2 thousands persons, of which:

- 792.6 thousands persons from state social insurance system, representing 17.0% out of the total pensioners of this category;
- 130.1 thousands persons from the former system of farmers representing 58.0% out of the total pensioners of this category;
- 4.5 thousands persons from military system, representing 2.4% out of the total of this category.

#### Thousand Additional information:

\*Real pension expresses the equivalent of goods and services that can be purchased or used with the average nominal net pension in a certain period of time compared to other periods, given the evolution of consumer prices index. The indicator is determined taking into account the amounts for pensions paid pensioners from state social insurance and for those from MAPN, MAI, SRI.

\*\* Average monthly pension is computed by dividing the entitled amounts of the paid pensioners from the reference quarter by the average monthly number multiplied by 3 (months).

For a correct interpretation of the indicators, please refer to the [Methodological notes attached to the press release on homepage](#).

The next press release on the average number of pensioners and average monthly pension will be on 16<sup>th</sup> of March 2022. Press release archive: <http://www.insse.ro/cms/en/comunicate-de-presa-view> .

**Directorate of Communication;** e-mail: [birouipresa@insse.ro](mailto:birouipresa@insse.ro); Tel: +4021 3181869

<sup>2</sup> According to art.7 of the Law no.118 / 2010 "... within the legal acts in force, the term guaranteed minimum social pension is replaced by the term social indemnity for pensioners" and from 1 March 2017, EGO no.6 / 18.02 .2009 was updated, with the introduction of social indemnity for pensioners in the military system, as well.