

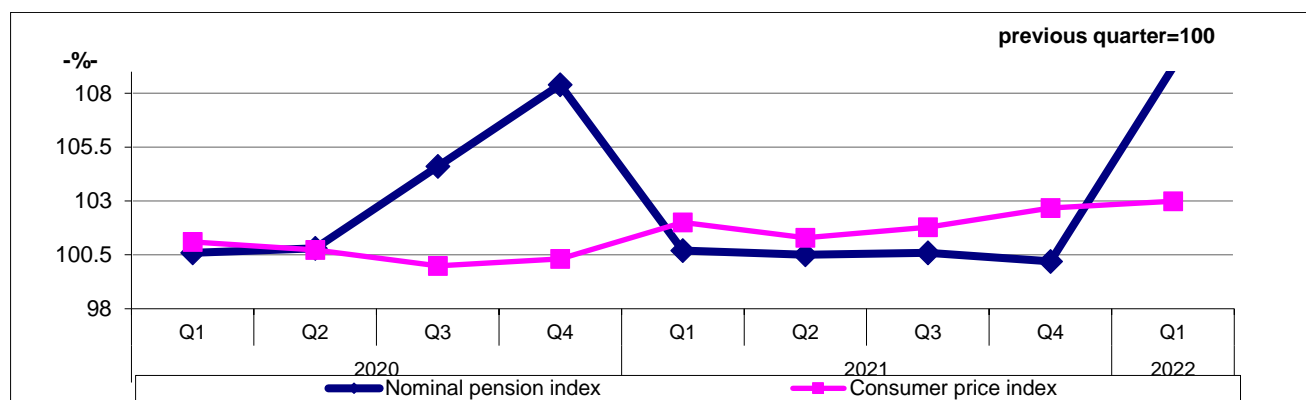
Domain: Social Protection

THE AVERAGE MONTHLY PENSION INCREASED (+9.9%) IN FIRST QUARTER 2022 AS AGAINST OF THE PREVIOUS QUARTER

In the first quarter of 2022:

- **the average number of pensioners** was 5024 thousands persons, decreasing with 34 thousands persons as against of the previous quarter; average number of state social insurance pensioners was 4617 thousands persons, decreasing with 26 thousands persons as against of the previous quarter;
- **the average monthly pension** (is determined based on all amounts of pensions for all categories of pensioners –social insurance, invalidity, survivors etc.- paid by Pensions Houses¹) was 1846 lei, increasing with 9.9% as against the previous quarter;
- **the average state monthly social insurance pension** was 1772 lei, and the ratio between the average nominal net pension of state social insurance for old age with full contribution stage (without tax and without health insurance contribution) and the average net earnings was 54.4% (as compared to 50.9% in the previous quarter);
- **the real pension index** as against of the previous quarter, calculated as the ratio between the nominal pension index (for calculation of real pension)* and the consumer prices index, was 106.0%.

Evolution of nominal pension index and consumer price index during 2020-2022



[Data of the graph \(xls\).](#)

First quarter of 2022 compared with first quarter of 2021 (table pag.2)

- As compared with the first quarter of the previous year average number of pensioners decrease with 75 thousands persons, and the average number state social insurance pensioners decrease with 48 thousands persons;
- Monthly average pension and average state monthly social insurance pension increased as compared with the third quarter of the previous year, with 11.9% respectively 11.0%.

First quarter of 2022 compared with the fourth quarter of 2021 (table pag.2)

- The average number of pensioners decreased with 34 thousands persons as against of the previous quarter, while the average number of state social insurance pensioners decreased with 26 thousands persons;
- The average monthly pension and the average state monthly social insurance pension increased as against of the previous quarter, with 9.9% respectively 10.2%.

¹ Average monthly pension is determined based on the amounts paid pensioners by National House of Public Pensions, Ministry of Defense, Ministry of Internal Affairs, Romanian Intelligence Service, Ministry of Culture, Insurance House of Lawyers.

The average number of pensioners and average monthly pension**

	Average number - thousands persons-			Average monthly pension -lei/month -		
	Q.I 2021	Q.IV 2021	Q.I 2022	Q.I 2021	Q.IV 2021	Q.I 2022
TOTAL	5099	5058	5024	1650	1679	1846
<i>Of which, by pension system:</i>						
Social insurance	5098	5057	5023	1651	1679	1846
Of which, state social insurance	4665	4643	4617	1597	1608	1772
<i>Of which, social insurance by categories of pension :</i>						
A) Old age	4028	4012	3989	1842	1870	2052
B) Anticipated	14	12	11	2132	2227	2477
C) Partial anticipated	96	103	103	1685	1844	2067
D) Disability	444	422	417	775	757	826
E) Survivor	516	508	503	889	897	996

[Data of the table \(xls\).](#)

First quarter 2022

The social insurance pensioners represent the majority (99.98%) of the total number of pensioners.

The state social insurance pensioners represent 91.9% out of the total insurance pensioners.

By categories of pensions, the number of social insurance pensioners was represented mainly (79.4%) by the number of old age pensioners. The anticipated and partial anticipated old age categories of pensioners represented 2.3%.

The total ratio between the average number of state social insurance pensioners and the one of employees was of 8 to 10; this ratio varies widely at territorial level, from only 4 pensioners to 10 employees in Ilfov, to 15 pensioners to 10 employees in Teleorman county, 14 to 10 in Giurgiu and Vaslui counties .

The average state monthly social insurance pension shows significant territorial disparities, the gap between the minimum and maximum value being 943 lei (1407 lei in Botoşani county, 1419 lei in Giurgiu county, 1426 lei in Vrancea county as compared to 2350 lei Hunedoara county, 2245 lei in Bucharest, and 2084 lei in Braşov county).

In the first quarter of 2022, the total number of beneficiaries of *EGO² no 6/2009 regarding the minimum guaranteed social pension* (social indemnity) was 1165.2 thousands persons, of which:

- 1026.4 thousands persons from state social insurance system, representing 22.2% out of the total pensioners of this category;
- 132.3 thousands persons from the former system of farmers representing 64.2% out of the total pensioners of this category;
- 6.5 thousands persons from military system, representing 3.4% out of the total of this category.

Thousand Additional information:

*Real pension expresses the equivalent of goods and services that can be purchased or used with the average nominal net pension in a certain period of time compared to other periods, given the evolution of consumer prices index. The indicator is determined taking into account the amounts for pensions paid pensioners from state social insurance and for those from MAPN, MAI, SRI.

** Average monthly pension is computed by dividing the entitled amounts of the paid pensioners from the reference quarter by the average monthly number multiplied by 3 (months).

For a correct interpretation of the indicators, please refer to the [Methodological notes attached to the press release on homepage](#).

The next press release on the average number of pensioners and average monthly pension will be on 13th of September 2022. Press release archive: <http://www.insse.ro/cms/en/comunicate-de-presa-view> .

Directorate of Communication; e-mail: birouipresa@insse.ro; Tel: +4021 3181869

² According to art.7 of the Law no.118 / 2010 "... within the legal acts in force, the term guaranteed minimum social pension is replaced by the term social indemnity for pensioners" and from 1 March 2017, EGO no.6 / 18.02 .2009 was updated, with the introduction of social indemnity for pensioners in the military system, as well.