

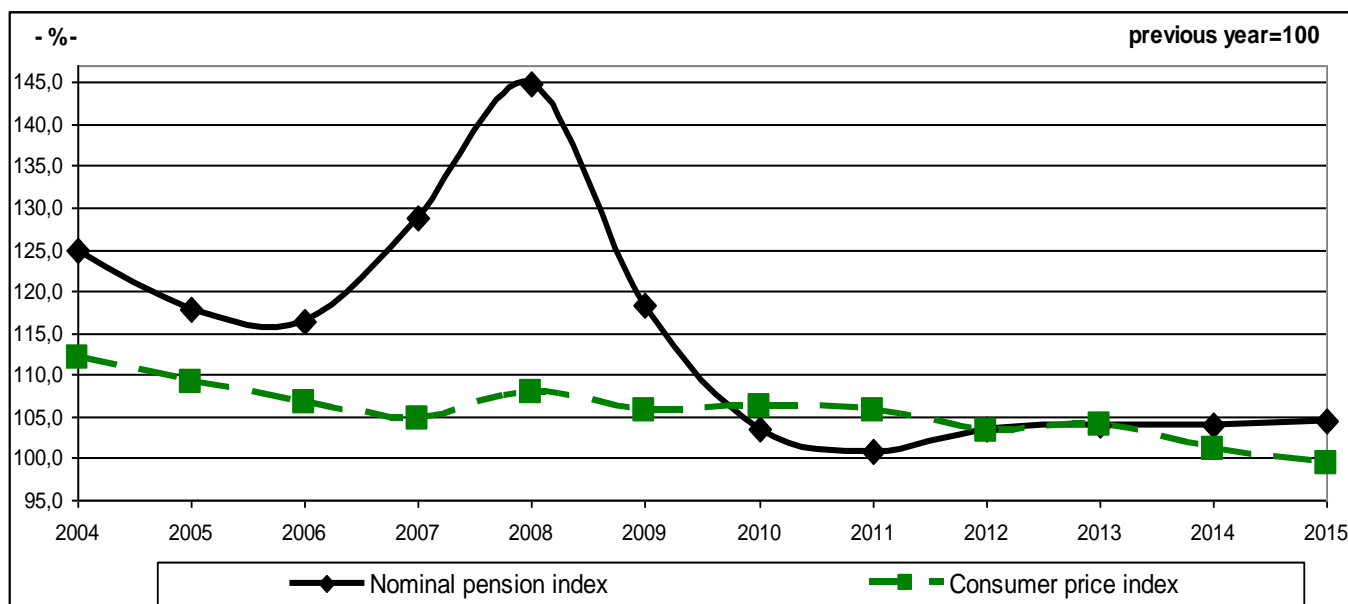
Field: Social Protection

51 THOUSANDS PENSIONERS LESS IN 2015 AS AGAINST OF THE PREVIOUS YEAR

In 2015:

- **the average number of pensioners** was 5306 thousands persons, decreasing with 51 thousands persons as against of the previous year; the ratio between the average number of state social insurance pensioners and the one of employees was of 10 to 10;
- **the average monthly pension** was 892 lei, increasing with 5.4% as against the previous year;
- **average state monthly social insurance pension** was 886 lei, and the ratio between the average pension of state social insurance old age with full contribution stage (without tax and without health insurance contribution) and the average net earnings was 57.8% (as compared to 60.6% in the previous year);
- **the real pension index** as against of the previous year, calculated as the ratio between the nominal pension index and the consumer prices index, was 105.0%.

Evolution of nominal pension index and consumer price index during 2004-2015



Data of the graph (xls) can be accessed by [file.rar](#) attached to the press release on homepage

The ratio between the average number of state social insurance pensioners and the one of employees varies widely at territorial level, from only 5 employees to 10 pensioners in Bucharest to 17 to 10 in Giurgiu county.

Average state monthly social insurance pension shows significant territorial disparities, with a gap between the minimum and maximum value of over 400 lei (711 lei in Giurgiu county as compared to 1122 lei in Bucharest).

Social insurance pensioners represent the majority (99.9%) of the total number of pensioners.

State social insurance pensioners represent 88.3% out of the total insurance pensioners.

By categories of pensions, the number of social insurance pensioners was represented mainly (73.9%) by the number old age pensioners.

The anticipated and partial anticipated old age categories of pensioners represented 2.1%.

The average number of pensioners and average monthly pension

	Average number - thousands persons-		Average monthly pension -lei/month -	
	2014	2015	2014	2015
TOTAL	5357	5306	846	892
<i>Of which, by pension system:</i>				
Social insurance	5352	5302	847	893
Of which, state social insurance	4682	4683	845	886
<i>Of which, social insurance by categories of pension :</i>				
A) Old age	3916	3920	958	1010
B) Anticipated	19	23	1050	1077
C) Partial anticipated	96	86	638	632
D) Disability	713	679	583	584
E) Survivor	608	594	468	499

Data of the table (xls) can be accessed by file.rar attached to the press release on homepage

In 2015, the total number of beneficiaries of *EGO no 6/2009 regarding the minimum guaranteed social pension* (social indemnity) was 608.2 thousands persons, of which:

- 478.2 thousands persons from state social insurance system, representing 10.2% out of the total pensioners of this category;
- 130.0 thousands persons from the former system of farmers representing 28.0% out of the total pensioners of this category

Additional information:

For a correct interpretation of the indicators, please refer to the [Methodological notes attached to the press release on homepage](#).

The next press release on the average number of pensioners and average monthly pension will be on 13th of June 2016.

Press release archive: <http://www.insse.ro/cms/en/comunicate-de-pres-a-view>

Communication department

e-mail: birouapresa@insse.ro

Tel: +4021 3181868