

Area: Labour Market

HIGHER HOURLY LABOUR COST IN QUARTER IV 2023

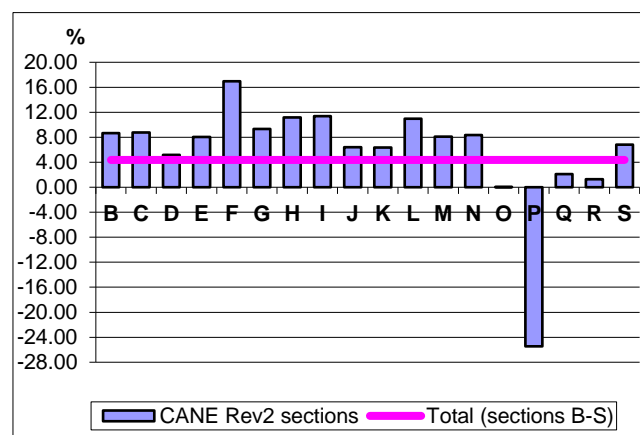
- In quarter IV 2023 compared to the quarter III 2023, **the adjusted hourly labour cost (working days adjusted)** registered an increase rate of 4.37%.
- In quarter IV 2023 compared to the quarter IV 2022, **the adjusted hourly labour cost (working days adjusted)** registered an increase rate of 16.85%.

Quarter IV 2023 compared to Quarter III 2023

As against the Quarter III 2023, hourly labour cost (working days adjusted) increased in the majority of economic activities.

The most significant increases of the hourly labour cost (working days adjusted) were found in construction (16.94%), accommodation and food service activities (11.40%), transportation and storage (11.19%), respectively in real estate activities (10.95%).

The quarterly labour cost index^{p)}
- percentage change, Quarter IV 2023 compared to
Quarter III 2023 -
(working days adjusted)



^{p)} provisional data

The NACE Rev.2 sections are detailed in "Methodological notes".

[Graph data \(xls\)](#)

Compared to the analysed period, the decrease of the hourly labour cost (working days adjusted)

were noticed only in education (-25.45%), determined by the time actually worked increase (a phenomenon characteristic of this activity in the fourth quarter of each year determined by the starting of the new school year).

As against the previous quarter, the direct costs¹ component (wages and salaries) increased by 4.34% and the other costs¹ component (non-wages costs) by 4.93%.

Quarter IV 2023 compared to Quarter IV 2022

As compared to the same quarter of the previous year, the hourly labour cost (working days adjusted) increased in all economic activities.

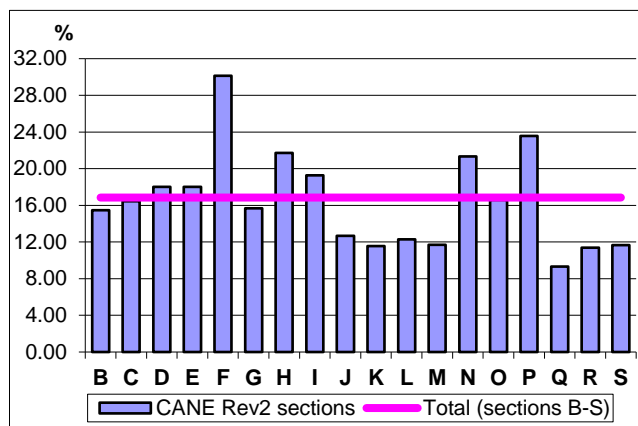
The most significant increases of the hourly labour cost (working days adjusted) were found in construction (30.15%), education² (23.58%), transportation and storage (21.72%), respectively in administrative and support service activities (21.33%).

As compared to quarter IV 2022, the hourly labour cost (working days adjusted) increased the least in human health and social work activities (9.31%), arts, entertainment and recreation (11.38%), financial and insurance activities (11.54%), other service activities (11.66%), respectively in professional, scientific and technical activities (11.69%).

¹ for the working days adjusted index

² sector influenced by the implementation of E.O. no. 57 June 12, 2023 for the establishment of measures regarding the salary of the staff from the national state education system

**The quarterly labour cost index^{p)}
- percentage change, Quarter IV 2023 compared to
Quarter IV 2022 -
(working days adjusted)**



^{p)} provisional data

The NACE Rev.2 sections are detailed in "Methodological notes".

[Graph data \(xls\)](#)

As against the same quarter of the previous year, the direct costs component¹ (wages and salaries) increased in quarter IV 2023 by 16.86% and the other costs component¹ (non-wages costs) by 16.74%.

Additional information:

The **quarterly labour cost index** is a short-term indicator that reflects the evaluation of the tendencies of the hourly costs incurred by employers with labour force.

For an accurate interpretation of the indicators, please see the [Methodological notes attached to the press release on the homepage](#).

The quarterly labour cost index is presented in the [Annex](#).

Additional information can be obtained on-line accessing:

- TEMPO database (starting with March 5th, 2024):
<http://statistici.insse.ro:8077/tempo-online/#/pages/tables/insse-table>
- the publication Monthly Statistical Bulletin no. 1/2024:
<https://insse.ro/cms/en/publicatii-statistice-in-format-electronic>

The next press release on *labour cost index* (Quarter I 2024) will be issued on June 4th, 2024.

Press release archive:

<http://www.insse.ro/cms/en/comunicate-de-presa-view>

Directorate of Communication

e-mail: birou presa@insse.ro

Tel: +4021 3181869