

Area: Labour Market

HIGHER HOURLY LABOUR COST IN QUARTER IV 2021

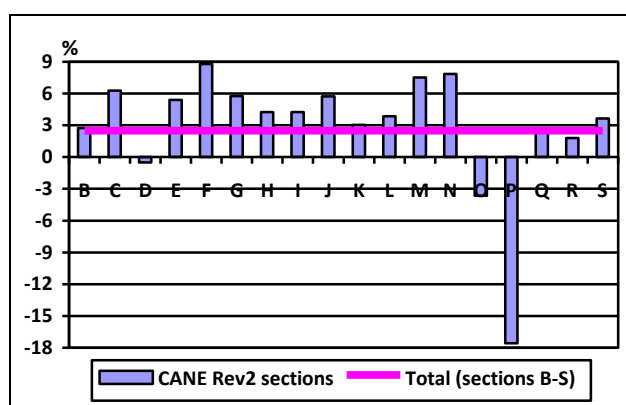
- In quarter IV 2021 compared to the quarter III 2021, **the adjusted hourly labour cost (working days adjusted)** registered an increase rate of 2.49%.
- In quarter IV 2021 compared to the quarter IV 2020, **the adjusted hourly labour cost (working days adjusted)** registered an increase rate of 6.73%.

Quarter IV 2021 compared to Quarter III 2021

As against the Quarter III 2021, hourly labour cost (working days adjusted) increased in the majority of economic activities.

The most significant increases of the hourly labour cost (working days adjusted) were found in construction (8.80%), administrative and support service activities (7.86%) and professional, scientific and technical activities (7.53%).

The quarterly labour cost index^{p)}
- percentage change, Quarter IV 2021 compared to
Quarter III 2021 -
(working days adjusted)



^{p)} provisional data

The NACE Rev.2 sections are detailed in "Methodological notes".

[Graph data \(xls\)](#)

Compared to Quarter III 2021, the most significant decrease of the hourly labour cost (working days adjusted) was registered in education (-17.57%), determined by the time

actually worked increase (a phenomenon characteristic of this activity in the fourth quarter of each year determined by the starting of the new school year).

At a considerable distance, with decreases of the hourly labour cost (working days adjusted) were situated public administration (-3.66%), respectively electricity, gas, steam and air conditioning supply (-0.49%).

As against the previous quarter, the direct costs¹ component (wages and salaries) increased by 2.48% and the other costs¹ component (non-wages costs) by 2.72%.

Quarter IV 2021 compared to Quarter IV 2020

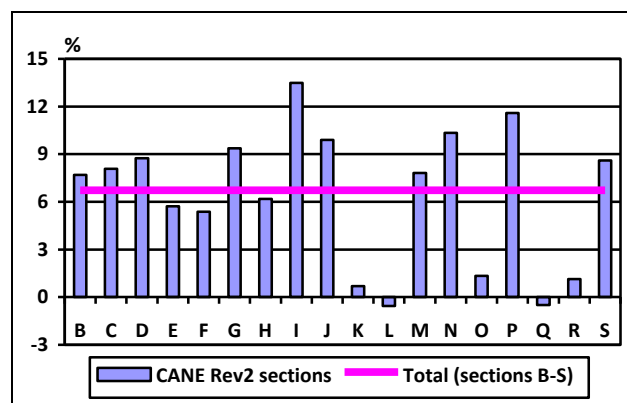
As compared to the same quarter of the previous year, the hourly labour cost (working days adjusted) increased in the majority of economic activities.

The most significant increases of the hourly labour cost (working days adjusted) were found in accommodation and food service activities (13.49%), education² (11.59%), respectively in administrative and support service activities (10.33%)

Compared to the analysed period, slight decreases of the hourly labour cost (working days adjusted) were noticed only in real estate

activities (-0.55%) respectively in human health and social work activities (-0.50%).

The quarterly labour cost index^{p)}
- percentage change, Quarter IV 2021 compared to
Quarter IV 2020 -
(working days adjusted)



^{p)} provisional data

The NACE Rev.2 sections are detailed in "Methodological notes".

[Graph data \(xls\)](#)

As against the same quarter of the previous year, the direct costs component¹ (wages and salaries) increased by 6.76% and the other costs component¹ (non-wages costs) by 6.14%.

Additional information

The **quarterly labour cost index** is a short-term indicator that reflects the evaluation of the tendencies of the hourly costs incurred by employers with labour force.

For an accurate interpretation of the indicators, please see the [Methodological notes](#) attached to the press release on the homepage.

The quarterly labour cost index is presented in the [Annex](#).

Additional information can be obtained on-line accessing:

- TEMPO database (starting with 4th March 2022):
<http://statistici.insse.ro:8077/tempo-online/#/pages/tables/insse-table>
- the publication Monthly Statistical Bulletin no. 1/2022:
<https://insse.ro/cms/en/publicatii-statistice-in-format-electronic>

The next press release on *labour cost index* (Quarter I 2022) will be issued on June 3rd, 2022.

Press release archive:

<http://www.insse.ro/cms/en/comunicate-de-presa-view>

Directorate of Communication

e-mail: birou presa@insse.ro

Tel: +4021 3181869

¹ for the working days adjusted index

² sector influenced by the evolution of the time actually worked in each quarter according to the school holidays