

Area: Labour Market

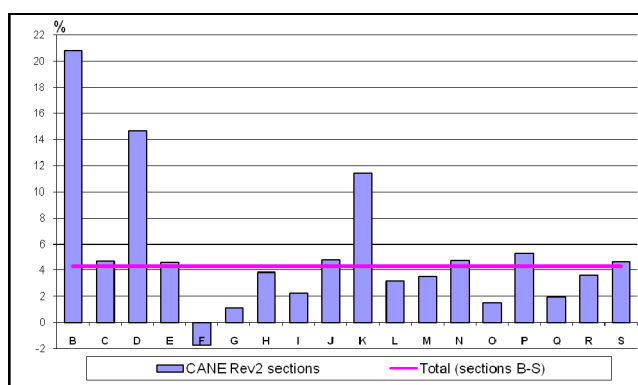
QUARTERLY LABOUR COST INDEX HIGHER IN QUARTER II 2015¹⁾

- In Quarter II 2015, the **adjusted hourly labour cost (working days adjusted)** registered an increase rate of 4.31% by comparison with the previous quarter and of 7.66% by comparison with the same quarter of the previous year.
- As against the same periods of reference, the non-adjusted hourly labour cost varied insignificantly compared to the adjusted form (4.20%, respectively 7.64%).

Quarter II 2015 compared to Quarter I 2015

Compared to Quarter I 2015, the hourly labour cost (working days adjusted) increased in the majority of economic activities. The most significant increases were recorded in mining and quarrying (20.74%), electricity, gas, steam and air conditioning supply (14.62%) and financial and insurance activities (11.42%).

The quarterly labour cost index^{p)}
- percentage change, Quarter II 2015 compared to
Quarter I 2015 -
(working days adjusted)



^{p)} provisional data

[Graph data \(xls\)](#)

The decrease of the hourly labour cost (working days adjusted) was registered only in construction (-1.72%).

As against the previous quarter, in Quarter II 2015, the increase (for the working days adjusted index) of the direct costs component (wages and salaries) was of 4.29%, while the one concerning the other costs (non-wages costs) was of 4.39%. The increases registered by the two components – for the non-adjusted index – were of 4.18%, respectively 4.27%.

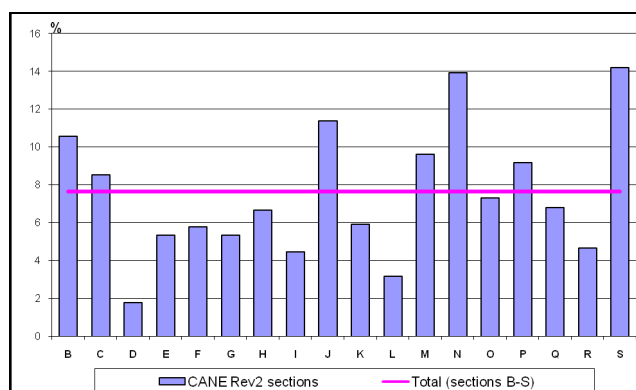
Quarter II 2015 compared to Quarter II 2014

By main economic activities, the highest increases of the hourly labour cost (working days adjusted) were observed in other service activities (14.19%), administrative and support service activities (13.92%) and information and communication (11.38%).

The lowest increase was registered in electricity, gas, steam and air conditioning supply (1.77%).

¹⁾ In the first quarter of 2015 the whole series of data (2000-2014) were recalculated by changing the base year from 2008 to 2012.

The quarterly labour cost index^{p)}
- percentage change, Quarter II 2015 compared to
Quarter II 2014 -
(working days adjusted)



^{p)} provisional data

[Graph data \(xls\)](#)

As against the same quarter of the previous year, the increase – working days adjusted index – for the direct costs component (wages and salaries) was of 7.66%, while for the non-adjusted index was of 7.64%. The other costs component (non-wages costs) registered similar increase (7.66%, respectively 7.64%).

Additional information

For an accurate interpretation of the indicators, please see the [Methodological notes](#)

The quarterly labour cost index are presented in the [Annex](#).

Additional information can be obtained from the publication *Monthly Statistical Bulletin no.7/2015* or on-line accessing TEMPO database:

<http://statistici.insse.ro/shop/index.jsp?page=tempo2&lang=en&context=15>

The next press release on *labour cost index* will be issued on December 4th, 2015.

Press release archive:

<http://www.insse.ro/cms/en/content/press-releases>

Communication Department

e-mail: birou presa@insse.ro

Tel: +4021 3181869