

Domain: Industry

The quantity of cow's milk collected by processing units in December 2019

- The quantity of cow's milk collected by processing units from agricultural holdings and collection centres in December 2019 increased by 4.1% compared to November 2019 and was up 0.1% from December 2018.
- The quantity of cow's milk collected by processing units from agricultural holdings and collection centres in the 1.I-31.XII.2019 period rose by 1.1% compared to the 1.I-31.XII.2018 period.

The quantity of cow's milk collected by processing units and milk products obtained

	MU	December 2018 ^{r)}	November 2019	December 2019	1.I-31.XII. 2018 ^{**)} ^{r)}	1.I-31.XII. 2019 ^{**)}
Cow's milk collected by processing units	tonnes	84597	81349	84644	1109771	1122327
Average fat content	%	3.90	3.87	3.93	3.79	3.81
Average protein content	%	3.33	3.31	3.31	3.28	3.28
Imported raw milk	tonnes	10110	11173	11673	124310	108492
Milk products obtained						
Drinking milk	tonnes	26960	28921	31452	306221	331344
Cream	tonnes	5910	5472	6240	66887	68114
Acidified milk ^{*)}	tonnes	15626	17022	16629	215214	225487
Butter	tonnes	1108	936	1099	10881	10653
Cheese products – total –	tonnes	6764	7318	7065	94285	96717
of which: exclusively from cow's milk	tonnes	5790	6540	6652	79698	83047

Provisional data; ^{r)} rectified data; [The data of the table in xls format](#)

^{*)} It includes yogurt, drinking yogurt, curd and other similar milk products.

^{**)} Due to rounding and the revision of the monthly data, the data related to the cumulated periods may differ from the ones resulting from summing up the months.

December 2019 compared to November 2019

The quantity of cow's milk collected by processing units in December 2019 increased by 3295 tonnes (+4.1%) compared to the previous month.

Increases in production were recorded for butter, with 163 more tonnes produced (+17.4%), cream, for which a 768 tonne rise (+14.0%) was reported, and drinking milk, with 2531 more tonnes produced (+8.8%).

Decreases in production were recorded for cheese products, with 253 less tonnes produced (-3.5%), and acidified milk (yogurt, drinking yogurt, curd and other similar milk products), for which a 393 tonne drop (-2.3%) was reported.

The quantity of raw milk imported by processing units rose by 500 tonnes (+4.5%) in December 2019 compared to the previous month.

December 2019 compared to December 2018

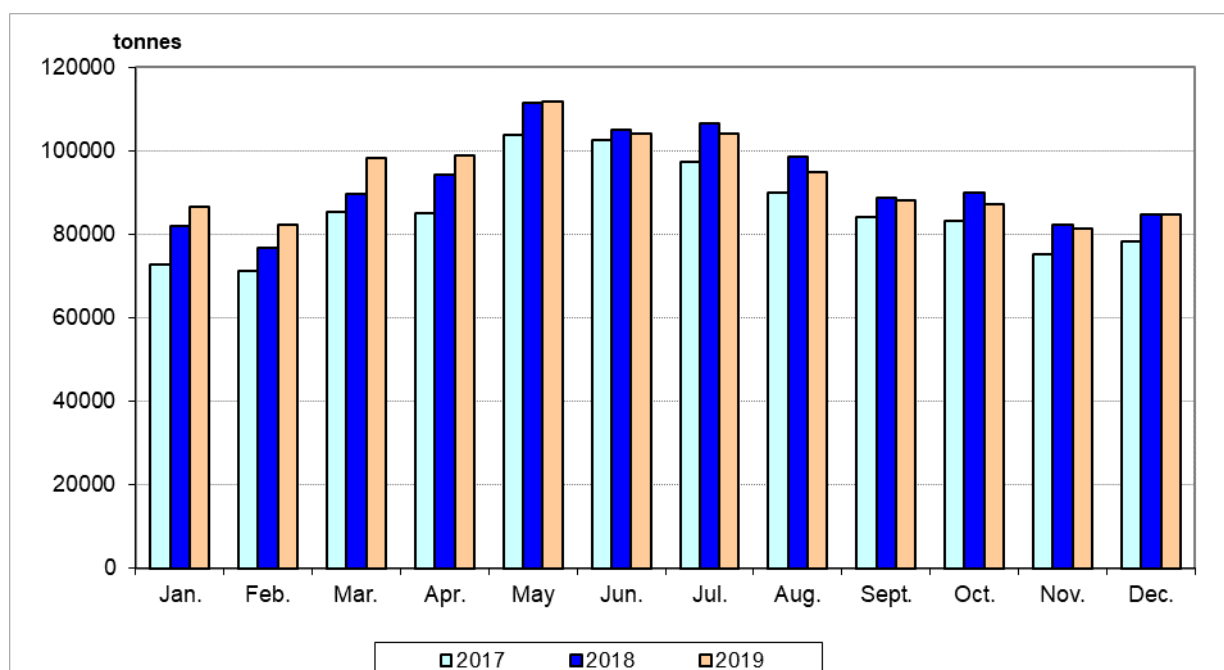
The quantity of cow's milk collected by processing units in December 2019 was up 47 tonnes (+0.1%) from the same month of the previous year.

Increases in production were recorded for drinking milk, for which a 4492 tonne rise (+16.7%) was reported, acidified milk (yogurt, drinking yogurt, curd and other similar milk products), with 1003 more tonnes produced (+6.4%), cream, for which a 330 tonne rise (+5.6%) was reported, and cheese products, with 301 more tonnes produced (+4.5%).

A decrease in production was recorded for butter, with 9 less tonnes produced (-0.8%).

The quantity of raw milk imported by processing units was up 1563 tonnes (+15.5%) in December 2019 from the same month of the previous year.

Evolution of the quantity of cow's milk collected by processing units



[The data of the graph in xls format](#)

The 1.I-31.XII.2019 period compared to the 1.I-31.XII.2018 period

The quantity of cow's milk collected by processing units in the 1.I-31.XII.2019 period rose by 12556 tonnes (+1.1%) compared to the 1.I-31.XII.2018 period.

Increases in production were recorded for drinking milk, for which a 25123 tonne rise (+8.2%) was reported, acidified milk (yogurt, drinking yogurt, curd and other similar milk products), with 10273 more tonnes produced (+4.8%), cheese products, for which a 2432 tonne rise (+2.6%) was reported, and cream, with 1227 more tonnes produced (+1.8%).

The production of butter decreased by 228 tonnes (-2.1%).

The quantity of raw milk imported by processing units was down 15818 tonnes (-12.7%) in the 1.I-31.XII.2019 period from the 1.I-31.XII.2018 period.

Further information:

For an accurate interpretation of the indicators, please see the [Methodological explanations attached to the press release on the homepage](#).

For more information, see the Industry Statistical Bulletin (date of issue 21 February 2020).

The next press release will be issued on Wednesday, 11 March 2020.

Press release archive: <http://www.insse.ro/cms/en/comunicate-de-presa-view>

Communication Directorate

E-mail: biroupresa@insse.ro

Tel: +4021 3181869