



Domain: Industry

The quantity of cow's milk collected by processing units in November 2016 down 0.1% from November 2015

- The quantity of cow's milk collected by processing units from agricultural holdings and collection centres in November 2016 decreased by 8.8% compared to October 2016 and was down 0.1% from November 2015.
- The quantity of cow's milk collected by processing units from agricultural holdings and collection centres in the 1.I-30.XI.2016 period increased by 4.1% compared to the 1.I-30.XI.2015 period.

The quantity of milk collected by processing units and milk products obtained

	MU	November 2015	October 2016	November 2016	1.I-30.XI. 2015	1.I-30.XI. 2016
Cow's milk collected by processing units	tonnes	67302	73744	67232	847640	882722
Average fat content	%	3.83	3.84	3.89	3.75	3.77
Average protein content	%	3.28	3.28	3.29	3.26	3.26
Imported raw milk	tonnes	10689	12420	13578	87651	112209
Milk products obtained						
Drinking milk	tonnes	22209	24357	23959	236388	250773
Cream	tonnes	5588	6052	5561	60653	63273
Acidified milk*)	tonnes	15725	16324	16132	175773	183175
Butter	tonnes	1098	1203	1218	9895	10660
Cheese products – total –	tonnes	5742	6439	6149	75363	81467
of which: cheese obtained exclusively from cow's milk	tonnes	5292	5966	5615	63605	68216

The data for 2015 are final, and the ones for 2016 are provisional.

*) It includes yogurt, drinking yogurt, curd and other similar milk products.

[The data of the table in xls format](#)

November 2016 compared to October 2016

The quantity of cow's milk collected by processing units in November 2016 decreased by 6512 tonnes (-8.8%) compared to the previous month.

Decreases in production were recorded for cream, with 491 less tonnes produced (-8.1%) in November 2016 than in October 2016, cheese products, for which a 290 tonne drop (-4.5%) was reported, drinking milk, with 398 less tonnes produced (-1.6%), and acidified milk (yogurt, drinking yogurt, curd and other similar milk products), for which a 192 tonne drop (-1.2%) was reported.

An increase in production in November 2016 compared to the previous month was recorded for butter, with 15 more tonnes produced (+1.2%).

The quantity of imported raw milk increased by 1158 tonnes (+9.3%) in November 2016 compared to October 2016.

November 2016 compared to November 2015

The quantity of cow's milk collected by processing units in November 2016 was down 70 tonnes (-0.1%) from the same month of the previous year.

A decrease in production was recorded for cream, with 27 less tonnes produced (-0.5%) in November 2016 than in November 2015.

Increases in production were recorded for butter, with 120 more tonnes produced (+10.9%), drinking milk, for which a 1750 tonne rise (+7.9%) was reported, cheese products, with 407 more tonnes produced (+7.1%), and acidified milk (yogurt, drinking yogurt, curd and other similar milk products), for which a 407 tonne rise (+2.6%) was reported.

The quantity of imported raw milk increased by 2889 tonnes (+27.0%) in November 2016 compared to the same month of the previous year.

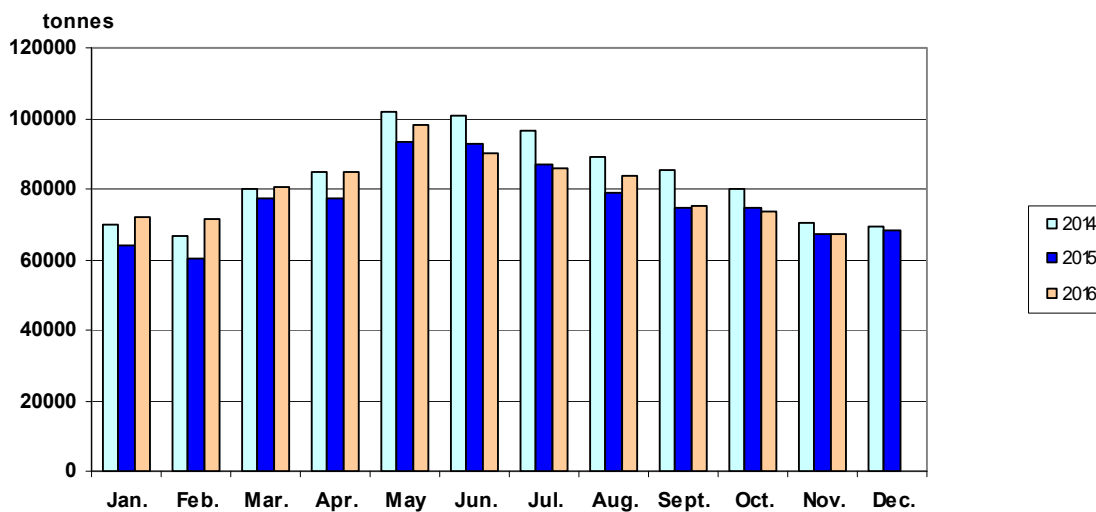
The 1.I-30.XI.2016 period compared to the 1.I-30.XI.2015 period

The quantity of cow's milk collected by processing units in the 1.I-30.XI.2016 period rose by 35082 tonnes (+4.1%) compared to the 1.I-30.XI.2015 period.

Increases in production were recorded for cheese products, for which a 6104 tonne rise (+8.1%) was reported in the 1.I-30.XI.2016 period compared to the 1.I-30.XI.2015 period, butter, with 765 more tonnes produced (+7.7%), drinking milk, for which a 14385 tonne rise (+6.1%) was reported, cream, with 2620 more tonnes produced (+4.3%), and acidified milk (yogurt, drinking yogurt and other similar milk products), with 7402 more tonnes produced (+4.2%).

The quantity of imported raw milk was up 24558 tonnes (+28.0%) in the 1.I-30.XI.2016 period from the 1.I-30.XI.2015 period.

Evolution of the quantity of cow's milk collected by processing units



[The data of the graph in xls format](#)

Further information:

For an accurate interpretation of the indicators, please see the [Methodological explanations attached to the press release on the homepage](#).

The next press release will be issued on Thursday, 9 February 2017.

Press release archive: <http://www.insse.ro/cms/en/comunicate-de-presa-view>

Communication Directorate

E-mail: biroupresa@insse.ro

Tel: +4021 3181869