



Domain: Industry

The quantity of cow's milk collected by processing units in September 2017 down 6.5% from August 2017

- The quantity of cow's milk collected by processing units from agricultural holdings and collection centres in September 2017 decreased by 6.5% compared to August 2017 and was up 11.5% from September 2016.
- The quantity of cow's milk collected by processing units from agricultural holdings and collection centres in the 1.I-30.IX.2017 period rose by 6.7% compared to the 1.I-30.IX.2016 period.

The quantity of milk collected by processing units and milk products obtained

	MU	September 2016	August 2017 ^{r)}	September 2017	1.I-30.IX. 2016	1.I-30.IX. 2017
Cow's milk collected by processing units	tonnes	75288	89851	83982	741745	791435
Average fat content	%	3.77	3.71	3.76	3.75	3.76
Average protein content	%	3.26	3.24	3.26	3.26	3.26
Imported raw milk	tonnes	10010	8400	9358	86213	90414
Milk products obtained						
Drinking milk	tonnes	22960	21803	22986	202457	208888
Cream	tonnes	5729	5383	5733	51659	48545
Acidified milk ^{*)}	tonnes	17160	18443	18208	150718	159142
Butter	tonnes	1045	924	913	8238	8841
Cheese products – total –	tonnes	6469	7828	7188	68880	70413
of which: exclusively from cow's milk	tonnes	5823	6537	6453	56635	59090

The data for the months of 2016 are final, and the ones for the months of 2017 are provisional.

^{r)} Rectified data

^{*)} It includes yogurt, drinking yogurt, curd and other similar milk products.

[The data of the table in xls format](#)

September 2017 compared to August 2017

The quantity of cow's milk collected by processing units in September 2017 fell by 5869 tonnes (-6.5%) compared to the previous month.

Decreases in production were recorded for cheese products, with 640 less tonnes produced (-8.2%) in September 2017 than in August 2017, acidified milk (yogurt, drinking yogurt, curd and other similar milk products), for which a 235 tonne fall (-1.3%) was reported, and butter, with 11 less tonnes produced (-1.2%).

The main milk products for which production increased were cream, for which a 350 tonne rise (+6.5%) was reported, and drinking milk, with 1183 more tonnes produced (+5.4%).

The quantity of imported raw milk increased by 958 tonnes (+11.4%) in September 2017 compared to August 2017.

September 2017 compared to September 2016

The quantity of cow's milk collected by processing units in September 2017 was up 8694 tonnes (+11.5%) from the same month of the previous year.

Increases in production were recorded for cheese products, with 719 more tonnes produced (+11.1%), acidified milk (yogurt, drinking yogurt, curd and other similar milk products), for which a 1048 tonne rise (+6.1%) was reported, drinking milk, with 26 more tonnes produced (+0.1%), and cream, for which a 4 tonne rise (+0.1%) was reported.

A decrease in production was recorded for butter, with 132 less tonnes produced (-12.6%).

The quantity of imported raw milk fell by 652 tonnes (-6.5%) in September 2017 compared to the same month of the previous year.

The 1.I-30.IX.2017 period compared to the 1.I-30.IX.2016 period

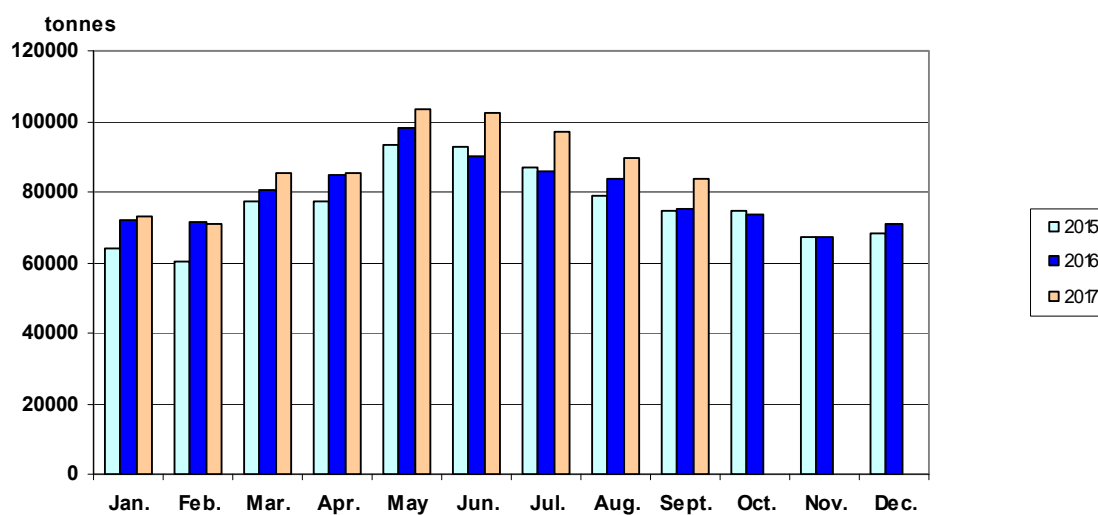
The quantity of cow's milk collected by processing units in the 1.I-30.IX.2017 period rose by 49690 tonnes (+6.7%) compared to the 1.I-30.IX.2016 period.

Increases in production were recorded for butter, for which a 603 tonne rise (+7.3%) was reported, acidified milk (yogurt, drinking yogurt, curd and other similar milk products), with 8424 more tonnes produced (+5.6%), drinking milk, for which a 6431 tonne rise (+3.2%) was reported, and cheese products, with 1533 more tonnes produced (+2.2%).

A decrease in production was recorded for cream, with 3114 less tonnes produced (-6.0%).

The quantity of imported raw milk was up 4201 tonnes (+4.9%) in the same period.

Evolution of the quantity of cow's milk collected by processing units



[The data of the graph in xls format](#)

Further information:

For an accurate interpretation of the indicators, please see the [Methodological explanations attached to the press release on the homepage](#).

The next press release will be issued on Friday, 8 December 2017.

Press release archive: <http://www.insse.ro/cms/en/comunicate-de-presa-view>

Communication Directorate

E-mail: birou presa@insse.ro

Tel: +4021 3181869