

Domain: Industry

## The quantity of cow's milk collected by processing units in August 2019

- The quantity of cow's milk collected by processing units from agricultural holdings and collection centres in August 2019 decreased by 8.7% compared to July 2019 and was down 3.7% from August 2018.
- The quantity of cow's milk collected by processing units from agricultural holdings and collection centres in the 1.I-31.VIII.2019 period rose by 2.2% compared to the 1.I-31.VIII.2018 period.

### The quantity of cow's milk collected by processing units and milk products obtained

	MU	August 2018	July <sup>1)</sup> 2019	August 2019	1.I-31.VIII. 2018 <sup>**)</sup>	1.I-31.VIII. 2019 <sup>**)</sup>
Cow's milk collected by processing units	tonnes	98552	103947	94953	764161	781104
Average fat content	%	3.72	3.72	3.73	3.77	3.79
Average protein content	%	3.24	3.24	3.25	3.26	3.27
Imported raw milk	tonnes	8413	6598	7849	84794	64999
<b>Milk products obtained</b>						
Drinking milk	tonnes	25123	26246	25397	200121	214555
Cream	tonnes	5736	5704	5395	43800	44860
Acidified milk <sup>*)</sup>	tonnes	19336	19889	18714	143367	151329
Butter	tonnes	733	737	771	6880	6778
Cheese products – total –	tonnes	8300	8807	8601	65924	67094
of which: exclusively from cow's milk	tonnes	6629	7026	7143	54534	56239

Provisional data

<sup>1)</sup> rectified data

<sup>\*)</sup> It includes yogurt, drinking yogurt, curd and other similar milk products.

<sup>\*\*)</sup> Due to rounding and the revision of the monthly data, the data related to the cumulated periods may differ from the ones resulting from summing up the months.

[The data of the table in xls format](#)

### August 2019 compared to July 2019

The quantity of cow's milk collected by processing units in August 2019 decreased by 8994 tonnes (-8.7%) compared to the previous month.

Decreases in production were recorded for the following milk products in August 2019 compared to July 2019: acidified milk (yogurt, drinking yogurt, curd and other similar milk products), with 1175 less tonnes produced (-5.9%), cream, for which a 309 tonne drop (-5.4%) was reported, drinking milk, with 849 less tonnes produced (-3.2%), and cheese products, for which a 206 tonne drop (-2.3%) was reported.

The production of butter increased by 34 tonnes (+4.6%).

The quantity of raw milk imported by processing units rose by 1251 tonnes (+19.0%) in August 2019 compared to the previous month.

### ***August 2019 compared to August 2018***

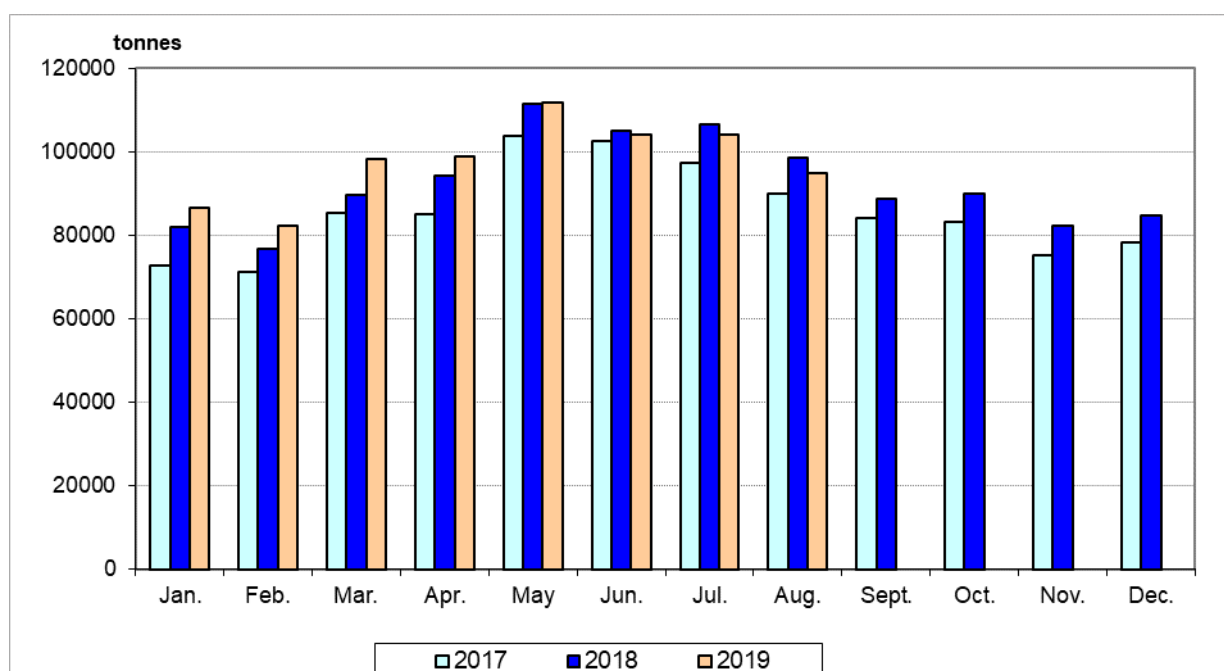
The quantity of cow's milk collected by processing units in August 2019 was down 3599 tonnes (-3.7%) from the same month of the previous year.

Decreases in production were recorded for cream, with 341 less tonnes produced (-5.9%), and acidified milk (yogurt, drinking yogurt, curd and other similar milk products), for which a 622 tonne drop (-3.2%) was reported.

Increases in production were recorded for butter, with 38 more tonnes produced (+5.2%), cheese products, for which a 301 tonne rise (+3.6%) was reported, and drinking milk, with 274 more tonnes produced (+1.1%).

The quantity of raw milk imported by processing units was down 564 tonnes (-6.7%) in August 2019 from the same month of the previous year.

**Evolution of the quantity of cow's milk collected by processing units**



[The data of the graph in xls format](#)

### ***The 1.I-31.VIII.2019 period compared to the 1.I-31.VIII.2018 period***

The quantity of cow's milk collected by processing units in the 1.I-31.VIII.2019 period rose by 16943 tonnes (+2.2%) compared to the 1.I-31.VIII.2018 period.

Increases in production were recorded for the following milk products: drinking milk, with 14434 more tonnes produced (+7.2%), acidified milk (yogurt, drinking yogurt, curd and other similar milk products), for which a 7962 tonne rise (+5.6%) was reported, cream, with 1060 more tonnes produced (+2.4%), and cheese products, with 1170 more tonnes produced (+1.8%).

The production of butter decreased by 102 tonnes (-1.5%).

The quantity of raw milk imported by processing units was down 19795 tonnes (-23.3%) in the 1.I-31.VIII.2019 period from the 1.I-31.VIII.2018 period.

#### Further information:

For an accurate interpretation of the indicators, please see the [Methodological explanations attached to the press release on the homepage](#).

For more information, see the Industry Statistical Bulletin (date of issue 18 October 2019).

The next press release will be issued on Monday, 11 November 2019.

Press release archive: <http://www.insse.ro/cms/en/comunicate-de-presa-view>

#### **Communication Directorate**

E-mail: [biroupresa@insse.ro](mailto:biroupresa@insse.ro)

Tel: +4021 3181869