



Domain: Industry

## The quantity of cow's milk collected by processing units in August 2016 up 5.5% from August 2015

- The quantity of cow's milk collected by processing units from agricultural holdings and collection centres in August 2016 decreased by 2.9% compared to July 2016 and was up 5.5% from August 2015.
- The quantity of cow's milk collected by processing units from agricultural holdings and collection centres in the 1.I-31.VIII.2016 period increased by 5.6% compared to the 1.I-31.VIII.2015 period.

### The quantity of milk collected by processing units and milk products obtained

	MU	August 2015	July 2016	August 2016	1.I-31.VIII. 2015	1.I-31.VIII. 2016
Cow's milk collected by processing units	tonnes	79116	85999	83504	631070	666458
Average fat content	%	3.67	3.70	3.72	3.73	3.75
Average protein content	%	3.23	3.24	3.24	3.25	3.26
Imported raw milk	tonnes	6475	6245	7285	55488	76201
<b>Milk products obtained</b>						
Drinking milk	tonnes	19395	19224	20217	168215	179497
Cream	tonnes	5637	5463	5921	43124	45931
Acidified milk*)	tonnes	16713	18258	16886	127135	133559
Butter	tonnes	763	787	890	6762	7194
Cheese products – total –	tonnes	7051	7836	7106	57009	62410
of which: cheese obtained exclusively from cow's milk	tonnes	5917	6033	6114	46715	50812

The data for 2015 are final, and the ones for 2016 are provisional.

\*) It includes yogurt, drinking yogurt, curd and other similar milk products.

[The data of the table in xls format](#)

### ***August 2016 compared to July 2016***

The quantity of cow's milk collected by processing units in August 2016 decreased by 2495 tonnes (-2.9%) compared to the previous month.

Decreases in production were recorded for cheese products, with 730 less tonnes produced (-9.3%) in August 2016 than the previous month, and acidified milk (yogurt, drinking yogurt, curd and other similar milk products), for which a 1372 tonne drop (-7.5%) was reported.

Increases in production in August 2016 compared to the previous month were recorded for butter, with 103 more tonnes produced (+13.1%), cream, for which a 458 tonne rise (+8.4%) was reported, and drinking milk, with 993 more tonnes produced (+5.2%).

The quantity of imported raw milk increased by 1040 tonnes (+16.7%) in August 2016 compared to July 2016.

### ***August 2016 compared to August 2015***

The quantity of cow's milk collected by processing units in August 2016 was up 4388 tonnes (+5.5%) from the same month of the previous year.

Increases in production were recorded for butter, with 127 more tonnes produced (+16.6%) in August 2016 than in August 2015, cream, for which a 284 tonne rise (+5.0%) was reported, drinking milk, with 822 more tonnes produced (+4.2%), acidified milk (yogurt, drinking yogurt, curd and other similar milk products), for which a 173 tonne rise (+1.0%) was reported, and cheese products, with 55 more tonnes produced (+0.8%).

The quantity of imported raw milk increased by 810 tonnes (+12.5%) in August 2016 compared to the same month of the previous year.

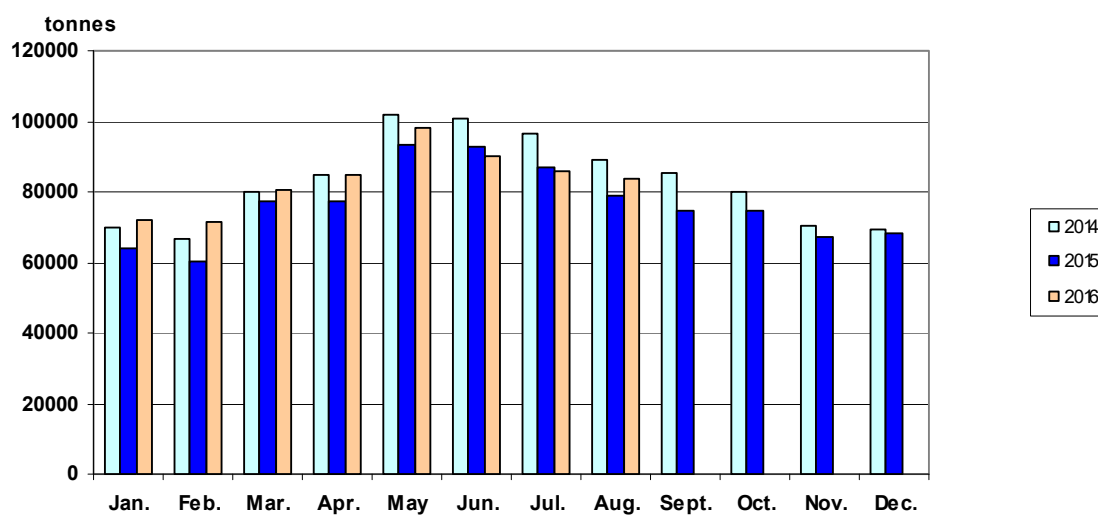
### ***The 1.I-31.VIII.2016 period compared to the 1.I-31.VIII.2015 period***

The quantity of cow's milk collected by processing units in the 1.I-31.VIII.2016 period rose by 35388 tonnes (+5.6%) compared to the 1.I-31.VIII.2015 period.

Increases in production were recorded for cheese products, for which a 5401 tonne rise (+9.5%) was reported in the 1.I-31.VIII.2016 period compared to the 1.I-31.VIII.2015 period, drinking milk, with 11282 more tonnes produced (+6.7%), cream, for which a 2807 tonne rise (+6.5%) was reported, butter, with 432 more tonnes produced (+6.4%), and acidified milk (yogurt, drinking yogurt and other similar milk products), with 6424 more tonnes produced (+5.1%).

The quantity of imported raw milk was up 20713 tonnes (+37.3%) in the 1.I-31.VIII.2016 period from the 1.I-31.VIII.2015 period.

## Evolution of the quantity of cow's milk collected by processing units



[The data of the graph in xls format](#)

### Further information:

For an accurate interpretation of the indicators, please see the [Methodological explanations attached to the press release on the homepage](#).

The next press release will be issued on Wednesday, 9 November 2016.

Press release archive: <http://www.insse.ro/cms/en/comunicate-de-presa-view>

### Communication Directorate

E-mail: [birou presa@insse.ro](mailto:birou presa@insse.ro)

Tel: +4021 3181869