



Domain: Industry

The quantity of cow's milk collected by processing units in July 2017 up 13.1% from July 2016

- The quantity of cow's milk collected by processing units from agricultural holdings and collection centres in July 2017 decreased by 5.0% compared to June 2017 and was up 13.1% from July 2016.
- The quantity of cow's milk collected by processing units from agricultural holdings and collection centres in the 1.I-31.VII.2017 period rose by 5.9% compared to the 1.I-31.VII.2016 period.

The quantity of milk collected by processing units and milk products obtained

	MU	July 2016	June 2017 ^{r)}	July 2017	1.I-31.VII. 2016	1.I-31.VII. 2017
Cow's milk collected by processing units	tonnes	85999	102440	97295	582953	617602
Average fat content	%	3.70	3.72	3.70	3.76	3.77
Average protein content	%	3.24	3.25	3.24	3.26	3.26
Imported raw milk	tonnes	6245	6348	5598	68917	72656
Milk products obtained						
Drinking milk	tonnes	19224	22053	18989	159280	164099
Cream	tonnes	5463	5139	5504	40009	37428
Acidified milk ^{*)}	tonnes	18258	17246	18151	116673	122491
Butter	tonnes	787	846	841	6304	6991
Cheese products – total –	tonnes	7836	8931	8567	55304	55396
of which: exclusively from cow's milk	tonnes	6033	6829	6880	44697	46102

The data for the months of 2016 are final, and the ones for the months of 2017 are provisional.

^{r)} Rectified data

^{*)} It includes yogurt, drinking yogurt, curd and other similar milk products.

[The data of the table in xls format](#)

July 2017 compared to June 2017

The quantity of cow's milk collected by processing units in July 2017 fell by 5145 tonnes (-5.0%) compared to the previous month.

Decreases in production were recorded for drinking milk, with 3064 less tonnes produced (-13.9%) in July 2017 than in June 2017, cheese products, for which a 364 tonne fall (-4.1%) was reported, and butter, with 5 less tonnes produced (-0.6%).

The main milk products for which production increased were cream, with 365 more tonnes produced (+7.1%), and acidified milk (yogurt, drinking yogurt, curd and other similar milk products), for which a 905 tonne rise (+5.2%) was reported.

The quantity of imported raw milk decreased by 750 tonnes (-11.8%) in July 2017 compared to June 2017.

July 2017 compared to July 2016

The quantity of cow's milk collected by processing units in July 2017 was up 11296 tonnes (+13.1%) from the same month of the previous year.

Increases in production were recorded for cheese products, with 731 more tonnes produced (+9.3%), butter, for which a 54 tonne rise (+6.9%) was reported, and cream, with 41 more tonnes produced (+0.8%).

Decreases in production were recorded for drinking milk, for which a 235 tonne drop (-1.2%) was reported, and acidified milk (yogurt, drinking yogurt, curd and other similar milk products), with 107 less tonnes produced (-0.6%).

The quantity of imported raw milk fell by 647 tonnes (-10.4%) in July 2017 compared to the same month of the previous year.

The 1.I-31.VII.2017 period compared to the 1.I-31.VII.2016 period

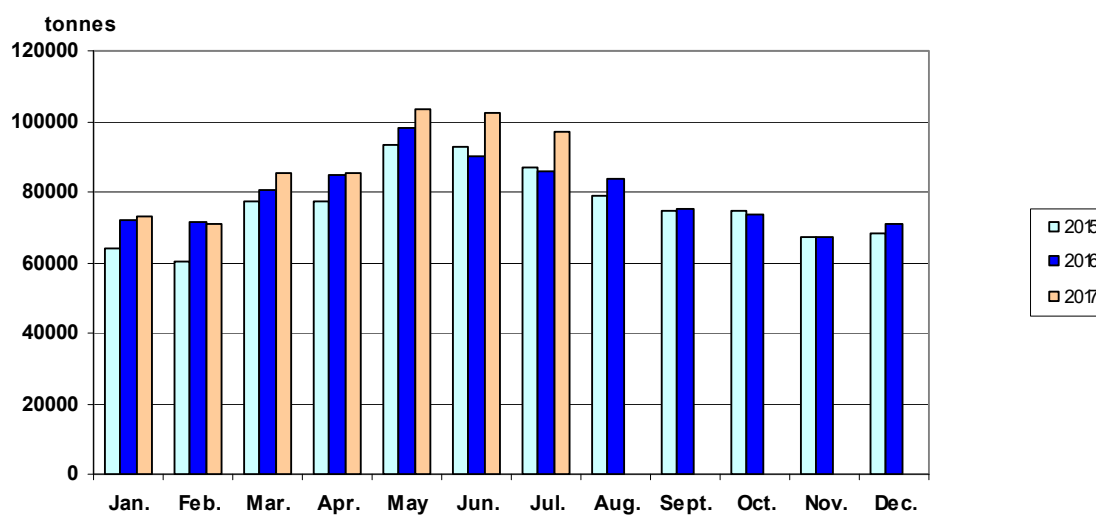
The quantity of cow's milk collected by processing units in the 1.I-31.VII.2017 period rose by 34649 tonnes (+5.9%) compared to the 1.I-31.VII.2016 period.

Increases in production were recorded for butter, for which a 687 tonne rise (+10.9%) was reported, acidified milk (yogurt, drinking yogurt, curd and other similar milk products), with 5818 more tonnes produced (+5.0%), drinking milk, for which a 4819 tonne rise (+3.0%) was reported, and cheese products, with 92 more tonnes produced (+0.2%).

A decrease in production was recorded for cream, for which a 2581 tonne drop (-6.5%) was reported.

The quantity of imported raw milk was up 3739 tonnes (+5.4%) in the same period.

Evolution of the quantity of cow's milk collected by processing units



[The data of the graph in xls format](#)

Further information:

For an accurate interpretation of the indicators, please see the [Methodological explanations attached to the press release on the homepage](#).

The next press release will be issued on Wednesday, 11 October 2017.

Press release archive: <http://www.insse.ro/cms/en/comunicate-de-presa-view>

Communication Directorate

E-mail: birou presa@insse.ro

Tel: +4021 3181869