

Domain: Industry

INDUSTRIAL PRODUCTION UP 1.7% IN THE YEAR 2016

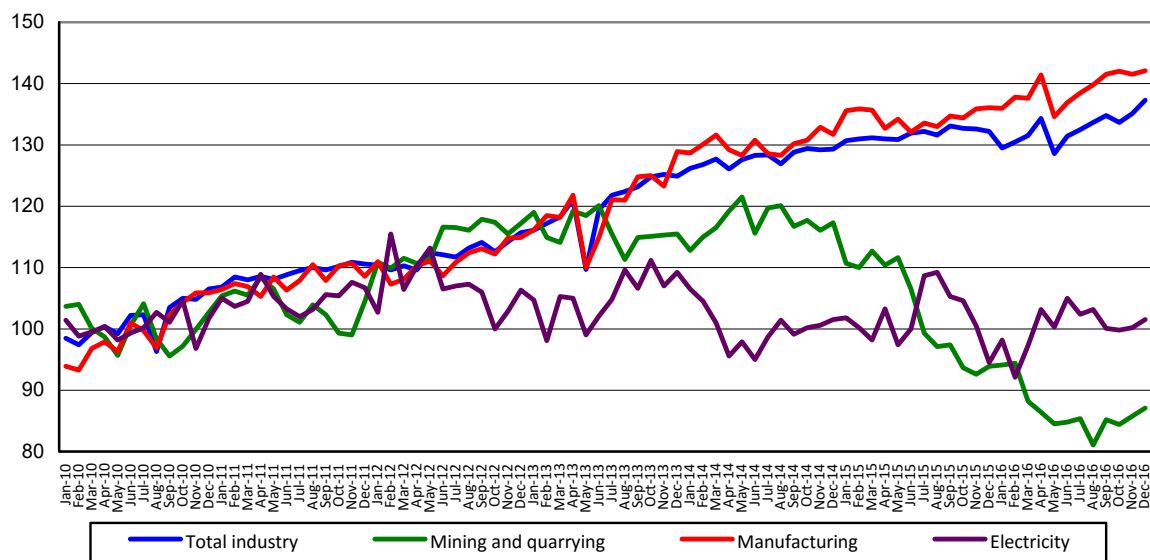
- In **December 2016**, industrial production decreased by 13.3% as gross series **compared to the previous month** and was up 1.6% as series adjusted by number of working days and seasonality.
- **Compared to the same month of the previous year**, industrial production rose by 3.6% as gross series and was up 3.9% as series adjusted by number of working days and seasonality.
- In **the year 2016**, industrial production increased by 1.7% as gross series compared to the year 2015.

Monthly evolution of industrial production

- January 2010-December 2016 -

- series adjusted by number of working days and seasonality -

2010=100



The data of the graph in xls format

In **December 2016**, industrial production (**the gross series**) decreased by 13.3% **compared to the previous month** due to the fall in manufacturing (-15.6%). The electricity, gas, steam and air conditioning supply was up 8.2%, and mining and quarrying rose by 1.7%.

Industrial production (**the series adjusted by number of working days and seasonality**) was up 1.6% **from the previous month** due to increases in the three industrial sectors: mining and quarrying (+1.4%), the electricity, gas, steam and air conditioning supply (+1.3%) and manufacturing (+0.4%).

Compared to the same month of the previous year, industrial production (**the gross series**) increased by 3.6% due to rises in the electricity, gas, steam and air conditioning supply (+6.7%) and manufacturing (+3.7%). Mining and quarrying dropped 8.3%.

Industrial production (**the series adjusted by number of working days and seasonality**) rose by 3.9% due to increases in the electricity, gas, steam and air conditioning supply (+7.4%) and manufacturing (+4.3%). Mining and quarrying fell by 7.3%.

In **the year 2016**, industrial production (**the gross series**) was up 1.7% from the year 2015 due to the rise in manufacturing (+2.6%). Drops were recorded for mining and quarrying (-15.8%) and the electricity, gas, steam and air conditioning supply (-1.1%).

Industrial Production Indices, for the total and by section of industry

- percentages -

Industrial Production Index – IPI		December 2016 compared to:		The year 2016/ The year 2015
		November 2016	December 2015	
TOTAL	G	86.7	103.6	101.7
	S	101.6	103.9	-
Mining and quarrying	G	101.7	91.7	84.2
	S	101.4	92.7	-
Manufacturing	G	84.4	103.7	102.6
	S	100.4	104.3	-
Electricity	G	108.2	106.7	98.9
	S	101.3	107.4	-

G = gross series; S = series adjusted by number of working days and seasonality

[The data of the table in xls format](#)

Additional information:

For an accurate interpretation of the indicators, please see the [Methodological explanations attached to the press release on the homepage](#).

For more information, see the Monthly Statistical Bulletin (date of issue 27 February 2017) and the Industry Statistical Bulletin (date of issue 20 February 2017), as well as the TEMPO online database of the NIS (the data for December 2016 will be available as of 10 February 2017).

Comparative data at EU level can be obtained from the Eurostat press release which comes out on Tuesday, 14 February 2017, and which can be accessed at the following address: <http://ec.europa.eu/eurostat/web/main>.

The next press release on industrial production indices will be issued on Monday, 13 March 2017.

Press release archive: <http://www.insse.ro/cms/en/comunicate-de-presa-view>

Communication Directorate

E-mail: birou presa@insse.ro

Tel: +4021 3181869