

Domain: Industry

## INDUSTRIAL PRODUCTION UP 3.3% IN SEPTEMBER 2016 FROM SEPTEMBER 2015

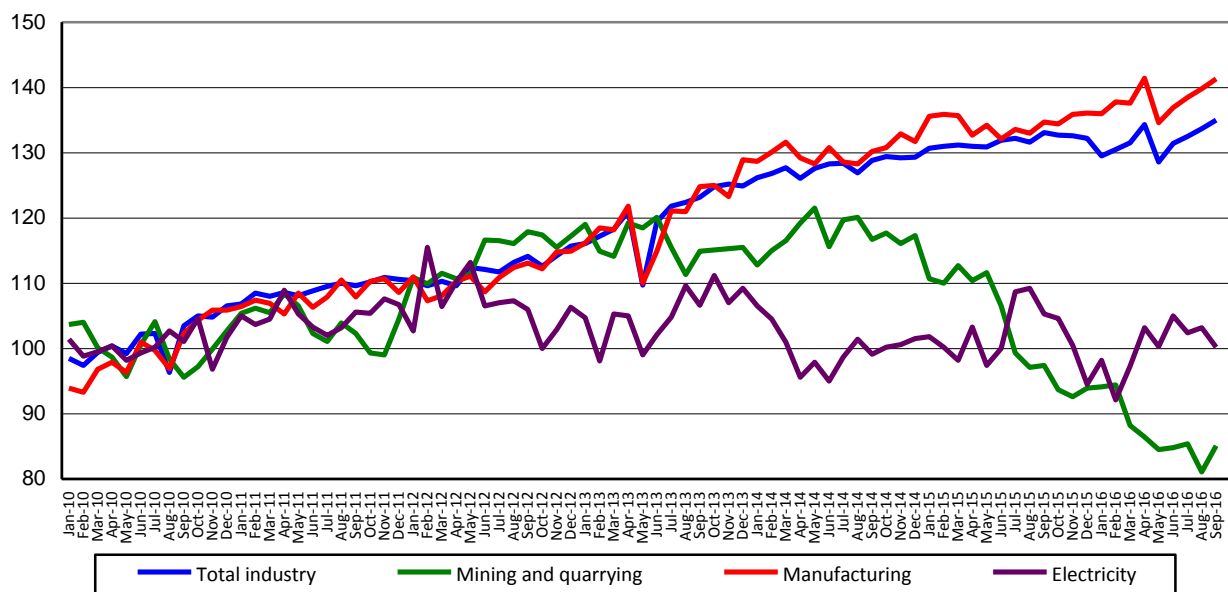
- In **September 2016**, industrial production increased by 23.0% as gross series **compared to the previous month** and was up 1.0% as series adjusted by number of working days and seasonality.
- **Compared to the same month of the previous year**, industrial production increased by 3.3% as gross series and was up 1.4% as series adjusted by number of working days and seasonality.
- In the **1.I-30.IX.2016 period**, industrial production rose by 1.4% as gross series compared to the 1.I-30.IX.2015 period and, as series adjusted by number of working days and seasonality, increased by 0.3%.

### Monthly evolution of industrial production

- January 2010-September 2016 -

- series adjusted by number of working days and seasonality -

2010=100



[The data of the graph in xls format](#)

In **September 2016**, industrial production (**the gross series**) increased by 23.0% **compared to the previous month** due to rises in manufacturing (+26.5%) and mining and quarrying (+6.0%). The electricity, gas, steam and air conditioning supply was down 6.1%.

Industrial production (**the series adjusted by number of working days and seasonality**) was up 1.0% from the previous month due to the increases reported for mining and quarrying (+4.9%) and manufacturing (+1.0%). A 3.0% drop was recorded for the electricity, gas, steam and air conditioning supply.

**Compared to the same month of the previous year**, industrial production (**the gross series**) increased by 3.3% due to the rise in manufacturing (+4.5%). Drops were recorded for mining and quarrying (-14.0%) and the electricity, gas, steam and air conditioning supply (-4.2%).

Industrial production (**the series adjusted by number of working days and seasonality**) rose by 1.4%. Manufacturing was up 4.9%, while mining and quarrying fell by 12.6%, and the electricity, gas, steam and air conditioning supply was down 4.9%.

In **the 1.I-30.IX.2016 period**, industrial production (**the gross series**) was up 1.4% from the 1.I-30.IX.2015 period due to the rise in manufacturing (+2.3%). Drops were recorded for mining and quarrying (-18.1%) and the electricity, gas, steam and air conditioning supply (-1.9%).

Industrial production (**the series adjusted by number of working days and seasonality**) in the 1.I-30.IX.2016 period rose by 0.3% compared to the 1.I-30.IX.2015 period due to the increase reported for manufacturing (+3.0%). Mining and quarrying fell by 18.0%, and the electricity, gas, steam and air conditioning supply was down 2.4%.

### Industrial Production Indices, for the total and by section of industry

- percentages -

Industrial Production Index – IPI		September 2016 compared to:		1.I-30.IX.2016/ 1.I-30.IX.2015
		August 2016	September 2015	
<b>TOTAL</b>	<b>G</b>	123.0	103.3	101.4
	<b>S</b>	101.0	101.4	100.3
<b>Mining and quarrying</b>	<b>G</b>	106.0	86.0	81.9
	<b>S</b>	104.9	87.4	82.0
<b>Manufacturing</b>	<b>G</b>	126.5	104.5	102.3
	<b>S</b>	101.0	104.9	103.0
<b>Electricity</b>	<b>G</b>	93.9	95.8	98.1
	<b>S</b>	97.0	95.1	97.6

B = gross series; S = series adjusted by number of working days and seasonality

[The data of the table in xls format](#)

#### Additional information:

For an accurate interpretation of the indicators, please see the [Methodological explanations attached to the press release on the homepage](#).

For more information, see the Monthly Statistical Bulletin (date of issue 25 November 2016) and the Industry Statistical Bulletin (date of issue 18 November 2016), as well as the TEMPO online database of the NIS (the data for September 2016 will be available as of 14 November 2016).

Comparative data at EU level can be obtained from the Eurostat press release which comes out on Monday, 14 November 2016, and which can be accessed at the following address:

<http://ec.europa.eu/eurostat/web/main>.

The next press release on industrial production indices will be issued on Wednesday, 14 December 2016.

Press release archive: <http://www.insse.ro/cms/en/comunicate-de-presa-view>

#### Communication Directorate

E-mail: [biroupresa@insse.ro](mailto:biroupresa@insse.ro)

Tel: +4021 3181869