

Domain: Industry

INDUSTRIAL PRODUCTION UP 2.9% IN MARCH 2016 FROM MARCH 2015

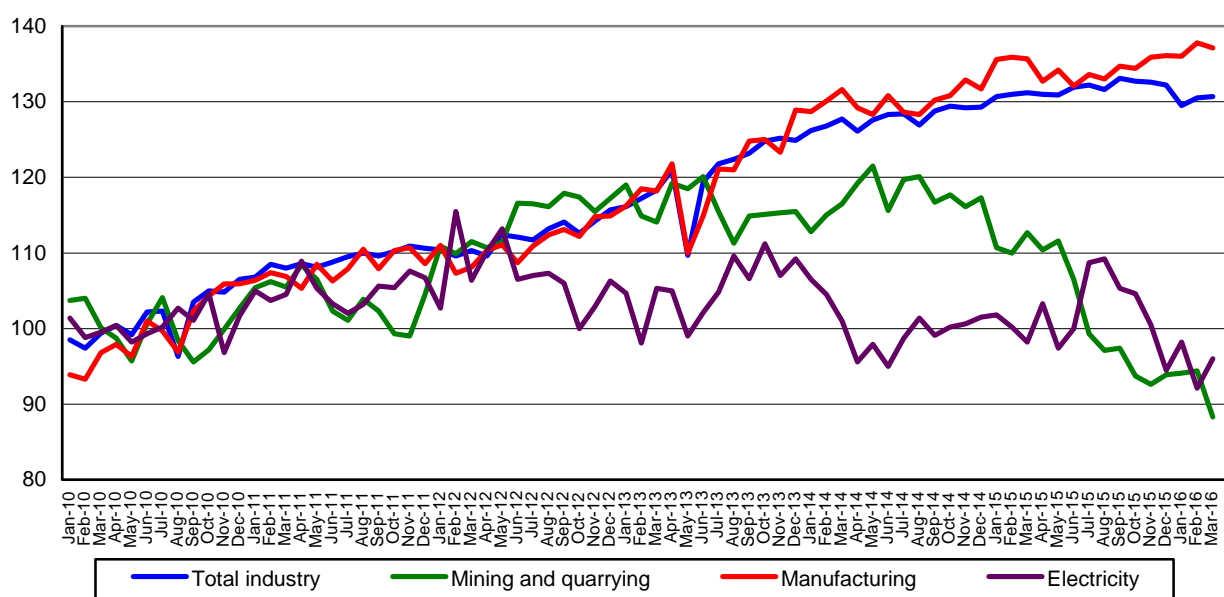
- In **March 2016**, industrial production rose **compared to the previous month**, both as gross series (+10.3%) and as series adjusted by number of working days and seasonality (+0.1%).
- **Compared to the same month of the previous year**, industrial production increased by 2.9% as gross series and was down 0.4% as series adjusted by number of working days and seasonality.
- **In the first quarter of 2016**, industrial production rose by 0.6% compared to the first quarter of 2015 and dropped 0.5% as series adjusted by number of working days and seasonality.

Monthly evolution of industrial production

- January 2010-March 2016 -

- series adjusted by number of working days and seasonality -

2010=100



[The data of the graph in xls format](#)

In March 2016, industrial production (**the gross series**) increased by 10.3% **compared to the previous month** due to rises in all industrial sectors: manufacturing (+11.1%), mining and quarrying (+7.9%) and the electricity, gas, steam and air conditioning supply (+2.3%).

Industrial production (**the series adjusted by number of working days and seasonality**) was up 0.1% from the previous month due to the rise reported for the electricity, gas, steam and air conditioning supply (+4.3%). Mining and quarrying dropped 6.4% and manufacturing was down 0.5%.

Compared to the same month of the previous year, industrial production (**the gross series**) increased by 2.9% due to the rise reported for manufacturing (+4.3%). Drops were recorded for mining and quarrying (-22.3%) and the electricity, gas, steam and air conditioning supply (-1.9%).

Industrial production (**the series adjusted by number of working days and seasonality**) was down 0.4% due to decreases in mining and quarrying (-21.6%) and the electricity, gas, steam and air conditioning supply (-2.2%). Manufacturing rose by 1.0%.

In the first quarter of 2016, industrial production (**the gross series**) increased by 0.6% due to the rise in manufacturing (+1.8%). Decreases were reported for mining and quarrying (-17.4%) and the electricity, gas, steam and air conditioning supply (-3.9%).

Industrial production (**the series adjusted by number of working days and seasonality**) in the first quarter of 2016 was down 0.5% from the first quarter of 2015 due to drops in mining and quarrying (-17.0%) and the electricity, gas, steam and air conditioning supply (-4.6%). Manufacturing was up 0.9%.

Industrial Production Indices, for the total and by section of industry

- percentages -

| Industrial Production Index – IPI | | March 2016 compared to: | | Quarter I 2016/ quarter I 2015 |
|-----------------------------------|----------|----------------------------|------------|-----------------------------------|
| | | February 2016 | March 2015 | |
| TOTAL | G | 110.3 | 102.9 | 100.6 |
| | S | 100.1 | 99.6 | 99.5 |
| Mining and quarrying | G | 107.9 | 77.7 | 82.6 |
| | S | 93.6 | 78.4 | 83.0 |
| Manufacturing | G | 111.1 | 104.3 | 101.8 |
| | S | 99.5 | 101.0 | 100.9 |
| Electricity | G | 102.3 | 98.1 | 96.1 |
| | S | 104.3 | 97.8 | 95.4 |

G = gross series; S = series adjusted by number of working days and seasonality

[The data of the table in xls format](#)

Additional information:

For an accurate interpretation of the indicators, please see the [Methodological explanations attached to the press release on the homepage](#).

For more information, see the Monthly Statistical Bulletin (date of issue 27 May 2016) and the Industry Statistical Bulletin (date of issue 23 May 2016), as well as the TEMPO online database of the NIS (the data for March 2016 will be available as of 13 May 2016).

Comparative data at EU level can be obtained from the Eurostat press release which comes out on Thursday, 12 May 2016, and which can be accessed at the following address:

<http://ec.europa.eu/eurostat/web/main>.

The next press release on industrial production indices will be issued on Tuesday, 14 June 2016.

Press release archive: <http://www.insse.ro/cms/en/comunicate-de-presa-view>

Communication Department

E-mail: birou presa@insse.ro

Tel: +4021 3181869