

Domain: Industry

INDUSTRIAL PRODUCTION DOWN 2.0% IN JANUARY 2016 FROM JANUARY 2015

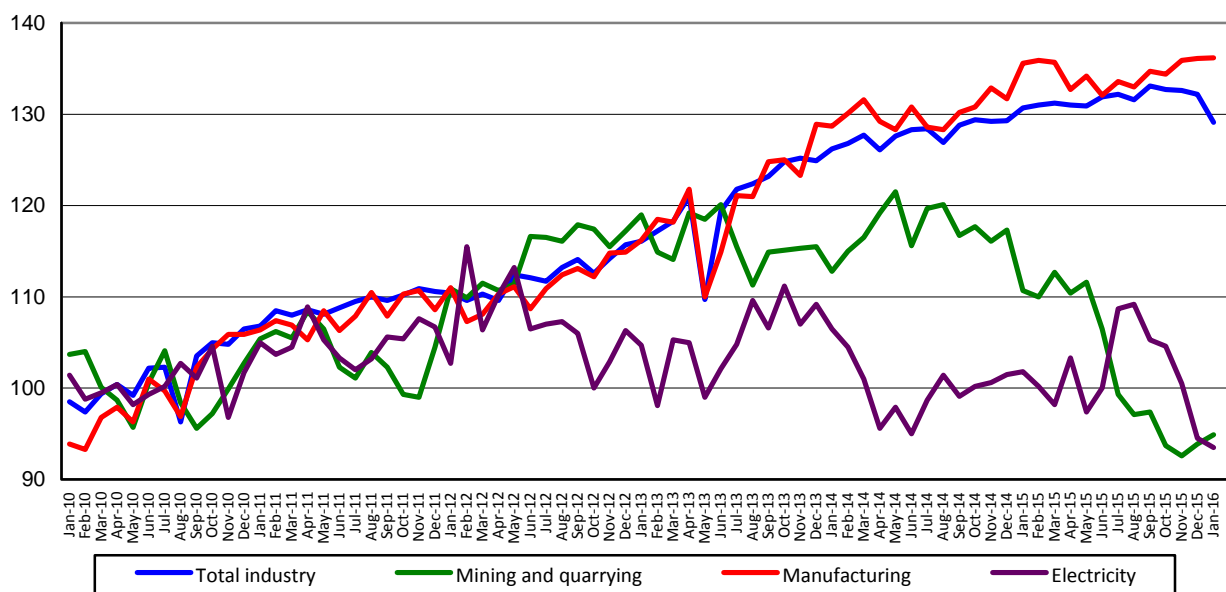
- In **January 2016**, industrial production fell **compared to the previous month**, both as gross series (-1.3%) and as series adjusted by number of working days and seasonality (-2.3%).
- **Compared to the same month of the previous year**, industrial production decreased by 2.0% as gross series and was down 1.2% as series adjusted by number of working days and seasonality.

Monthly evolution of industrial production

- January 2010-January 2016 -

- series adjusted by number of working days and seasonality -

2010=100



[The data of the graph in xls format](#)

In **January 2016**, industrial production (**the gross series**) decreased by 1.3% **compared to the previous month** due to falls in the three industrial sectors: mining and quarrying (-7.4%), the electricity, gas, steam and air conditioning supply (-1.7%) and manufacturing (-1.1%).

Industrial production (**the series adjusted by number of working days and seasonality**) was down 2.3% from the previous month. A 1.0% decrease was recorded for the electricity, gas, steam and air conditioning supply. Rises were reported for mining and quarrying (+1.1%) and manufacturing (+0.1%).

Compared to the same month of the previous year, industrial production (**the gross series**) decreased by 2.0% due to the falls reported for mining and quarrying (-11.2%), the electricity, gas, steam and air conditioning supply (-8.9%) and manufacturing (-0.8%).

Industrial production (**the series adjusted by number of working days and seasonality**) was down 1.2% due to drops in mining and quarrying (-14.2%) and the electricity, gas, steam and air conditioning supply (-8.1%). A 0.5% rise was reported for manufacturing.

Industrial Production Indices, for the total and by section of industry

- percentages -

Industrial Production Index – IPI		January 2016 compared to:	
		December 2015	January 2015
TOTAL	G	98.7	98.0
	S	97.7	98.8
Mining and quarrying	G	92.6	88.8
	S	101.1	85.8
Manufacturing	G	98.9	99.2
	S	100.1	100.5
Electricity	G	98.3	91.1
	S	99.0	91.9

G = gross series; S = series adjusted by number of working days and seasonality

[The data of the table in xls format](#)

Additional information:

For an accurate interpretation of the indicators, please see the [Methodological explanations attached to the press release on the homepage](#).

For more information, see the Monthly Statistical Bulletin (date of issue 28 March 2016) and the Industry Statistical Bulletin (date of issue 21 March 2016), as well as the TEMPO online database of the NIS (the data for January 2016 will be available as of 15 March 2016).

Comparative data at EU level can be obtained from the Eurostat press release which comes out on Monday, 14 March 2016, and which can be accessed at the following address: <http://ec.europa.eu/eurostat/web/main>.

The next press release on industrial production indices will be issued on Tuesday, 12 April 2016.

Press release archive: <http://www.insse.ro/cms/en/comunicate-de-presa-view>

Communication Department

E-mail: birou presa@insse.ro

Tel: +4021 3181869