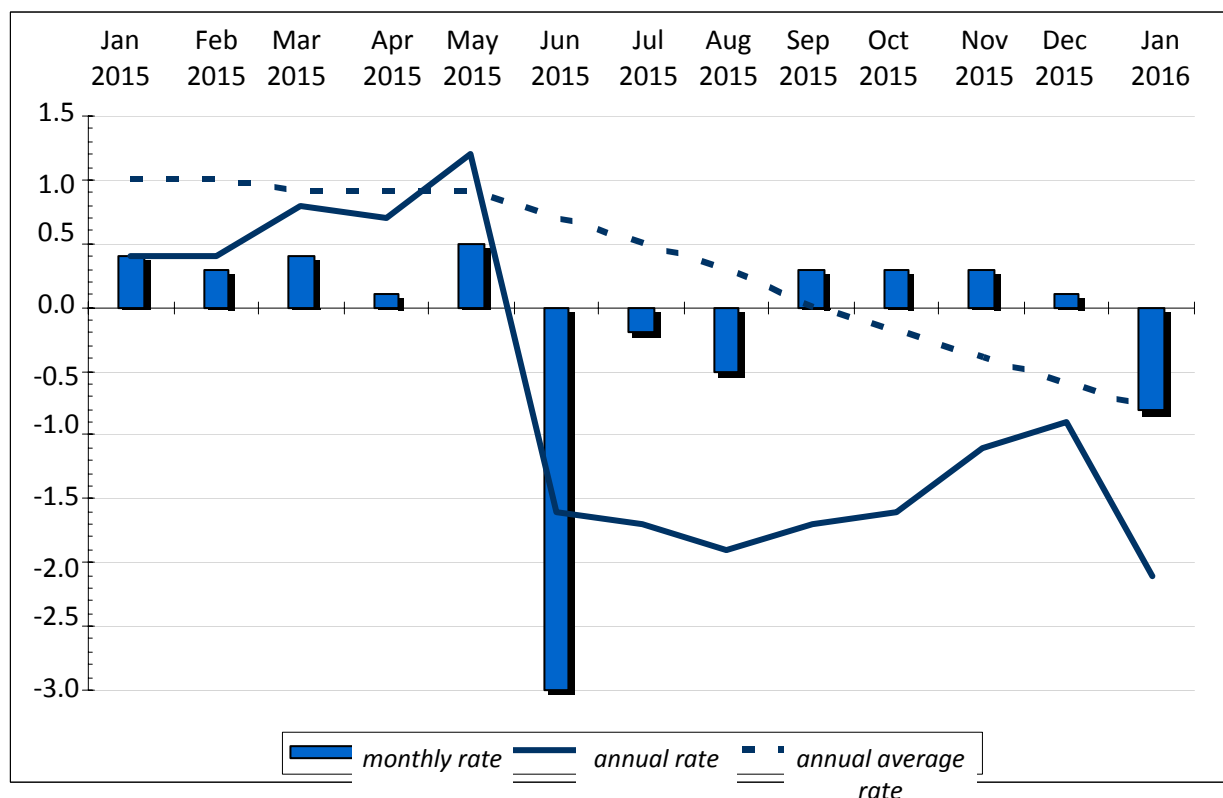


Domain: Consumer prices

IN JANUARY 2016, THE ANNUAL RATE OF CONSUMER PRICES WAS -2.1%

- Consumer prices were lower (-2.1%) in January 2016 than in January 2015.
- In January 2016, the weight of the goods and services for which a price fall was observed compared to January 2015 was 53.3%; the goods and services whose prices increased within a range of 0-2.5% had a weight of 28.9%. The goods and services whose prices grew by more than 2.5% had a weight of 17.8%.
- The average price increase based on the CPI over the last 12 months (February 2015-January 2016) as compared to the previous 12 months (February 2014-January 2015) was -0.8%.

Graph: Monthly, annual and annual average rates of the Consumer Price Index (%)



The data of the graph (xls) can be accessed through the .rar file attached to the press release on the homepage.

Table 1: The Consumer Price Index and the monthly inflation rate

– percentages –

	January 2016 compared to:		Monthly inflation rate over the period 1 I-31 I	
	December 2015	January 2015	2016	2015
Food goods	100.47	93.71	0.5	0.6
Non-food goods	98.44	100.12	-1.6	0.2
Services	98.88	100.65	-1.1	0.6
ALL ITEMS	99.22	97.87	-0.8	0.4

The data of the table (xls) can be accessed through the .rar file attached to the press release on the homepage.

Consumer prices dropped 6.3% for food goods in January 2016 compared to January 2015.

Table 2: Partial indices calculated by excluding certain items from the CPI

previous month=100

	January 2016 %
All-items CPI excluding alcoholic beverages and tobacco	99.18
All-items CPI excluding fuels	99.40
All-items CPI excluding products whose prices are regulated*)	99.71
All-items CPI excluding vegetables, fruit**), eggs, fuels and products whose prices are regulated*)	99.78
All-items CPI excluding vegetables, fruit**), eggs, fuels and products whose prices are regulated*), beverages and tobacco	99.78
ALL ITEMS	99.22

*) Products whose prices are regulated: medicines, electric energy, natural gas, heat energy, rail transport, water transport, mail and courier, radio-TV subscription, issuance of identity cards, driving licences, passports, water, sewerage, sanitation, urban public transport, rents set by local administration

**) In order to more accurately meet the need to analyse inflation, as of September 2014 the fruit group includes, besides fresh fruit, citrus and other exotic fruit.

The data of the table (xls) can be accessed through the .rar file attached to the press release on the homepage.

Additional information:

For an accurate interpretation of the indicators, please see the [Methodological explanations attached to the press release on the homepage](#).

The weighting coefficients and the January 2016 Consumer Price Indices for the main food goods, non-food goods and services are presented in the annex. [The data presented in the annex \(xls\) can be accessed through the .rar file attached to the press release on the homepage](#).

For the calculation of the CPI in 2016, the weighting coefficients are determined based on the data from the Family Budget Survey for 2014.

The next press release on consumer prices will be issued on 11 March 2016.

Press release archive: <http://www.insse.ro/cms/ro/content/comunicate-de-presa-arhiva>

Communication Department

E-mail: birou presa@insse.ro

Tel: +4021 3181869

**THE CONSUMER PRICE INDEX FOR THE MAIN GOODS AND SERVICES
IN JANUARY 2016**

Weighting coefficient	Name of goods/services	Jan-2016 compared to: Dec-2015 %
10000	ALL ITEMS	99.22
3600	TOTAL FOOD GOODS	100.47
678	Milling and bakery products	100.09
42	- Milling products	99.91
25	- Flour	99.91
17	- Maize flour	99.91
545	- Bread, loaf products and specialties	100.07
465	- Bread	100.06
21	- Loaf products	100.05
32	- Bakery specialties	100.05
354	Vegetables and tinned vegetables	103.07
30	- Beans and other leguminous plants	99.93
65	- Potatoes	103.90
195	- Other vegetables and tinned vegetables	103.10
230	Fruit and tinned fruit	101.90
118	- Fresh fruit	102.34
107	- Citrus and other exotic fruit	101.41
5	- Tinned fruit	100.23
121	Oil, lard, fats	101.10
99	- Edible oil	101.34
20	- Margarine	99.98
893	Meat, meat products and tinned meat	99.99
75	- Beef	100.09
235	- Pork	99.89
240	- Poultry	99.92
278	- Meat products	100.13
18	- Tinned meat	99.88
134	Fish and tinned fish	100.20
92	- Fresh fish	100.22
9	- Tinned fish and other fish products	100.00
555	Milk and dairy products	100.22
263	- Milk – total	100.19
194	- Cow's milk	100.18
138	- Cheese – total	100.35
77	- Cow's feta cheese	100.25
55	- Sheep's feta cheese	100.48
24	- Butter	100.21
62	Eggs	98.72
160	Sugar, confectioneries and honey	100.26
57	- Sugar	100.45
20	- Honey	100.00
108	Cocoa and coffee	99.89
104	- Coffee	99.87
116	Alcoholic beverages	98.43
27	- Wine	98.16
19	- Brandy, plum brandy and other beverages	97.95
69	- Beer	98.67
189	Other food products	100.08

Weighting coefficient	Name of goods/services	Jan-2016 compared to: Dec-2015 %
4425	TOTAL NON-FOOD GOODS	98.44
355	Clothing, hosiery, trimmings, haberdashery	99.26
1	- Fabrics	99.61
253	- Wearing apparel	99.26
77	- Knitwear	99.20
12	- Hosiery, trimmings, haberdashery	99.64
261	Footwear	99.00
158	- Leather footwear	98.87
146	Household products, furniture	99.24
26	- Furniture	99.19
10	- Refrigerators and freezers	99.25
12	- Washing machines	99.44
7	- Gas stoves, gas cylinders	99.06
27	- Household articles	99.10
262	Chemicals	98.32
5	- Varnishes and paints	99.05
165	- Detergents	97.96
2	- Domestic soap	98.44
237	Cultural and sporting products	99.93
113	- Books, newspapers, magazines	101.08
67	- Watches, audio and video devices, sporting goods	98.86
57	- Cars and spare parts	98.89
665	Hygiene articles, cosmetics and medical goods	99.35
261	- Hygiene articles, cosmetics	98.33
404	- Medical goods	100.05
387	- Medicines	100.08
814	Fuels	96.93
610	Tobacco, cigarettes	100.00
1021	Electric energy, gas and central heating	97.10
594	- Electric energy	97.06
325	- Gas	96.77
102	- Heat energy	98.52
54	Other non-food goods	99.31
1975	TOTAL SERVICES	98.88
18	Making and repairing of clothing and footwear	100.09
123	Rent	100.02
315	Water, sewerage, sanitation	93.10
257	Cinemas, theatres, museums, expenditure on education and tourism	99.99
24	Car and electronic repairs, photo works	100.16
112	Medical care	100.38
53	Hygiene and cosmetics	100.02
87	Urban transport	99.47
95	Interurban transport (other transport types)	99.69
8	- Rail	96.81
10	- Road	99.75
55	- Bus – subscriptions	99.98
5	- Air	100.57
637	Post and telecommunications	100.08
3	- Mail services	99.71
442	- Phone	100.52
192	- Radio-TV subscription	99.11
120	Restaurants, coffee shops, canteens	100.01
19	Other industrial-type services	99.92
115	Other services	100.11
2	- Payment for accommodation in hotel units	100.13