

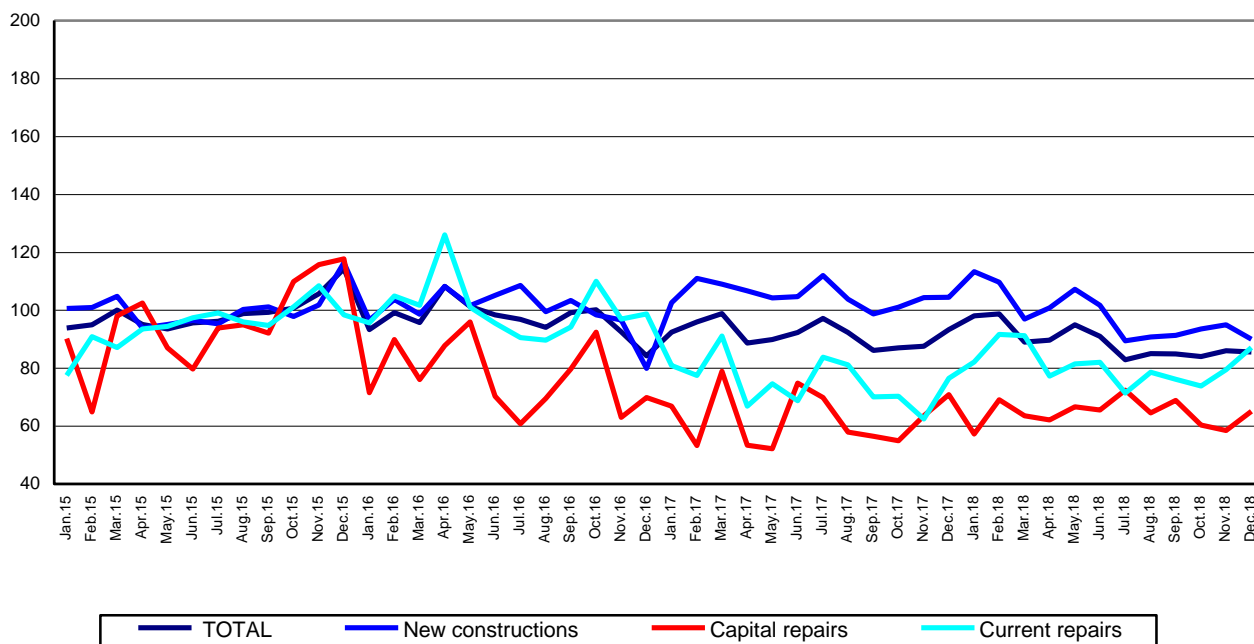
**Domain: Construction**

## CONSTRUCTION WORKS IN THE YEAR 2018

- In the year 2018, the volume of construction works decreased, as gross series, by 4.1% compared to the year 2017.
- Compared to the previous month, in December 2018, the volume of construction works increased, as gross series, by 15.5% and fell, as adjusted series according to the number of working days and to seasonality, by 0.5%.
- Compared to the corresponding month of the previous year, the volume of construction works dropped both as gross series and as adjusted series according to the number of working days and to seasonality, by 6.5% and by 8.2%, respectively.

**Monthly evolution of construction works, by structure elements,  
according to CANE Rev. 2  
- January 2010-December 2018 -  
(adjusted series according to the number of working days and to seasonality)**

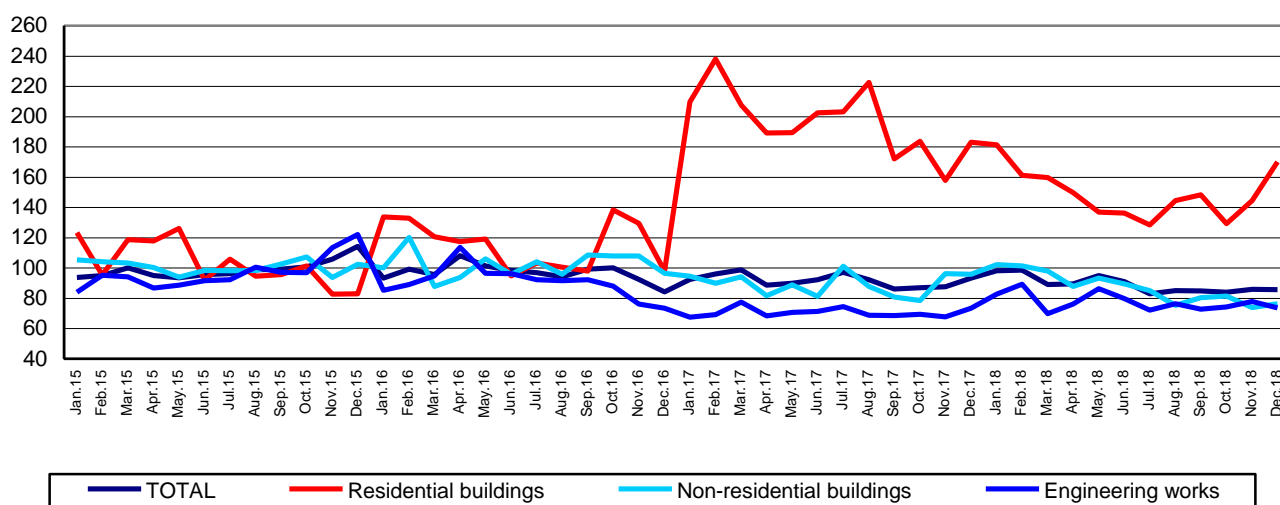
2015=100



[Graph data in xls format](#)

**Monthly evolution of construction works, by construction objects,  
according to CANE Rev. 2  
- January 2010-December 2018 -  
(adjusted series according to the number of working days and to seasonality)**

2015=100



[Graph data in xls format](#)

#### December 2018 compared to November 2018

The volume of construction works increased, as gross series, by 15.5%, an increase reflected in capital repair works (+38.7%), in maintenance and current repair works (+28.4%) and in new construction works (+7.0%).

By construction objects, there were rises as follows: in residential buildings (+30.4%), in non-residential buildings (+17.9%) and in engineering works (+9.1%).

The volume of construction works decreased overall, as adjusted series according to the number of working days and to seasonality, by 0.5%, a decrease reflected in new construction works (-5.3%). There were rises in capital repair works (+11.2%) and in maintenance and current repair works (+9.6%).

By construction objects, the volume of construction works fell by 5.4% in engineering works. Increases were reported for residential buildings (+17.7%) and for non-residential buildings (+3.4%).

#### December 2018 compared to December 2017

The volume of construction works decreased overall, as gross series, by 6.5%, a decrease reflected in new construction works (-12.7%) and in capital repair works (-6.2%). There was a rise in maintenance and current repair works (+12.3%).

By construction objects, the volume of construction works dropped in non-residential buildings (-20.8%) and in residential buildings (-3.3%). The engineering works rose by 0.4%.

The volume of construction works fell, as adjusted series according to the number of working days and to seasonality, by 8.2%, a fall reflected in new construction works (-13.9%) and in capital repair works (-8.1%). A rise was reported for maintenance and current repair works (+13.9%).

By construction objects, the volume of construction works dropped in non-residential buildings (-20.3%) and in residential buildings (-7.1%). The engineering works were up 0.3%.

## The year 2018 compared to the year 2017

The volume of construction works decreased overall, as gross series, by 4.1%, a decrease reflected in new construction works (-8.4%). There were rises in maintenance and current repair works (+7.9%) and in capital repair works (+1.5%).

By construction objects, the volume of construction works dropped in residential buildings (-23.6%) and in non-residential buildings (-5.5%). An increase was reported for engineering works (+8.0%).

### Construction works indices

- percentages -

		December 2018 compared to:		The year 2018/ The year 2017
		November 2018	December 2017	
<b>Constructions – total</b>	<b>G</b>	<b>115.5</b>	<b>93.5</b>	<b>95.9</b>
	<b>S</b>	<b>99.5</b>	<b>91.8</b>	<b>-</b>
- by structure elements:				
New constructions	G	107.0	87.3	91.6
	S	94.7	86.1	-
Capital repairs	G	138.7	93.8	101.5
	S	111.2	91.9	-
Maintenance and current repairs	G	128.4	112.3	107.9
	S	109.6	113.9	-
- by construction objects:				
Residential buildings	G	130.4	96.7	76.4
	S	117.7	92.9	-
Non-residential buildings	G	117.9	79.2	94.5
	S	103.4	79.7	-
Engineering works	G	109.1	100.4	108.0
	S	94.6	100.3	-

G = gross series; S = adjusted series according to the number of working days and to seasonality

[Table data in xls format](#)

### Additional information:

**IMPORTANT!** In order to show the changes in the structure of the economy, starting with the publication of the data for the reference month **January 2018**, the base year used in the calculation of construction works indices was changed **from 2010 to 2015**. The change in the base year also involves the updating of the weighting system; the changes in the weighting system reflect the structural changes that occurred in the activities of the national economy. These changes led to the adequate recalculation and revision of the previously published data series.

These changes will appear in press releases, statistical publications produced by the NIS and in the TEMPO online database.

The **construction volume indices** are determined by deflating the value data with the construction cost indices by structure element and by construction object. The construction volume indices are calculated for the overall construction branch (section F of CANE Rev. 2), by structure element (new construction works, capital repair works, maintenance and current repair works) and by construction object (residential buildings, non-residential buildings and engineering works).

The construction works indices overall are calculated as a weighted arithmetic mean of indices by structure element or of indices by construction object.

Beside the gross series of construction volume indices, **indices that are adjusted by number of working days and seasonality** are also calculated on a monthly basis, through the **regressive method**, a method recommended by the European regulations concerning short-term indicators (Council Regulation No 1165/1998).

For the correct interpretation of the indicators, please see the [Methodological Notes attached to the press release on the homepage](#).

For additional information, please see the TEMPO online database of the NIS (the data for December 2018 will be available on February 15, 2019) and the Monthly Statistical Bulletin (date of issue February 26, 2019).

For comparable data with the other Member States of the European Union, please see the Eurostat press release issued on Saturday, February 16, 2019 at the address <http://ec.europa.eu/eurostat/web/main>.

The next issue of the press release will be on Friday, March 15, 2019.

Press release archive: <http://www.insse.ro/cms/en/comunicate-de-presa-view>

**Communication Directorate**

E-mail: [birou presa@insse.ro](mailto:birou presa@insse.ro)

Tel: +4021 3181869