

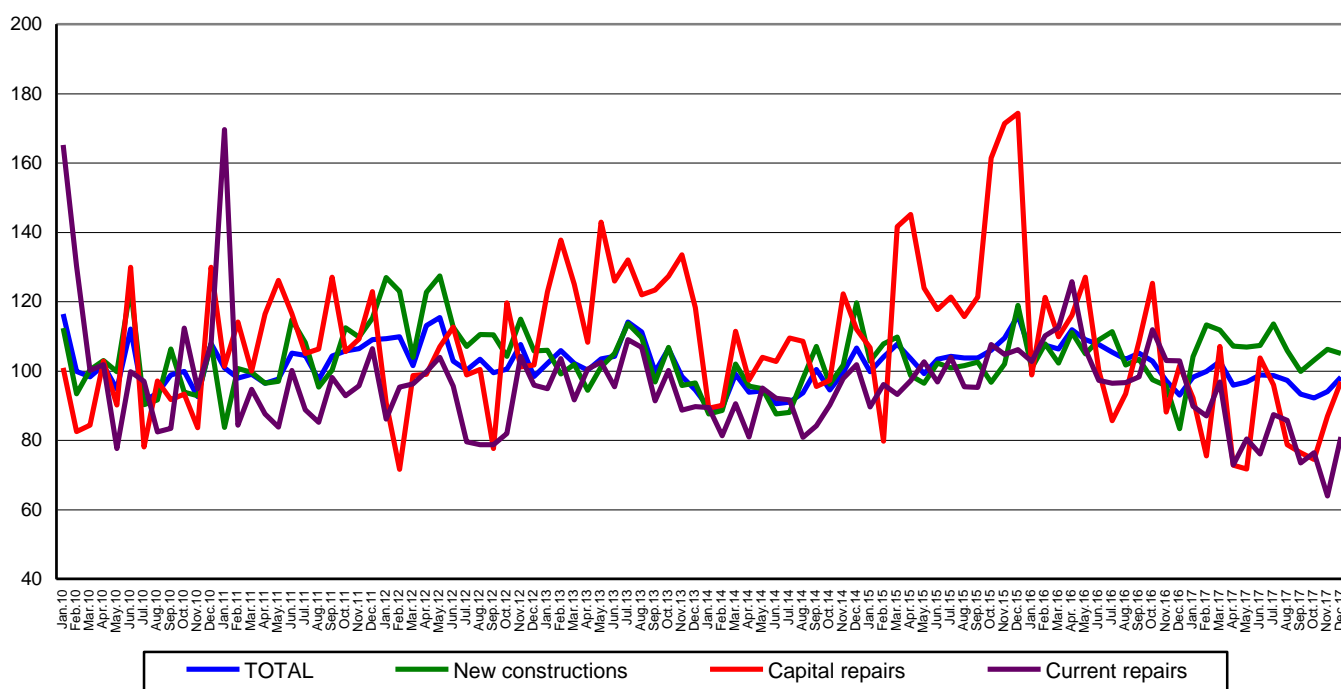
Domain: Construction

IN THE YEAR 2017, THE VOLUME OF CONSTRUCTION WORKS DECREASED BY 5.4% COMPARED TO THE YEAR 2016

- Compared to the previous month, in December 2017, the volume of construction works increased, as gross series, by 22.1% and, as adjusted series according to the number of working days and to seasonality, by 4.4%.
- Compared to the corresponding month of the previous year, the volume of construction works rose both as gross series and as adjusted series according to the number of working days and to seasonality, by 8.0% and by 5.6%, respectively.
- Compared to the year 2016, in the year 2017, the volume of construction works decreased as gross series by 5.4%.

**Monthly evolution of construction works, by structure elements,
according to CANE Rev. 2
- January 2010-December 2017 -
(adjusted series according to the number of working days and to seasonality)**

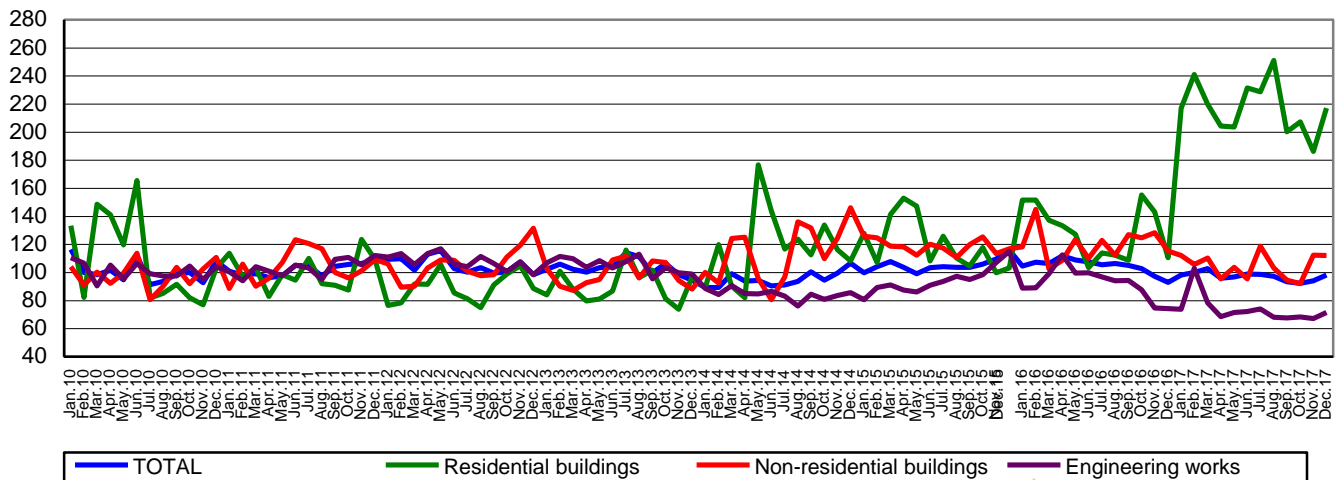
- 2010=100 -



[Graph data in xls format](#)

**Monthly evolution of construction works, by construction objects,
according to CANE Rev. 2
- January 2010-December 2017 -
(adjusted series according to the number of working days and to seasonality)**

- 2010=100 -



[Graph data in xls format](#)

December 2017 compared to November 2017

The volume of construction works increased, as gross series, by 22.1%, an increase highlighted in all structure elements: in maintenance and current repair works (+51.0%), in capital repair works (+32.3%) and in new construction works (+13.0%).

By construction objects, the engineering works increased by 26.9% and the residential buildings rose by 24.7%. The non-residential buildings were up 12.8%.

The volume of construction works increased, as adjusted series according to the number of working days and to seasonality, by 4.4%, an increase highlighted in maintenance and current repair works (+26.7%) and in capital repair works (+11.5%). There was a drop of 1.1% in new construction works.

By construction objects, the volume of construction works rose in residential buildings (+16.5%) and in engineering works (+6.6%). The non-residential buildings decreased by 0.3%.

December 2017 compared to December 2016

The volume of construction works increased, as gross series, by 8.0%. By structure elements, there was a rise of 25.1% in new construction works. There were drops of 19.3% in maintenance and current repair works and 2.8% in capital repair works.

By construction objects, the volume of construction works rose in residential buildings (+80.4%). The engineering works decreased by 3.3% and the non-residential buildings dropped by 2.5%.

The volume of construction works increased, as adjusted series according to the number of working days and to seasonality, by 5.6%. By structure elements, there was a rise of 26.0% in new construction works. There were drops of 21.4% in maintenance and current repair works and 4.5% in capital repair works.

By construction objects, the volume of construction works rose in residential buildings (+96.3). The engineering works dropped by 3.7% and the non-residential buildings decreased by 2.9%.

The year 2017 compared to the year 2016

The volume of construction works decreased overall, as gross series, by 5.4%. By structure elements, there were drops in maintenance and current repair works (-24.6%) and in capital repair works (-17.7%). The new construction works increased by 4.9%.

By construction objects, there were drops in engineering works (-21.3%) and in non-residential buildings (-12.6%). There was a rise of 69.7% in residential buildings.

Construction works indices

- percentages -

		DECEMBER 2017 compared to:		The year 2017/ the year 2016
		November 2017	December 2016	
Constructions - total	G	122.1	108.0	94.6
	S	104.4	105.6	-
- by structure elements:				
New constructions	G	113.0	125.1	104.9
	S	98.9	126.0	-
Capital repairs	G	132.3	97.2	82.3
	S	111.5	95.5	-
Maintenance and current repairs	G	151.0	80.7	75.4
	S	126.7	78.6	-
- by construction objects:				
Residential buildings	G	124.7	180.4	169.7
	S	116.5	196.3	-
Non-residential buildings	G	112.8	97.5	87.4
	S	99.7	97.1	-
Engineering works	G	126.9	96.7	78.7
	S	106.6	96.3	-

G = gross series; S = adjusted series according to the number of working days and to seasonality

[Table data in xls format](#)

Additional information:

The **value of construction works** includes new construction works, capital repair works and maintenance and current repair works carried out by units with main activity in the field (section F of CANE Rev. 2).

The **volume indices in constructions** are determined by deflating the value data with the cost indices in constructions, by structure elements and by construction objects.

For the correct interpretation of the indicators, please see the [Methodological Note attached to the press release on the homepage](#).

For additional information, please see the statistical publication *Monthly Statistical Bulletin* (date of issue February 26, 2018) and the TEMPO online database of the NIS (the data for December 2017 will be available on February 14, 2018).

For comparable data with the other Member States of the European Union, please see the Eurostat press release issued on Monday, February 19, 2018 at the address <http://ec.europa.eu/eurostat/web/main>.

The next issue of the press release will be on Friday, March 16, 2018.

Press release archive: <http://www.insse.ro/cms/en/comunicate-de-pres-a-view>

Communication Directorate

E-mail: biroupres@insse.ro

Tel: +4021 3181869