

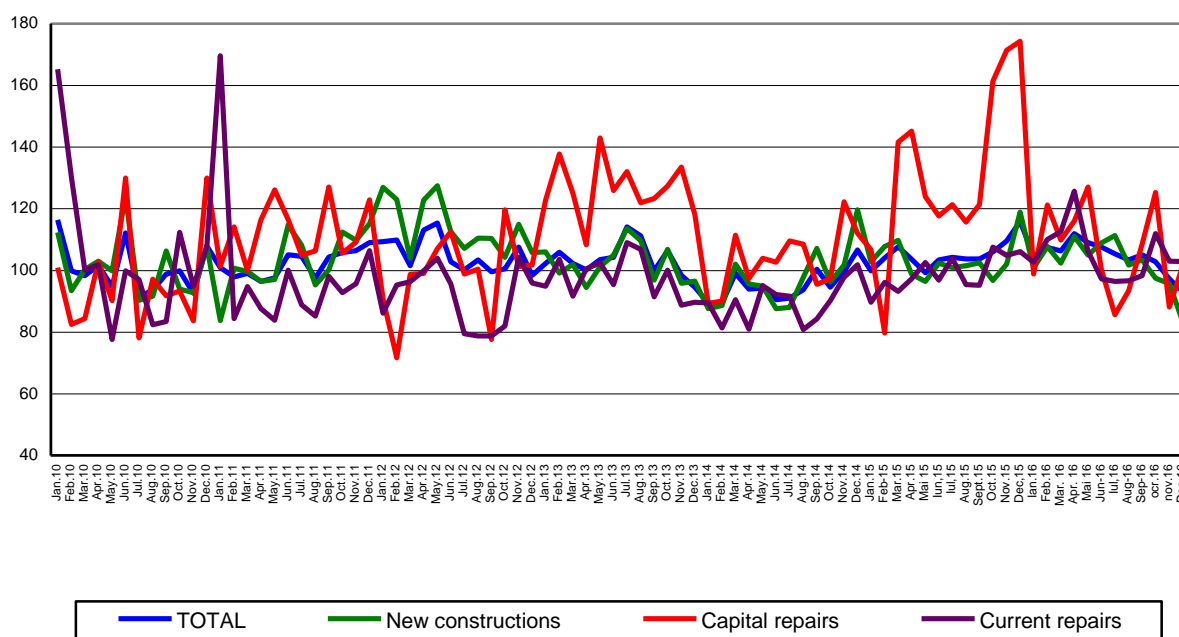
Domain: Construction

THE CONSTRUCTION WORKS DECREASED BY 4.8% IN 2016

- In December 2016, the volume of construction works increased compared to the previous month as gross series by 6.4% and decreased as adjusted series by the number of working days and by seasonality by 4.3%.
- Compared to the corresponding month of the previous year, the volume of construction works decreased, both as gross series and as adjusted series by the number of working days and by seasonality by 27.7% and by 19.8%, respectively.
- In 2016, the volume of construction works decreased, as gross series, by 4.8% compared to 2015.

**Monthly evolution of construction works, by structure elements,
according to CANE Rev. 2
- January 2010 – December 2016-
((adjusted series according to the number of working days and to seasonality)**

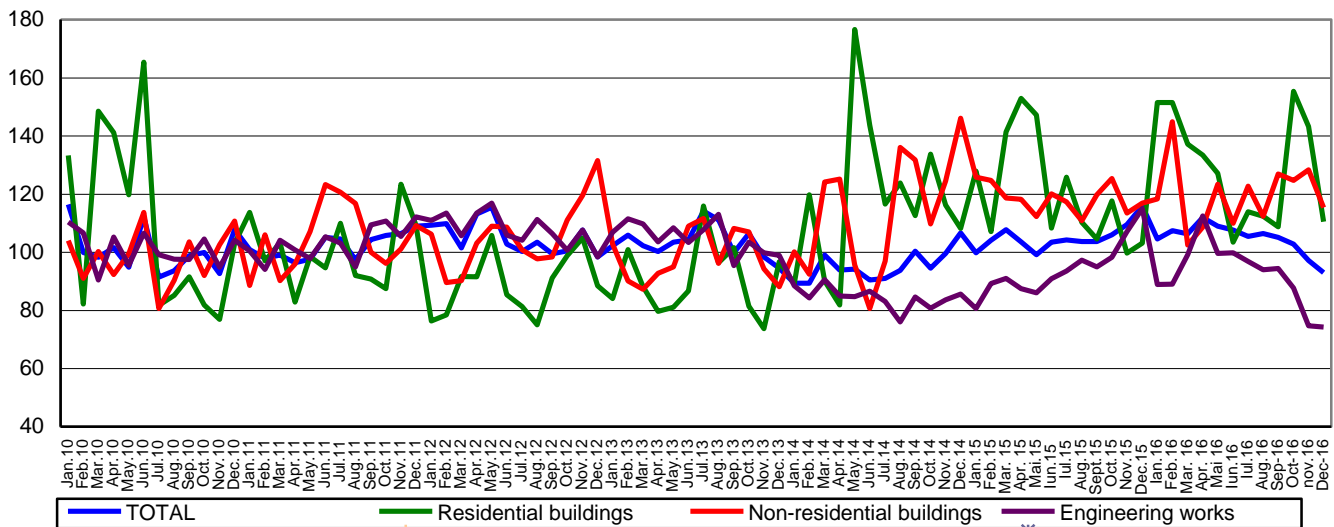
- 2010=100 -



[Graph data in xls format](#)

**Monthly evolution of construction works, by construction objects,
according to CANE Rev. 2**
- January 2010 – December 2016 -
(adjusted series according to the number of working days and to seasonality)

- 2010=100 -



[Graph data in xls format](#)

December 2016 compared to November 2016

The volume of construction works increased as gross series, by 6.4%, increase highlighted in capital repairs works by 37.4% and maintenance and current repairs works by 12.3%. The new construction works decreased by 2.1%. By construction objects, there were rises in engineering works of 15.9% and in non-residential buildings of 3.1%. The volume of construction works decreased in residential buildings by 16.1%.

The volume of construction works decreased per total, as adjusted series by the number of working days and by seasonality, by 4.3%, decrease highlighted in the following structure elements: in new construction works by 13.0% and in maintenance and current repairs works by 0.1%. Capital repairs works increased by 15.2%.

By construction objects, there were drops as follows: in residential buildings of 22.8%, in non-residential buildings of 10.1% and in engineering works of 0.6%.

December 2016 compared to December 2015

The volume of construction works decreased, as gross series, by 27.7%. By structure elements, there were drops in all the structure elements: in capital repairs works of 41.0%, in new construction works of 33.3% and in maintenance and current repairs works of 0.5%.

By construction objects, the volume of construction works decreased in engineering works by 40.9% and in non-residential buildings by 6.1%. There were rises in residential buildings of 16.7%.

The volume of construction works decreased, as adjusted series by the number of working days and by seasonality, by 19.8%. By structure elements, there were drops in all the structure elements: in capital repairs works of 41.8%, in new construction works of 29.9% and in maintenance and current repairs works of 3.0%.

By construction objects, the volume of construction works decreased in engineering works by 35.4% and in non-residential buildings by 1.4%. There were rises in residential buildings of 7.1%.

2016 compared to 2015

The volume of construction works decreased per total, as gross series, by 4.8%. By structure elements, there were drops in capital repair works of 23.5% and in new construction works of 2.7%. The maintenance and current repairs works increased by 1.5%.

By construction objects, there were drops in engineering works 11.2%. There were rises in residential buildings of 12.1% and in non-residential buildings of 1.1%.

Construction works indices

		December 2016 compared to:		- percentage -
		November 2016	December 2015	Year 2016/ Year 2015
Constructions - total	B	106.4	72.3	95.2
	S	95.7	80.2	-
- by structure elements:				
New constructions	B	97.9	66.7	97.3
	S	87.0	70.1	-
Capital repairs	B	137.4	59.0	76.5
	S	115.2	58.2	-
Maintenance and current repairs	B	112.3	99.5	101.5
	S	99.9	97.0	-
- by construction objects:				
Residential buildings	B	83.9	116.7	112.1
	S	77.2	107.1	-
Non-residential buildings	B	103.1	93.9	101.1
	S	89.9	98.6	-
Engineering works	B	115.9	59.1	88.8
	S	99.4	64.6	-

B= gross series; S= adjusted series according to the number of working days and to seasonality;

[Graphic data in xls format](#)

Additional Information:

For the correct interpretation of results, kindly see the [Methodological Note attached to the press release on the homepage](#).

For additional information, kindly see the statistical publication Monthly Statistical Bulletin (date of issue February 27, 2017) and the on line database TEMPO of INS (data for December 2016 will be available on February 14, 2017).

For comparable data with the other Member States of the European Union, kindly see the Eurostat press release, issued on Friday, February 17, 2017 at the address: <http://ec.europa.eu/eurostat/web/main>

The next issue of the press release will be on Wednesday, March 15, 2017.

The archive of the press releases: <http://www.insse.ro/cms/en/comunicate-de-presa-view>

The Directorate of Communication

e-mail: biroupresa@insse.ro

Tel: +4021 3181869