

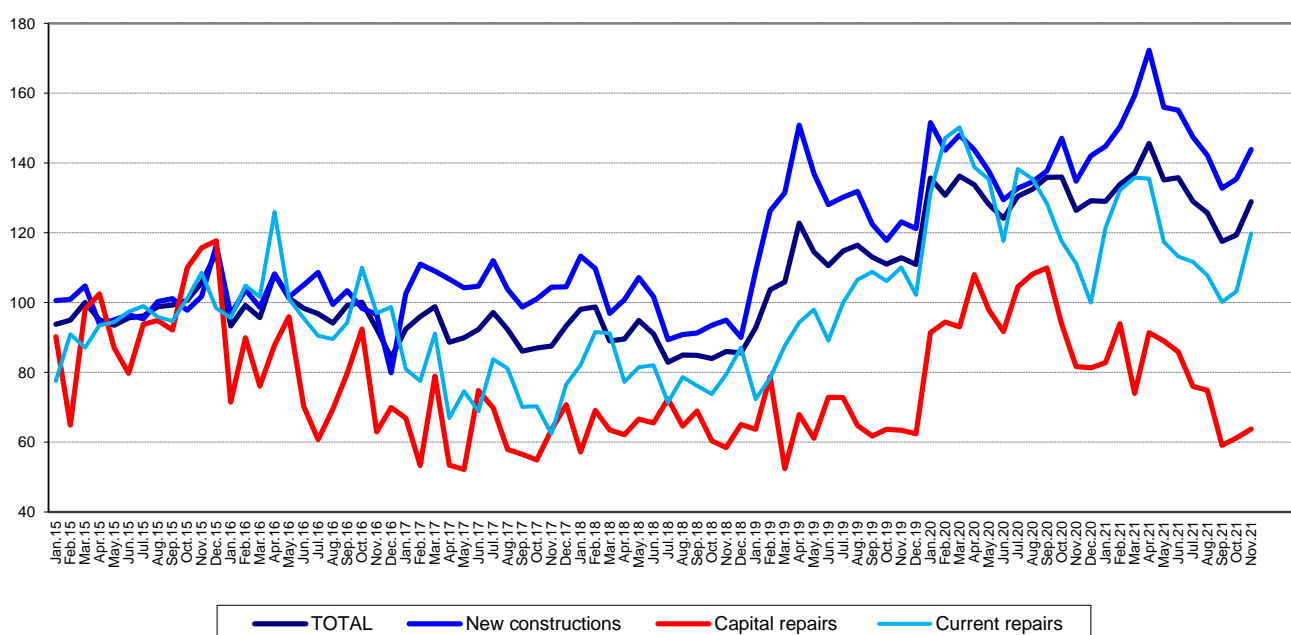
Domain: Construction

CONSTRUCTION WORKS IN NOVEMBER 2021

- In November 2021, the volume of construction works increased, as gross series, by 16.1% compared to October 2021 and was up 7.9% as adjusted series according to the number of working days and to seasonality.
- Compared to November 2020, the volume of construction works rose, as gross series, by 3.9% and was up 2.0% as adjusted series according to the number of working days and to seasonality.
- Compared to the 1.I-30.XI.2020 period, in the 1.I-30.XI.2021 period, the volume of construction works decreased, as gross series, by 1.2% and fell, as adjusted series according to the number of working days and to seasonality, by 0.9%.

Monthly evolution of construction works, by structure elements, according to NACE Rev. 2
- January 2015-November 2021 -
 (adjusted series according to the number of working days and to seasonality)

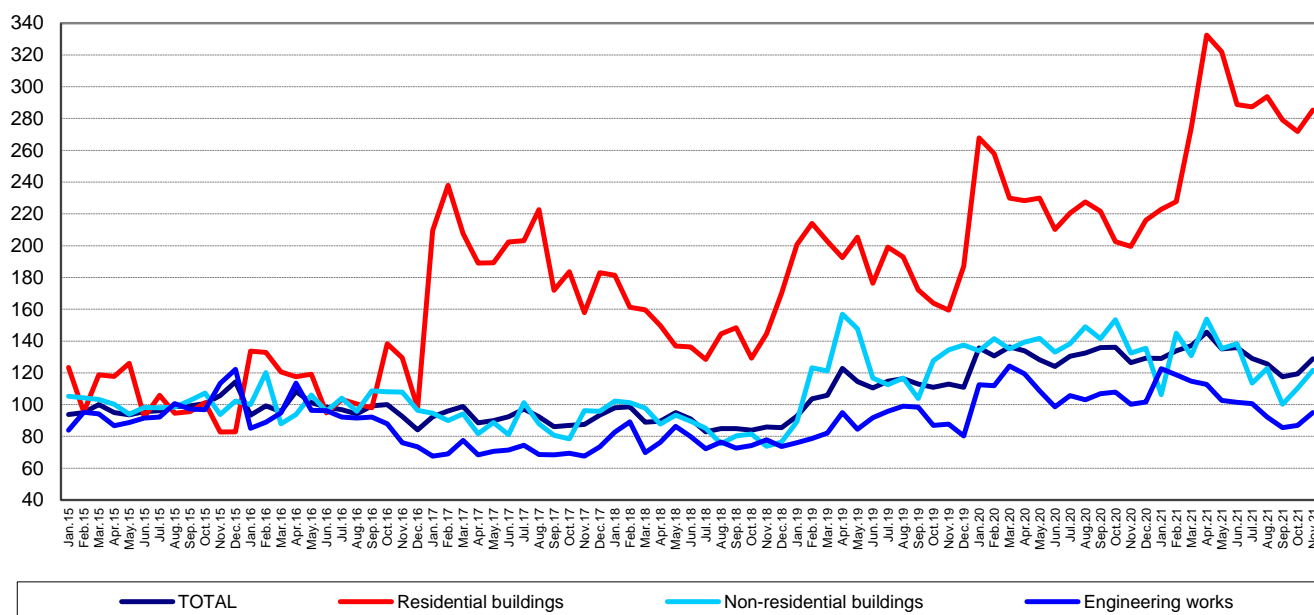
- 2015=100 -



[The graph data in xls format](#)

Monthly evolution of construction works, by construction objects, according to NACE Rev. 2
- January 2015-November 2021 -
(adjusted series according to the number of working days and to seasonality)

- 2015=100 -



[The graph data in xls format](#)

November 2021 compared to October 2021

The volume of construction works increased, as gross series, by 16.1%, an increase reflected in new construction works (+16.7%), in maintenance and current repair works (+14.9%) and in capital repair works (+14.5%).

By construction objects, the following rises were reported: for non-residential buildings (+20.7%), for engineering works (+19.9%) and for residential buildings (+5.9%).

The volume of construction works rose, as adjusted series according to the number of working days and to seasonality, by 7.9%, a rise reflected in maintenance and current repair works (+16.1%), in new construction works (+6.3%) and in capital repair works (+4.3%).

By construction objects, the volume of construction works increased for non-residential buildings (+10.2%), for engineering works (+9.0%) and for residential buildings (+5.0%).

November 2021 compared to November 2020

The volume of construction works increased overall, as gross series, by 3.9%. By structure elements, rises were reported for new construction works (+8.1%) and for maintenance and current repair works (+3.5%). The capital repair works were down 20.6%.

By construction objects, the residential buildings were up 42.9%. The volume of construction works decreased for non-residential buildings (-6.7%) and for engineering works (-4.4%).

The volume of construction works rose overall, as adjusted series according to the number of working days and to seasonality, by 2.0%. By structure elements, increases were recorded for maintenance and current repair works (+7.7%) and for new construction works (+6.8%). The capital repair works were down 21.8%.

By construction objects, the residential buildings were up 43.0%. The volume of construction works dropped for non-residential buildings (-8.2%) and for engineering works (-5.4%).

The 1.I-30.XI.2021 period compared to the 1.I-30.XI.2020 period

The volume of construction works decreased overall, as gross series, by 1.2%. By structure elements, drops were reported for capital repair works (-23.4%) and for maintenance and current repair works (-11.5%). The new construction works were up 6.6%.

By construction objects, drops were recorded for non-residential buildings (-11.5%) and for engineering works (-8.1%). The residential buildings rose by 29.6%.

The volume of construction works fell, as adjusted series according to the number of working days and to seasonality, by 0.9%, a fall reflected in capital repair works (-20.7%) and in maintenance and current repair works (-10.5%). The new construction works rose by 6.4%.

By construction objects, falls were reported for non-residential buildings (-10.5%) and for engineering works (-5.5%). The residential buildings were up 23.6%.

Construction works indices

- percentages -

		NOVEMBER 2021 compared to:		1.I-30.XI.2021/ 1.I-30.XI.2020
		OCTOBER 2021	NOVEMBER 2020	
Constructions – total	G	116.1	103.9	98.8
	S	107.9	102.0	99.1
- by structure elements:				
New constructions	G	116.7	108.1	106.6
	S	106.3	106.8	106.4
Capital repairs	G	114.5	79.4	76.6
	S	104.3	78.2	79.3
Maintenance and current repairs	G	114.9	103.5	88.5
	S	116.1	107.7	89.5
- by construction objects:				
Residential buildings	G	105.9	142.9	129.6
	S	105.0	143.0	123.6
Non-residential buildings	G	120.7	93.3	88.5
	S	110.2	91.8	89.5
Engineering works	G	119.9	95.6	91.9
	S	109.0	94.6	94.5

G = gross series; S = adjusted series according to the number of working days and to seasonality

[The table data in xls format](#)

Additional information:

- The **construction volume indices** are determined by deflating the value data with the construction cost indices by structure element and by construction object. The construction volume indices are calculated for the overall construction branch (section F of NACE Rev. 2), by structure element (new construction works, capital repair works, maintenance and current repair works) and by construction object (residential buildings, non-residential buildings and engineering works).
- The construction works indices overall are calculated as a weighted arithmetic mean of indices by structure element or of indices by construction object.
- Beside the gross series of construction volume indices, **indices that are adjusted by number of working days and seasonality** are also calculated on a monthly basis, through the **regressive method**, using the **JDEMETRA+ version 2.2.0** software package (**the TRAMO/SEATS method**), a method recommended by the European regulations concerning short-term indicators (Council Regulation No 1165/1998).

For the correct interpretation of the indicators, please see the [Methodological Notes attached to the press release on the homepage](#).

For additional information, please see the TEMPO online database of the NIS (the data for November 2021 will be available on January 19, 2022) and the Monthly Statistical Bulletin (date of issue January 27, 2022).

For comparative data at EU level, please see the Eurostat press release to be issued on Wednesday, January 19, 2022 at the address <https://ec.europa.eu/eurostat/web/main>.

The next issue of the press release will be on Thursday, February 17, 2022.

Press release archive: <https://insse.ro/cms/en/comunicate-de-presa-view>

Communication Directorate

E-mail: birou presa@insse.ro

Tel: +4021 3181869