

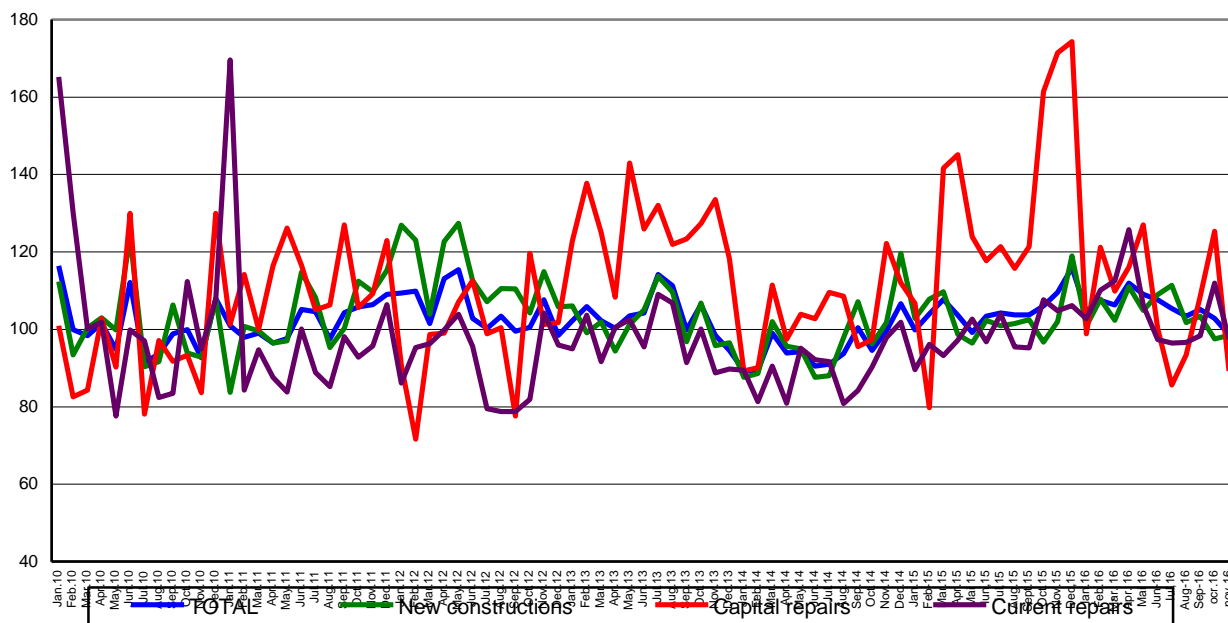
Domain: Construction

IN NOVEMBER 2016, THE CONSTRUCTION WORKS DECREASED BY 13.3% COMPARED TO NOVEMBER 2015

- In November 2016, the volume of construction works decreased compared to the previous month both as gross series by 2.3% and as adjusted series by the number of working days and by seasonality by 4.0%.
- Compared to the corresponding month of the previous year, the volume of construction works decreased, both as gross series and as adjusted series by the number of working days and by seasonality by 13.3% and by 9.9%, respectively.
- In the period 1.I-30.XI.2016, the volume of construction works decreased compared to the period 1.I-30.XI.2015, as gross series, by 0.9% and increased as adjusted series by the number of working days and by seasonality by 1.5%.

Monthly evolution of construction works, by structure elements, according to CANE Rev. 2 - January 2010 – November 2016- (adjusted series according to the number of working days and to seasonality)

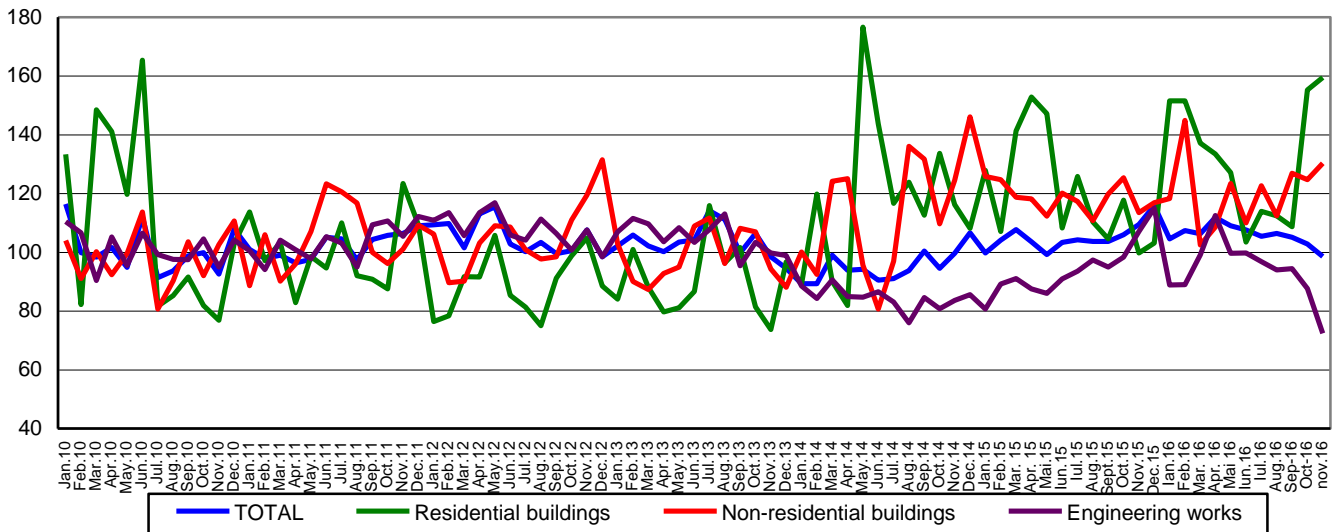
- 2010=100 -



[Graph data in xls format](#)

**Monthly evolution of construction works, by construction objects,
according to CANE Rev. 2
- January 2010 – November 2016 -
(adjusted series according to the number of working days and to seasonality)**

- 2010=100 -



[Graph data in xls format](#)

November 2016 compared to October 2016

The volume of construction works decreased, as gross series, by 2.3%, decrease highlighted in capital repairs works by 22.3% and maintenance and current repairs works by 14.2%.

The new construction works increased by 9.3%.

By construction objects, the volume of construction works decreased in engineering works by 13.4%. The volume of construction works increased in non-residential buildings by 12.2% and in residential buildings by 8.1%.

The volume of construction works decreased per total, as adjusted series by the number of working days and by seasonality, by 4.0%, decrease highlighted in the following structure elements: capital repairs works by 28.8% and in maintenance and current repairs works by 12.9%. The new construction works increased by 0.9%.

By construction objects, there were drops in engineering works of 17.4%. There were rises in non-residential buildings of 4.5% and in residential buildings of 2.7%.

November 2016 compared to November 2015

The volume of construction works decreased, as gross series, by 13.3%. By structure elements, there were drops in all the structure elements: in capital repairs works of 43.5%, in maintenance and current repairs works of 15.8% and in new construction works of 2.3%.

By construction objects, the volume of construction works decreased in engineering works by 37.4%. There were rises in residential buildings of 78.2% and in non-residential buildings of 17.9%.

The volume of construction works decreased, as adjusted series by the number of working days and by seasonality, by 9.9%. By structure elements, there were drops in all the structure elements: in capital repairs works of 48.0%, in maintenance and current repairs works of 7.0% and in new construction works of 3.5%.

By construction objects, the volume of construction works decreased in engineering works by 32.3%. There were rises in residential buildings of 60.0% and in non-residential buildings of 14.8% .

Period 1.I-30.XI.2016 compared to period 1.I-30.XI.2015

The volume of construction works decreased per total, as gross series, by 0.9%. By structure elements, there were drops in capital repair works of 19.6%. There were rises in new construction works of 2.7% and in maintenance and current repairs works of 0.9%. By construction objects, there were drops in engineering works of 5.8%. There were rises in residential buildings of 13.5% and in non-residential buildings of 2.3%.

The volume of construction works increased per total, as adjusted series by the number of working days and by seasonality, by 1.5%. By structure elements, there were rises in maintenance and current repairs works of 6.7% and in new construction works of 2.4%. The capital repair works decreased by 16.4%.

By construction objects, the volume of construction works increased as follows: in residential buildings by 8.3%, in engineering works by 1.7% and in non-residential buildings by 1.4%.

Construction works indices

- percentage-

		November 2016 compared to:		Period 1.I-30.XI.2016/ Period 1.I-30.XI.2015
		October 2016	November 2015	
Constructions - total	B	97.7	86.7	99.1
	S	96.0	90.1	101.5
- by structure elements:				
New constructions	B	109.3	97.7	102.7
	S	100.9	96.5	102.4
Capital repairs	B	77.7	56.5	80.4
	S	71.2	52.0	83.6
Maintenance and current repairs	B	85.8	84.2	100.9
	S	87.1	93.0	106.7
- by construction objects:				
Residential buildings	B	108.1	178.2	113.5
	S	102.7	160.0	108.3
Non-residential buildings	B	112.2	117.9	102.3
	S	104.5	114.8	101.4
Engineering works	B	86.6	62.6	94.2
	S	82.6	67.7	101.7

B= gross series; S= adjusted series according to the number of working days and to seasonality;

[Graphic data in xls format](#)

Additional Information:

For the correct interpretation of results, kindly see the [Methodological Note attached to the press release on the homepage](#).

For additional information, kindly see the statistical publication Monthly Statistical Bulletin (date of issue January 26, 2017) and the on line database TEMPO of INS (data for November 2016 will be available on January 13, 2017). For comparable data with the other Member States of the European Union, kindly see the Eurostat press release, issued on Wednesday, January 18, 2017 at the address: <http://ec.europa.eu/eurostat/web/main>

The next issue of the press release will be on Tuesday, February 14, 2017.

The archive of the press releases: <http://www.insse.ro/cms/en/comunicate-de-pres-a-view>

The Directorate of Communication

e-mail: birou presa@insse.ro

Tel: +4021 3181869