

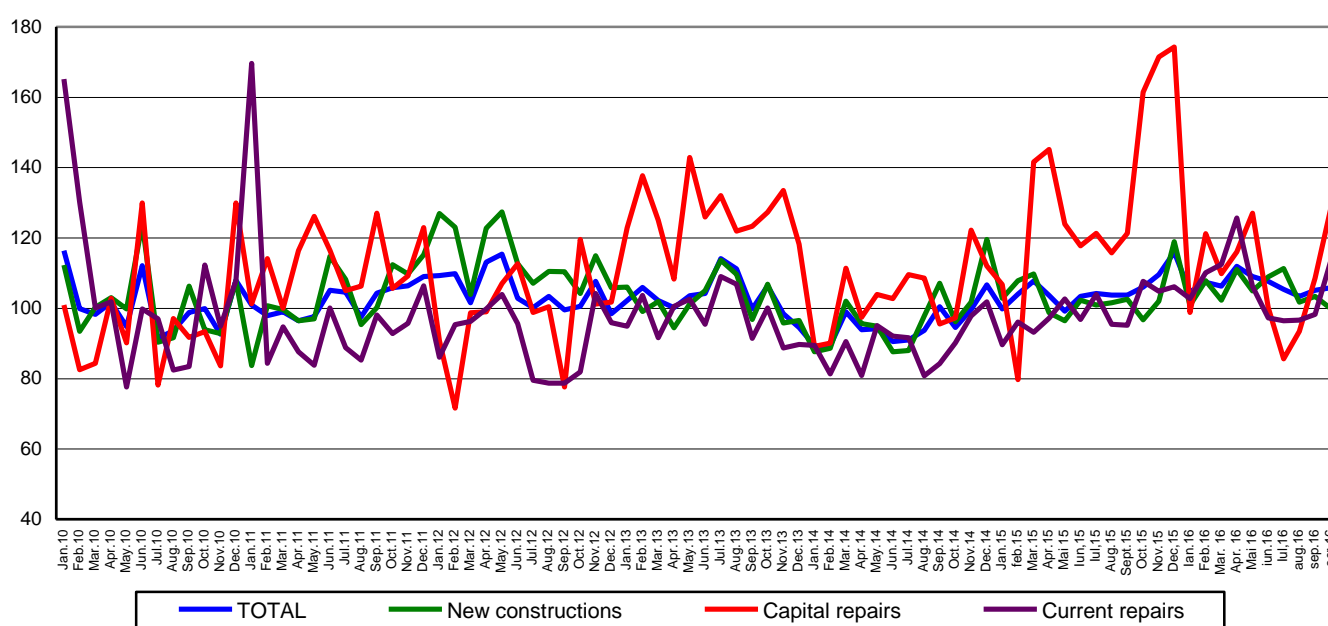
Domain: Construction

IN OCTOBER 2016, THE CONSTRUCTION WORKS DECREASED BY 0.1% COMPARED TO OCTOBER 2015

- In October 2016, the volume of construction works increased compared to the previous month as gross series by 7.3% and as adjusted series by the number of working days and by seasonality by 0.7%.
- Compared to the corresponding month of the previous year, the volume of construction works decreased, both as gross series and as adjusted series by the number of working days and by seasonality by 0.1% and by 0.2%, respectively.
- In the period 1.I-31.X.2016, the volume of construction works increased, compared to the period 1.I-31.X.2015 both as gross series and as adjusted series by the number of working days and by seasonality by 1.3% and by 3.0%, respectively.

**Monthly evolution of construction works, by structure elements,
according to CANE Rev. 2
- January 2010 – October 2016-**
(adjusted series according to the number of working days and to seasonality)

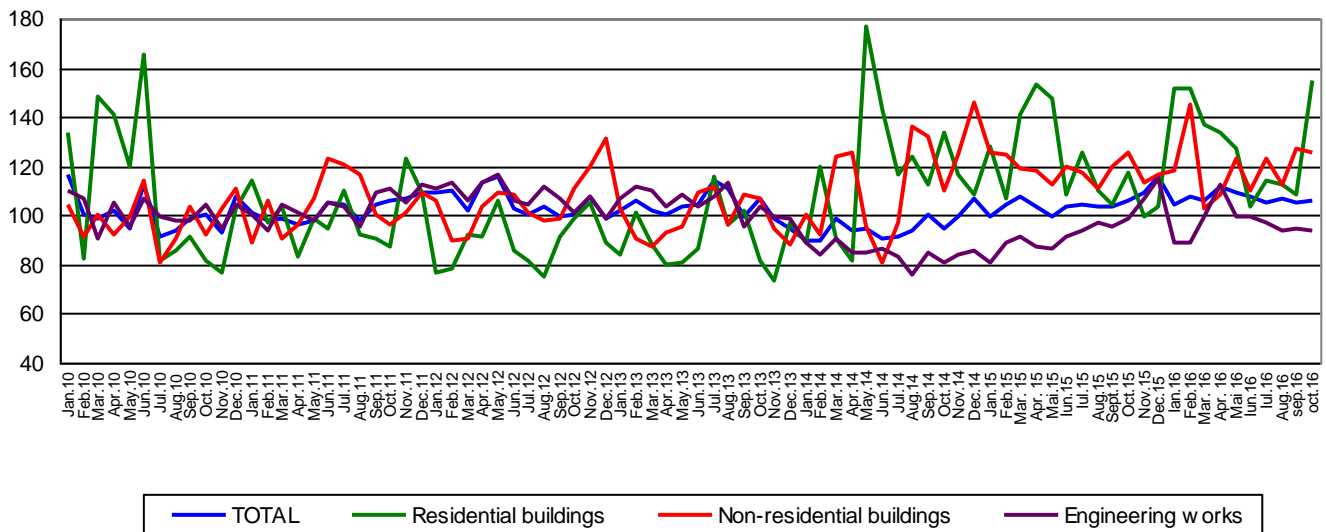
- 2010=100 -



[Graph data in xls format](#)

**Monthly evolution of construction works, by construction objects,
according to CANE Rev. 2
- January 2010 – October 2016 -
(adjusted series according to the number of working days and to seasonality)**

- 2010=100 -



[Graph data in xls format](#)

October 2016 compared to September 2016

The volume of construction works increased, as gross series, by 7.3%, increase highlighted in the following structure elements: capital repairs works of 36.0% and maintenance and current repairs works of 28.6%.

The new construction works decreased by 6.1%.

By construction objects, there were rises in residential buildings of 47.6% and in engineering works of 4.9%. The volume of construction works of non-residential buildings decreased by 3.9%.

The volume of construction works increased, as adjusted series by the number of working days and by seasonality, by 0.7%, increase highlighted in the following structure elements: capital repairs works of 18.4% and in maintenance and current repairs works of 15.5%. The new construction works decreased by 3.3%.

By construction objects, there were rises in residential buildings of 42.6%. There were drops in non-residential buildings of 1.0% and in engineering works of 0.9%.

October 2016 compared to October 2015

The volume of construction works decreased, as gross series, by 0.1%. By structure elements, there were drops in capital repairs works of 15.2%. There were rises in maintenance and current repairs works of 9.4% and the new construction works kept the same level.

By construction objects, the volume of construction works decreased in engineering works by 7.6%. There were rises in residential buildings of 34.4% and in non-residential buildings of 0.3%.

The volume of construction works decreased, as adjusted series by the number of working days and by seasonality, by 0.2%. By structure elements, the capital repair works decreased by 20.4%. There were rises in maintenance and current repairs works of 5.5% and in new construction works of 3.4%.

By construction objects, the volume of construction works decreased in engineering works by 4.8%. There were rises in residential buildings of 31.6% and in non-residential buildings of 0.2% .

Period 1.I.-31.X.2016 compared to period 1.I.-31.X.2015

The volume of construction works increased per total, as gross series, by 1.3%. By structure elements, there were rises in maintenance and current repairs works of 4.1% and in new construction works of 3.8%.

The capital repair works decreased by 14.5%.

By construction objects, there were rises as follows: in residential buildings of 6.8% and in non-residential buildings and engineering works of 0.5%, each.

The volume of construction works increased per total, as adjusted series by the number of working days and by seasonality, by 3.0%.

By structure elements, there were rises in maintenance and current repairs works of 8.4% and in new construction works of 3.2%. The capital repair works decreased by 11.8%.

By construction objects, the volume of construction works increased in engineering works by 6.4%, in residential buildings by 4.1% and in non-residential buildings by 0.2%.

Construction works indices

- percentage-

		October 2016 compared to:		Period 1.I-31.X.2016/ Period 1.I-31.X.2015
		September 2016	October 2016	
Constructions - total	B	107.3	99.9	101.3
	S	100.7	99.8	103.0
- by structure elements:				
New constructions	B	93.9	100.0	103.8
	S	96.7	103.4	103.2
Capital repairs	B	136.0	84.8	85.5
	S	118.4	79.6	88.2
Maintenance and current repairs	B	128.6	109.4	104.1
	S	115.5	105.5	108.4
- by construction objects:				
Residential buildings	B	147.6	134.4	106.8
	S	142.6	131.6	104.1
Non-residential buildings	B	96.1	100.3	100.5
	S	99.0	100.2	100.2
Engineering works	B	104.9	92.4	100.5
	S	99.1	95.2	106.4

B= gross series; S= adjusted series according to the number of working days and to seasonality;

[Graphic data in xls format](#)

Additional Information:

For the correct interpretation of results, kindly see the [Methodological Note attached to the press release on the homepage](#).

For additional information, kindly see the statistical publication Monthly Statistical Bulletin (date of issue December 27, 2016) and the on line database TEMPO of INS (data for October 2016 will be available on December 13, 2016).

For comparable data with the other Member States of the European Union, kindly see the Eurostat press release, issued on Monday, December 19, 2016 at the address: <http://ec.europa.eu/eurostat/web/main>

The next issue of the press release will be on Friday, January 13, 2017.

The archive of the press releases: <http://www.insse.ro/cms/en/comunicate-de-presa-view>

The Directorate of Communication

e-mail: biroupresa@insse.ro

Tel: +4021 3181869