

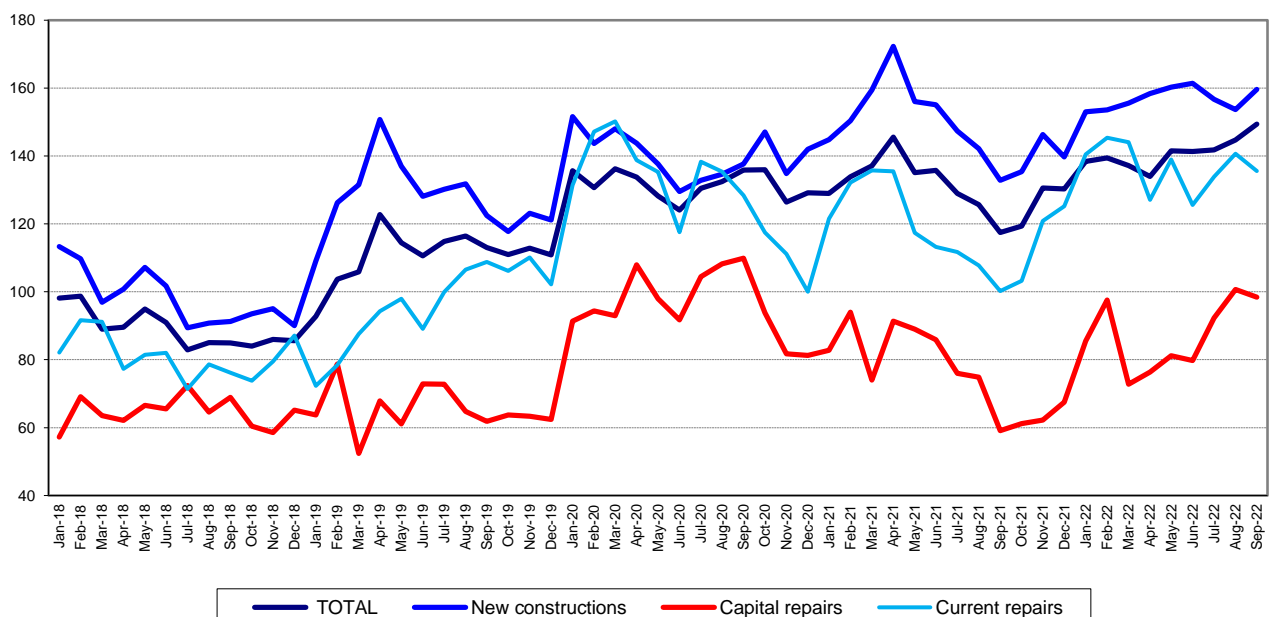
Domain: Construction

## CONSTRUCTION WORKS IN SEPTEMBER 2022

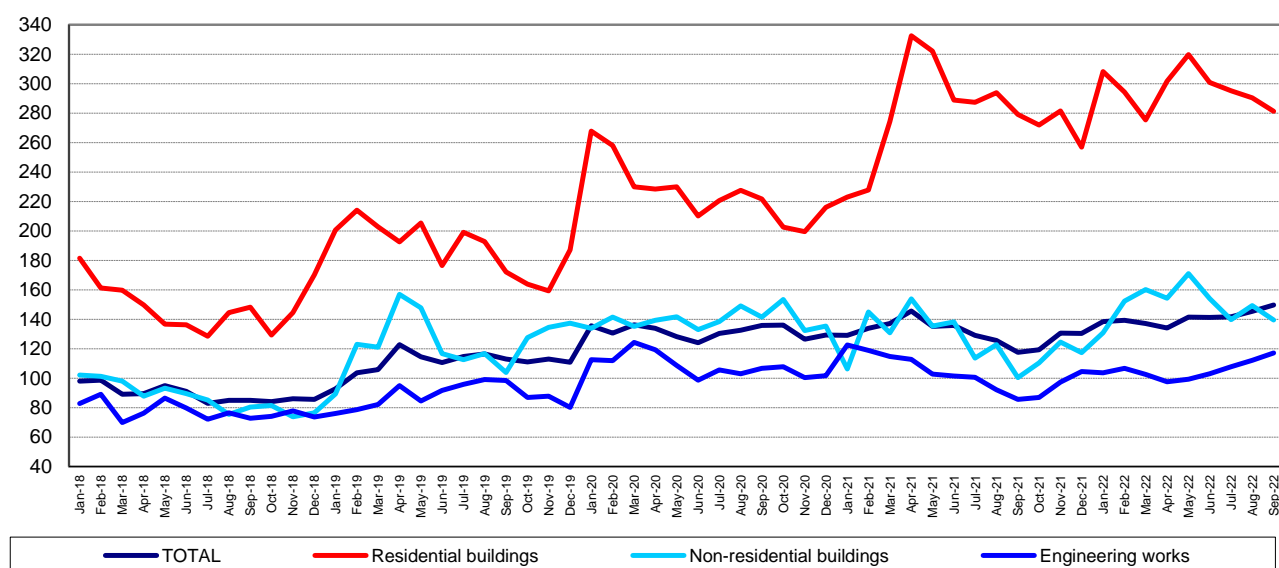
- In September 2022, the volume of construction works increased, as gross series, by 8.2% compared to August 2022 and was up 3.3% as adjusted series according to the number of working days and to seasonality.
- In September 2022, the volume of construction works rose, as gross series, by 26.4% compared to September 2021 and was up 27.2% as adjusted series according to the number of working days and to seasonality.
- In the 1.I-30.IX.2022 period, the volume of construction works increased, as gross series, by 8.9% compared to the 1.I-30.IX.2021 period and was up 6.6% as adjusted series according to the number of working days and to seasonality.

**Monthly evolution of construction works, by structure elements, according to NACE Rev. 2**  
- January 2018-September 2022 -  
(adjusted series according to the number of working days and to seasonality)

- 2015=100 -


[The graph data in xls format](#)

**Monthly evolution of construction works, by construction objects, according to NACE Rev. 2**  
**- January 2018-September 2022 -**  
**(adjusted series according to the number of working days and to seasonality)**  
- 2015=100 -



[The graph data in xls format](#)

### September 2022 compared to August 2022

The volume of construction works increased, as gross series, by 8.2%, an increase reflected in new construction works (+10.1%), in maintenance and current repair works (+5.0%) and in capital repair works (+4.2%).

By construction objects, rises were reported for engineering works (+11.4%), for non-residential buildings (+7.0%) and for residential buildings (+3.6%).

The volume of construction works rose, as adjusted series according to the number of working days and to seasonality, by 3.3%, a rise reflected in new construction works (+3.8%). The maintenance and current repair works were down 3.6%, and the capital repair works dropped 2.3%.

By construction objects, the volume of construction works increased for engineering works (+4.5%). The non-residential buildings dropped 4.4% and the residential buildings were down 2.4%.

### September 2022 compared to September 2021

The volume of construction works increased, as gross series, by 26.4%, an increase reflected in capital repair works (+69.5%), in maintenance and current repair works (+35.0%) and in new construction works (+18.9%).

By construction objects, rises were reported for non-residential buildings (+38.1%) and for engineering works (+37.3%). The residential buildings dropped 0.3%.

The volume of construction works increased overall, as adjusted series according to the number of working days and to seasonality, by 27.2%. By structure elements, rises were recorded for capital repair works (+66.5%), for maintenance and current repair works (+35.4%) and for new construction works (+20.2%).

By construction objects, the volume of construction works rose for non-residential buildings (+39.2%), for engineering works (+36.9%) and for residential buildings (+0.8%).

### The 1.I-30.IX.2022 period compared to the 1.I-30.IX.2021 period

The volume of construction works increased overall, as gross series, by 8.9%. By structure elements, rises were reported for maintenance and current repair works (+17.1%), for capital repair works (+12.9%) and for new construction works (+5.8%).

By construction objects, increases were recorded for non-residential buildings (+19.4%), for engineering works (+5.4%) and for residential buildings (+4.0%).

The volume of construction works was up 6.6% as adjusted series according to the number of working days and to seasonality, an increase reflected in maintenance and current repair works (+14.6%), in capital repair works (+7.9%) and in new construction works (+3.8%).

By construction objects, rises were recorded for non-residential buildings (+17.6%) and for residential buildings (+5.4%). The engineering works were down 0.1%.

### Construction works indices

- percentages -

		SEPTEMBER 2022 compared to:		1.I-30.IX.2022/ 1.I-30.IX.2021
		AUGUST 2022	SEPTEMBER 2021	
<b>Constructions – total</b>	<b>G</b>	108.2	126.4	108.9
	<b>S</b>	103.3	127.2	106.6
- by structure elements:				
New constructions	G	110.1	118.9	105.8
	S	103.8	120.2	103.8
Capital repairs	G	104.2	169.5	112.9
	S	97.7	166.5	107.9
Maintenance and current repairs	G	105.0	135.0	117.1
	S	96.4	135.4	114.6
- by construction objects:				
Residential buildings	G	103.6	99.7	104.0
	S	97.6	100.8	105.4
Non-residential buildings	G	107.0	138.1	119.4
	S	95.6	139.2	117.6
Engineering works	G	111.4	137.3	105.4
	S	104.5	136.9	99.9

G = gross series; S = adjusted series according to the number of working days and to seasonality

[The table data in xls format](#)

#### Additional information:

- The **construction volume indices** are determined by deflating the value data with the construction cost indices by structure element and by construction object. The construction volume indices are calculated for the overall construction branch (section F of NACE Rev. 2), by structure element (new construction works, capital repair works, maintenance and current repair works) and by construction object (residential buildings, non-residential buildings and engineering works).
- The construction works indices overall are calculated as a weighted arithmetic mean of indices by structure element or of indices by construction object.
- Beside the gross series of construction volume indices, **indices that are adjusted by number of working days and seasonality** are also calculated on a monthly basis, through the **regressive method**, using the **JDEMETRA+ version 2.2.0** software package (**the TRAMO/SEATS method**), a method recommended by the European regulations concerning short-term indicators (Council Regulation No 1165/1998).

For the correct interpretation of the indicators, please see the [Methodological Notes attached to the press release on the homepage](#).

For additional information, please see the TEMPO online database of the NIS (the data for September 2022 will be available on November 17, 2022) and the Monthly Statistical Bulletin (date of issue November 24, 2022).

For comparative data at EU level, please see the Eurostat press release to be issued on Thursday, November 17, 2022 at the address <http://ec.europa.eu/eurostat/web/main>.

The next issue of the press release will be on Monday, December 19, 2022.

Press release archive: <http://www.insse.ro/cms/en/comunicate-de-presa-view>

#### Communication Directorate

E-mail: [birouipresa@insse.ro](mailto:birouipresa@insse.ro)

Tel: +4021 3181869