

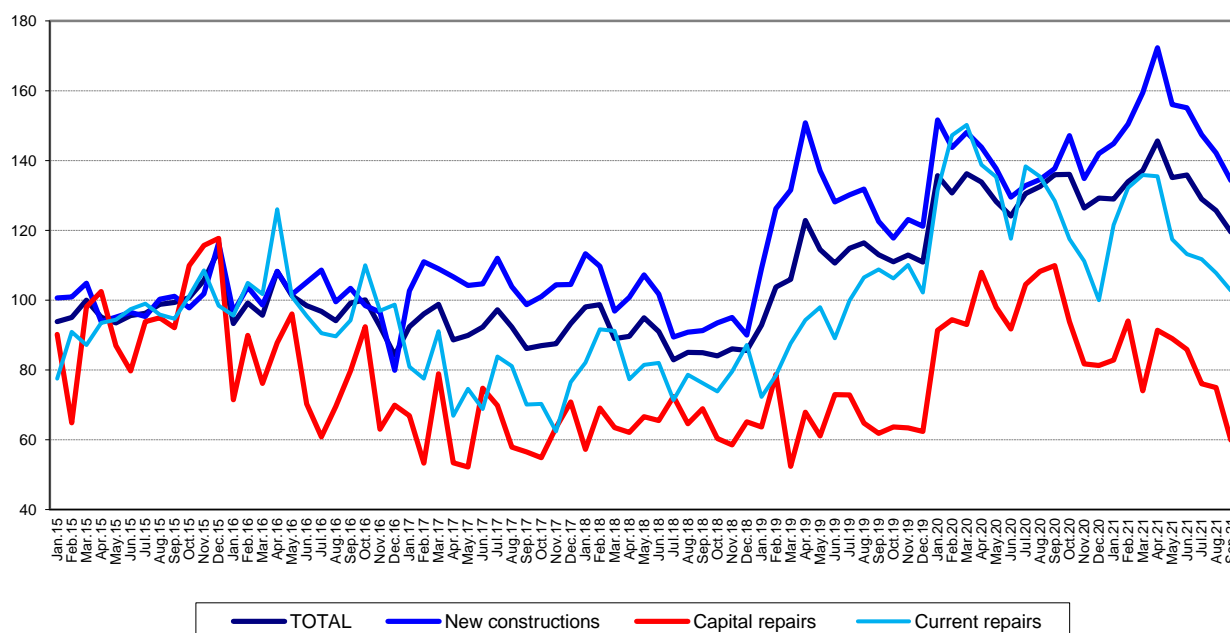
Domain: Construction

## CONSTRUCTION WORKS IN SEPTEMBER 2021

- In September 2021, the volume of construction works decreased, as gross series, by 0.7% compared to the previous month and was down 5.0% as adjusted series according to the number of working days and to seasonality.
- Compared to the corresponding month of the previous year, the volume of construction works fell, as gross series, by 14.3% and was down 12.1% as adjusted series according to the number of working days and to seasonality.
- Compared to the 1.I-30.IX.2020 period, in the 1.I-30.IX.2021 period, the volume of construction works increased, as gross series, by 0.4% and rose, as adjusted series according to the number of working days and to seasonality, by 0.3%.

### Monthly evolution of construction works, by structure elements, according to NACE Rev. 2 - January 2015-September 2021 - (adjusted series according to the number of working days and to seasonality)

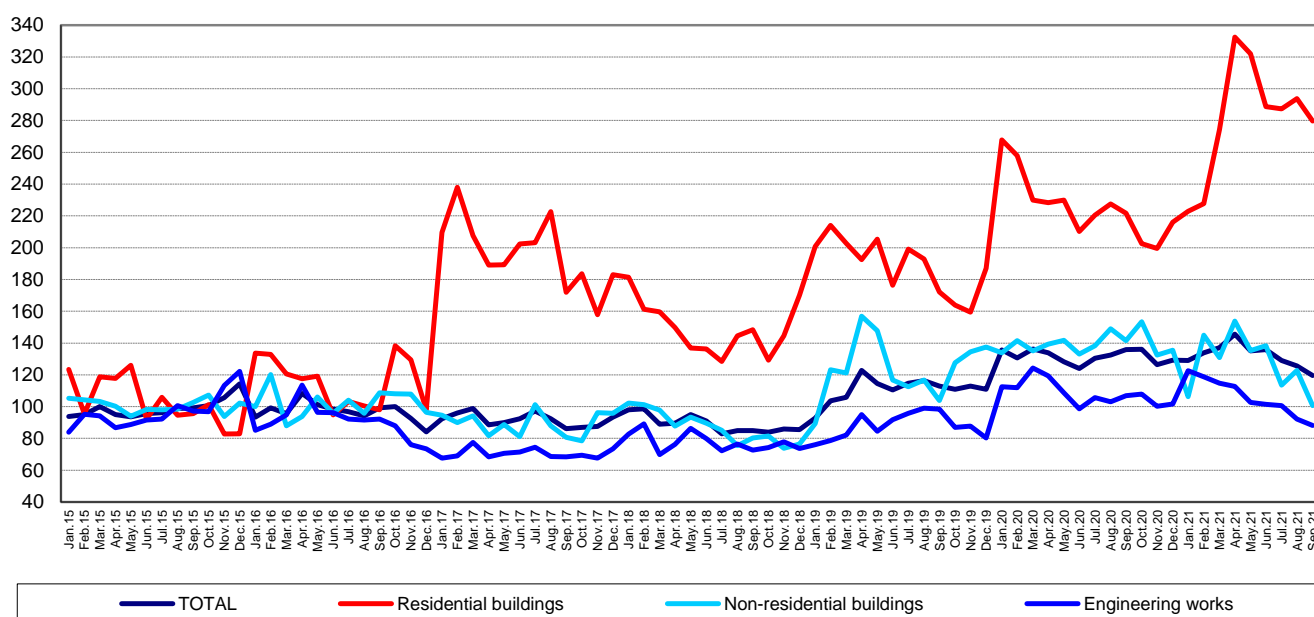
- 2015=100 -



[The graph data in xls format](#)

**Monthly evolution of construction works, by construction objects, according to NACE Rev. 2**  
**- January 2015-September 2021 -**  
**(adjusted series according to the number of working days and to seasonality)**

- 2015=100 -



[The graph data in xls format](#)

#### September 2021 compared to August 2021

The volume of construction works decreased, as gross series, by 0.7%, a decrease reflected in capital repair works (-15.3%). The new construction works remained at the same level, and the maintenance and current repair works rose by 3.3%.

By construction objects, a drop was reported for non-residential buildings (-7.8%). Rises were recorded for engineering works (+2.0%) and residential buildings (+1.9%).

The volume of construction works decreased, as adjusted series according to the number of working days and to seasonality, by 5.0%, a decrease reflected in capital repair works (-20.0%), new construction works (-5.5%) and maintenance and current repair works (-4.8%).

By construction objects, the volume of construction works dropped for non-residential buildings (-18.0%), residential buildings (-4.8%) and engineering works (-4.2%).

#### September 2021 compared to September 2020

The volume of construction works fell overall, as gross series, by 14.3%. By structure elements, drops were reported for capital repair works (-46.5%), maintenance and current repair works (-22.0%) and new constructions works (-5.0%).

By construction objects, the volume of construction works decreased for non-residential buildings (-29.5%) and engineering works (-20.8%). The residential buildings rose by 25.2%.

The volume of construction works decreased overall, as adjusted series according to the number of working days and to seasonality, by 12.1%. By structure elements, drops were reported for capital repair works (-45.5%), maintenance and current repair works (-20.0%) and new construction works (-2.5%).

By construction objects, the volume of construction works dropped for non-residential buildings (-28.8%) and engineering works (-17.4%). The residential buildings were up 26.3%.

### The 1.I-30.IX.2021 period compared to the 1.I-30.IX.2020 period

The volume of construction works increased overall, as gross series, by 0.4%. By structure elements, a rise was recorded for new construction works (+9.4%). Drops were reported for capital repair works (-21.7%) and maintenance and current repair works (-12.8%).

By construction objects, a rise was recorded for residential buildings (+27.8%). The non-residential buildings fell by 9.3% and the engineering works dropped 5.8%.

The volume of construction works rose, as adjusted series according to the number of working days and to seasonality, by 0.3%, a rise reflected in new construction works (+8.1%). The capital repair works were down 19.1%, and the maintenance and current repair works dropped 11.8%.

By construction objects, a rise was reported for residential buildings (+20.8%). The non-residential buildings fell by 8.5% and the engineering works were down 3.7%.

#### Construction works indices

- percentages -

		SEPTEMBER 2021 compared to:		1.I-30.IX.2021/ 1.I-30.IX.2020
		AUGUST 2021	SEPTEMBER 2020	
<b>Constructions – total</b>	<b>G</b>	<b>99.3</b>	<b>85.7</b>	<b>100.4</b>
	<b>S</b>	<b>95.0</b>	<b>87.9</b>	<b>100.3</b>
- by structure elements:				
New constructions	G	100.0	95.0	109.4
	S	94.5	97.5	108.1
Capital repairs	G	84.7	53.5	78.3
	S	80.0	54.5	80.9
Maintenance and current repairs	G	103.3	78.0	87.2
	S	95.2	80.0	88.2
- by construction objects:				
Residential buildings	G	101.9	125.2	127.8
	S	95.2	126.3	120.8
Non-residential buildings	G	92.2	70.5	90.7
	S	82.0	71.2	91.5
Engineering works	G	102.0	79.2	94.2
	S	95.8	82.6	96.3

G = gross series; S = adjusted series according to the number of working days and to seasonality

[The table data in xls format](#)

#### Additional information:

- The **construction volume indices** are determined by deflating the value data with the construction cost indices by structure element and by construction object. The construction volume indices are calculated for the overall construction branch (section F of NACE Rev. 2), by structure element (new construction works, capital repair works, maintenance and current repair works) and by construction object (residential buildings, non-residential buildings and engineering works).
- The construction works indices overall are calculated as a weighted arithmetic mean of indices by structure element or of indices by construction object.
- Beside the gross series of construction volume indices, **indices that are adjusted by number of working days and seasonality** are also calculated on a monthly basis, through the **regressive method**, using the **JDEMETRA+ version 2.2.0** software package (**the TRAMO/SEATS method**), a method recommended by the European regulations concerning short-term indicators (Council Regulation No 1165/1998).

For the correct interpretation of the indicators, please see the [Methodological Notes attached to the press release on the homepage](#).

For additional information, please see the TEMPO online database of the NIS (the data for September 2021 will be available on November 16, 2021) and the Monthly Statistical Bulletin (date of issue November 24, 2021).

For comparative data at EU level, please see the Eurostat press release to be issued on Wednesday, November 17, 2021 at the address <http://ec.europa.eu/eurostat/web/main>.

The next issue of the press release will be on Wednesday, December 15, 2021.

Press release archive: <http://www.insse.ro/cms/en/comunicate-de-presa-view>

**Communication Directorate**

E-mail: [birou presa@insse.ro](mailto:birou presa@insse.ro)

Tel: +4021 3181869