

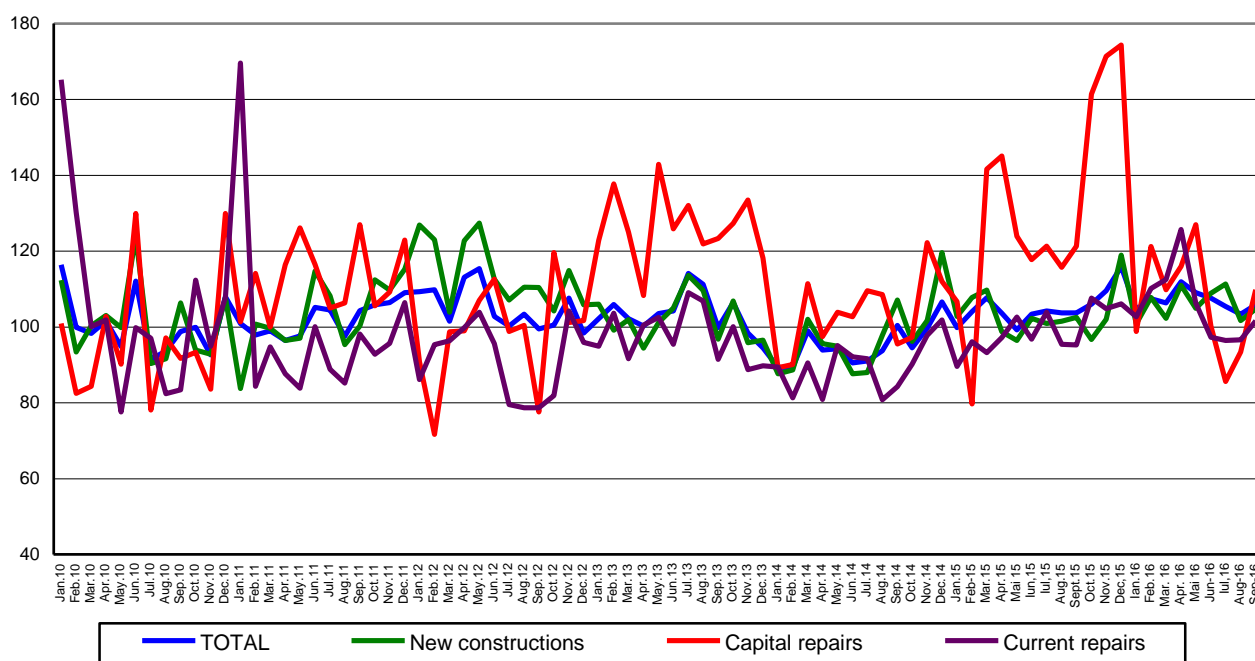
Domain: Construction

IN SEPTEMBER 2016, THE CONSTRUCTION WORKS INCREASED BY 0.7% COMPARED TO SEPTEMBER 2015

- In September 2016, the volume of construction works increased compared to the previous month as gross series by 18.5% and as adjusted series by the number of working days and by seasonality by 2.4%.
- Compared to the corresponding month of the previous year, the volume of construction works increased, both as gross series and as adjusted series by the number of working days and by seasonality by 0.7% and by 2.0%, respectively.
- In the period 1.I-30.IX.2016, the volume of construction works increased, compared to the period 1.I-30.IX.2015, both as gross series and as adjusted series by the number of working days and by seasonality by 1.9% and by 3.4%, respectively.

**Monthly evolution of construction works, by structure elements,
according to CANE Rev. 2
- January 2010 – September 2016-
(adjusted series according to the number of working days and to seasonality**

- 2010=100 -

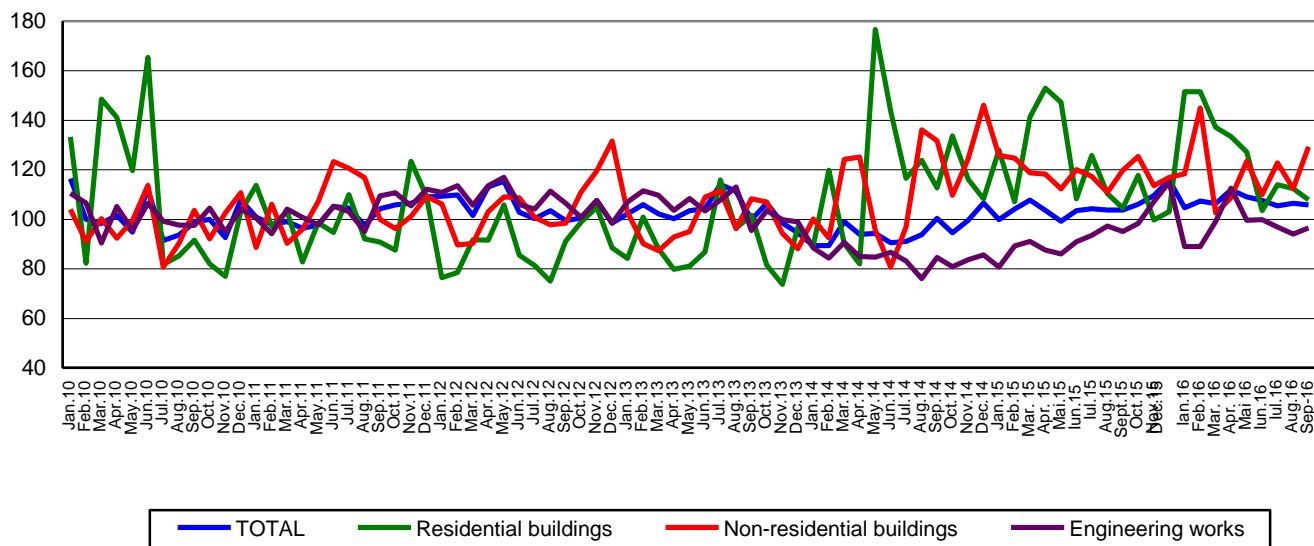


Graph data in xls format

Nr. / 13 iulie 2016

Monthly evolution of construction works, by construction objects,
according to CANE Rev. 2
- January 2010 – September 2016 -
(adjusted series according to the number of working days and to seasonality)

- 2010=100 -



[Graph data in xls format](#)

September 2016 compared to August 2016

The volume of construction works increased, as gross series, by 18.5%, increase highlighted in the following structure elements: capital repairs works of 28.5%, maintenance and current repairs works of 24.6% and new construction works of 14.6%.

By construction objects, there were rises in non-residential buildings of 33.2%, in engineering works of 13.2% and in residential buildings of 10.3%.

The volume of construction works increased, as adjusted series by the number of working days and by seasonality, by 2.4%, increase highlighted in the following structure elements: capital repairs works of 17.6%, maintenance and current repairs works of 5.2% and new construction works of 3.0%. By construction objects, there were rises in non-residential buildings of 14.9% and in engineering works of 2.6%. There were drops of 4.0% in residential buildings.

September 2016 compared to September 2015

The volume of construction works increased, as gross series, by 0.7%. By structure elements, there were rises in maintenance and current repairs works of 3.1% and in new construction works of 2.1%. There were drops in capital repairs works of 10.2%.

By construction objects, the volume of construction works increased in non-residential buildings by 7.6% and in residential buildings of 2.7%. There were drops of 3.1% in engineering works.

The volume of construction works increased, as adjusted series by the number of working days and by seasonality, by 2.0%. By structure elements, there were rises as follows: in maintenance and current repairs works of 6.7% and in new construction works of 2.2%. There were drops of 9.4% in capital repairs works.

By construction objects, the volume of construction works increased as follows: in non-residential buildings by 7.8%, in residential buildings by 3.2% and in engineering works by 1.5%.

Period 1.I.-30.IX.2016 compared to period 1.I.-30.IX.2015

The volume of construction works increased per total, as gross series, by 1.9%. By structure elements, there were rises in new construction works of 4.5% and in maintenance and current repairs works of 3.9%. The capital repair works decreased by 13.8%.

By construction objects, there were rises as follows: in residential buildings of 2.8%, in engineering works of 2.3% and in non-residential buildings of 0.8%.

The volume of construction works increased per total, as adjusted series by the number of working days and by seasonality, by 3.4%.

By structure elements, there were rises in maintenance and current repairs works and in new construction works of 9.1% and of 3.4%, respectively. The capital repair works decreased by 10.4%.

By construction objects, the volume of construction works increased in engineering works by 8.0%, in residential buildings by 1.1% and in non-residential buildings by 0.4%.

Construction works indices

- percentage-

		September 2016 compared to:		Period 1.I-30.IX.2016/ Period 1.I-30.IX.2015
		August 2016	September 2015	
Constructions - total	B	118.5	100.7	101.9
	S	102.4	102.0	103.4
- by structure elements:				
New constructions	B	114.6	102.1	104.5
	S	103.0	102.2	103.4
Capital repairs	B	128.5	89.8	86.2
	S	117.6	90.6	89.6
Maintenance and current repairs	B	124.6	103.1	103.9
	S	105.2	106.7	109.1
- by construction objects:				
Residential buildings	B	110.3	102.7	102.8
	S	96.0	103.2	101.1
Non-residential buildings	B	133.2	107.6	100.8
	S	114.9	107.8	100.4
Engineering works	B	113.2	96.9	102.3
	S	102.6	101.5	108.0

B= gross series; S= adjusted series according to the number of working days and to seasonality;

[Graphic data in xls format](#)

For the correct interpretation of results, kindly see the [Methodological Note attached to the press release on the homepage](#).

For additional information, kindly see the statistical publication Monthly Statistical Bulletin (date of issue November 25, 2016) and the on line database TEMPO of INS (data for September 2016 will be available on November 14, 2016).

For comparable data with the other Member States of the European Union, kindly see the Eurostat press release, issued on Thursday, November 17, 2016 at the address: <http://ec.europa.eu/eurostat/web/main>

The next issue of the press release will be on Tuesday, December 13, 2016.

The archive of the press releases: <http://www.insse.ro/cms/en/comunicate-de-presa-view>

The Directorate of Communication

e-mail: biroupresa@insse.ro

Tel: +4021 3181869