

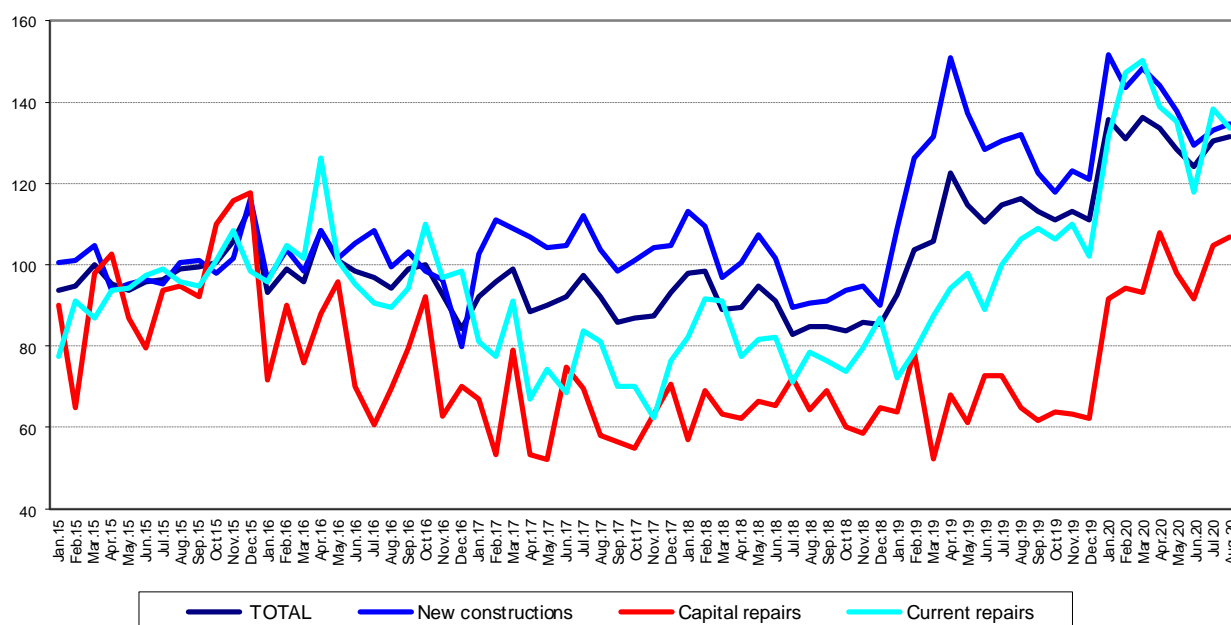
Domain: Construction

CONSTRUCTION WORKS IN AUGUST 2020

- In August 2020, the volume of construction works increased, as gross series, by 1.9% compared to the previous month and was up 0.9% as adjusted series according to the number of working days and to seasonality.
- Compared to the corresponding month of the previous year, the volume of construction works rose both as gross series and as adjusted series according to the number of working days and to seasonality, by 12.3% and by 13.2%, respectively.
- Compared to the 1.I-31.VIII.2019 period, in the 1.I-31.VIII.2020 period, the volume of construction works increased, as gross series, by 17.3% and rose, as adjusted series according to the number of working days and to seasonality, by 19.2%.

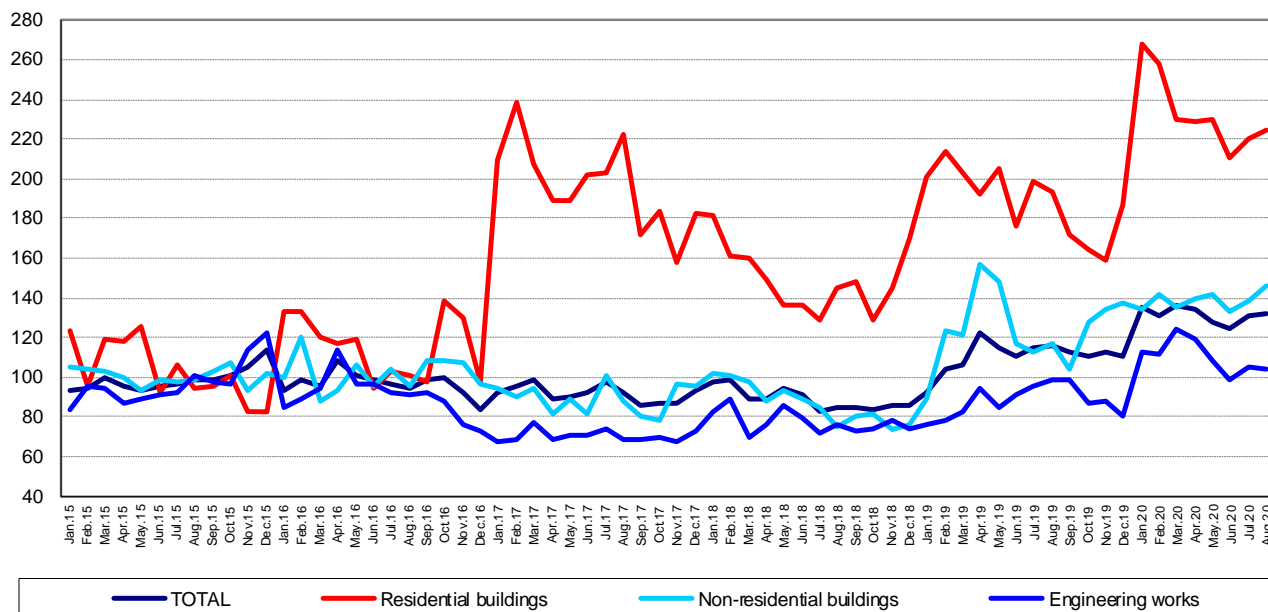
Monthly evolution of construction works, by structure elements, according to NACE Rev. 2 - January 2015-August 2020 - (adjusted series according to the number of working days and to seasonality)

- 2015=100 -


[The graph data in xls format](#)

**Monthly evolution of construction works, by construction objects, according to NACE Rev. 2
- January 2015-August 2020 -
(adjusted series according to the number of working days and to seasonality)**

- 2015=100 -



[The graph data in xls format](#)

August 2020 compared to July 2020

The volume of construction works increased overall, **as gross series**, by 1.9%, an increase reflected in capital repair works (+5.2%), in new construction works (+1.6%) and in maintenance and current repair works (+1.3%).

By construction objects, the **gross series** shows rises in the volume of non-residential buildings (+3.1%), residential buildings (+1.9%) and engineering works (+1.3%).

The volume of construction works increased overall, **as adjusted series according to the number of working days and to seasonality**, by 0.9%, an increase reflected in capital repair works (+2.0%) and in new construction works (+1.3%). The maintenance and current repair works dropped 3.4%.

By construction objects, the **adjusted series according to the number of working days and to seasonality** shows rises in the volume of non-residential buildings (+5.3%) and residential buildings (+1.9%). The volume of engineering works decreased by 1.6%.

August 2020 compared to August 2019

The volume of construction works rose overall, **as gross series**, by 12.3%. By structure elements, rises were reported for capital repair works (+67.3%), for maintenance and current repair works (+26.7%) and for new construction works (+1.2%).

By construction objects, the **gross series** shows increases in the volume of non-residential buildings (+24.3%), residential buildings (+16.7%) and engineering works (+4.3%).

The volume of construction works increased, **as adjusted series according to the number of working days and to seasonality**, by 13.2%. By structure elements, rises were reported for capital repair works (+64.5%), for maintenance and current repair works (+25.5%) and for new construction works (+2.0%).

By construction objects, the **adjusted series according to the number of working days and to seasonality** shows increases in the volume of non-residential buildings (+24.9%), residential buildings (+16.5%) and engineering works (+5.0%).

The 1.I-31.VIII.2020 period compared to the 1.I-31.VIII.2019 period

The volume of construction works increased, **as gross series**, by 17.3%. By structure elements, rises were reported for capital repair works (+51.7%), for maintenance and current repair works (+44.3%) and for new construction works (+5.6%).

By construction objects, **as gross series**, increases were reported as follows: engineering works (+21.9%), residential buildings (+17.2%) and non-residential buildings (+10.8%).

The volume of construction works rose overall, **as adjusted series according to the number of working days and to seasonality**, by 19.2%, an increase reflected in the volume of maintenance and current repair works (+50.5%), capital repair works (+47.5%) and new construction works (+7.4%).

By construction objects, the **adjusted series according to the number of working days and to seasonality** shows rises in the volume of engineering works (+25.8%), residential buildings (+18.1%) and non-residential buildings (+12.7%).

Construction works indices

- percentages -

Construction works indices		August 2020 in % compared to:		1.I-31.VIII.2020/ 1.I-31.VIII.2019
		July 2020	August 2019	
Constructions – total	G	101.9	112.3	117.3
	S	100.9	113.2	119.2
- by structure elements:				
New constructions	G	101.6	101.2	105.6
	S	101.3	102.0	107.4
Capital repairs	G	105.2	167.3	151.7
	S	102.0	164.5	147.5
Maintenance and current repairs	G	101.3	126.7	144.3
	S	96.6	125.5	150.5
- by construction objects:				
Residential buildings	G	101.9	116.7	117.2
	S	101.9	116.5	118.1
Non-residential buildings	G	103.1	124.3	110.8
	S	105.3	124.9	112.7
Engineering works	G	101.3	104.3	121.9
	S	98.4	105.0	125.8

G = gross series; S = adjusted series according to the number of working days and to seasonality

[The table data in xls format](#)

Additional information:

- The **construction volume indices** are determined by deflating the value data with the construction cost indices by structure element and by construction object. The construction volume indices are calculated for the overall construction branch (section F of NACE Rev. 2), by structure element (new construction works, capital repair works, maintenance and current repair works) and by construction object (residential buildings, non-residential buildings and engineering works).
- The construction works indices overall are calculated as a weighted arithmetic mean of indices by structure element or of indices by construction object.

- Beside the gross series of construction volume indices, **indices that are adjusted by number of working days and seasonality** are also calculated on a monthly basis, through the **regressive method**, using the **JDEMETRA+ version 2.0** software package (**the TRAMO/SEATS method**), a method recommended by the European regulations concerning short-term indicators (Council Regulation No 1165/1998).

For the correct interpretation of the indicators, please see the [Methodological Notes attached to the press release on the homepage](#).

For additional information, please see the TEMPO online database of the NIS (the data for August 2020 will be available on October 16, 2020) and the Monthly Statistical Bulletin (date of issue October 26, 2020).

For comparative data at EU level, please see the Eurostat press release to be issued on Monday, October 19, 2020 at the address <https://ec.europa.eu/eurostat/web/main>.

The next issue of the press release will be on Monday, November 16, 2020.

Press release archive: <https://insse.ro/cms/en/comunicate-de-presa-view>

Communication Directorate

E-mail: biroupresa@insse.ro

Tel: +4021 3181869