

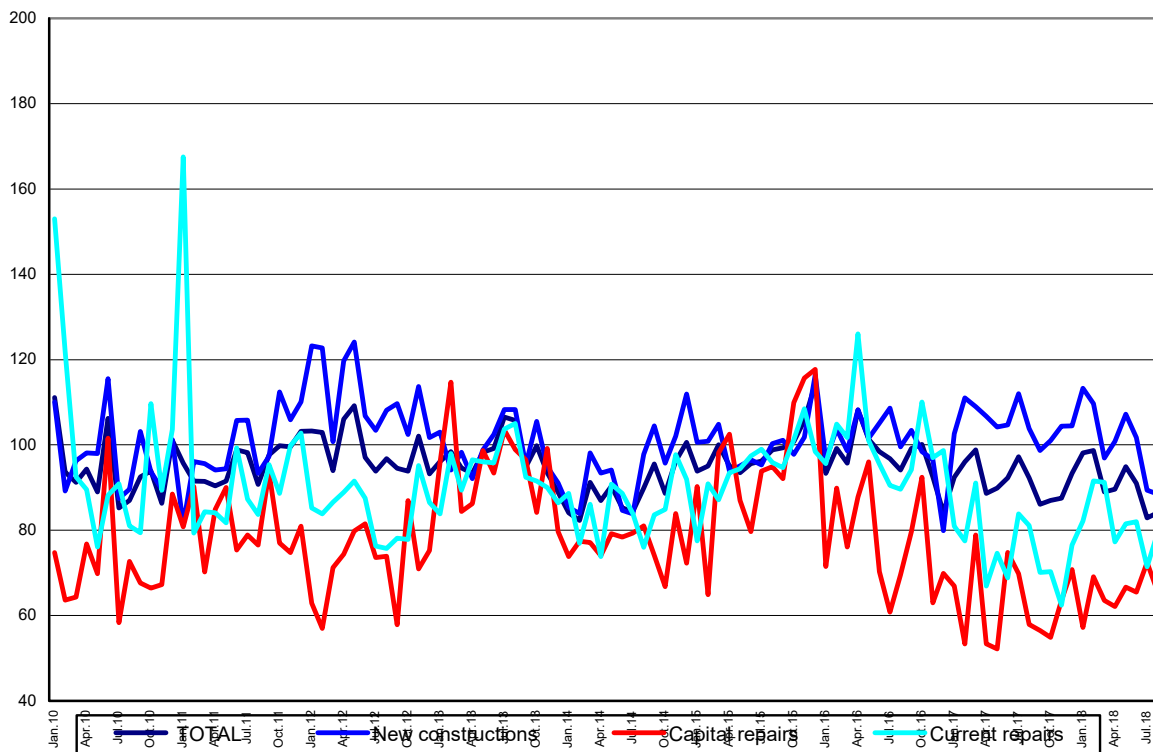
Domain: Construction

CONSTRUCTION WORKS IN AUGUST 2018

- Compared to the previous month, in August 2018, the volume of construction works increased, as gross series, by 5.0% and rose, as adjusted series according to the number of working days and to seasonality, by 1.4%.
- Compared to the corresponding month of the previous year, the volume of construction works dropped both as gross series and as adjusted series according to the number of working days and to seasonality, by 10.3% and by 8.9%, respectively.
- Compared to the 1.I-31.VIII.2017 period, in the 1.I-31.VIII.2018 period, the volume of construction works decreased, as gross series, by 4.6% and fell, as adjusted series according to the number of working days and to seasonality, by 2.6%.

**Monthly evolution of construction works, by structure elements,
according to CANE Rev. 2
- January 2010-August 2018 -
(adjusted series according to the number of working days and to seasonality)**

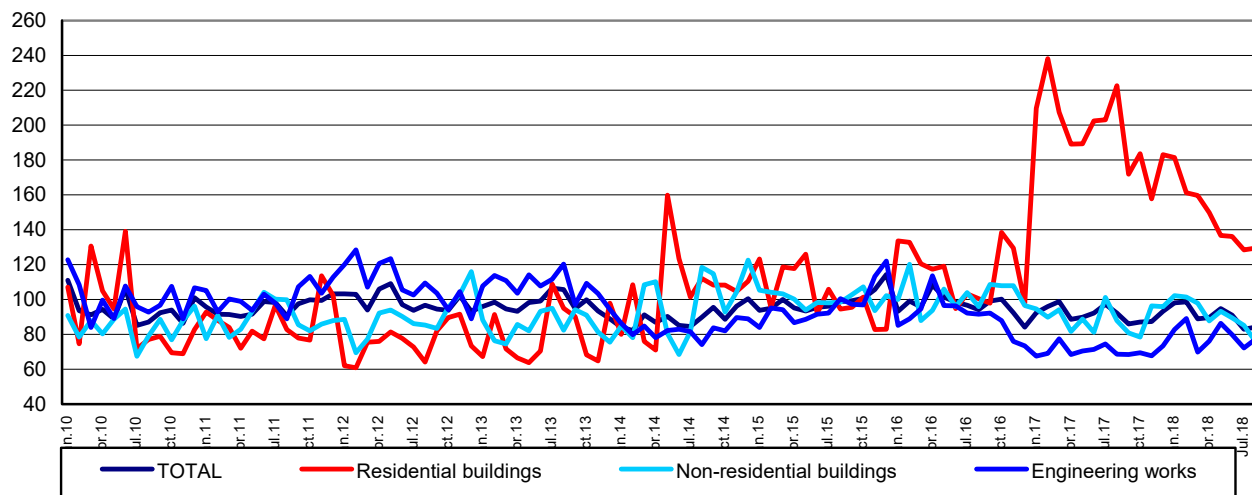
- 2015=100 -



Graph data in xls format

**Monthly evolution of construction works, by construction objects,
according to CANE Rev. 2
- January 2010-August 2018 -**
(adjusted series according to the number of working days and to seasonality)

- 2015=100 -



[Graph data in xls format](#)

August 2018 compared to July 2018

The volume of construction works increased, as gross series, by 5.0%, an increase reflected in maintenance and current repair works (+12.8%) and in new construction works (+3.5%). A decrease of 1.0% was reported for capital repair works.

By construction objects, there were rises in engineering works (+15.3%) and in residential buildings (+2.3%). The non-residential buildings were down 11.1%.

The volume of construction works increased overall, as adjusted series according to the number of working days and to seasonality, by 1.4%, an increase reflected in maintenance and current repair works (+11.3%). There were drops in capital repair works (-9.5%) and in new construction works (-1.0%).

By construction objects, the volume of construction works rose in engineering works (+7.0%) and in residential buildings (+0.7%). The non-residential buildings were down 10.7%.

August 2018 compared to August 2017

The volume of construction works decreased overall, as gross series, by 10.3%, a decrease reflected in new construction works (-16.2%) and in maintenance and current repair works (-1.1%). There was a rise of 12.9% in capital repair works.

By construction objects, the volume of construction works dropped in residential buildings (-42.1%) and in non-residential buildings (-14.8%). The engineering works were up 12.7%.

The volume of construction works decreased, as adjusted series according to the number of working days and to seasonality, by 8.9%, a decrease reflected in new construction works (-14.7%) and in maintenance and current repair works (-2.1%). An increase of 13.2% was reported for capital repair works.

By construction objects, the volume of construction works dropped in residential buildings (-41.9%) and in non-residential buildings (-13.5%). The engineering works were up 12.6%.

The 1.I-31.VIII.2018 period compared to the 1.I-31.VIII.2017 period

The volume of construction works decreased overall, as gross series, by 4.6%, a decrease reflected in new construction works (-8.3%). There were rises in maintenance and current repair works (+5.2%) and in capital repair works (+2.2%).

By construction objects, there were drops in residential buildings (-31.0%) and in non-residential buildings (-0.1%). There was a rise of 9.6% in engineering works.

The volume of construction works decreased overall, as adjusted series according to the number of working days and to seasonality, by 2.6%. By structure elements, there was a drop of 5.4% in new construction works. The maintenance and current repair works rose by 5.1%, and the capital repair works were up 2.9%.

By construction objects, the volume of construction works dropped in residential buildings (-28.8%). Increases were reported for engineering works (+11.7%) and for non-residential buildings (+1.9%).

Construction works indices

- percentages -

		August 2018 compared to:		1.I-31.VIII.2018/ 1.I-31.VIII.2017
		July 2018	August 2017	
Constructions - total	G	105.0	89.7	95.4
	S	101.4	91.1	97.4
- by structure elements:				
New constructions	G	103.5	83.8	91.7
	S	99.0	85.3	94.6
Capital repairs	G	99.0	112.9	102.2
	S	90.5	113.2	102.9
Maintenance and current repairs	G	112.8	98.9	105.2
	S	111.3	97.9	105.1
- by construction objects:				
Residential buildings	G	102.3	57.9	69.0
	S	100.7	58.1	71.2
Non-residential buildings	G	88.9	85.2	99.9
	S	89.3	86.5	101.9
Engineering works	G	115.3	112.7	109.6
	S	107.0	112.6	111.7

G = gross series; S = adjusted series according to the number of working days and to seasonality

[Table data in xls format](#)

Additional information:

IMPORTANT! In order to show the changes in the structure of the economy, starting with the publication of the data for the reference month **January 2018**, the base year used in the calculation of construction works indices was changed **from 2010 to 2015**. The change in the base year also involves the updating of the weighting system; the changes in the weighting system reflect the structural changes that occurred in the activities of the national economy. These changes led to the adequate recalculation and revision of the previously published data series. These changes will appear in press releases, statistical publications produced by the NIS and in the TEMPO online database.

The **construction volume indices** are determined by deflating the value data with the construction cost indices by structure element and by construction object. The construction volume indices are calculated for the overall construction branch (section F of CANE Rev. 2), by structure element (new construction works, capital repair works, maintenance and current repair works) and by construction object (residential buildings, non-residential buildings and engineering works).

The construction works indices overall are calculated as a weighted arithmetic mean of indices by structure element or of indices by construction object.

Beside the gross series of construction volume indices, **indices that are adjusted by number of working days and seasonality** are also calculated on a monthly basis, through the **regressive method**, a method recommended by the European regulations concerning short-term indicators (Council Regulation No 1165/1998).

For the correct interpretation of the indicators, please see the [Methodological Notes attached to the press release on the homepage](#).

For additional information, please see the statistical publication *Monthly Statistical Bulletin* (date of issue October 24, 2018) and the TEMPO online database of the NIS (the data for August 2018 will be available on October 15, 2018).

For comparable data with the other Member States of the European Union, please see the Eurostat press release issued on Wednesday, October 17, 2018 at the address <http://ec.europa.eu/eurostat/web/main>.

The next issue of the press release will be on Wednesday, November 14, 2018.

Press release archive: <http://www.insse.ro/cms/en/comunicate-de-presa-view>

Communication Directorate

E-mail: birou presa@insse.ro

Tel: +4021 3181869