

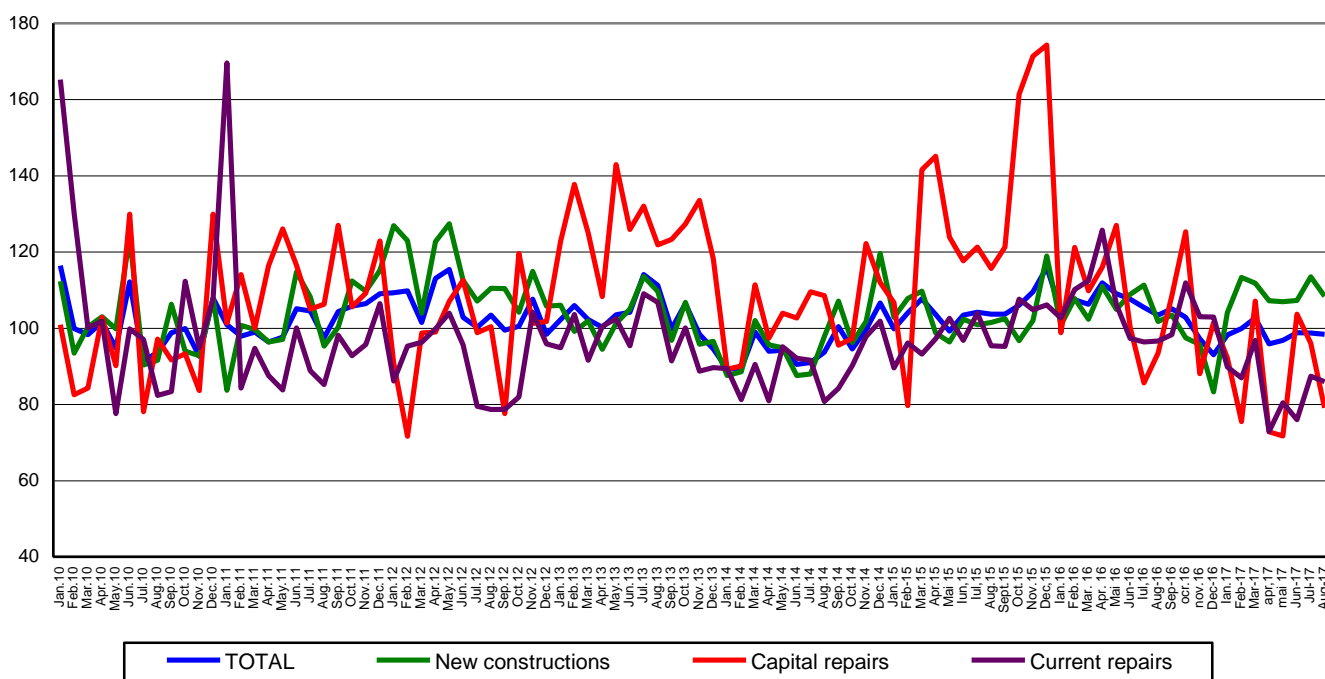
Domain: Construction

## IN AUGUST 2017, THE VOLUME OF CONSTRUCTION WORKS<sup>1</sup> DECREASED BY 0.3% COMPARED TO THE PREVIOUS MONTH

- Compared to the previous month, in August 2017, the volume of construction works decreased both as gross series and as adjusted series according to the number of working days and to seasonality, by 0.1% and by 0.3%, respectively.
- Compared to the corresponding month of the previous year, the volume of construction works fell both as gross series and as adjusted series according to the number of working days and to seasonality, by 0.5% and by 4.8%, respectively.
- Compared to the period 1.I-31.VIII.2016, in the period 1.I- 31.VIII.2017, the volume of construction works decreased both as gross series and as adjusted series according to the number of working days and to seasonality, by 4.9% and by 7.7%, respectively.

**Monthly evolution of construction works, by structure elements,  
according to CANE Rev. 2  
- January 2010-August 2017 -  
(adjusted series according to the number of working days and to seasonality)**

- 2010=100 -

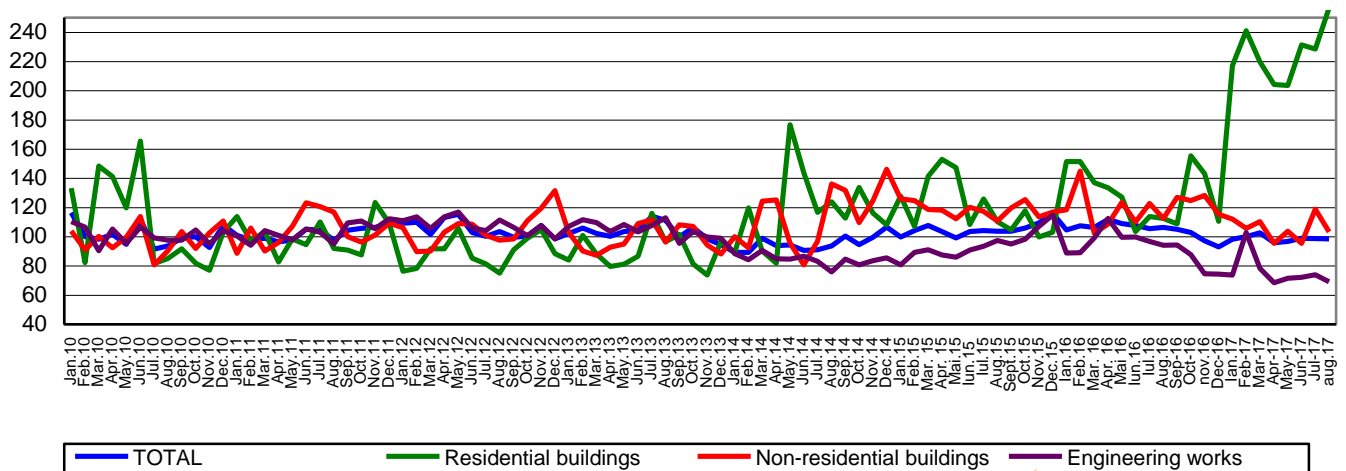


[Graph data in xls format](#)

<sup>1</sup> Adjusted series according to the number of working days and to seasonality

**Monthly evolution of construction works, by construction objects,  
according to CANE Rev. 2  
- January 2010-August 2017 -  
(adjusted series according to the number of working days and to seasonality)**

- 2010=100 -



[Graph data in xls format](#)

#### August 2017 compared to July 2017

The volume of construction works decreased, as gross series, by 0.1%, a decrease highlighted in the following structure elements: in capital repair works (-4.5%) and in maintenance and current repair works (-2.1%). The new construction works increased by 1.1%.

By construction objects, there were drops of 11.8% in non-residential buildings and 0.2% in engineering works. There was a rise of 14.0% in residential buildings.

The volume of construction works decreased, as adjusted series according to the number of working days and to seasonality, by 0.3%, a decrease highlighted in the following structure elements: in capital repair works (-17.6%), in new construction works (-4.5%) and in maintenance and current repair works (-1.6%).

By construction objects, the volume of construction works fell in non-residential buildings (-13.0%) and in engineering works (-6.5%). There was a rise of 12.2% in residential buildings.

#### August 2017 compared to August 2016

The volume of construction works decreased, as gross series, by 0.5%. By structure elements, there were drops in capital repair works (-17.2%) and in maintenance and current repair works (-12.0%). The new construction works increased by 6.4%.

By construction objects, the volume of construction works fell in engineering works (-23.8%) and in non-residential buildings (-8.1%). There was a rise of 123.4% in residential buildings.

The volume of construction works decreased, as adjusted series according to the number of working days and to seasonality, by 4.8%. By structure elements, there were drops in capital repair works (-15.3%) and in maintenance and current repair works (-10.9%). The new construction works increased by 6.6%.

By construction objects, the volume of construction works decreased in engineering works (-26.4%) and in non-residential buildings (-8.1%). There was a rise of 128.3% in residential buildings.

#### The period 1.I-31.VIII.2017 compared to the period 1.I-31.VIII.2016

The volume of construction works decreased overall, as gross series, by 4.9%. By structure elements, there were drops in maintenance and current repair works (-20.6%) and in capital repair works (-17.1%). The new construction works increased by 3.2%.

By construction objects, there were drops in engineering works (-25.5%) and in non-residential buildings (-10.0%). There was a rise of 85.7% in residential buildings.

The volume of construction works decreased overall, as adjusted series according to the number of working days and to seasonality, by 7.7%. By structure elements, there were falls in maintenance and current repair works (-20.2%) and in capital repair works (-18.1%). The new construction works increased by 2.8%. By construction objects, the volume of construction works decreased in engineering works (-25.7%) and in non-residential buildings (-10.4%). The volume of construction works increased in residential buildings by 75.0%.

#### Construction works indices

- percentage -

		AUGUST 2017 compared to:		The period 1.I-31.VIII.2017/ the period 1.I-31.VIII.2016
		JULY 2017	AUGUST 2016	
<b>Constructions - total</b>	<b>G</b>	<b>99.9</b>	<b>99.5</b>	<b>95.1</b>
	<b>S</b>	<b>99.7</b>	<b>95.2</b>	<b>92.3</b>
- by structure elements:				
New constructions	G	101.1	106.4	103.2
	S	95.5	106.6	102.8
Capital repairs	G	95.5	82.8	82.9
	S	82.4	84.7	81.9
Maintenance and current repairs	G	97.9	88.0	79.4
	S	98.4	89.1	79.8
- by construction objects:				
Residential buildings	G	114.0	223.4	185.7
	S	112.2	228.3	175.0
Non-residential buildings	G	88.2	91.9	90.0
	S	87.0	91.9	89.6
Engineering works	G	99.8	76.2	74.5
	S	93.5	73.6	74.3

G = gross series; S = adjusted series according to the number of working days and to seasonality

[Table data in xls format](#)

#### Additional information:

The **value of construction works** includes new construction works, capital repair works and maintenance and current repair works carried out by units with main activity in the field (section F of CANE Rev. 2).

The **volume indices in constructions** are determined by deflating the value data with the cost indices in constructions, by structure elements and by construction objects.

For the correct interpretation of results, please see the [Methodological Note attached to the press release on the homepage](#).

For additional information, please see the statistical publication *Monthly Statistical Bulletin* (date of issue October 27, 2017) and the TEMPO online database of the NIS (the data for August 2017 will be available on October 13, 2017).

For comparable data with the other Member States of the European Union, please see the Eurostat press release issued on Wednesday, October 18, 2017 at the address <http://ec.europa.eu/eurostat/web/main>.

The next issue of the press release will be on Tuesday, November 14, 2017.

Press release archive: <http://www.insse.ro/cms/en/comunicate-de-presa-view>

#### Communication Directorate

E-mail: [birou presa@insse.ro](mailto:birou presa@insse.ro)

Tel: +4021 3181869