

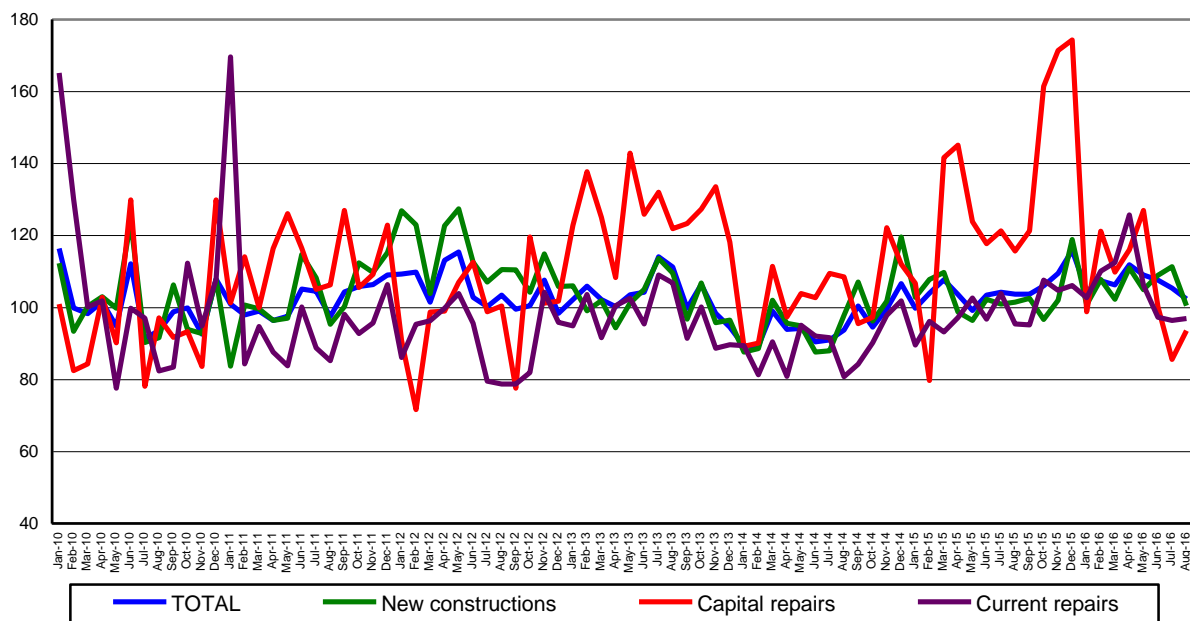
Domain: Construction

IN AUGUST 2016, CONSTRUCTION WORKS DECREASED BY 5.3% COMPARED TO AUGUST 2015

- In August 2016, the volume of construction works increased compared to the previous month as gross series by 1.0% and as adjusted series by the number of working days and by seasonality decreased by 2.8%.
- Compared to the corresponding month of the previous year, the volume of construction works decreased, both as gross series and as adjusted series by the number of working days and by seasonality, by 5.3% and by 1.2%, respectively.
- In the period 1.I-31.VIII.2016, the volume of construction works increased, compared to the period 1.I-31.VIII.2015, both as gross series and as adjusted series by the number of working days and by seasonality, by 2.0% and by 3.5%, respectively.

**Monthly evolution of construction works, by structure elements,
according to CANE Rev. 2
- January 2010-August 2016 -
(adjusted series according to the number of working days and to seasonality)**

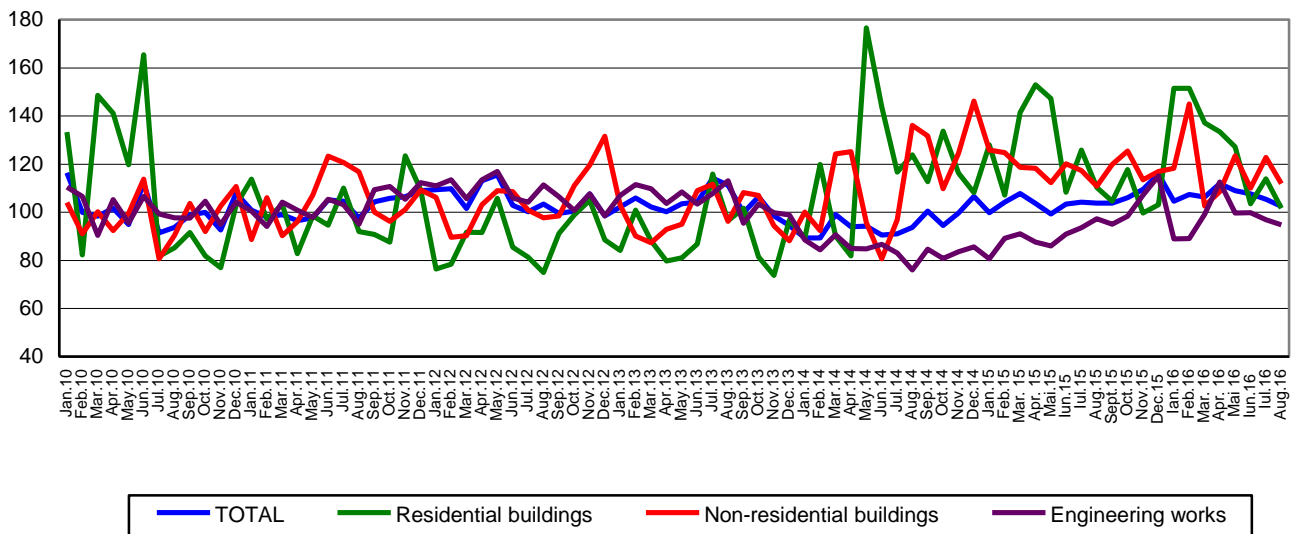
- 2010=100 -



Graph data in xls format

**Monthly evolution of construction works, by construction objects,
according to CANE Rev. 2
- January 2010-August 2016 -
(adjusted series according to the number of working days and to seasonality)**

- 2010=100 -



[Graph data in xls format](#)

August 2016 compared to July 2016

The volume of construction works increased, as gross series, by 1.0%, increase highlighted by structure elements in capital repairs works of 34.4% and in maintenance and current repairs works of 0.7%. There was a drop of 3.0% in new construction works.

By construction objects, there was a rise of 7.9% in engineering works. Residential buildings and non-residential buildings decreased by 10.5% and by 6.7%, respectively.

The volume of construction works decreased, as adjusted series by the number of working days and by seasonality, by 2.8%, decrease highlighted in new construction works of 9.7%. There were rises of 9.4% in capital repairs works and of 0.5% in maintenance and current repairs works.

By construction objects, there were drops of 10.7% in residential buildings, of 8.8% in non-residential buildings and of 2.2% in engineering works.

August 2016 compared to August 2015

The volume of construction works decreased, as gross series, by 5.3%. By structure elements, there were drops of 24.6% in capital repairs works, of 5.3% in maintenance and current repairs works, and of 1.0% in new construction works.

By construction objects, the volume of construction works decreased by 7.1% in engineering works, by 2.8% in residential buildings and by 2.3% in non-residential buildings.

The volume of construction works decreased, as adjusted series by the number of working days and by seasonality, by 1.2%. By structure elements, there were drops of 19.1% in capital repairs works and of 0.9% in new construction works. Maintenance and current repairs works increased by 1.5%.

By construction objects, the volume of construction works decreased by 7.9% in residential buildings and by 2.7% in engineering works. There was a rise of 0.9% in non-residential buildings.

Period 1.I-31.VIII.2016 compared to period 1.I-31.VIII.2015

The volume of construction works increased per total, as gross series, by 2.0%. By structure elements, there were rises in new construction works and in maintenance and current repairs works of 4.7% and of 4.1%, respectively. The capital repairs works decreased by 14.4%.

By construction objects, there were rises as follows: in engineering works of 3.5% and in residential buildings of 1.3%. There was a drop of 0.4% in non-residential buildings.

The volume of construction works increased per total, as adjusted series by the number of working days and by seasonality, by 3.5%.

By structure elements, there were rises in maintenance and current repairs works and in new construction works of 9.4% and of 3.4%, respectively. The capital repairs works decreased by 10.5%.

By construction objects, the volume of construction works increased in engineering works by 9.0%. There were drops in non-residential buildings and in residential buildings of 0.6% and of 0.1%, respectively.

Construction works indices

- percentage -

		AUGUST 2016 compared to:		Period 1.I-31.VIII.2016/ Period 1.I-31.VIII.2015
		JULY 2016	AUGUST 2015	
Constructions – total	B	101.0	94.7	102.0
	S	97.2	98.8	103.5
- by structure elements:				
New constructions	B	97.0	99.0	104.7
	S	90.3	99.1	103.4
Capital repairs	B	134.4	75.4	85.6
	S	109.4	80.9	89.5
Maintenance and current repairs	B	100.7	94.7	104.1
	S	100.5	101.5	109.4
- by construction objects:				
Residential buildings	B	89.5	97.2	101.3
	S	89.3	92.1	99.9
Non-residential buildings	B	93.3	97.7	99.6
	S	91.2	100.9	99.4
Engineering works	B	107.9	92.9	103.5
	S	97.8	97.3	109.0

B = gross series; S = adjusted series according to the number of working days and to seasonality

[Table data in xls format](#)

Additional information:

For the correct interpretation of results, kindly see the [Methodological Note attached to the press release on the homepage](#).

For additional information, kindly see the statistical publication Monthly Statistical Bulletin (date of issue October 27, 2016) and the on line database TEMPO of INS (data for August 2016 will be available on October 12, 2016).

For comparable data with the other Member States of the European Union, kindly see the Eurostat press release, issued on Wednesday, October 19, 2016 at the address: <http://ec.europa.eu/eurostat/web/main>.

The next issue of the press release will be on Monday, November 14, 2016.

The archive of the press releases: <http://www.insse.ro/cms/en/comunicatelor-de-presa-view>

The Directorate of Communication

E-mail: birou presa@insse.ro

Tel: +4021 3181869