

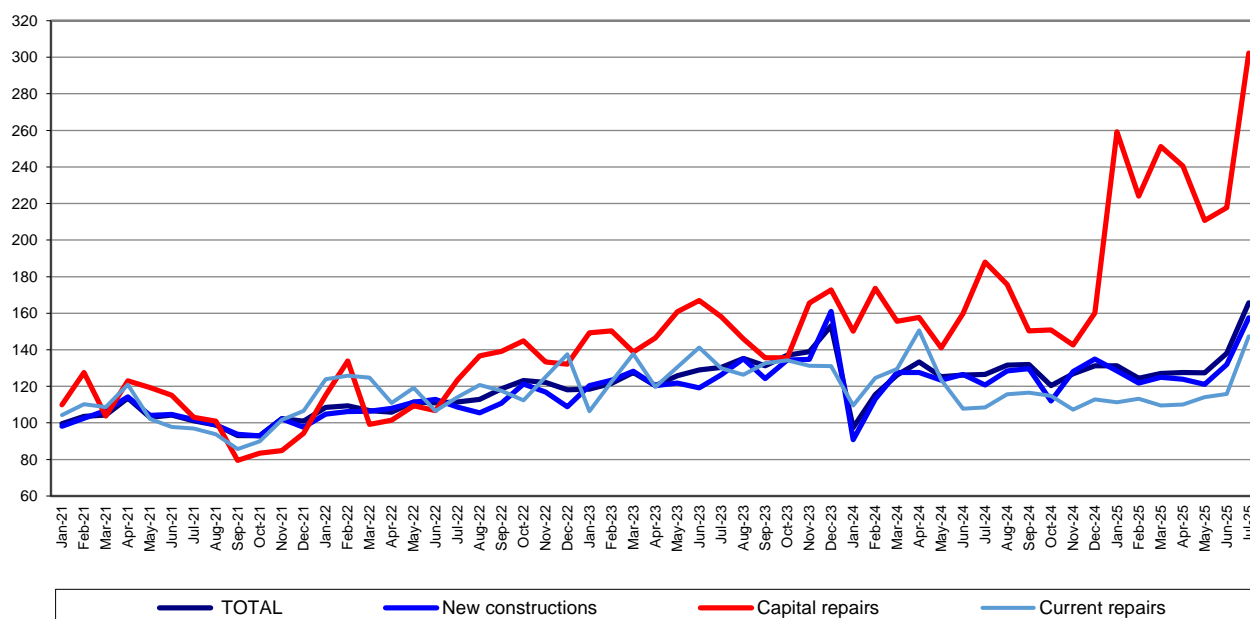
Domain: Construction

## CONSTRUCTION WORKS IN JULY 2025

- In July 2025, the volume of construction works increased, as gross series, by 27.2% compared to June 2025 and was up 20.1% as adjusted series according to the number of working days and to seasonality.
- In July 2025, the volume of construction works rose, as gross series, by 41.1% compared to July 2024 and was up 30.9% as adjusted series according to the number of working days and to seasonality.
- In the 1.I-31.VII.2025 period, the volume of construction works increased, as gross series, by 12.2% compared to the 1.I-31.VII.2024 period and was up 10.7% as adjusted series according to the number of working days and to seasonality.

### Monthly evolution of construction works, by structure elements, according to NACE Rev. 2 - January 2021-July 2025 - (adjusted series according to the number of working days and to seasonality)

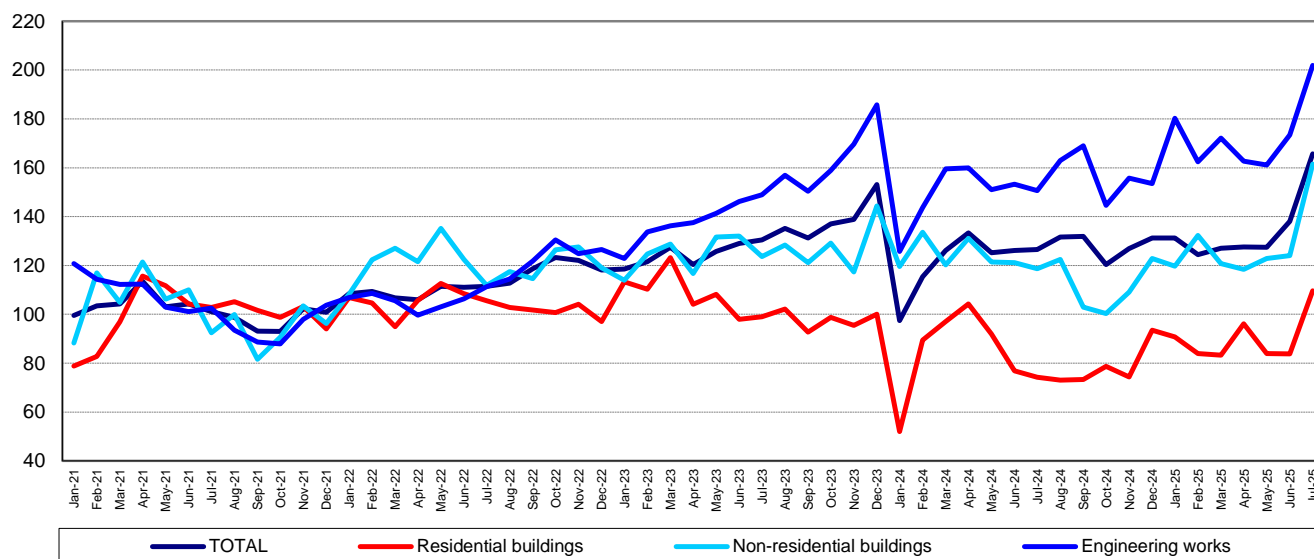
- 2021=100 -



[The graph data in xls format](#)

**Monthly evolution of construction works, by construction objects, according to NACE Rev. 2**  
**- January 2021-July 2025 -**  
 (adjusted series according to the number of working days and to seasonality)

- 2021=100 -



[The graph data in xls format](#)

### July 2025 compared to June 2025

The volume of construction works increased, as gross series, by 27.2%, an increase reflected in capital repair works (+43.0%), in maintenance and current repair works (+27.4%) and in new construction works (+23.6%).

By construction objects, rises were reported for residential buildings (+37.9%), for non-residential buildings (+33.7%) and for engineering works (+21.4%).

The volume of construction works rose, as adjusted series according to the number of working days and to seasonality, by 20.1%, a rise reflected in capital repair works (+38.8%), in maintenance and current repair works (+27.2%) and in new construction works (+19.3%).

By construction objects, the volume of construction works increased for residential buildings (+30.7%), for non-residential buildings (+30.2%) and for engineering works (+16.4%).

### July 2025 compared to July 2024

The volume of construction works increased overall, as gross series, by 41.1%. By structure elements, rises were reported for capital repair works (+67.4%), for maintenance and current repair works (+41.1%) and for new construction works (+35.7%).

By construction objects, rises were reported for residential buildings (+50.8%), for engineering works (+39.6%) and for non-residential buildings (+38.5%).

The volume of construction works increased overall, as adjusted series according to the number of working days and to seasonality, by 30.9%. By structure elements, rises were recorded for capital repair works (+60.9%), for maintenance and current repair works (+35.8%) and for new construction works (+30.4%).

By construction objects, the volume of construction works rose for residential buildings (+47.6%), for non-residential buildings (+36.1%) and for engineering works (+34.0%).

#### The 1.I-31.VII.2025 period compared to the 1.I-31.VII.2024 period

The volume of construction works increased overall, as gross series, by 12.2%, an increase reflected in capital repair works (+55.0%) and in new construction works (+9.3%). The maintenance and current repair works were down 0.3%.

By construction objects, rises were reported for engineering works (+16.3%), for residential buildings (+9.7%) and for non-residential buildings (+6.2%).

The volume of construction works increased, as adjusted series according to the number of working days and to seasonality, by 10.7%. The capital repair works and the new construction works were up 51.5% and 9.6%, respectively. The maintenance and current repair works were down 3.9%.

By construction objects, the volume of construction works rose for engineering works (+16.3%), for residential buildings (+7.8%) and for non-residential buildings (+3.9%).

#### Construction works indices

- percentages -

		JULY 2025 compared to:		1.I-31.VII.2025/ 1.I-31.VII.2024
		JUNE 2025	JULY 2024	
<b>Constructions – total</b>	<b>G</b>	<b>127.2</b>	<b>141.1</b>	<b>112.2</b>
	<b>S</b>	<b>120.1</b>	<b>130.9</b>	<b>110.7</b>
-by structure elements:				
New constructions	G	123.6	135.7	109.3
	S	119.3	130.4	109.6
Capital repairs	G	143.0	167.4	155.0
	S	138.8	160.9	151.5
Maintenance and current repairs	G	127.4	141.1	99.7
	S	127.2	135.8	96.1
-by construction objects:				
Residential buildings	G	137.9	150.8	109.7
	S	130.7	147.6	107.8
Non-residential buildings	G	133.7	138.5	106.2
	S	130.2	136.1	103.9
Engineering works	G	121.4	139.6	116.3
	S	116.4	134.0	116.3

G = gross series; S = adjusted series according to the number of working days and to seasonality

[The table data in xls format](#)

#### Additional information:

- The **construction volume indices** are determined by deflating the value data with the construction cost indices by structure element and by construction object. The construction volume indices are calculated for the overall construction branch (section F of NACE Rev. 2), by structure element (new construction works, capital repair works, maintenance and current repair works) and by construction object (residential buildings, non-residential buildings and engineering works).
- The construction works indices overall are calculated as a weighted arithmetic mean of indices by structure element or of indices by construction object.
- Beside the gross series of construction volume indices, **indices that are adjusted by number of working days and seasonality** are also calculated on a monthly basis, through the **regressive method**, using the **JDEMETRA+** software package (**the TRAMO/SEATS method**).

For the correct interpretation of the indicators, please see the [Methodological Notes attached to the press release on the homepage](#).

For additional information, please see the TEMPO online database of the NIS (the data for July 2025 will be available on September 18, 2025) and the Monthly Statistical Bulletin (date of issue September 30, 2025).

For comparative data at EU level, please see the Eurostat press release to be issued on Thursday, September 18, 2025 at the address <https://ec.europa.eu/eurostat/web/main>.

The next issue of the press release will be on Monday, October 20, 2025.

Press release archive: <https://insse.ro/cms/en/comunicate-de-pres-a-view>

**Directorate for European Affairs, International Cooperation and Communication**

E-mail: [birouipresa@insse.ro](mailto:birouipresa@insse.ro)

Tel.: +4021 3181869