

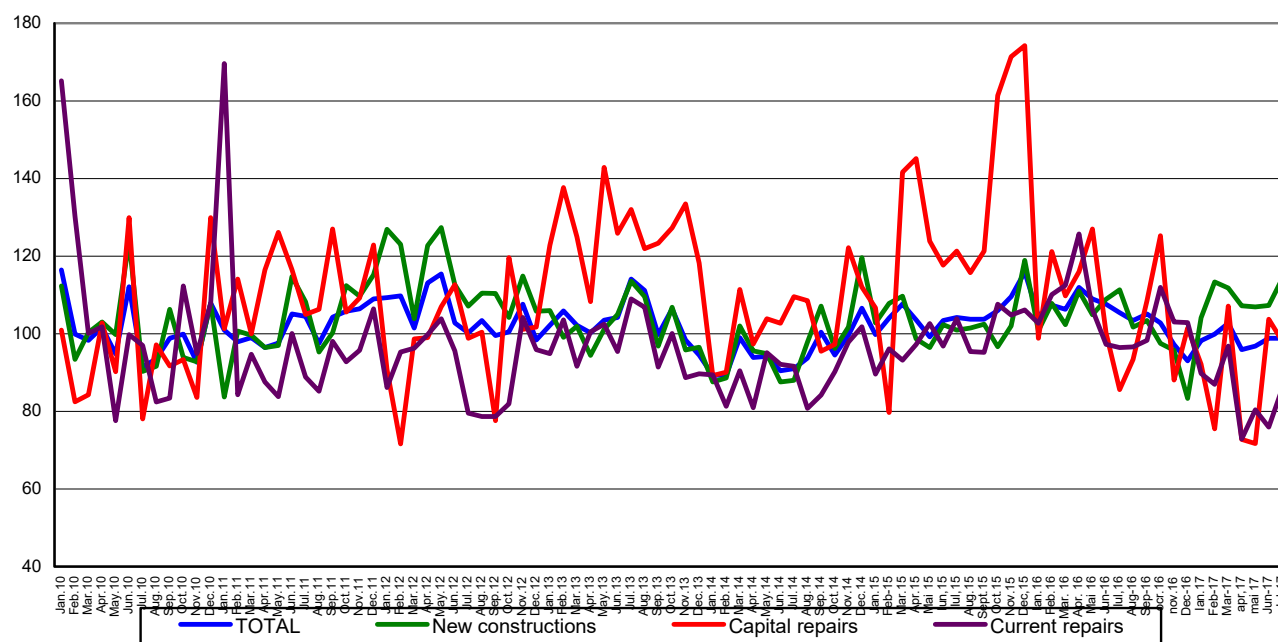
Domain: Construction

IN JULY 2017, THE VOLUME OF CONSTRUCTION WORKS ¹ MAINTAINED THE SAME LEVEL AS IN PREVIOUS MONTH

- Compared to the previous month, in July 2017, the volume of construction works increased as gross series by 2.8% and maintained the same level as adjusted series according to the number of working days and to seasonality.
- Compared to the corresponding month of the previous year, the volume of construction works increased as gross series by 1.4% and decreased by 6.2% as adjusted series according to the number of working days and to seasonality.
- Compared to the period 1.I-31.VII.2016, in the period 1.I - 31.VII.2017, the volume of construction works decreased both as gross series and as adjusted series according to the number of working days and to seasonality by 5.7% and by 8.1%, respectively.

**Monthly evolution of construction works, by structure elements,
according to CANE Rev. 2
- January 2010 – July 2017-**
(adjusted series according to the number of working days and to seasonality)

- 2010=100 -

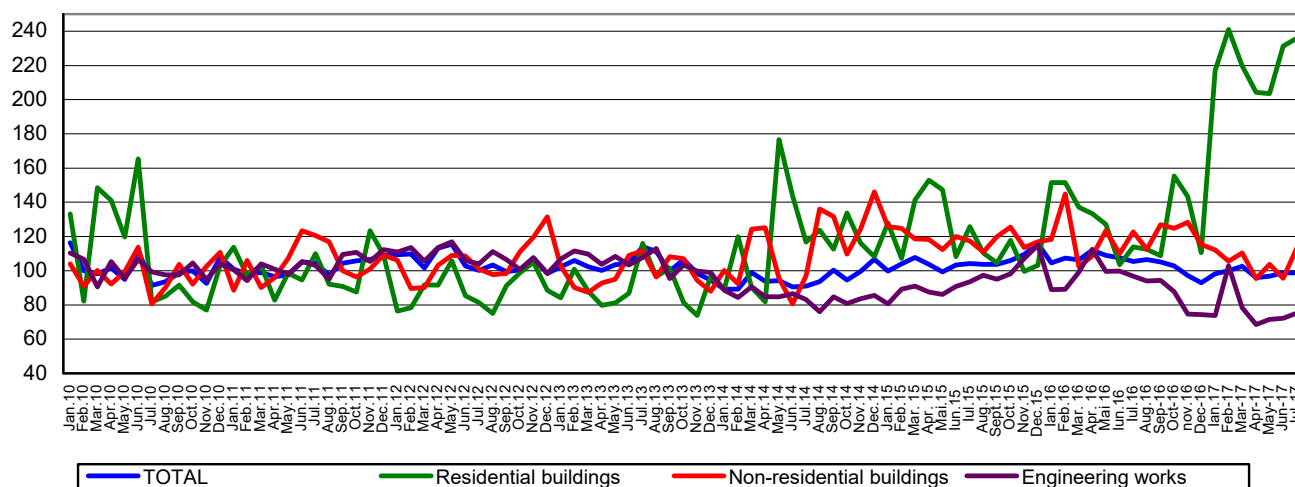


[Graph data in xls format](#)

¹ Adjusted series according to the number of working days and seasonality

**Monthly evolution of construction works, by construction objects,
according to CANE Rev. 2
- January 2010 – July 2017 -**
(adjusted series according to the number of working days and to seasonality)

- 2010=100 -



[Graph data in xls format](#)

July 2017 compared to June 2017

The volume of construction works increased as gross series by 2.8%, increase highlighted in the following structure elements: in maintenance and current repairs works of 10.0% and in new construction works of 4.3%. Capital repair works decreased by 17.9%.

By construction objects, there were rises of 18.1% in non-residential buildings. The residential buildings and the engineering works decreased by 2.7% and by 1.8%, respectively.

The volume of construction works increased, as adjusted series by the number of working days and by seasonality, by 13.1% for maintenance and current repairs works and by 6.5% for new construction works. There were drops of 5.4% in capital repairs.

By construction objects, the volume of construction works increased in non-residential buildings by 18.4%, in engineering works by 4.3% and in residential buildings by 2.0%.

July 2017 compared to July 2016

The volume of construction works increased, as gross series, by 1.4%. By structure elements, there were rises in the following structure elements: in capital repair works of 17.0% and in new construction works of 4.2%. The maintenance and current repairs works decreased by 11.7%.

By construction objects, the volume of construction works increased in residential buildings by 104.5%. There were drops in engineering works of 17.4% and in non-residential buildings of 8.1%.

The volume of construction works decreased, as adjusted series according to the number of working days and to seasonality, by 6.2%. By structure elements, there were drops in maintenance and current repairs works of 10.9%. There were rises in capital repair works of 14.6% and in new construction works of 2.6%.

By construction objects, the volume of construction works decreased in engineering works by 22.4% and in non-residential buildings by 7.8%. There were rises of 107.2% in residential buildings.

Period 1.I - 31.VII.2017 compared to period 1.I – 31.VII.2016

The volume of construction works decreased per total, as gross series, by 5.7%. By structure elements, there were drops in maintenance and current repairs works of 22.5% and in capital repairs works of 16.9%. The new construction works increased by 2.7%.

By construction objects, there were drops in engineering works of 25.7% and in non-residential buildings of 11.4%. The residential buildings increased by 81.2%.

The volume of construction works decreased per total, as adjusted series according to the number of working days and to seasonality, by 8.1%. By structure elements, there were drops in maintenance and current repairs works of 21.6% and in capital repairs works of 18.1%. The new construction works increased by 2.4%. By construction objects, the volume of construction works decreased in engineering works by 25.4% and in non-residential buildings by 11.4%. The volume of construction works increased in residential buildings by 69.2%.

Construction works indices

- percentage -

		JULY 2017 compared to :		Period 1.I-31.VII.2017/ Period 1.I-31.VII.2016
		JUNE 2017	JULY 2016	
	B	102.8	101.4	94.3
	S	100.0	93.8	91.9
- by structure elements:				
	B	104.3	104.2	102.7
	S	106.5	102.6	102.4
	B	82.1	117.0	83.1
	S	94.6	114.6	81.9
	B	110.0	88.3	77.5
	S	113.1	89.1	78.4
- by construction objects:				
	B	97.3	204.5	181.2
	S	102.0	207.2	169.2
	B	118.1	91.9	88.6
	S	118.4	92.2	88.6
	B	98.2	82.6	74.3
	S	104.3	77.6	74.6

B= gross series; S= adjusted series according to the number of working days and to seasonality;

[Table data in xls format](#)

Additional Information:

The value of the construction works includes new construction works, capital repairs works and maintenance and current repairs works carried out by units with main activity in the field (Section F of CAEN rev.2).

The volume indices in constructions are determined by deflating the value data with cost indices in constructions, by structure elements and by construction objects.

For the correct interpretation of results, kindly see the [Methodological Note attached to the press release on the homepage](#).

For additional information, kindly see the statistical publication Monthly Statistical Bulletin (date of issue September 26, 2017) and the on line TEMPO database of INS (data for July 2017 will be available on September 14, 2017).

For comparable data with the other Member States of the European Union, kindly see the Eurostat press release, issued on Tuesday, September 19, 2017 at the address: <http://ec.europa.eu/eurostat/web/main>

The next issue of the press release will be on Friday, October 13, 2017.

The archive of the press releases: <http://www.insse.ro/cms/en/comunicate-de-presa-view>

The Directorate of Communication

e-mail: birou presa@insse.ro

Tel: +4021 3181869