



ROMANIA

NATIONAL INSTITUTE  
OF STATISTICS  
www.insse.ro

PRESS RELEASE

No. 213 /August 20, 2024

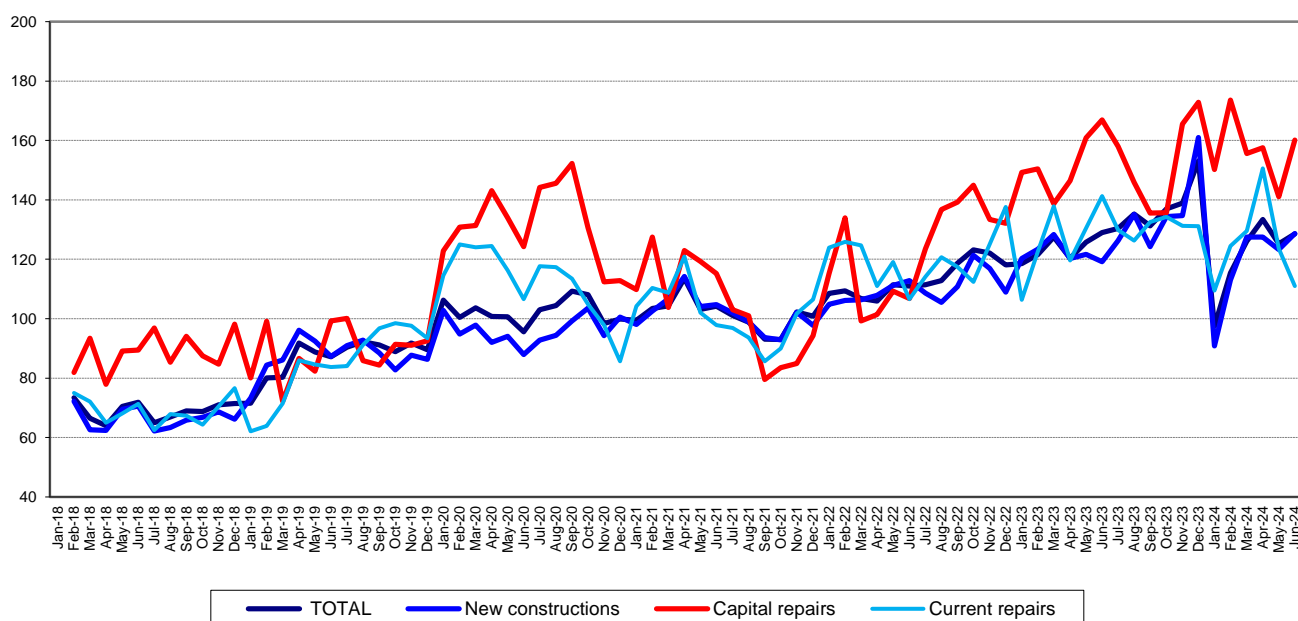
Domain: Construction

## CONSTRUCTION WORKS IN JUNE 2024

- In June 2024, the volume of construction works increased, as gross series, by 8.8% compared to May 2024 and was up 2.6% as adjusted series according to the number of working days and to seasonality.
- In June 2024, the volume of construction works fell, as gross series, by 6.0% compared to June 2023 and was down 0.4% as adjusted series according to the number of working days and to seasonality.
- In the 1.I-30.VI.2024 period, the volume of construction works decreased, as gross series, by 2.5% compared to the 1.I-30.VI.2023 period and was down 2.2% as adjusted series according to the number of working days and to seasonality.

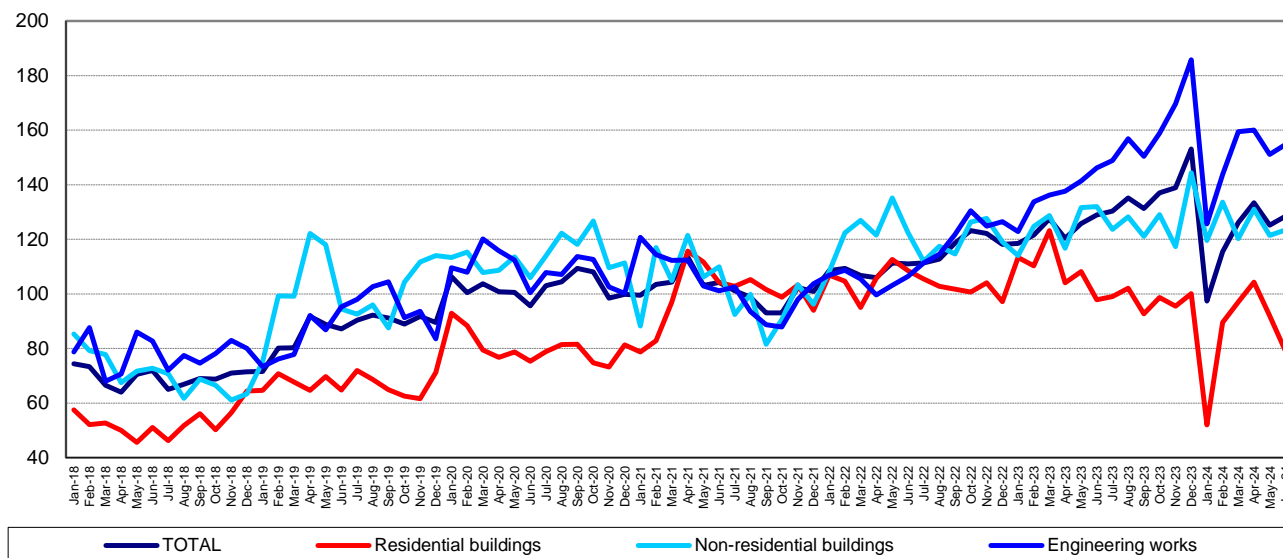
### Monthly evolution of construction works, by structure elements, according to NACE Rev. 2 - January 2018-June 2024 - (adjusted series according to the number of working days and to seasonality)

- 2021=100 -

[The graph data in xls format](#)

**Monthly evolution of construction works, by construction objects, according to NACE Rev. 2**  
**- January 2018-June 2024 -**  
**(adjusted series according to the number of working days and to seasonality)**

- 2021=100 -



[The graph data in xls format](#)

### June 2024 compared to May 2024

The volume of construction works increased, as gross series, by 8.8%, an increase reflected in capital repair works (+24.4%) and in new construction works (+10.1%). The maintenance and current repair works were down 1.7%. By construction objects, rises were reported for engineering works (+16.6%) and for non-residential buildings (+9.9%). The residential buildings dropped 12.8%.

The volume of construction works rose, as adjusted series according to the number of working days and to seasonality, by 2.6%, a rise reflected in capital repair works (+13.5%) and in new construction works (+4.3%). The maintenance and current repair works were down 10.2%.

By construction objects, the volume of construction works increased for engineering works (+2.4%) and for non-residential buildings (+1.6%). A 14.2% drop was recorded for residential buildings.

### June 2024 compared to June 2023

The volume of construction works decreased overall, as gross series, by 6.0%. By structure elements, drops were reported for maintenance and current repair works (-23.7%) and for capital repair works (-7.6%). The new construction works were up 1.7%.

By construction objects, the volume of construction works fell for residential buildings (-22.9%) and for non-residential buildings (-9.7%). The engineering works were up 2.6%.

The volume of construction works decreased overall, as adjusted series according to the number of working days and to seasonality, by 0.4%. By structure elements, drops were recorded for maintenance and current repair works (-21.5%) and for capital repair works (-4.0%). The new construction works were up 7.9%.

By construction objects, the volume of construction works increased for engineering works (+5.8%). The residential buildings and the non-residential buildings were down 19.4% and 6.5%, respectively.

### The 1.I-30.VI.2024 period compared to the 1.I-30.VI.2023 period

The volume of construction works decreased overall, as gross series, by 2.5%. Falls were reported for maintenance and current repair works (-4.7%), for new construction works (-2.1%) and for capital repair works (-0.6%).

By construction objects, drops were recorded for residential buildings (-22.2%) and for non-residential buildings (-2.0%). The engineering works were up 7.6%.

The volume of construction works was down 2.2% as adjusted series according to the number of working days and to seasonality. The new construction works dropped 3.1%, and the maintenance and current repair works were down 1.3%. A 2.8% rise was reported for capital repair works.

By construction objects, a fall was recorded for residential buildings (-21.8%). The engineering works and the non-residential buildings were up 9.4% and 0.2%, respectively.

### Construction works indices

- percentages -

		JUNE 2024 compared to:		1.I-30.VI.2024/ 1.I-30.VI.2023
		MAY 2024	JUNE 2023	
<b>Constructions – total</b>	<b>G</b>	108.8	94.0	97.5
	<b>S</b>	102.6	99.6	97.8
- by structure elements:				
New constructions	G	110.1	101.7	97.9
	S	104.3	107.9	96.9
Capital repairs	G	124.4	92.4	99.4
	S	113.5	96.0	102.8
Maintenance and current repairs	G	98.3	76.3	95.3
	S	89.8	78.5	98.7
- by construction objects:				
Residential buildings	G	87.2	77.1	77.8
	S	85.8	80.6	78.2
Non-residential buildings	G	109.9	90.3	98.0
	S	101.6	93.5	100.2
Engineering works	G	116.6	102.6	107.6
	S	102.4	105.8	109.4

G = gross series; S = adjusted series according to the number of working days and to seasonality

[The table data in xls format](#)

### Additional information:

- The **construction volume indices** are determined by deflating the value data with the construction cost indices by structure element and by construction object. The construction volume indices are calculated for the overall construction branch (section F of NACE Rev. 2), by structure element (new construction works, capital repair works, maintenance and current repair works) and by construction object (residential buildings, non-residential buildings and engineering works).
- The construction works indices overall are calculated as a weighted arithmetic mean of indices by structure element or of indices by construction object.
- Beside the gross series of construction volume indices, **indices that are adjusted by number of working days and seasonality** are also calculated on a monthly basis, through the **regressive method**, using the **IDEMETRA+** software package (**the TRAMO/SEATS method**).

For the correct interpretation of the indicators, please see the [Methodological Notes attached to the press release on the homepage](#).

For additional information, please see the TEMPO online database of the NIS (the data for June 2024 will be available on August 20, 2024) and the Monthly Statistical Bulletin (date of issue August 28, 2024).

For comparative data at EU level, please see the Eurostat press release to be issued on Tuesday, August 20, 2024 at the address <https://ec.europa.eu/eurostat/web/main>.

The next issue of the press release will be on Wednesday, September 18, 2024.

Press release archive: <https://insse.ro/cms/en/comunicate-de-presa-view>

**Communication Directorate**

E-mail: [birou presa@insse.ro](mailto:birou presa@insse.ro)

Tel.: +4021 3181869