

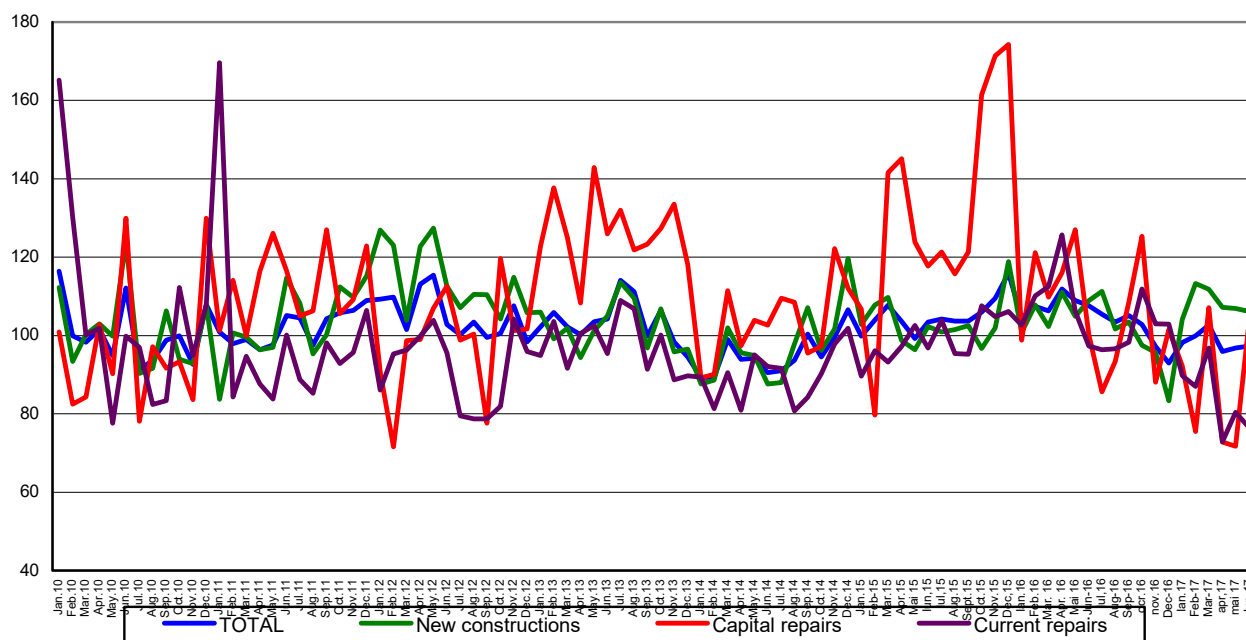
Domain: Construction

## IN JUNE 2017 AND THE PERIOD 1.I-30.VI.2017, THE VOLUME OF CONSTRUCTION WORKS EVOLVED AS FOLLOWS:

- Compared to the previous month, in June 2017, the volume of construction works increased both as gross series by 18.8% and as adjusted series according to the number of working days by 0.5%.
- Compared to the corresponding month of the previous year, the volume of construction works decreased, both as gross series and as adjusted series according to the number of working days and to seasonality by 7.4% and by 9.6%, respectively.
- Compared to the period 1.I-30.VI.2016, in the period 1.I - 30.VI.2017, the volume of construction works decreased both as gross series and as adjusted series according to the number of working days and to seasonality by 7.2% and by 8.7%, respectively.

**Monthly evolution of construction works, by structure elements,  
according to CANE Rev. 2  
- January 2010 – June 2017 -  
(adjusted series according to the number of working days and to seasonality)**

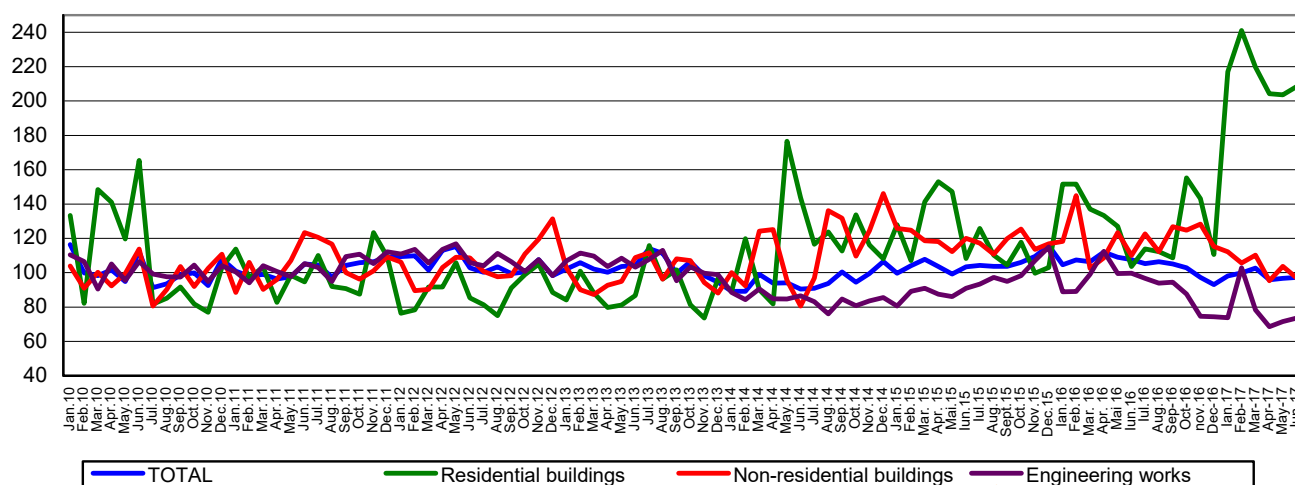
- 2010=100 -



[Graph data in xls format](#)

**Monthly evolution of construction works, by construction objects,  
according to CANE Rev. 2  
- January 2010 – June 2017 -  
(adjusted series according to the number of working days and to seasonality)**

- 2010=100 -



[Graph data in xls format](#)

#### June 2017 compared to May 2017

The volume of construction works increased as gross series by 18.8 increase highlighted in all the structure elements: in capital repair works of 61.3%, in new construction works of 14.8% and in maintenance and current repairs works of 14.2%.

By construction objects, there were rises in engineering works of 28.5%, in residential buildings of 13.3% and in non-residential buildings of 7.6%.

The volume of construction works increased per total, as adjusted series by the number of working days and by seasonality, by 0.5%, increase highlighted in capital repairs works of 44.7%. There were drops in maintenance and current repairs works of 4.9% and in new construction works of 0.7%.

By construction objects, the volume of construction works increased in engineering works by 3.1% and in residential buildings by 2.4%. The non-residential buildings decreased by 6.5%.

#### June 2017 compared to June 2016

The volume of construction works decreased, as gross series, by 7.4%. By structure elements, there were drops in all the structure elements as follows: in maintenance and current repairs works of 23.7% and in new construction works of 3.5%. The capital repair works increased by 5.7%.

By construction objects, the volume of construction works decreased in engineering works by 23.5% and in non-residential buildings by 13.5%. There were rises in residential buildings of 84.8%.

The volume of construction works decreased, as adjusted series according to the number of working days and to seasonality, by 9.6%. By structure elements, there were drops in maintenance and current repairs works of 21.4% and in new construction works of 2.6%. The capital repair works increased by 3.4% .

By construction objects, the volume of construction works decreased in engineering works by 26.1% and in non-residential buildings by 11.9%. There were rises of 101.5% in residential buildings.

## Period 1.I - 30.VI.2017 compared to period 1.I – 30.VI.2016

The volume of construction works decreased per total, as gross series, by 7.2%. By structure elements, there were drops in maintenance and current repairs works of 24.6% and in capital repairs works of 21.9%. The new construction works increased by 2.2%.

By construction objects, there were drops in engineering works of 26.6% and in non-residential buildings of 11.6%. The residential buildings increased by 72.4%.

The volume of construction works decreased per total, as adjusted series according to the number of working days and to seasonality, by 8.7%. By structure elements, there were drops in maintenance and current repairs works of 23.1% and in capital repairs works of 22.3%. The new construction works increased by 2.1%. By construction objects, the volume of construction works decreased in engineering works by 25.6% and in non-residential buildings by 11.8%. The volume of construction works increased in residential buildings by 61.0%.

### Construction works indices

- percentage -

		JUNE 2017 compared to:		Period 1.I-30.VI.2017/ Period 1.I-30.VI.2016
		May 2017	June 2016	
Constructions - <b>total</b>	B	118.8	92.6	92.8
	S	100.5	90.4	91.3
- by structure elements:				
New constructions	B	114.8	96.5	102.2
	S	99.3	97.4	102.1
Capital repairs	B	161.3	105.7	78.1
	S	144.7	103.4	77.7
Maintenance and current repairs	B	114.2	76.3	75.4
	S	95.1	78.6	76.9
- by construction objects:				
Residential buildings	B	113.3	184.8	172.4
	S	102.4	201.5	161.0
Non-residential buildings	B	107.6	86.5	88.4
	S	93.5	88.1	88.2
Engineering works	B	128.5	76.5	73.4
	S	103.1	73.9	74.4

B= gross series; S= adjusted series according to the number of working days and to seasonality;

[Table data in xls format](#)

#### Additional Information:

- ✓ **The value of the construction works** includes new construction works, capital repairs works and maintenance and current repairs works carried out by units with main activity in the field (Section F of CAEN rev.2).
- ✓ **The volume indices in constructions** are determined by deflating the value data with cost indices in constructions, by structure elements and by construction objects.

For the correct interpretation of results, kindly see the [Methodological Note attached to the press release on the homepage](#).

For additional information, kindly see the statistical publication Monthly Statistical Bulletin (date of issue August 28, 2017) and the on line TEMPO database of INS (data for June 2017 will be available on August 14, 2017).

For comparable data with the other Member States of the European Union, kindly see the Eurostat press release, issued on Friday, August 18 2017 at the address: <http://ec.europa.eu/eurostat/web/main>

The next issue of the press release will be on Thursday, September 14, 2017.

The archive of the press releases: <http://www.insse.ro/cms/en/comunicate-de-presa-view>

#### The Directorate of Communication

e-mail: [biroupresa@insse.ro](mailto:biroupresa@insse.ro)

Tel: +4021 3181869