

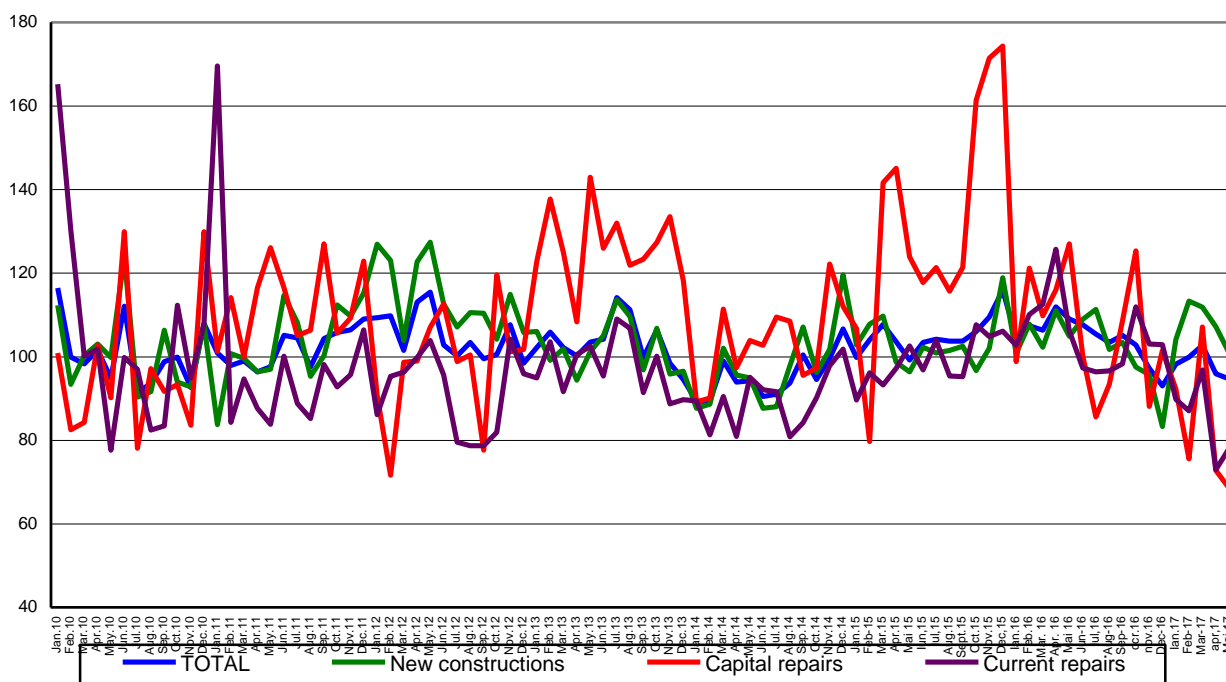
Domain: Construction

IN MAY 2017, THE CONSTRUCTION WORKS DECREASED BY 16.7% COMPARED TO MAY 2016

- Compared to the previous month, in May 2017, the volume of construction works increased, as gross series, by 10.6% and decreased as adjusted series according to the number of working days by 1.3%.
- Compared to the corresponding month of the previous year, the volume of construction works decreased, both as gross series and as adjusted series according to the number of working days and to seasonality by 16.7% and by 13.1%, respectively.
- Compared to the period 1.I-31.V.2016, in the period 1.I - 31.V.2017, the volume of construction works decreased both as gross series and as adjusted series according to the number of working days and to seasonality by 8.6% and by 8.9%, respectively.

**Monthly evolution of construction works, by structure elements,
according to CANE Rev. 2
- January 2010 – May 2017-
(adjusted series according to the number of working days and to seasonality)**

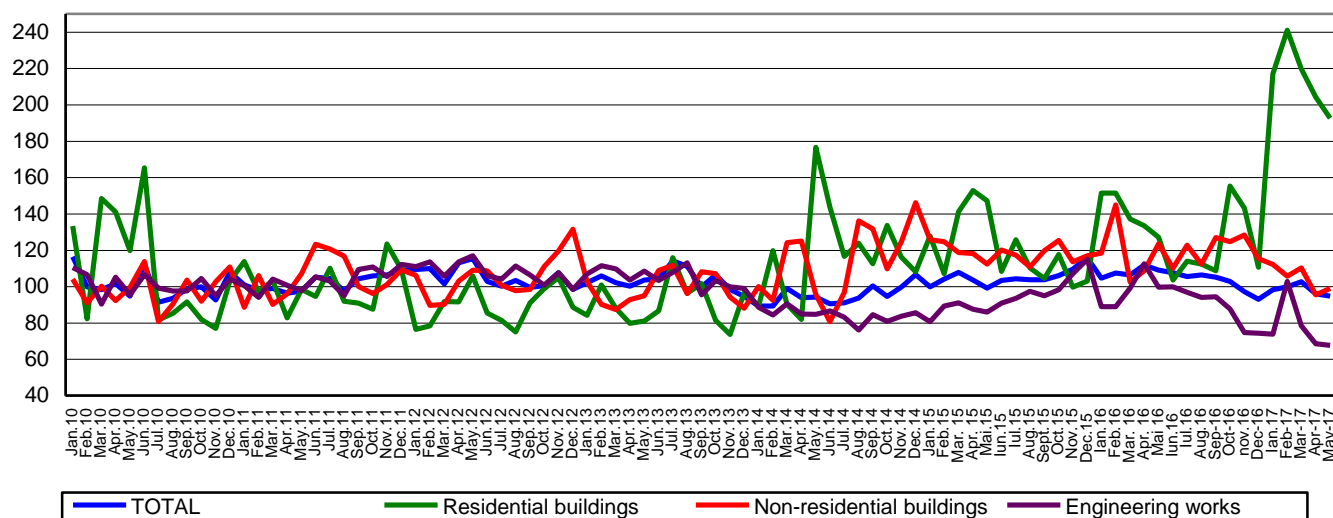
- 2010=100 -



Graph data in xls format

**Monthly evolution of construction works, by construction objects,
according to CANE Rev. 2
- January 2010 – May 2017 -
(adjusted series according to the number of working days and to seasonality)**

- 2010=100 -



[Graph data in xls format](#)

May 2017 compared to April 2017

The volume of construction works increased as gross series by 10.6%, increase highlighted in all the structure elements: in maintenance and current repairs works of 26.4%, in capital repair works of 18.1% and in new construction works of 5.6%.

By construction objects, there were rises in engineering works of 17.7% and in non-residential buildings of 10.8%. There were drops in residential buildings of 0.6%.

The volume of construction works decreased per total, as adjusted series by the number of working days and by seasonality, by 1.3%, decrease highlighted in new construction works and in capital repairs works (5.8%, each). The maintenance and current repairs works increased by 7.0%.

By construction objects, the volume of construction works decreased in residential buildings by 5.6% and in engineering works by 1.2%. The non-residential buildings increased by 3.8%.

May 2017 compared to May 2016

The volume of construction works decreased, as gross series, by 16.7%. By structure elements, there were drops in all the structure elements as follows: in capital repair works of 47.7%, in maintenance and current repairs works of 28.4% and in new construction works of 4.6%.

By construction objects, the volume of construction works decreased in engineering works by 31.6% and in non-residential buildings by 20.5%. There were rises in residential buildings of 48.4%.

The volume of construction works decreased, as adjusted series according to the number of working days and to seasonality, by 13.1%. By structure elements, there were drops as follows: in capital repair works of 46.0%, in maintenance and current repairs works of 26.6% and in new construction works of 3.8%.

By construction objects, the volume of construction works decreased in engineering works by 32.1% and in non-residential buildings by 19.7%. There were rises of 51.6% in residential buildings.

Period 1.I - 31.V.2017 compared to period 1.I – 31.V.2016

The volume of construction works decreased per total, as gross series, by 8.6%. By structure elements, there were drops in capital repairs works of 29.5% and in maintenance and current repairs works of 25.8%. The new construction works increased by 2.1%.

By construction objects, there were drops in engineering works of 29.0% and in non-residential buildings of 12.1%. The residential buildings increased by 67.2%.

The volume of construction works decreased per total, as adjusted series according to the number of working days and to seasonality, by 8.9%. By structure elements, there were drops in capital repairs works and in maintenance and current repairs works of 27.3% and of 23.8%, respectively. The new construction works increased by 2.0%. By construction objects, the volume of construction works decreased in engineering works by 26.3% and in non-residential buildings by 12.6%. The volume of construction works increased in residential buildings by 53.5%.

Construction works indices

- percentage -

		MAY 2017 compared to:		Period 1.I-31.V.2017/ Period 1.I-31.V.2016
		April 2017	May 2016	
Constructions - total	B	110.6	83.3	91.4
	S	98.7	86.9	91.1
- by structure elements:				
New constructions	B	105.6	95.4	102.1
	S	94.2	96.2	102.0
Capital repairs	B	118.1	52.3	70.5
	S	94.2	54.0	72.7
Maintenance and current repairs	B	126.4	71.6	74.2
	S	107.0	73.4	76.2
- by construction objects:				
Residential buildings	B	99.4	148.4	167.2
	S	94.4	151.6	153.5
Non-residential buildings	B	110.8	79.5	87.9
	S	103.8	80.3	87.4
Engineering works	B	117.7	68.4	71.0
	S	98.8	67.9	73.7

B= gross series; S= adjusted series according to the number of working days and to seasonality;

[Table data in xls format](#)

Additional Information:

- ✓ **The value of the construction works** includes new construction works, capital repairs works and maintenance and current repairs works carried out by units with main activity in the field (Section F of CAEN rev.2).

- ✓ **The volume indices in constructions** are determined by deflating the value data with cost indices in constructions, by structure elements and by construction objects.

For the correct interpretation of results, kindly see the [Methodological Note attached to the press release on the homepage](#).

For additional information, kindly see the statistical publication Monthly Statistical Bulletin (date of issue July 27, 2017) and the on line TEMPO database of INS (data for May 2017 will be available on July 13, 2017).

For comparable data with the other Member States of the European Union, kindly see the Eurostat press release, issued on Wednesday, July 19, 2017 at the address: <http://ec.europa.eu/eurostat/web/main>

The next issue of the press release will be on Monday, August 14, 2017.

The archive of the press releases: <http://www.insse.ro/cms/en/comunicate-de-presa-view>

The Directorate of Communication

e-mail: biroupresa@insse.ro

Tel: +4021 3181869