



ROMANIA

NATIONAL INSTITUTE
OF STATISTICS
www.insse.ro

PRESS RELEASE

No. 161/June 16, 2020

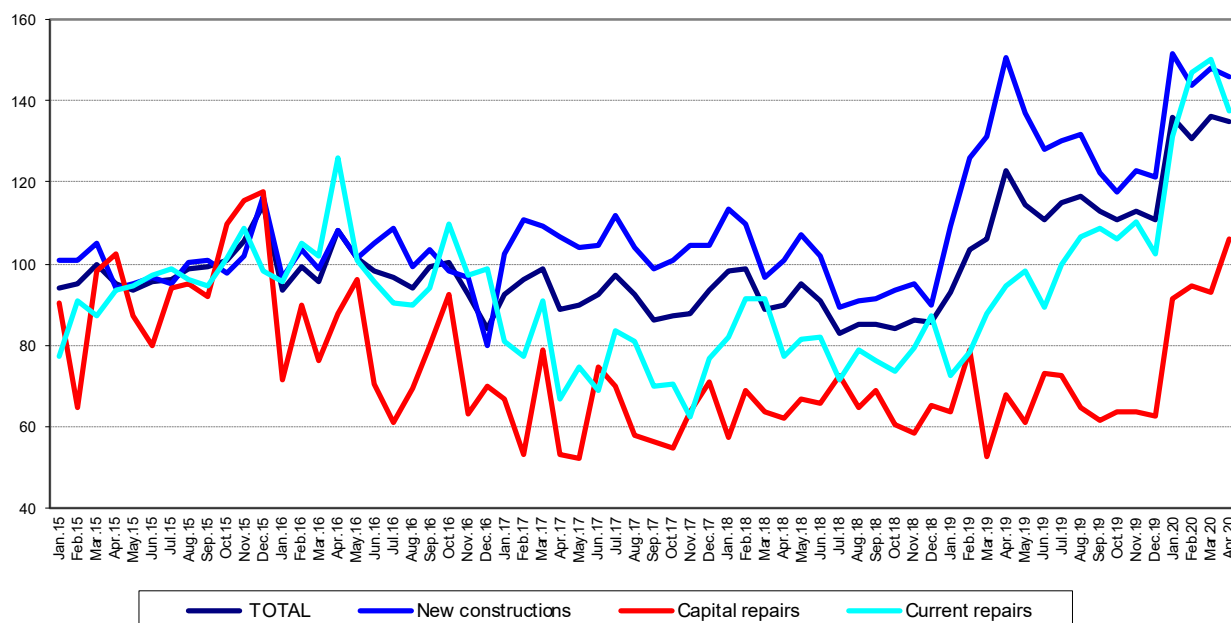
Domain: Construction

CONSTRUCTION WORKS IN APRIL 2020

- In April 2020, the volume of construction works increased, as gross series, by 2.5% compared to the previous month and was down 0.9% as adjusted series according to the number of working days and to seasonality.
- Compared to the corresponding month of the previous year, the volume of construction works rose both as gross series and as adjusted series according to the number of working days and to seasonality, by 12.1% and by 10.0%, respectively.
- Compared to the 1.I-30.IV.2019 period, in the 1.I-30.IV.2020 period, the volume of construction works increased, as gross series, by 26.5% and rose, as adjusted series according to the number of working days and to seasonality, by 26.5%.

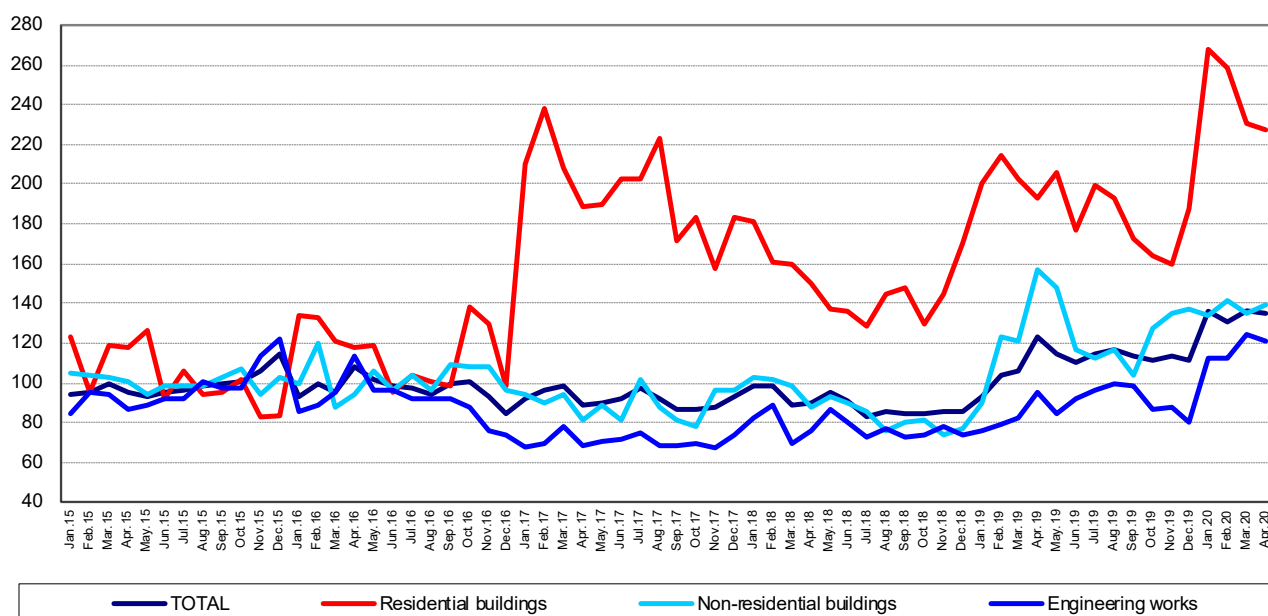
Monthly evolution of construction works, by structure elements, according to NACE Rev. 2 - January 2015-April 2020 - (adjusted series according to the number of working days and to seasonality)

- 2015=100 -

[The graph data in xls format](#)

Monthly evolution of construction works, by construction objects, according to NACE Rev. 2
- January 2015-April 2020 -
(adjusted series according to the number of working days and to seasonality)

- 2015=100 -



[The graph data in xls format](#)

April 2020 compared to March 2020

The volume of construction works increased overall, **as gross series**, by 2.5%, an increase reflected in capital repair works (+12.9%) and in maintenance and current repair works (+8.6%). The new construction works dropped 1.3%.

By construction objects, the **gross series** shows rises in the volume of engineering works (+3.8%) and non-residential buildings (+2.6%). The volume of residential buildings fell by 0.4%.

The volume of construction works decreased overall, **as adjusted series according to the number of working days and to seasonality**, by 0.9%, a decrease reflected in maintenance and current repair works (-8.3%) and in new construction works (-1.6%). The volume of capital repair works rose by 14.0%.

By construction objects, the **adjusted series according to the number of working days and to seasonality** shows a rise in the volume of non-residential buildings (+3.2%) but also drops in the volume of engineering works (-2.5%) and residential buildings (-1.4%).

April 2020 compared to April 2019

The volume of construction works rose overall, **as gross series**, by 12.1%. By structure elements, rises were reported for capital repair works (+62.1%) and for maintenance and current repair works (+46.2%). The new construction works were down 2.4%.

By construction objects, the **gross series** shows increases in the volume of engineering works (+29.2%) and residential buildings (+18.3%). The non-residential buildings fell by 11.0%.

The volume of construction works increased, **as adjusted series according to the number of working days and to seasonality**, by 10.0%. By structure elements, increases were reported for capital repair works (+56.2%) and for maintenance and current repair works (+46.1%). The new construction works dropped 3.4%.

By construction objects, the **adjusted series according to the number of working days and to seasonality** shows rises in the volume of engineering works (+27.6%) and residential buildings (+17.8%). The volume of construction works for non-residential buildings decreased by 11.1%.

The 1.I-30.IV.2020 period compared to the 1.I-30.IV.2019 period

The volume of construction works increased overall, **as gross series**, by 26.5%. By structure elements, rises were reported for maintenance and current repair works (+66.2%), for capital repair works (+57.3%) and for new construction works (+13.3%).

By construction objects, **as gross series**, increases were reported as follows: engineering works (+45.7%), residential buildings (+21.3%) and non-residential buildings (+8.1%).

The volume of construction works rose overall, **as adjusted series according to the number of working days and to seasonality**, by 26.5%, an increase reflected in the volume of maintenance and current repair works (+70.4%), capital repair works (+46.5%) and new construction works (+13.8%).

By construction objects, the **adjusted series according to the number of working days and to seasonality** shows rises in the volume of construction works for engineering works (+41.7%), residential buildings (+21.3%) and non-residential buildings (+12.1%).

Construction works indices

- percentages -

Construction works indices		APRIL 2020 in % compared to:		1.I-30.IV.2020/ 1.I-30.IV.2019 -%-
		MARCH 2020	APRIL 2019	
Constructions – total	G	102.5	112.1	126.5
	S	99.1	110.0	126.5
- by structure elements:				
New constructions	G	98.7	97.6	113.3
	S	98.4	96.6	113.8
Capital repairs	G	112.9	162.1	157.3
	S	114.0	156.2	146.5
Maintenance and current repairs	G	108.6	146.2	166.2
	S	91.7	146.1	170.4
- by construction objects:				
Residential buildings	G	99.6	118.3	121.3
	S	98.6	117.8	121.3
Non-residential buildings	G	102.6	89.0	108.1
	S	103.2	88.9	112.1
Engineering works	G	103.8	129.2	145.7
	S	97.5	127.6	141.7

G = gross series; S = adjusted series according to the number of working days and to seasonality

[The table data in xls format](#)

IMPORTANT!

- ✓ *The information in this press release (April 2020) captures the impact of the COVID-19 crisis and of the measures taken by the authorities as a result of the state of emergency having been declared on Romanian territory as of 16 March 2020.*
- ✓ *The National Institute of Statistics understands the difficulties its respondents are confronted with during this period and is aware of the fact that the answers to statistical surveys may not be a priority at this time.*
- ✓ *Nevertheless, by collecting statistical information, we will be able to monitor the effects of COVID-19 on our economy and society and inform all our users about these effects.*
- ✓ *We appreciate the constant support of our respondents in the statistical surveys conducted by the National Institute of Statistics and understand the difficulties all statistical data providers are facing.*

Additional information:

- The **construction volume indices** are determined by deflating the value data with the construction cost indices by structure element and by construction object. The construction volume indices are calculated for the overall construction branch (section F of NACE Rev. 2), by structure element (new construction works, capital repair works, maintenance and current repair works) and by construction object (residential buildings, non-residential buildings and engineering works).
- The construction works indices overall are calculated as a weighted arithmetic mean of indices by structure element or of indices by construction object.
- Beside the gross series of construction volume indices, **indices that are adjusted by number of working days and seasonality** are also calculated on a monthly basis, through the **regressive method**, using the **JDEMETRA+ version 2.0** software package (**the TRAMO/SEATS method**), a method recommended by the European regulations concerning short-term indicators (Council Regulation No 1165/1998).
- The response rate to the monthly statistical survey on short-term indicators in construction (CONTS), the VAL chapter – The value of construction works for April 2020, was 77.2% compared to 80.1% in April 2019.

For the correct interpretation of the indicators, please see the [Methodological Notes attached to the press release on the homepage](#).

For additional information, please see the TEMPO online database of the NIS (the data for April 2020 will be available on June 16, 2020) and the Monthly Statistical Bulletin (date of issue June 25, 2020).

For comparative data at EU level, please see the Eurostat press release to be issued on Wednesday, June 17, 2020 at the address <https://ec.europa.eu/eurostat/web/main>.

The next issue of the press release will be on Wednesday, July 15, 2020.

Press release archive: <https://insse.ro/cms/en/comunicate-de-presa-view>

Communication Directorate

E-mail: birou presa@insse.ro

Tel: +4021 3181869