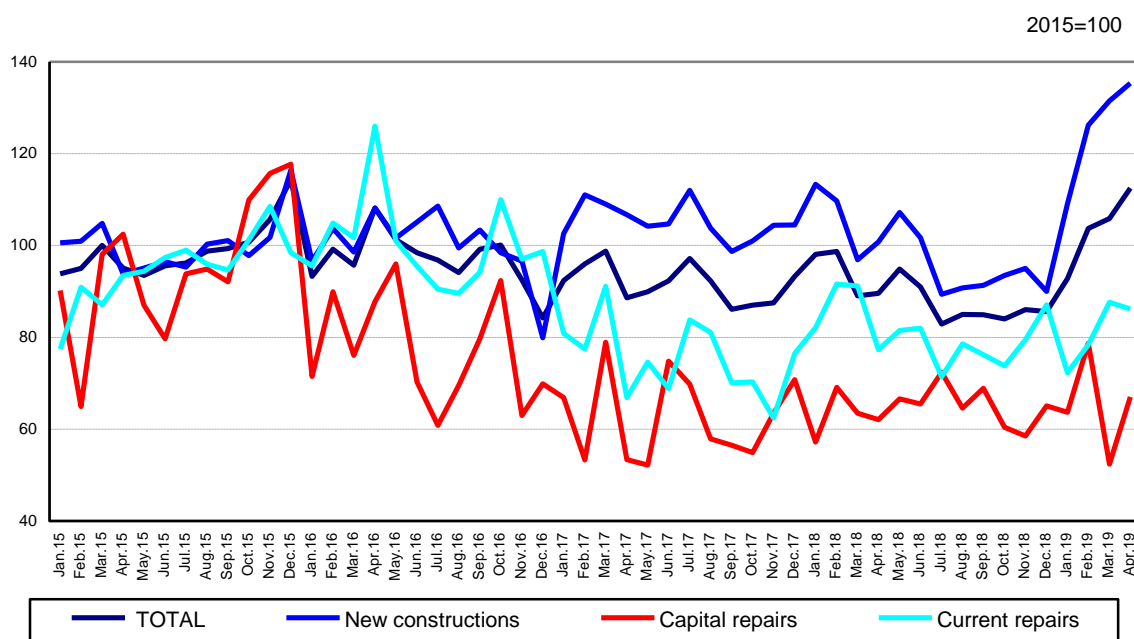


Domain: Construction

CONSTRUCTION WORKS IN APRIL 2019

- Compared to the previous month, in April 2019, the volume of construction works increased, as gross series, by 9.0% and rose, as adjusted series according to the number of working days and to seasonality, by 6.2%.
- Compared to the corresponding month of the previous year, the volume of construction works rose both as gross series and as adjusted series according to the number of working days and to seasonality, by 33.4% and by 25.5%, respectively.
- Compared to the 1.I-30.IV.2018 period, in the 1.I-30.IV.2019 period, the volume of construction works increased, as gross series, by 17.8% and rose, as adjusted series according to the number of working days and to seasonality, by 10.5%.

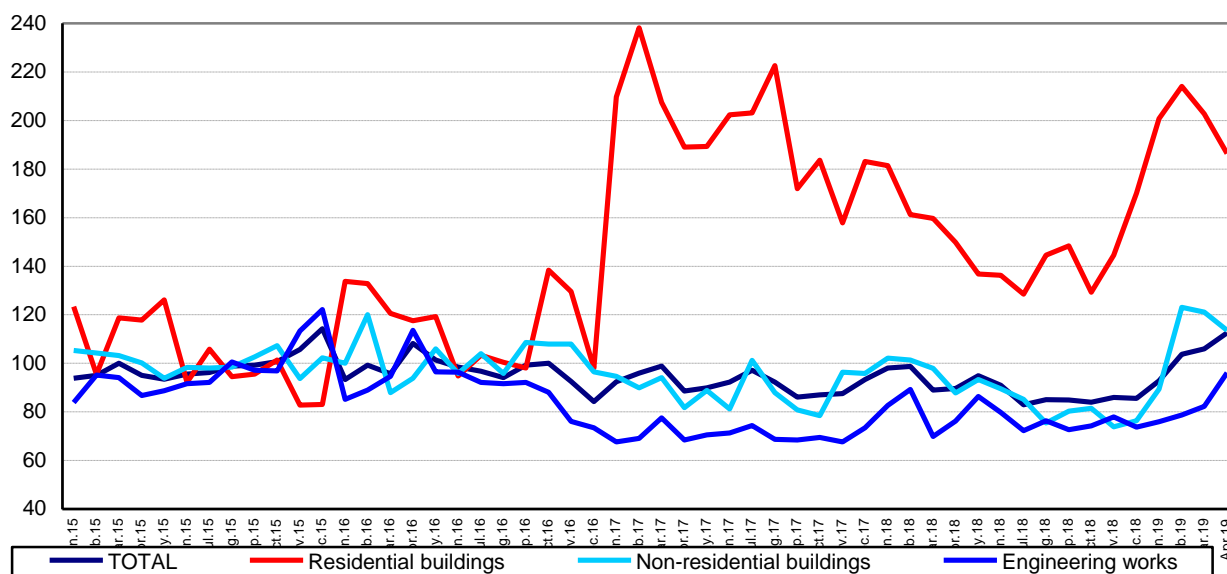
Monthly evolution of construction works, by structure elements, according to CANE Rev. 2
- January 2015-April 2019 -
(b adjusted series according to the number of working days and to seasonality)



[Graph data in xls format](#)

Monthly evolution of construction works, by construction objects, according to CANE Rev. 2
- January 2015-April 2019 -
 (adjusted series according to the number of working days and to seasonality)

2015=100



[Graph data in xls format](#)

April 2019 compared to March 2019

The volume of construction works increased overall, **as gross series**, by 9.0%, an increase reflected in all structure elements: in capital repair works (+26.8%), in maintenance and current repair works (+17.9%) and in new construction works (+5.1%).

By construction objects, **the gross series** shows a rise in the volume of engineering works (+31.2%). The volume of construction works dropped 8.1% in non-residential buildings and 2.7% in residential buildings.

The volume of construction works increased overall, **as adjusted series according to the number of working days and to seasonality**, by 6.2%, an increase reflected in capital repair works (+28.0%) and in new construction works (+2.9%). The volume of maintenance and current repair works fell by 1.6%.

By construction objects, **the adjusted series according to the number of working days and to seasonality** shows a rise in the volume of engineering works (+16.9%) and decreases in the volume of construction works for residential buildings (-8.1%) and for non-residential buildings (-6.2%).

April 2019 compared to April 2018

The volume of construction works increased overall, **as gross series**, by 33.4%. By structure elements, increases were reported for new construction works (+40.8%), for maintenance and current repair works (+20.4%) and for capital repair works (+11.4%).

By construction objects, **the gross series** shows rises in the volume of construction works as follows: for engineering works (+36.6%), for non-residential buildings (+32.9%) and for residential buildings (+27.5%).

The volume of construction works rose, **as adjusted series according to the number of working days and to seasonality**, by 25.5%. By structure elements, there were rises in new construction works (+34.2%), in maintenance and current repair works (+11.5%) and in capital repair works (+7.9%).

By construction objects, **the adjusted series according to the number of working days and to seasonality** shows increases in the volume of construction works for non-residential buildings (+29.4%), for engineering works (+26.1%) and for residential buildings (+24.4%).

The 1.I-30.IV.2019 period compared to the 1.I-30.IV.2018 period

The volume of construction works increased overall, **as gross series**, by 17.8%. By structure elements, increases were reported for new construction works (+25.6%), for capital repair works (+1.0%) and for maintenance and current repair works (+0.4%).

By construction objects, **the gross series** shows rises in the volume of construction works for residential buildings (+26.9%), for non-residential buildings (+20.2%) and for engineering works (+11.3%).

The volume of construction works rose overall, **as adjusted series according to the number of working days and to seasonality**, by 10.5%, a rise reflected in the volume of new construction works (+19.3%) and in the volume of capital repair works (+3.9%). The volume of maintenance and current repair works dropped 5.2%.

By construction objects, **the adjusted series according to the number of working days and to seasonality** shows increases in the volume of construction works for residential buildings (+23.3%), for non-residential buildings (+14.9%) and for engineering works (+4.7%).

Construction works indices

Construction works indices		APRIL 2019 in % compared to:		1.I-30.IV.2019/ 1.I-30.IV.2018 -%-
		MARCH 2019	APRIL 2018	
Constructions – total	G	109.0	133.4	117.8
	S	106.2	125.5	110.5
- by structure elements:				
New constructions	G	105.1	140.8	125.6
	S	102.9	134.2	119.3
Capital repairs	G	126.8	111.4	101.0
	S	128.0	107.9	103.9
Maintenance and current repairs	G	117.9	120.4	100.4
	S	98.4	111.5	94.8
- by construction objects:				
Residential buildings	G	97.3	127.5	126.9
	S	91.9	124.4	123.3
Non-residential buildings	G	91.9	132.9	120.2
	S	93.8	129.4	114.9
Engineering works	G	131.2	136.6	111.3
	S	116.9	126.1	104.7

G = gross series; S = adjusted series according to the number of working days and to seasonality [Table data in xls format](#)

Additional information:

The **construction volume indices** are determined by deflating the value data with the construction cost indices by structure element and by construction object. The construction volume indices are calculated for the overall construction branch (section F of CANE Rev. 2), by structure element (new construction works, capital repair works, maintenance and current repair works) and by construction object (residential buildings, non-residential buildings and engineering works).

The construction works indices overall are calculated as a weighted arithmetic mean of indices by structure element or of indices by construction object.

Beside the gross series of construction volume indices, **indices that are adjusted by number of working days and seasonality** are also calculated on a monthly basis, through the **regressive method**, using the **JDEMETRA+ version 2.0** software package (**the TRAMO/SEATS method**), a method recommended by the European regulations concerning short-term indicators (Council Regulation No 1165/1998).

For the correct interpretation of the indicators, please see the [Methodological Notes attached to the press release on the homepage](#).

For additional information, please see the TEMPO online database of the NIS (the data for April 2019 will be available on June 14, 2019) and the Monthly Statistical Bulletin (date of issue June 28, 2019).

For comparative data at EU level, please see the Eurostat press release issued on Wednesday, June 19, 2019 at the address <http://ec.europa.eu/eurostat/web/main>.

The next issue of the press release will be on Monday, July 15, 2019.

Press release archive: <http://www.insse.ro/cms/en/comunicate-de-presa-view>

Communication Directorate

E-mail: birou presa@insse.ro

Tel: +4021 3181869