

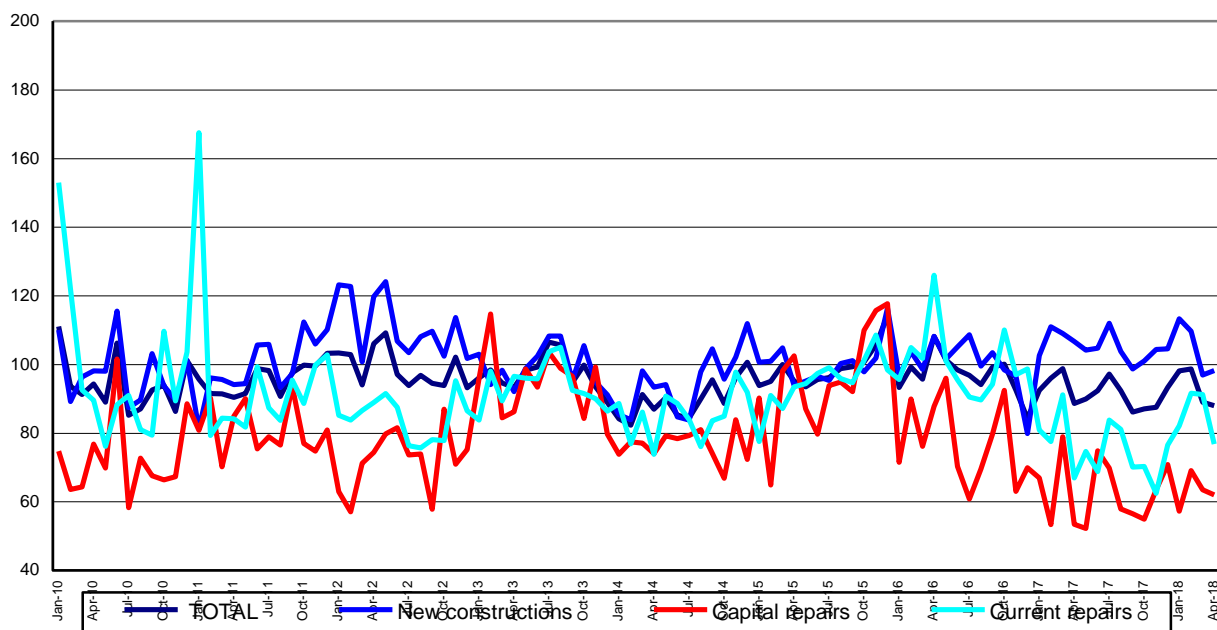
Domain: Construction

CONSTRUCTION WORKS IN APRIL 2018

- Compared to the previous month, in April 2018, the volume of construction works decreased, as gross series, by 3.1% and, as adjusted series according to the number of working days and to seasonality, by 1.1%.
- Compared to the corresponding month of the previous year, the volume of construction works fell both as gross series and as adjusted series according to the number of working days and to seasonality, by 4.1% and by 0.7%, respectively.
- Compared to the 1.I-30.IV.2017 period, in the 1.I-30.IV.2018 period, the volume of construction decreased both as gross series and as adjusted series according to the number of working days and to seasonality, by 2.7% and by 0.6%, respectively.

**Monthly evolution of construction works, by structure elements,
according to CANE Rev. 2
- January 2010-April 2018 -
(adjusted series according to the number of working days and to seasonality)**

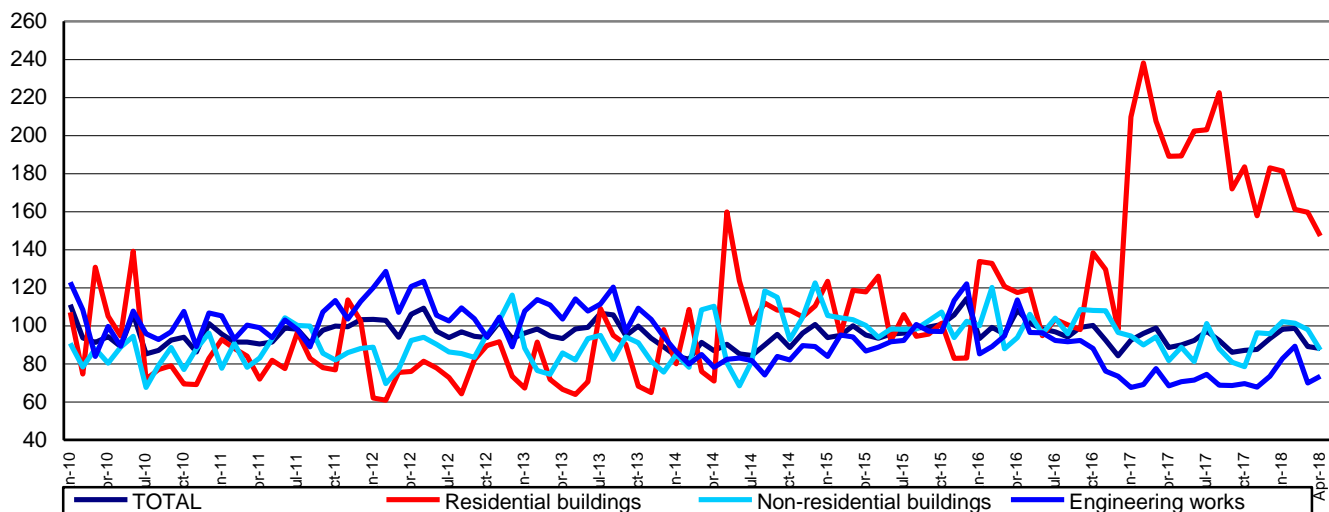
- 2015=100 -



[Graph data in xls format](#)

**Monthly evolution of construction works, by construction objects,
according to CANE Rev. 2
- January 2010-April 2018 -
(adjusted series according to the number of working days and to seasonality)**

- 2015=100 -



[Graph data in xls format](#)

April 2018 compared to March 2018

The volume of construction works decreased, as gross series, by 3.1%, a decrease reflected in capital repair works (-13.6%), in maintenance and current repair works (-2.5%) and in new construction works (-1.5%).

By construction objects, there were drops of 14.0% in non-residential buildings and 4.9% in residential buildings. The engineering works were up 6.6%.

The volume of construction works decreased, as adjusted series according to the number of working days and to seasonality, by 1.1%, a decrease reflected in maintenance and current repair works (-15.8%) and in capital repair works (-2.4%). There was a rise of 1.3% in new construction works.

By construction objects, the volume of construction works dropped in non-residential buildings (-10.8%) and in residential buildings (-7.8%). The engineering works were up 5.0%.

April 2018 compared to April 2017

The volume of construction works decreased overall, as gross series, by 4.1%, a decrease reflected in new construction works (-11.4%). There were rises of 17.1% in maintenance and current repair works and 12.7% in capital repair works.

By construction objects, the volume of construction works fell in residential buildings (-24.4%). The non-residential buildings rose by 4.7% and the engineering works were up 3.7%.

The volume of construction works decreased, as adjusted series according to the number of working days and to seasonality, by 0.7%. By structure elements, there was a drop of 8.0% in new construction works. There were rises of 16.1% in capital repair works and 14.8% in maintenance and current repair works.

By construction objects, the volume of construction works fell in residential buildings (-22.1%). The engineering works were up 7.3% and the non-residential buildings rose by 6.8%.

The 1.I.-30.IV.2018 period compared to the 1.I.-30.IV.2017 period

The volume of construction works decreased overall, as gross series, by 2.7%. By structure elements, there were drops in new construction works (-6.1%) and in capital repair works (-3.5%). The maintenance and current repair works were up 10.2%.

By construction objects, there was a fall of 24.7% in residential buildings. There were rises in non-residential buildings (+6.9%) and in engineering works (+6.8%).

The volume of construction works decreased overall, as adjusted series according to the number of working days and to seasonality, by 0.6%. By structure elements, there were drops in new construction works (-2.6%) and in capital repair works (-0.3%). The maintenance and current repair works were up 8.0%.

By construction objects, the volume of construction works fell in residential buildings (-23.1%). There were rises of 11.6% in engineering works and 7.8% in non-residential buildings.

Construction works indices

- percentages -

		April 2018 compared to:		The 1.I-30.IV.2018 period/ the 1.I-30.IV.2017 period
		March 2018	April 2017	
Constructions - total	G	96.9	95.9	97.3
	S	98.9	99.3	99.4
- by structure elements:				
New constructions	G	98.5	88.6	93.9
	S	101.3	92.0	97.4
Capital repairs	G	86.4	112.7	96.5
	S	97.6	116.1	99.7
Maintenance and current repairs	G	97.5	117.1	110.2
	S	84.2	114.8	108.0
- by construction objects:				
Residential buildings	G	95.1	75.6	75.3
	S	92.2	77.9	76.9
Non-residential buildings	G	86.0	104.7	106.9
	S	89.2	106.8	107.8
Engineering works	G	106.6	103.7	106.8
	S	105.0	107.3	111.6

G = gross series; S = adjusted series according to the number of working days and to seasonality

[Table data in xls format](#)

Additional information:

IMPORTANT! In order to show the changes in the structure of the economy, starting with the publication of the data for the reference month **January 2018**, the base year used in the calculation of construction works indices was changed **from 2010 to 2015**. The change in the base year also involves the updating of the weighting system; the changes in the weighting system reflect the structural changes that occurred in the activities of the national economy. These changes led to the adequate recalculation and revision of the previously published data series. These changes will appear in press releases, statistical publications produced by the NIS and in the TEMPO online database.

The **construction volume indices** are determined by deflating the value data with the construction cost indices by structure element and by construction object. The construction volume indices are calculated for the overall construction branch (section F of CANE Rev. 2), by structure element (new construction works, capital repair works, maintenance and current repair works) and by construction object (residential buildings, non-residential buildings and engineering works).

The construction works indices overall are calculated as a weighted arithmetic mean of indices by structure element or of indices by construction object.

Beside the gross series of construction volume indices, **indices that are adjusted by number of working days and seasonality** are also calculated on a monthly basis, through the **regressive method**, a method recommended by the European regulations concerning short-term indicators (Council Regulation No 1165/1998).

For the correct interpretation of the indicators, please see the [Methodological Notes attached to the press release on the homepage](#).

For additional information, please see the statistical publication *Monthly Statistical Bulletin* (date of issue June 25, 2018) and the TEMPO online database of the NIS (the data for April 2018 will be available on June 14, 2018).

For comparable data with the other Member States of the European Union, please see the Eurostat press release issued on Tuesday, June 19, 2018 at the address <http://ec.europa.eu/eurostat/web/main>.

The next issue of the press release will be on Friday, July 13, 2018.

Press release archive: <http://www.insse.ro/cms/en/comunicate-de-presa-view>

Communication Directorate

E-mail: birou presa@insse.ro

Tel: +4021 3181869