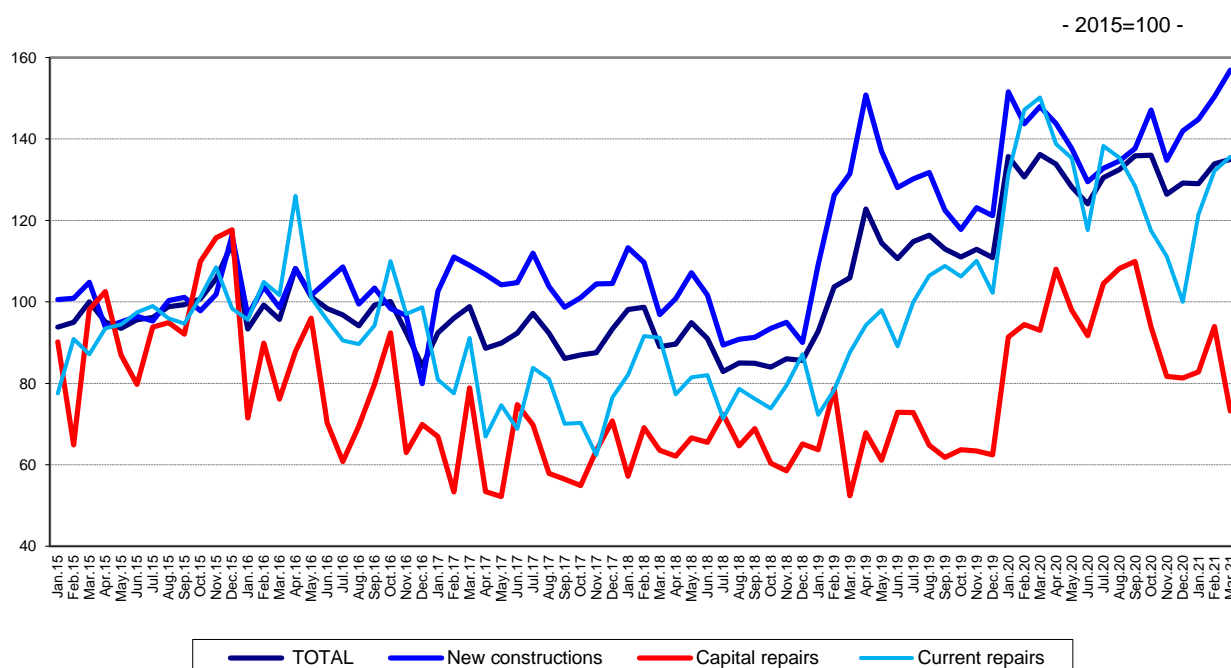


Domain: Construction

CONSTRUCTION WORKS IN MARCH 2021

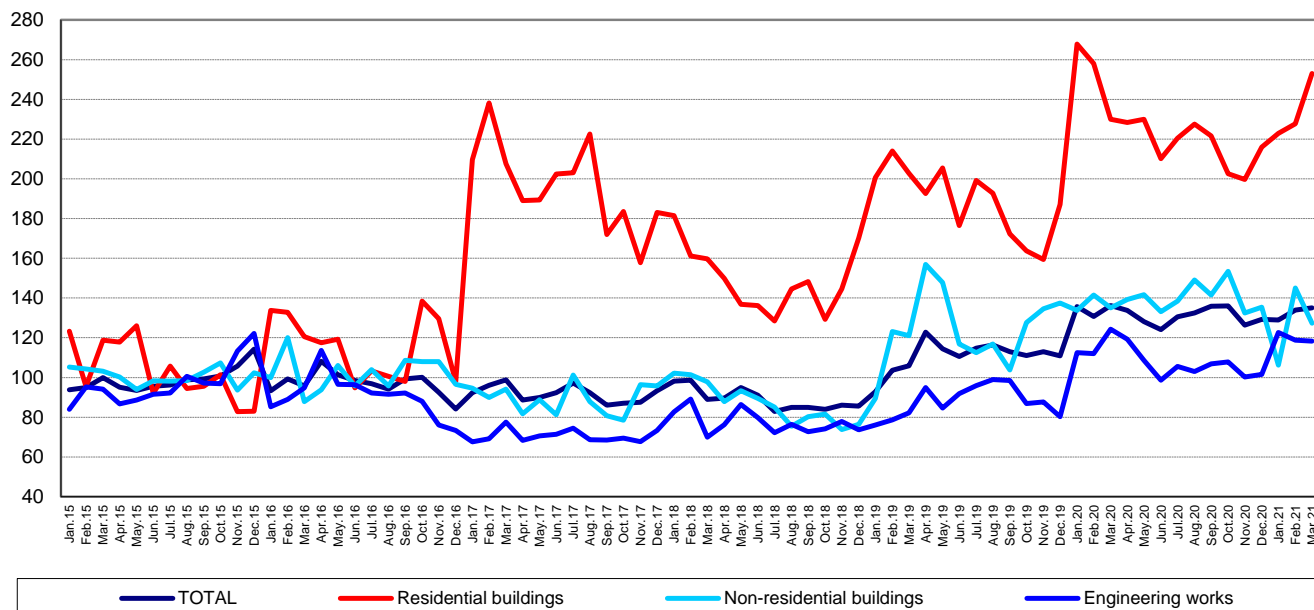
- In March 2021, the volume of construction works increased, as gross series, by 36.6% compared to the previous month and was up 0.8% as adjusted series according to the number of working days and to seasonality.
- Compared to the corresponding month of the previous year, the volume of construction works rose, as gross series, by 2.2% and dropped 0.9% as adjusted series according to the number of working days and to seasonality.
- Compared to the 1.I-31.III.2020 period, in the 1.I-31.III.2021 period, the volume of construction works increased, as gross series, by 1.2% and fell, as adjusted series according to the number of working days and to seasonality, by 1.2%.

Monthly evolution of construction works, by structure elements, according to NACE Rev. 2
- January 2015-March 2021 -
(adjusted series according to the number of working days and to seasonality)


[The graph data in xls format](#)

**Monthly evolution of construction works, by construction objects, according to NACE Rev. 2
- January 2015-March 2021 -
(adjusted series according to the number of working days and to seasonality)**

- 2015=100 -



[The graph data in xls format](#)

March 2021 compared to February 2021

The volume of construction works increased, as gross series, by 36.6%, an increase reflected in new construction works (+40.7%), maintenance and current repair works (+29.3%) and capital repair works (+22.0%).

By construction objects, the following rises were reported: for engineering works (+49.6%), for residential buildings (+31.9%) and for non-residential buildings (+21.8%).

The volume of construction works increased, as adjusted series according to the number of working days and to seasonality, by 0.8%, an increase reflected in new construction works (+4.4%) and maintenance and current repair works (+2.5%). The capital repair works were down 22.1%.

By construction objects, the volume of construction works rose for residential buildings (+11.1%) The non-residential buildings fell by 12.2%, and the engineering works dropped 0.4%.

March 2021 compared to March 2020

The volume of construction works rose overall, as gross series, by 2.2%. By structure elements, a rise was reported for new construction works (+11.0%). The capital repair works were down 21.7%, and the maintenance and current repair works fell by 12.0%.

By construction objects, the volume of construction works increased for residential buildings (+14.1%) and for engineering works (+1.1%). The non-residential buildings were down 4.9%.

The volume of construction works fell overall, as adjusted series according to the number of working days and to seasonality, by 0.9%. By structure elements, drops were reported for capital repair works (-21.3%) and for maintenance and current repair works (-9.7%). The new construction works were up 6.0%.

By construction objects, the volume of construction works decreased for non-residential buildings (-5.8%) and for engineering works (-4.9%). The residential buildings were up 10.0%.

The 1.I-31.III.2021 period compared to the 1.I-31.III.2020 period

The volume of construction works increased overall, as gross series, by 1.2%. By structure elements, a rise was reported for new construction works (+6.2%). Drops were recorded for capital repair works (-12.3%) and for maintenance and current repair works (-7.8%).

By construction objects, rises were reported for engineering works (+5.6%) and for residential buildings (+2.6%). The non-residential buildings were down 6.6%.

The volume of construction works decreased overall, as adjusted series according to the number of working days and to seasonality, by 1.2%, a decrease reflected in capital repair works (-10.3%) and maintenance and current repair works (-9.2%). The new construction works were up 2.0%.

By construction objects, drops were reported for non-residential buildings (-7.8%) and for residential buildings (-6.9%). The engineering works were up 3.1%.

Construction works indices

- percentages -

| | | MARCH 2021 compared to: | | 1.I-31.III.2021/ 1.I-31.III.2020 |
|---------------------------------|----------|-------------------------|--------------|-------------------------------------|
| | | FEBRUARY 2021 | MARCH 2020 | |
| Constructions – total | G | 136.6 | 102.2 | 101.2 |
| | S | 100.8 | 99.1 | 98.8 |
| - by structure elements: | | | | |
| New constructions | G | 140.7 | 111.0 | 106.2 |
| | S | 104.4 | 106.0 | 102.0 |
| Capital repairs | G | 122.0 | 78.3 | 87.7 |
| | S | 77.9 | 78.7 | 89.7 |
| Maintenance and current repairs | G | 129.3 | 88.0 | 92.2 |
| | S | 102.5 | 90.3 | 90.8 |
| - by construction objects: | | | | |
| Residential buildings | G | 131.9 | 114.1 | 102.6 |
| | S | 111.1 | 110.0 | 93.1 |
| Non-residential buildings | G | 121.8 | 95.1 | 93.4 |
| | S | 87.8 | 94.2 | 92.2 |
| Engineering works | G | 149.6 | 101.1 | 105.6 |
| | S | 99.6 | 95.1 | 103.1 |

G = gross series; S = adjusted series according to the number of working days and to seasonality

[The table data in xls format](#)

Additional information:

- The **construction volume indices** are determined by deflating the value data with the construction cost indices by structure element and by construction object. The construction volume indices are calculated for the overall construction branch (section F of NACE Rev. 2), by structure element (new construction works, capital repair works, maintenance and current repair works) and by construction object (residential buildings, non-residential buildings and engineering works).
- The construction works indices overall are calculated as a weighted arithmetic mean of indices by structure element or of indices by construction object.
- Beside the gross series of construction volume indices, **indices that are adjusted by number of working days and seasonality** are also calculated on a monthly basis, through the **regressive method**, using the **JDEMETRA+ version 2.2.0** software package (**the TRAMO/SEATS method**), a method recommended by the European regulations concerning short-term indicators (Council Regulation No 1165/1998).

For the correct interpretation of the indicators, please see the [Methodological Notes attached to the press release on the homepage](#).

For additional information, please see the TEMPO online database of the NIS (the data for March 2021 will be available on May 14, 2021) and the Monthly Statistical Bulletin (date of issue May 27, 2021).

For comparative data at EU level, please see the Eurostat press release to be issued on Monday, May 19, 2021 at the address <http://ec.europa.eu/eurostat/web/main>.

The next issue of the press release will be on Wednesday, June 16, 2021.

Press release archive: <http://www.insse.ro/cms/en/comunicate-de-presa-view>

Communication Directorate

E-mail: birou presa@insse.ro

Tel: +4021 3181869