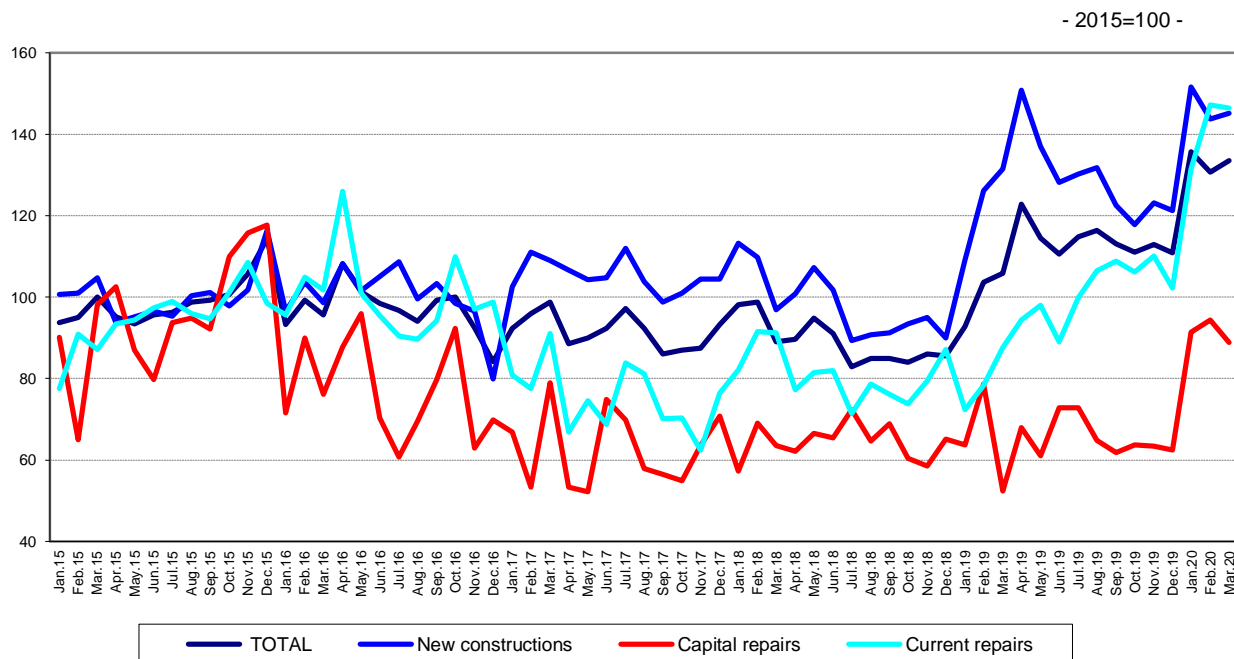


Domain: Construction

## CONSTRUCTION WORKS IN MARCH 2020

- In March 2020, the volume of construction works increased, as gross series, by 37.0% compared to the previous month and was up 2.1% as adjusted series according to the number of working days and to seasonality.
- Compared to the corresponding month of the previous year, the volume of construction works rose both as gross series and as adjusted series according to the number of working days and to seasonality, by 29.6% and by 26.1%, respectively.
- Compared to the first quarter of 2019, in the first quarter of 2020, the volume of construction works increased, as gross series, by 32.6% and rose, as adjusted series according to the number of working days and to seasonality, by 32.3%.

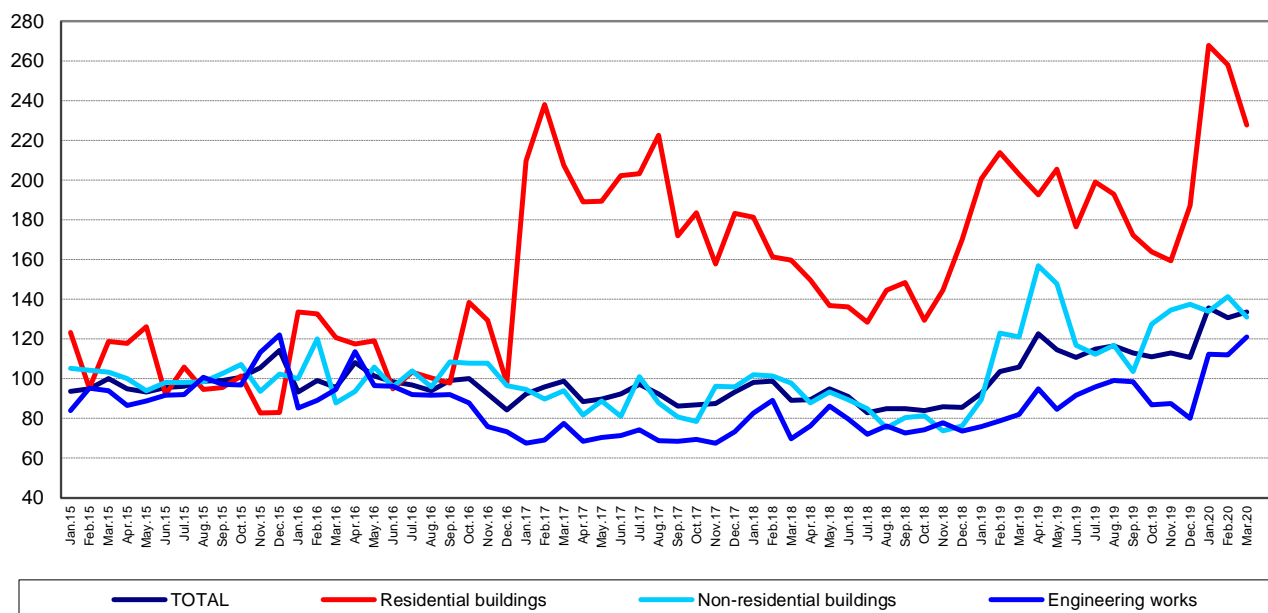
**Monthly evolution of construction works, by structure elements, according to NACE Rev. 2**  
**- January 2015-March 2020 -**  
**(adjusted series according to the number of working days and to seasonality)**



[The graph data in xls format](#)

**Monthly evolution of construction works, by construction objects, according to NACE Rev. 2  
- January 2015-March 2020 -  
(adjusted series according to the number of working days and to seasonality)**

- 2015=100 -



[The graph data in xls format](#)

### March 2020 compared to February 2020

The volume of construction works increased, as gross series, by 37.0%, an increase reflected in capital repair works (+51.8%), in maintenance and current repair works (+40.9%) and in new construction works (+33.6%). By construction objects, rises were reported as follows: engineering works (+53.0%), residential buildings (+28.4%) and non-residential buildings (+20.0%).

The volume of construction works increased overall, as adjusted series according to the number of working days and to seasonality, by 2.1%, an increase reflected in new construction works (+1.0%). The capital repair works were down 5.9%, and the maintenance and current repair works dropped 0.6%.

By construction objects, the volume of construction works rose for engineering works (+8.1%). Falls were reported for residential buildings (-11.8%) and for non-residential buildings (-7.4%).

### March 2020 compared to March 2019

The volume of construction works rose overall, as gross series, by 29.6%. By structure elements, rises were reported for capital repair works (+77.9%), for maintenance and current repair works (+71.1%) and for new construction works (+14.8%).

By construction objects, the volume of construction works increased as follows: engineering works (+56.9%), residential buildings (+17.6%) and non-residential buildings (+7.1%).

The volume of construction works increased, as adjusted series according to the number of working days and to seasonality, by 26.1%. By structure elements, increases were reported for capital repair works (+69.8%), for maintenance and current repair works (+67.2%) and for new construction works (+10.4%).

By construction objects, the volume of construction works rose for engineering works (+47.2%), residential buildings (+12.3%) and non-residential buildings (+8.2%).

## The first quarter of 2020 compared to the first quarter of 2019

The volume of construction works increased overall, as gross series, by 32.6%. By structure elements, rises were reported for maintenance and current repair works (+75.7%), for capital repair works (+51.9%) and for new construction works (+20.3%).

By construction objects, the volume of construction works increased for engineering works (+53.2%), residential buildings (+21.8%) and non-residential buildings (+17.6%).

The volume of construction works increased overall, as adjusted series according to the number of working days and to seasonality, by 32.3%, an increase reflected in maintenance and current repair works (+78.3%), in capital repair works (+41.1%) and in new construction works (+20.1%).

By construction objects, the volume of construction works rose for engineering works (+45.9%), residential buildings (+22.0%) and non-residential buildings (+21.8%).

### Construction works indices

- percentages -

		MARCH 2020 compared to:		Quarter I 2020/ Quarter I 2019
		FEBRUARY 2020	MARCH 2019	
<b>Constructions – total</b>	<b>G</b>	<b>137.0</b>	<b>129.6</b>	<b>132.6</b>
	<b>S</b>	<b>102.1</b>	<b>126.1</b>	<b>132.3</b>
- by structure elements:				
New constructions	G	133.6	114.8	120.3
	S	101.0	110.4	120.1
Capital repairs	G	151.8	177.9	151.9
	S	94.1	169.8	141.1
Maintenance and current repairs	G	140.9	171.1	175.7
	S	99.4	167.2	178.3
- by construction objects:				
Residential buildings	G	120.0	117.6	121.8
	S	88.2	112.3	122.0
Non-residential buildings	G	128.4	107.1	117.6
	S	92.6	108.2	121.8
Engineering works	G	153.0	156.9	153.2
	S	108.1	147.2	145.9

G = gross series; S = adjusted series according to the number of working days and to seasonality

[The table data in xls format](#)

### IMPORTANT!

- ✓ *The information in this press release (March 2020) captures the impact of the COVID-19 crisis and of the measures taken by the authorities as a result of the state of emergency having been declared on Romanian territory as of 16 March 2020.*
- ✓ *The National Institute of Statistics understands the difficulties its respondents are confronted with during this period and is aware of the fact that the answers to statistical surveys may not be a priority at this time.*
- ✓ *Nevertheless, by collecting statistical information, we will be able to monitor the effects of COVID-19 on our economy and society and inform all our users about these effects.*
- ✓ *We appreciate the constant support of our respondents in the statistical surveys conducted by the National Institute of Statistics and understand the difficulties all statistical data providers are facing.*

#### Additional information:

- The **construction volume indices** are determined by deflating the value data with the construction cost indices by structure element and by construction object. The construction volume indices are calculated for the overall construction branch (section F of NACE Rev. 2), by structure element (new construction works, capital repair works, maintenance and current repair works) and by construction object (residential buildings, non-residential buildings and engineering works).
- The construction works indices overall are calculated as a weighted arithmetic mean of indices by structure element or of indices by construction object.
- Beside the gross series of construction volume indices, **indices that are adjusted by number of working days and seasonality** are also calculated on a monthly basis, through the **regressive method**, using the **JDEMETRA+ version 2.0** software package (**the TRAMO/SEATS method**), a method recommended by the European regulations concerning short-term indicators (Council Regulation No 1165/1998).
- The response rate to the monthly statistical survey on short-term indicators in construction (CONTS), the VAL chapter – The value of construction works for March 2020, was 85.0% compared to 89.8% in March 2019.

For the correct interpretation of the indicators, please see the [Methodological Notes attached to the press release on the homepage](#).

For additional information, please see the TEMPO online database of the NIS (the data for March 2020 will be available on May 15, 2020) and the Monthly Statistical Bulletin (date of issue May 27, 2020).

For comparative data at EU level, please see the Eurostat press release to be issued on Tuesday, May 19, 2020 at the address <https://ec.europa.eu/eurostat/web/main>.

The next issue of the press release will be on Tuesday, June 16, 2020.

Press release archive: <https://insse.ro/cms/en/comunicate-de-presa-view>

#### Communication Directorate

E-mail: [birou presa@insse.ro](mailto:birou presa@insse.ro)

Tel: +4021 3181869