

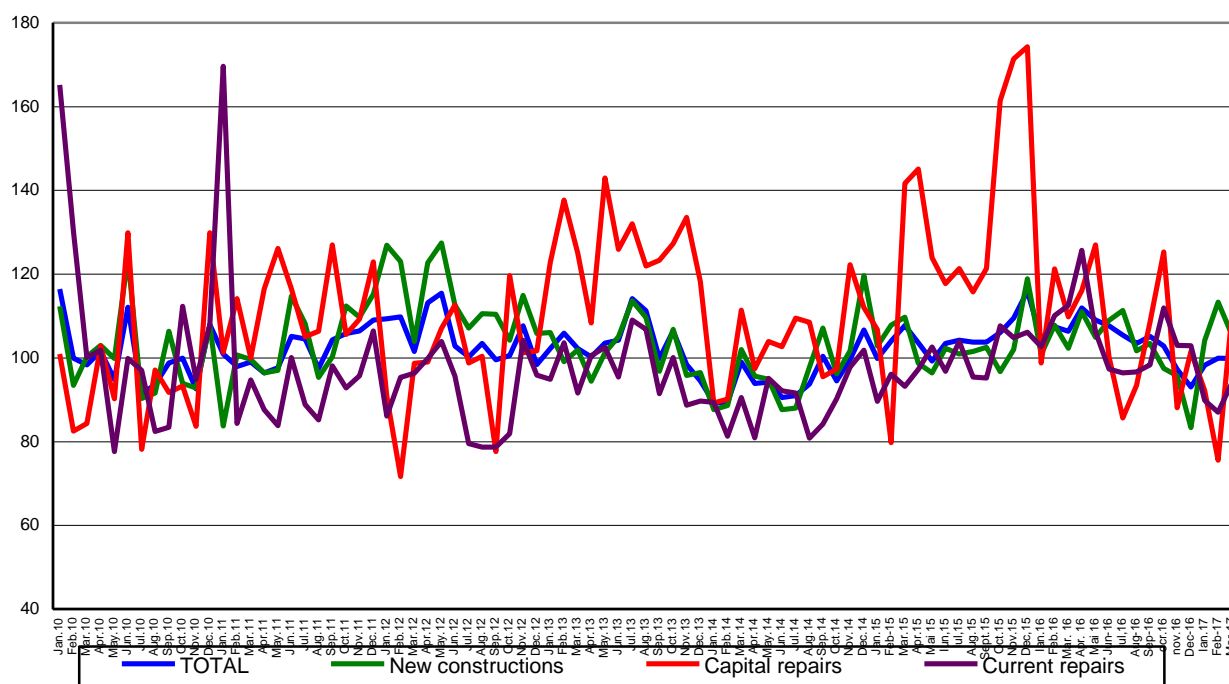
Domain: Construction

IN MARCH 2017, THE CONSTRUCTION WORKS DECREASED BY 1.0% COMPARED TO MARCH 2016

- Compared to the previous month, in March 2017, the volume of construction works increased, as gross series, by 37.9% and decreased by 0.1% as adjusted series according to the number of working days.
- Compared to the corresponding month of the previous year, the volume of construction works decreased, both as gross series and as adjusted series according to the number of working days and to seasonality by 1.0% and by 6.1%, respectively.
- Compared to Quarter I 2016, in Quarter I 2017, the volume of construction works decreased both as gross series and as adjusted series according to the number of working days and to seasonality by 1.5% and by 6.4%, respectively.

**Monthly evolution of construction works, by structure elements,
according to CANE Rev. 2
- January 2010 – March 2017-
(adjusted series according to the number of working days and to seasonality)**

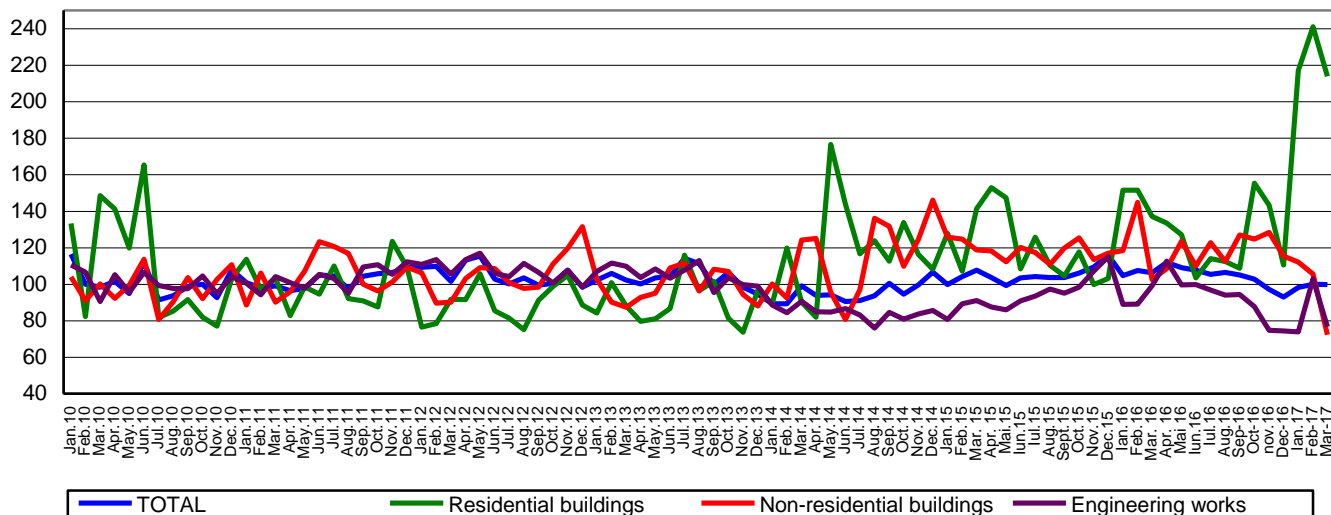
- 2010=100 -



[Graph data in xls format](#)

**Monthly evolution of construction works, by construction objects,
according to CANE Rev. 2
- January 2010 – March 2017 -
(adjusted series according to the number of working days and to seasonality)**

- 2010=100 -



[Graph data in xls format](#)

March 2017 compared to February 2017

The volume of construction works increased as gross series by 37.9%, increase highlighted capital repair works by 191.7%, in maintenance and current repairs works by 36.5% and in new construction works by 25.1%.
By construction objects, there were rises in engineering works (77.0%), in non-residential buildings (35.2%) and in residential buildings (3.0%).

The volume of construction works decreased per total, as adjusted series by the number of working days and by seasonality, by 0.1%, decrease highlighted in new construction works by 6.9%. The capital repairs works and the maintenance and current repairs works increased by 45.9% and by 8.1%, respectively.
By construction objects, the volume of construction works decreased in residential buildings and in non-residential buildings by 11.4% and by 2.5%, respectively. There were rises in engineering works of 6.0%.

March 2017 compared to March 2016

The volume of construction works decreased, as gross series, by 1.0%. By structure elements, there were drops in maintenance and current repairs works of 16.7%. The capital repair works and the new construction works increased by 6.6% and by 3.2%, respectively.

By construction objects, the volume of construction works decreased in engineering works by 20.3% and in non-residential buildings by 1.1%. There were rises in residential buildings of 64.1%.

The volume of construction works decreased, as adjusted series according to the number of working days and to seasonality, by 6.1%. By structure elements, there were drops in maintenance and current repairs works of 16.4%. There were rises in new construction works and in capital repair works of 3.0% and of 0.4%, respectively.

By construction objects, the volume of construction works decreased and in engineering works by 22.7%. There were rises in residential buildings and in non-residential buildings of 56.0% and of 0.4%, respectively.

Quarter I 2017 compared to Quarter I 2016

The volume of construction works decreased per total, as gross series, by 1.5%. By structure elements, there were drops in maintenance and current repairs works of 15.3% and in capital repairs works of 10.2%. The new construction works increased by 5.0%.

By construction objects, there were drops in engineering works and in non-residential buildings of 22.5% and of 10.6%, respectively. The residential buildings increased by 77.2%.

The volume of construction works decreased per total, as adjusted series according to the number of working days and to seasonality, by 6.4%. By structure elements, there were drops in maintenance and current repairs works and in capital repairs works of 16.8% and of 15.7%, respectively. The new construction works increased by 3.8%. By construction objects, the volume of construction works decreased in engineering works by 19.6 and in non-residential buildings by 12.4%. The volume of construction works increased in residential buildings by 52.8%.

Construction works indices

- percentage -

		March 2017 compared to:		Quarter I 2017/ Quarter I 2016
		February 2017	March 2016	
Constructions - total	B	137.9	99.0	98.5
	S	99.9	93.9	93.6
- by structure elements:				
New constructions	B	125.1	103.2	105.0
	S	93.1	103.0	103.8
Capital repairs	B	291.7	106.6	89.8
	S	145.9	100.4	84.3
Maintenance and current repairs	B	136.5	83.3	84.7
	S	108.1	83.6	83.2
- by construction objects:				
Residential buildings	B	103.0	164.1	177.2
	S	88.6	156.0	152.8
Non-residential buildings	B	135.2	98.9	89.4
	S	97.5	100.4	87.6
Engineering works	B	177.0	79.7	77.5
	S	106.0	77.3	80.4

B= gross series; S= adjusted series according to the number of working days and to seasonality;

[Graphic data in xls format](#)

Additional Information:

For the correct interpretation of results, kindly see the [Methodological Note attached to the press release on the homepage](#).

For additional information, kindly see the statistical publication Monthly Statistical Bulletin (date of issue May 26, 2017) and the on line TEMPO database of INS (data for March 2017 will be available on May 12, 2017).

For comparable data with the other Member States of the European Union, kindly see the Eurostat press release, issued on Wednesday, May 17, 2017 at the address: <http://ec.europa.eu/eurostat/web/main>

The next issue of the press release will be on Friday, June 16, 2017.

The archive of the press releases: <http://www.insse.ro/cms/en/comunicate-de-presa-view>

The Directorate of Communication

e-mail: birou presa@insse.ro

Tel: +4021 3181869