

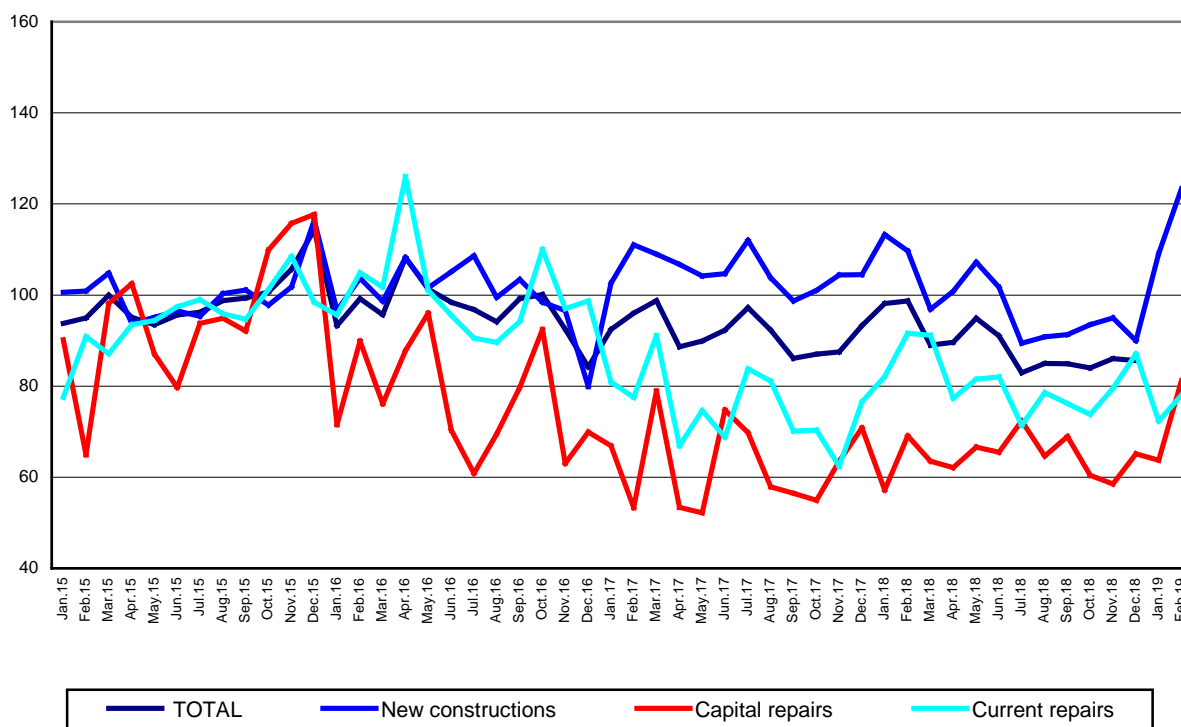
Domain: Construction

## CONSTRUCTION WORKS IN FEBRUARY 2019

- Compared to the previous month, in February 2019, the volume of construction works increased, as gross series, by 42.7% and rose, as adjusted series according to the number of working days and to seasonality, by 9.8%.
- Compared to the corresponding month of the previous year, the volume of construction works rose both as gross series and as adjusted series according to the number of working days and to seasonality, by 10.6% and by 3.2%, respectively.
- Compared to the 1.I-28.II.2018 period, in the 1.I-28.II.2019 period, the volume of construction works increased, as gross series, by 4.7% and fell, as adjusted series according to the number of working days and to seasonality, by 1.1%.

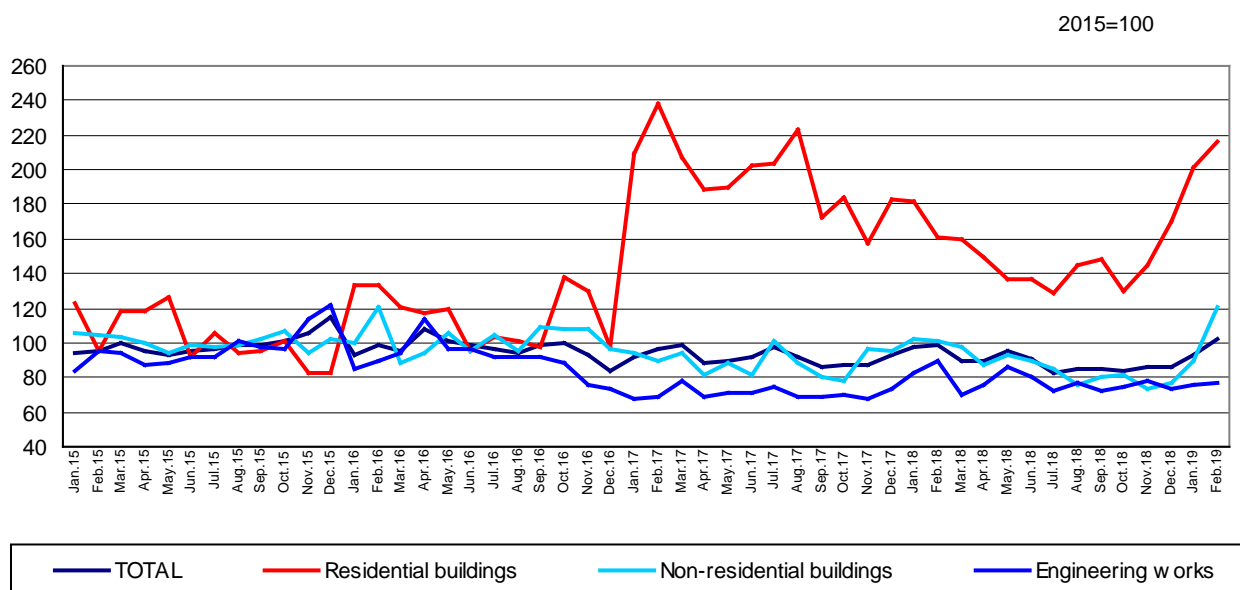
**Monthly evolution of construction works, by structure elements,  
according to CANE Rev. 2  
- January 2015-February 2019 -**  
(adjusted series according to the number of working days and to seasonality)

2015=100



[Graph data in xls format](#)

**Monthly evolution of construction works, by construction objects,  
according to CANE Rev. 2  
- January 2015-February 2019 -  
(adjusted series according to the number of working days and to seasonality)**



[Graph data in xls format](#)

### February 2019 compared to January 2019

The volume of construction works increased, as gross series, by 42.7%, an increase reflected in capital repair works (+53.0%), in new construction works (+43.8%) and in maintenance and current repair works (+33.5%).

By construction objects, there were rises in non-residential buildings (+66.4%), in residential buildings (+41.4%) and in engineering works (+26.5%).

The volume of construction works increased overall, as adjusted series according to the number of working days and to seasonality, by 9.8%, an increase reflected in capital repair works (+27.5%), in new construction works (+13.0%) and in maintenance and current repair works (+7.9%).

By construction objects, the volume of construction works rose by 35.2% in non-residential buildings, by 7.8% in residential buildings and by 1.8% in engineering works.

### February 2019 compared to February 2018

The volume of construction works increased overall, as gross series, by 10.6%. By structure elements, increases were reported for capital repair works (+24.4%) and for new construction works (+16.7%). The maintenance and current repair works were down 14.2%.

By construction objects, the volume of construction works rose by 38.5% in residential buildings and by 23.6% in non-residential buildings. The engineering works dropped 12.3%.

The volume of construction works rose, as adjusted series according to the number of working days and to seasonality, by 3.2%. By structure elements, there were rises in capital repair works (+17.5%) and in new construction works (+12.4%). A 14.8% decrease was reported for maintenance and current repair works.

By construction objects, the volume of construction works rose in residential buildings (+34.2%) and in non-residential buildings (+19.3%). The engineering works were down 13.2%.

#### The 1.I-28.II.2019 period compared to the 1.I-28.II.2018 period

The volume of construction works increased overall, as gross series, by 4.7%. By structure elements, increases were reported for capital repair works (+18.7%) and for new construction works (+8.6%). The maintenance and current repair works dropped 14.0%.

By construction objects, there were rises in residential buildings (+26.8%) and in non-residential buildings (+7.4%). The engineering works were down 9.4%.

The volume of construction works fell overall, as adjusted series according to the number of working days and to seasonality, by 1.1%, a fall reflected in maintenance and current repair works (-13.5%). The capital repair works rose by 14.7%, and the new construction works were up 4.2%.

By construction objects, the volume of construction works dropped in engineering works (-10.8%). Rises were reported for residential buildings (+21.8%) and for non-residential buildings (+3.4%).

#### Construction works indices

- percentages -

		FEBRUARY 2019 compared to:		1.I-28.II.2019/ 1.I-28.II.2018
		JANUARY 2019	FEBRUARY 2018	
Constructions – total	G	142.7	110.6	104.7
	S	109.8	103.2	98.9
- by structure elements:				
New constructions	G	143.8	116.7	108.6
	S	113.0	112.4	104.2
Capital repairs	G	153.0	124.4	118.7
	S	127.5	117.5	114.7
Maintenance and current repairs	G	133.5	85.8	86.0
	S	107.9	85.2	86.5
- by construction objects:				
Residential buildings	G	141.4	138.5	126.8
	S	107.8	134.2	121.8
Non-residential buildings	G	166.4	123.6	107.4
	S	135.2	119.3	103.4
Engineering works	G	126.5	87.7	90.6
	S	101.8	86.8	89.2

G = gross series; S = adjusted series according to the number of working days and to seasonality

[Table data in xls format](#)

#### Additional information:

The **construction volume indices** are determined by deflating the value data with the construction cost indices by structure element and by construction object. The construction volume indices are calculated for the overall construction branch (section F of CANE Rev. 2), by structure element (new construction works, capital repair works, maintenance and current repair works) and by construction object (residential buildings, non-residential buildings and engineering works).

The construction works indices overall are calculated as a weighted arithmetic mean of indices by structure element or of indices by construction object.

Beside the gross series of construction volume indices, **indices that are adjusted by number of working days and seasonality** are also calculated on a monthly basis, through the **regressive method**, a method recommended by the European regulations concerning short-term indicators (Council Regulation No 1165/1998).

For the correct interpretation of the indicators, please see the [Methodological Notes attached to the press release on the homepage](#).

For additional information, please see the TEMPO online database of the NIS (the data for February 2019 will be available on April 15, 2019) and the Monthly Statistical Bulletin (date of issue April 25, 2019).

For comparable data with the other Member States of the European Union, please see the Eurostat press release issued on Tuesday, April 16, 2019 at the address <http://ec.europa.eu/eurostat/web/main>.

The next issue of the press release will be on Wednesday, May 15, 2019.

Press release archive: <http://www.insse.ro/cms/en/comunicate-de-presa-view>

#### Communication Directorate

E-mail: [biroupresa@insse.ro](mailto:biroupresa@insse.ro)

Tel: +4021 3181869